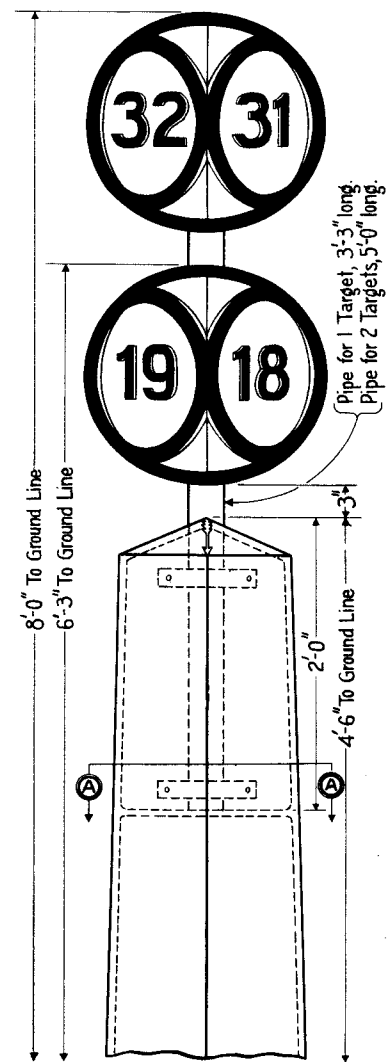
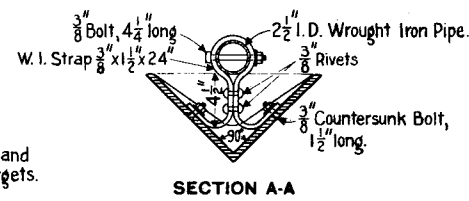
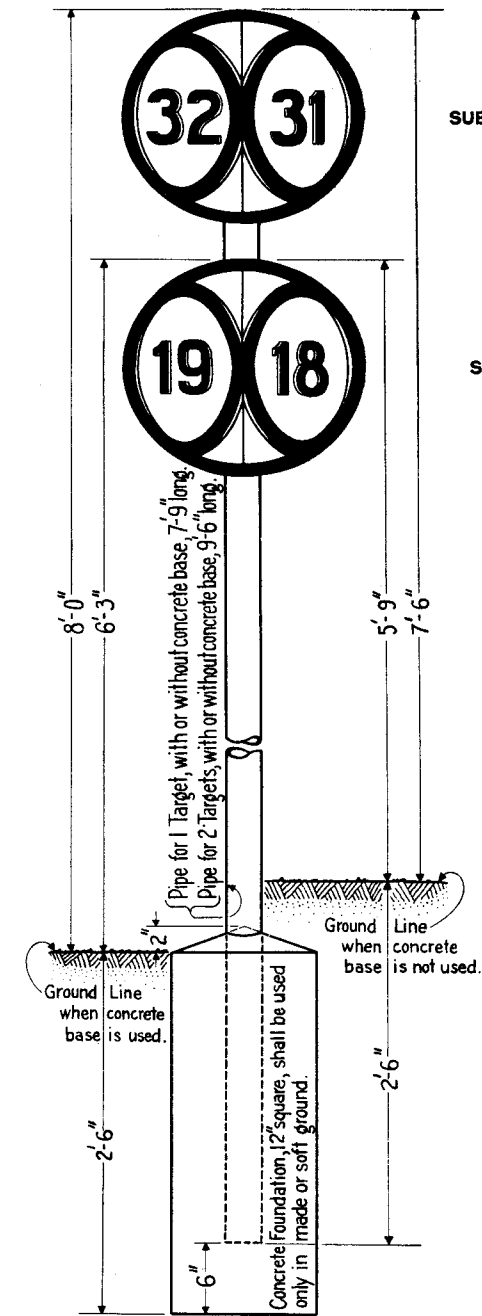


PLAN OF TARGET
GENERAL DIMENSION VIEWS



METHOD OF ATTACHING
SIGN TO MILE POST



FRONT ELEVATION OF SIGN

SUB-DIVISION TARGET

SECTION TARGET

RIGHT ANGLE ELEVATION OF TARGETS

NOTE:-

Regulation must be accompanied by a sketch showing the marking and position of target on the post; also specify which one of the designated lengths of pipe is required.


Targets shall be made of Cast Iron with border and figures raised 1/8" with slight draught, figures shall be of the proportions as shown on Standard Plan of Letters and Figures for Signs and Notices.

Face of border and figures shall be painted black on white background; back of targets and pipe painted black.

Signs shall be located on the right hand side of railroad going north and west with nearest point of the target set 12" beyond the ditch line in Cuts, except in the case of signs attached to Mile Post, not less than 8' - 0" from gauge of nearest rail on Fills or 6' - 0" from gauge of nearest rail on Bridges.

78455-A

PENNSYLVANIA SYSTEM

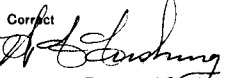


STANDARD

SECTION AND SUB-DIVISION SIGNS


OFFICE OF CHIEF ENGINEER, PHILA., PA., DECEMBER, 1921

Correct



Engineer of Standards

Approved



Chief Engineer