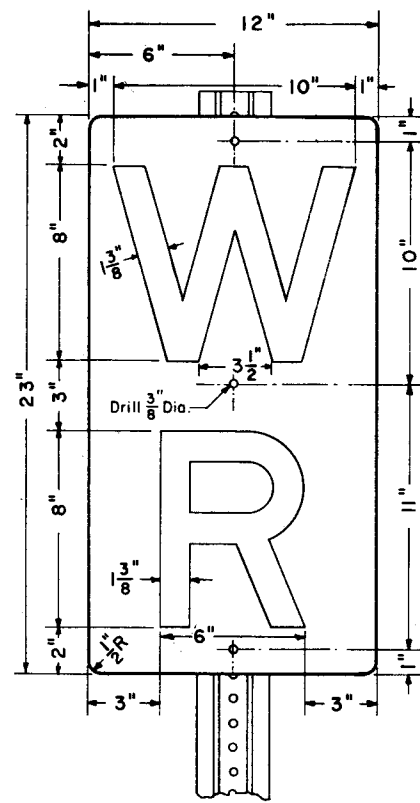
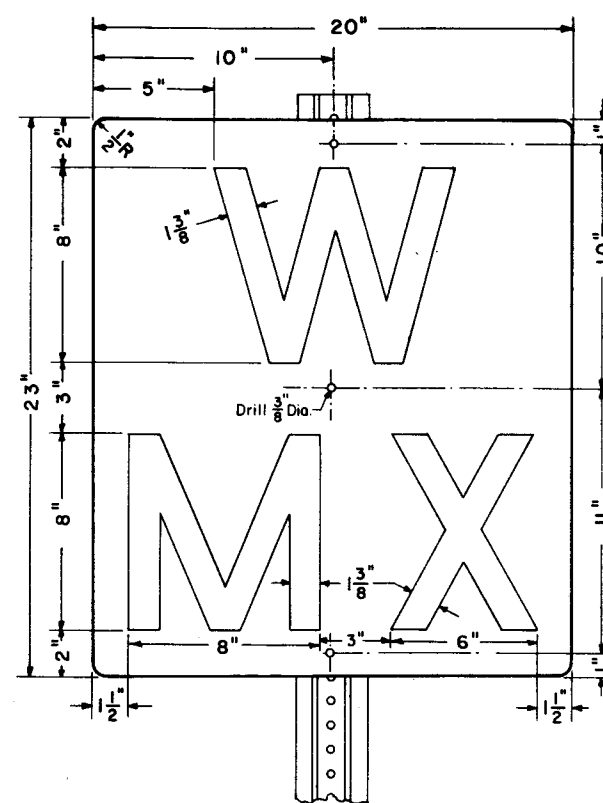


SIGN "A"

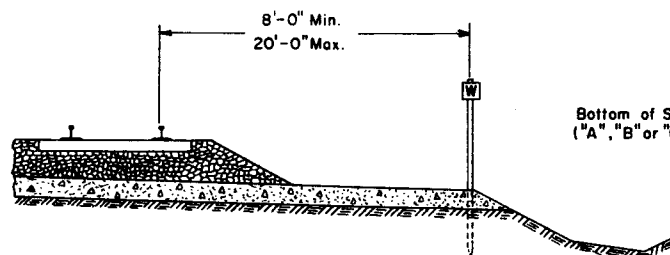


SIGN "B"

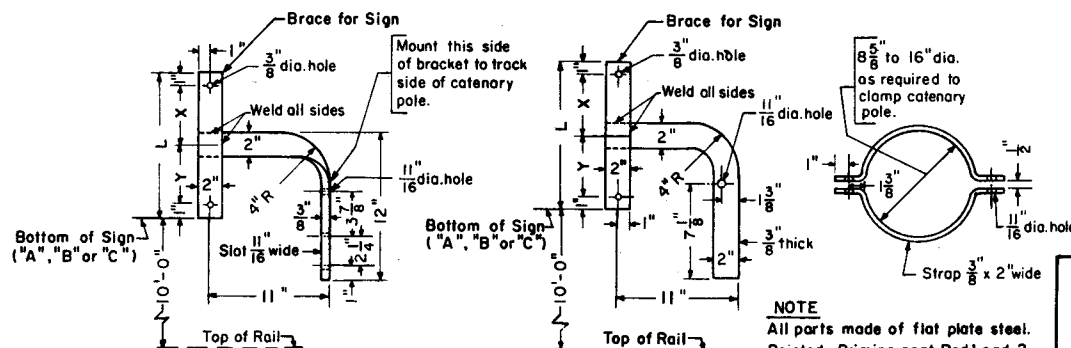


SIGN "C"

LEGAL REQUIRED DISTANCES FOR WHISTLE SIGNS		
LOCATION	MINIMUM (FT.)	MAXIMUM (FT.)
CANADA	1320	—
DELAWARE	900	—
ILLINOIS	1320	—
INDIANA	1320	—
MARYLAND	—	—
MASSACHUSETTS	1320	—
MICHIGAN	660	—
NEW JERSEY	900	—
NEW YORK	1320	—
OHIO	1320	—
PENNSYLVANIA	—	—
VIRGINIA	900	1800
WEST VIRGINIA	990	—



TYPICAL LOCATION OF WHISTLE SIGNS



TYPE "A"

Bracket For "H", Box and Built-Up
Catenary Poles

**METHOD FOR ATTACHING WHISTLE SIGNS
TO CATENARY POLES**

SIGN	L	X	Y
A	12"	5"	5"
B or C	23"	10"	11"

TYPE "B"

Bracket and Clamp For
Tubular Catenary Poles

NOTE
All parts made of flat plate steel.
Painted—Priming coat Red Lead, 2
coats of Black Paint

GENERAL NOTES

USE

- Sign "A"—Where whistle signal is to be sounded at whistle sign.
- Sign "B"—At designated locations, whistle signal is not to be sounded, except in emergency.
- Sign "C"—At designated locations, whistle signal is to be sounded at whistle sign for multiple crossings and prolonged or repeated until the last crossing is reached.

LOCATION

Prescribed sign shall be placed at a sufficient distance in advance* of crossing, for which whistle signal is to be sounded, to give 30 seconds warning at Normal Speed, where practicable, but not less than 1200 feet, unless otherwise specified by local ordinances or legal requirements, as indicated on this plan.

Sign shall be located on the right hand side of single track or outside track of multiple track lines approaching crossing in the assigned direction of traffic, as near as practicable to the field side of the roadbed shoulder not less than 8'-0" nor more than 20'-0" from the gage of the near rail.

In multiple track territories, where one or both outside tracks are signalled for operation in both directions, additional sign may be placed opposite prescribed sign on left hand side of tracks, subject to approval of the Chief Engineer—M.W. upon written request over the signature of the General Manager.

CONSTRUCTION

Signs shall be of 0.081"—6061-T6 aluminum sheet with one side covered with No. 2270 Wide Angle Silver Flat Top Scotchlite and No. 605 Black Scotchal letters or equivalent.

Signs shall be mounted on post in accordance with Standard Plan No. 78480-1.

In overhead electrified territory, whistle signs shall be mounted on catenary poles with brackets as shown below.

Note: * Direction from which trains are approaching.



78410-A

WHISTLE SIGNS

NOVEMBER, 1968

H. P. ...
Chief Engineer—Maintenance of Way

A. ...
Asst. Vice President—Engineering