

FIGURE 4
19-M53797

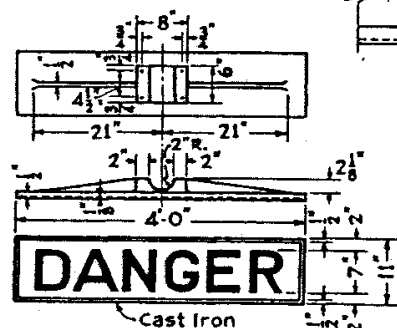
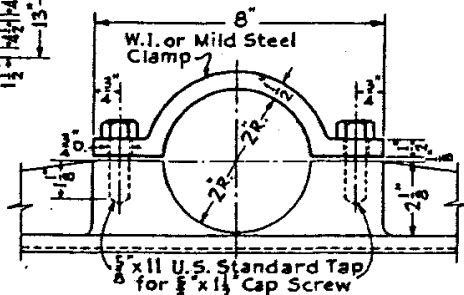
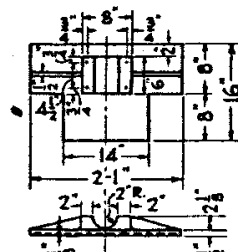


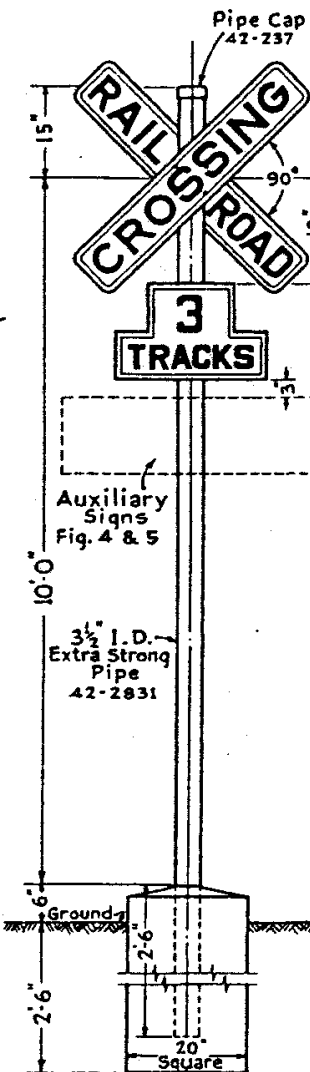
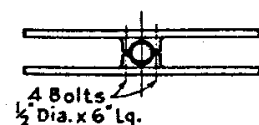
FIGURE 5
19-M53795-F



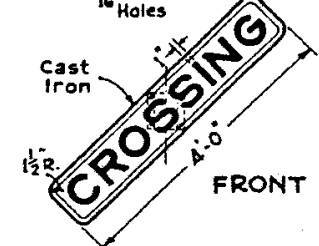
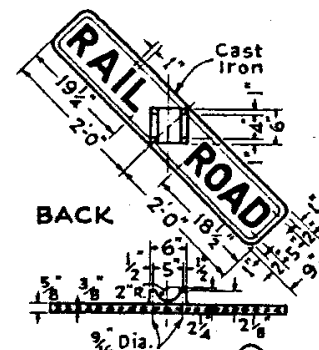
CLAMP FOR SIGNS
1C-641



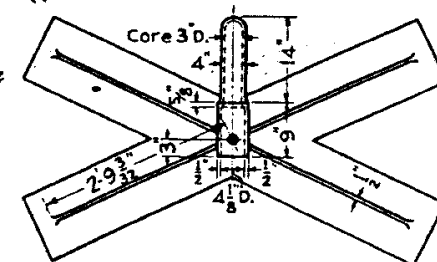
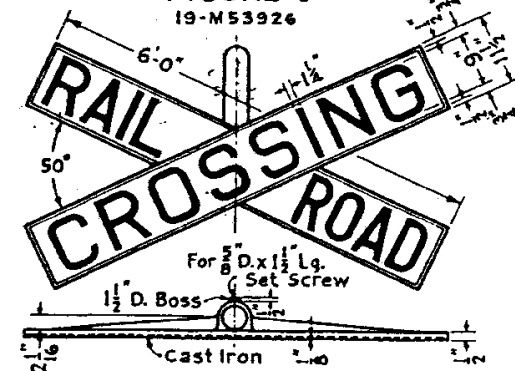
MULTIPLE TRACK SIGN
FIGURE 3
19-M53911



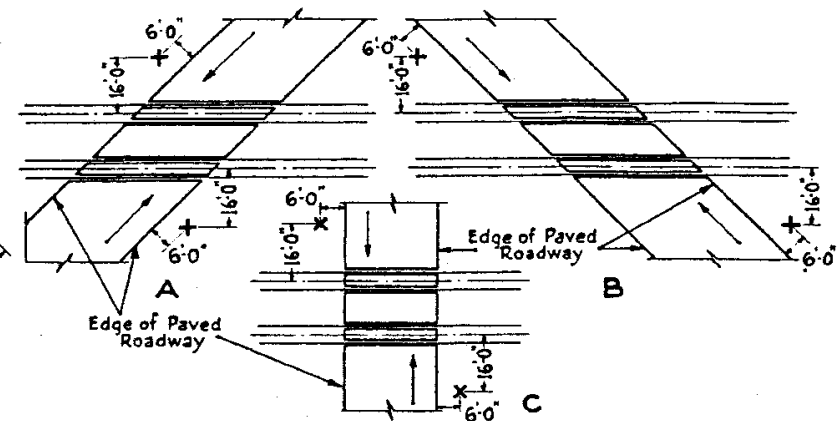
GENERAL ASSEMBLY



90° DOUBLE FACED SIGN
FIGURE 1
19-M53926



50° SINGLE FACE SIGN
FIGURE 2
19-M53794



TYPICAL LOCATIONS

Highway Crossing Signs as shown in the General Assembly shall be erected on each side of the railroad crossing, on the right hand side of the highway and placed at a point which shall afford the best view to all approaching the crossing. Any deviation from the location of crossing signs, as shown on this plan, shall be at the direction of the Public Authorities having jurisdiction.

The 90° Crossing Sign, Figure 1, shall be used universally except where State Laws require the 50° Crossing Sign, Figure 2. When the distance between any two tracks or group of tracks is 10 feet or more, a crossing sign shall be established on each side of each single track or group of tracks, so separated. At a crossing of two or more tracks, auxiliary sign, Figure 3, shall be included with a numeral indicating the number of tracks to be crossed. Auxiliary Signs, Figures 4 & 5 shall be used only in compliance with the State Laws. Letters, numerals and borders of all signs shall be raised in relief by with a slight draft, as shown.

All signs shall have the letters and numerals black and the borders and background white. All surfaces shall be well sanded to remove corrosion, oil and dirt, shall be cleaned with turpentine substitute and dried thoroughly. The faces of all signs shall have one coat, white primer, Ref. 47-3366, then one coat, black and background, one finish coat, self cleaning white, Ref. 47-33152. The letters and numerals shall have a finish coat, black enamel, Ref. 47-3315. The backs of all signs shall have one coat, zinc chromate primer, Ref. 47-2077, then a finish coat, black enamel, Ref. 47-3315. The post shall have one coat, white primer, Ref. 47-3366, then one finish coat, self cleaning white, Ref. 47-33152 or one coat, aluminum, Ref. 47-33159.

Where State Laws require reflectorization of Highway Crossing Signs, existing cast iron signs shall be reflectorized by the overlay method.
New or replacement signs where reflectorization is desired, shall be in accordance with Plan 78301-1).

Installation of Flashing Lights shall be in accordance with Standard Signal Plan S-463-1).



78300-C

THE PENNSYLVANIA RAILROAD
STANDARD
HIGHWAY CROSSING SIGNS
CAST IRON

OFFICE OF CHIEF ENGINEER, PHILA., PA.-MAR. 1958

J. R. Hunsch
Chief Engineer