

**PASSENGER STATION  
BLOCK & INTERLOCKING SIGNS**  
6063-T6 Extruded Aluminum

The end dimensions shall be generally as shown, striking a balance according to the shape of the first and last letters.

Signs in accordance with this plan shall be used at Passenger Stations of relatively light traffic, Block and Interlocking Stations.

Letters for Signs shall be in accordance with Standard Plan of Letters and Numerals, 78011-1. The height of letter desired shall be achieved by the proportional or visual aid method of enlargement. Spacing between letters shall be well balanced to attain a symmetrical appearance. Spacing between parts of names or words shall generally be 3/4 of the height of the letters.

Passenger Station Signs shall use the extended (full size) type of letters, except where length of name and end spacing exceeds the area (space) in which the sign will be placed.

Block and Interlocking Station Signs shall use the condensed type of letters.

Passenger Station Signs shall be two in number, shall be located on each end of Passenger Station or Passenger Station Platform Shelter.

Block and Interlocking Station Signs shall be two in number, shall be attached on each side of structure in conspicuous positions, where needed.

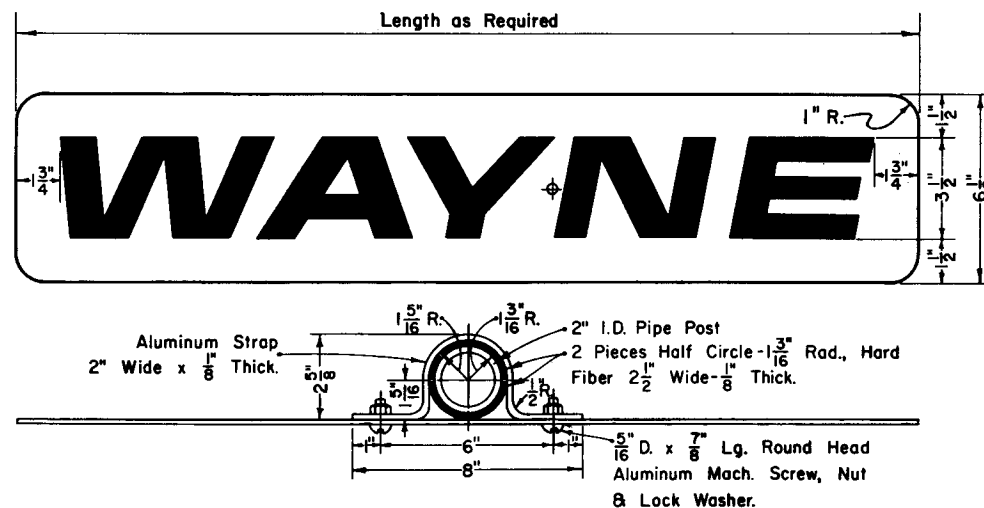
The face of sign shall be covered with Special 650 Series Green, Color Standard RQ15634 Scotchcal Brand Marking Film with No. 2270 Wide Angle Silver Flat-Top Scotchlite letters.

Aluminum for Signs shall be thoroughly cleaned and degreased by a suitable method before applying sheeting material.

Extruded Aluminum Signs shall be attached by 5/16" Dia. x 3 1/2" Lg. Aluminum Lag Screws or by Aluminum Bolts of suitable length.

When attaching Signs to flat surfaces, 1" furring strips shall be used to hold sign away from structure.

Passenger Station Approach Sign shall be attached to platform lamp post by 2" x 1/8" thick aluminum strap with 1/8" thick fiber between steel post and strap and sign. Strap and sign shall be held firmly to post by 5/16" Dia. x 7/8" Lg. aluminum machine screws, nuts and lock washers.



**PASSENGER STATION  
APPROACH SIGN**  
6061-T6 Sheet Aluminum 1/8" Thick



78159-A

**PENN CENTRAL**  
STANDARD

**REFLECTORIZED ALUMINUM STATION SIGNS  
REQUIRED FOR OPERATING PURPOSES  
(MAY BE USED FOR MINOR PASSENGER STATIONS)**

APRIL 1970

*John J. Hannon*  
Chief Engineer - Maintenance of Way

*John J. Hannon*  
Ass't. Vice President - Engineering