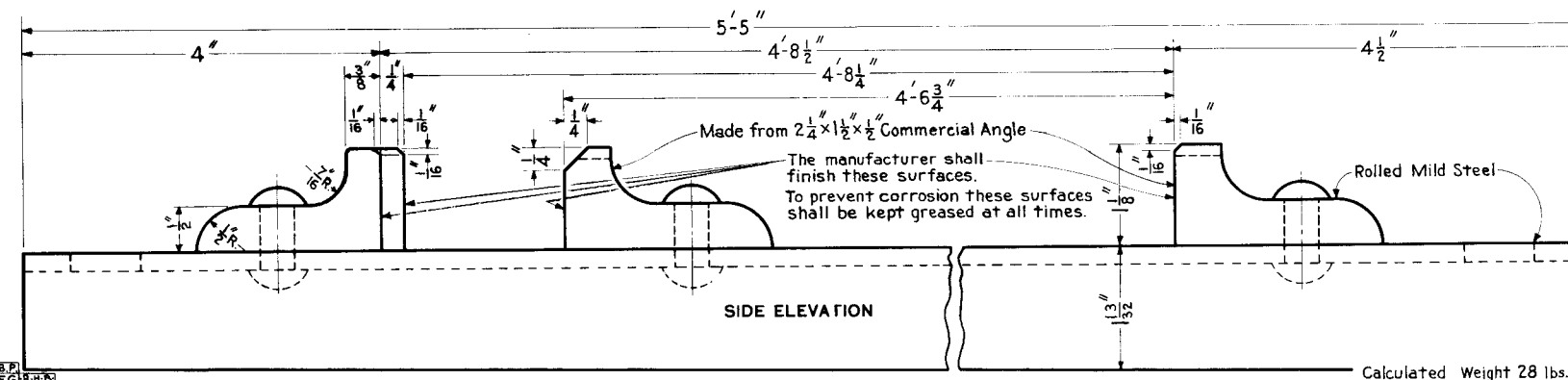


NOTE:- All Track Cage Test Templates must have the manufacturer's name or trade-mark, The Pennsylvania Railroad Monogram, year manufactured, 4'-8½", 4'-8" and 4'-6" plainly stamped in the positions indicated.

In cases when Track Cage Test Templates are made in P.R.R. Shops the name of shop shall be given in place of manufacturer's name or trade-mark.

When checking Track Cages care must be exercised to see that both fingers on the fork end are touching the angle before the single finger on the other end is put into position.



77320-C



**THE PENNSYLVANIA RAILROAD
STANDARD**

TRACK GAGE TEST TEMPLAT

OFFICE OF CHIEF ENGINEER, PHILA., PA., MAY, 1924

Corrac

OFFICE OF CHIEF ENGINEER
L. L. Lushington
 Engineer of Standards

Approved


Chief Engineer