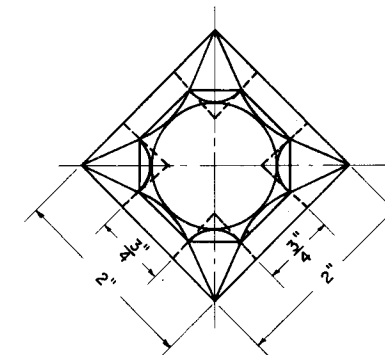


Eyes Tapered to Center
4° on Long Diameter
3° on Short Diameter

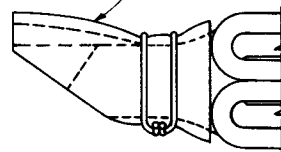
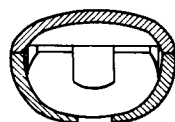
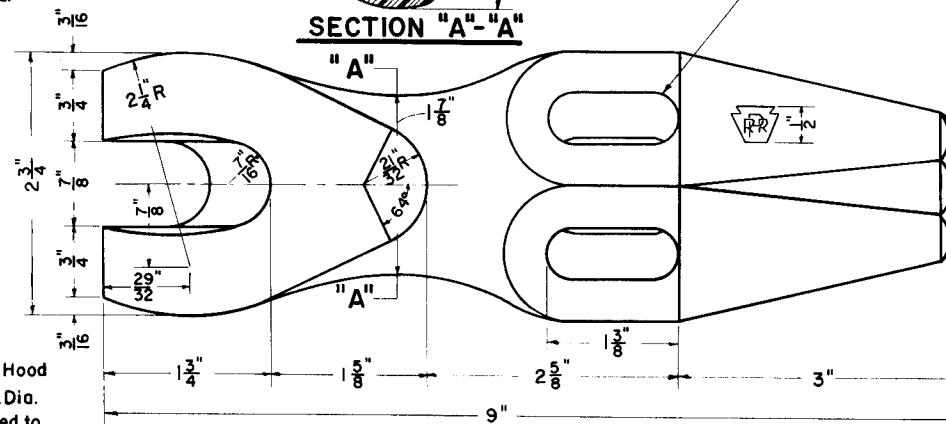
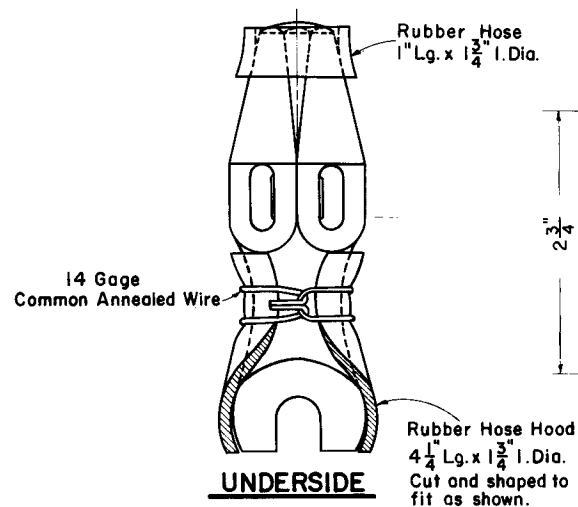


Track Spike Lifters shall be of Carbon Steel and in accordance with the following Chemical Specifications :-

Carbon	:-	0.55 to 0.70
Manganese	:-	0.60 to 0.90
Phosphorous	:-	0.05 Max.
Sulphur	:-	0.05 Max.

Track Spike Lifters shall have Manufacturers Name or Trade-Mark and The Pennsylvania Railroad Insignia stamped in the metal in position indicated.

Track Spike Lifters manufactured in Pennsylvania Railroad shops shall have name of shop stamped thereon.



77158-B



THE PENNSYLVANIA RAILROAD
STANDARD
TRACK SPIKE LIFTER

OFFICE OF CHIEF ENGINEER, PHILA., PA.

AUG. 1965

E. J. Hansen
Chief Engineer