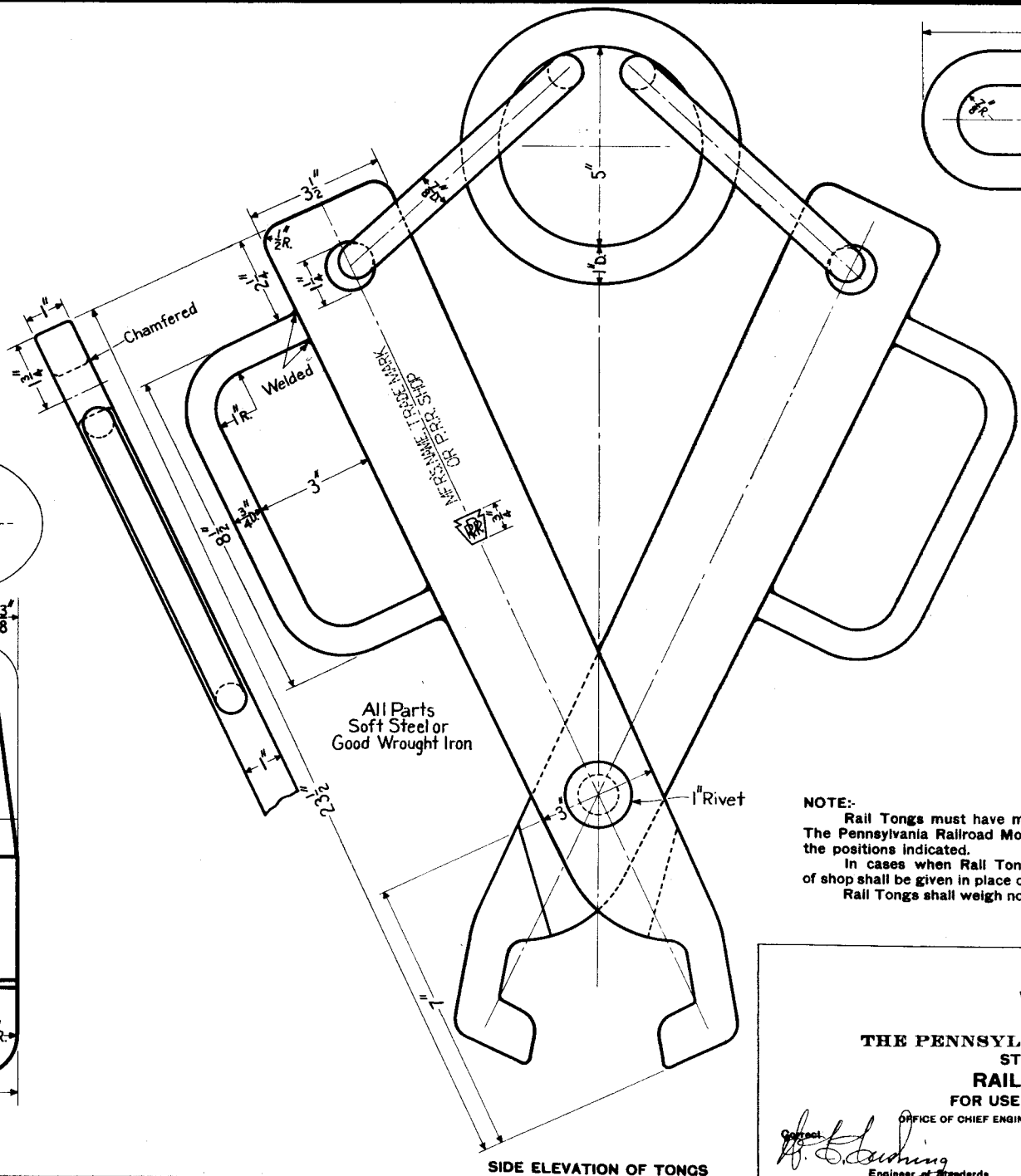
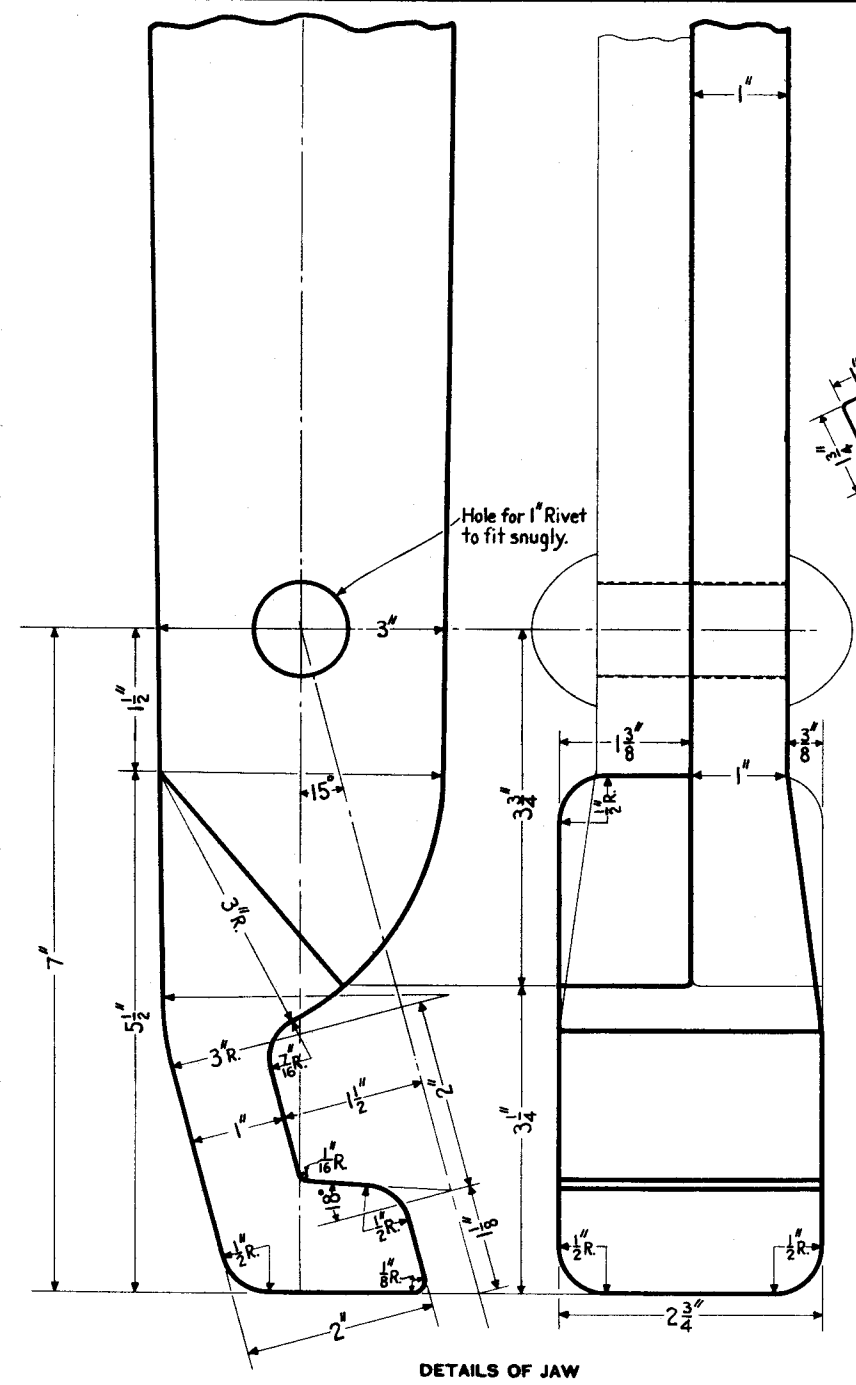
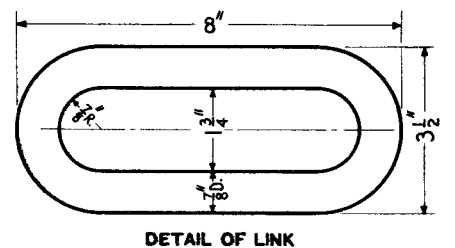


2. other copy (1)




NOTE:- Rail Tongs must have manufacturer's name or trade mark, and The Pennsylvania Railroad Monogram stamped plainly in the metal in the positions indicated.

In cases when Rail Tongs are made in P.R.R. Shops the name of shop shall be given in place of manufacturer's name or trade-mark.




Rail Tongs shall weigh not more than 61 lbs. nor less than 56 lbs.

77008-A



THE PENNSYLVANIA RAILROAD
STANDARD
RAIL TONGS
FOR USE WITH CRANE

OFFICE OF CHIEF ENGINEER, PHILA., PA., JUNE, 1930

Contract   Approved 

Engineer of Standards Chief Engineer