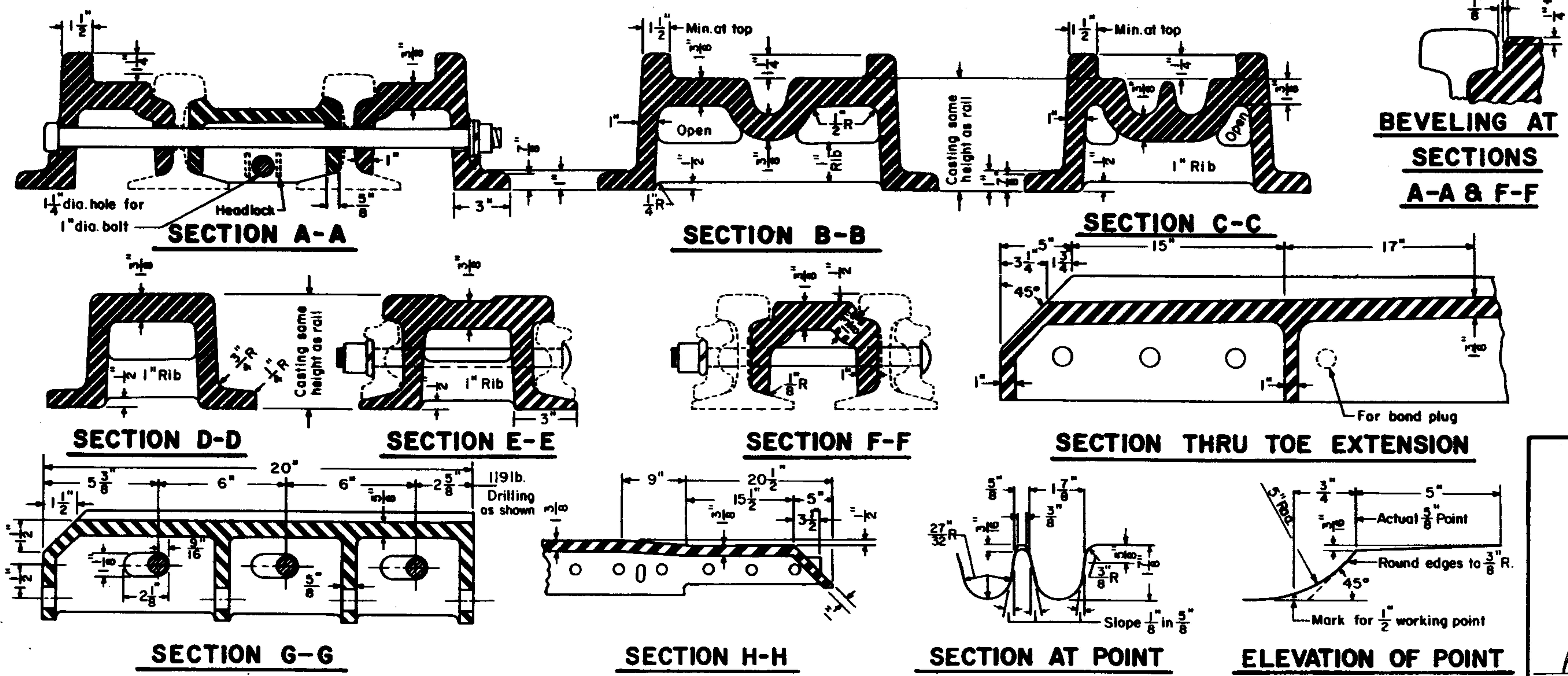


### FROG TIE PLATES REQUIRED


- 2 - FT 20 Mod.
- 2 - FT 23 Mod.
- 3 - FT 27
- 2 - FTH 23
- 4 - FTH 27
- 2 - FTH 27 Mod.
- 1 - FTH 35
- 2 - FTR 29
- 2 - FTR 33



### NOTES

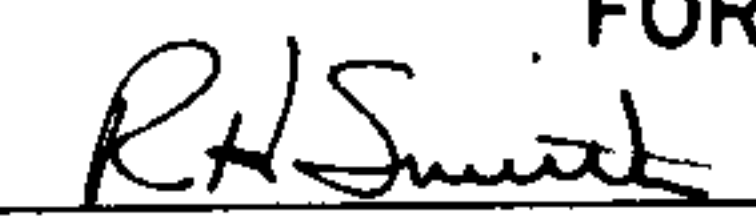
- 1- This plan is for use with A.R.E.A. recommended standards for 119 lb. or 140 lb. R.E. rail.
- 2- Workmanship and materials shall be as per current "A.R.E.A. Specifications."
- 3- Bond plugs to be provided by the manufacturer.
- 4- All bolts shall be dipped immediately before applying (so that all the threads are thoroughly coated) in NO-OX-ID "GG" Grease manufactured by The Dearborn Chemical Company.
- 5- All frog tie plates as per P.C. Plan 72105-().


74151-B



**PENN CENTRAL**  
STANDARD

**NO. 6 SOLID SELF-GUARDED  
MANGANESE STEEL FROG**  
FOR 119 LB. or 140 LB. R.E. RAIL  
JUNE, 1974

  
 Chief Engineer - Maintenance of Way

  
 Chief Engineering Officer