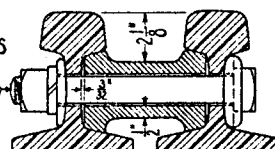
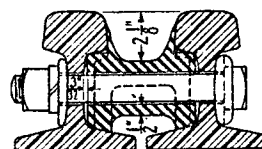


BOLTS FOR ONE HEEL JOINT.
 For 130 lbs.P.S. 2 Bolts - $1\frac{1}{8}$ " X 12"
 2 Bolts - $1\frac{1}{8}$ " X 13"
 For 100 lbs.P.S. 2 Bolts - $1\frac{1}{8}$ " X 12"
 2 Bolts - $1\frac{1}{8}$ " X 13"

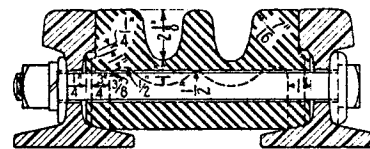
ALL BOLTS OTHER THAN JOINT BOLTS
 $\frac{1}{8}$ " Bolt for 130 lbs.P.S.
 $\frac{1}{8}$ " Bolt for 100 lbs.P.S.



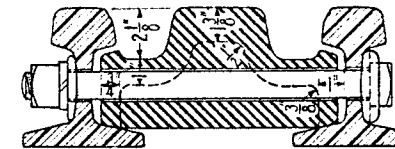
SECTION A-A



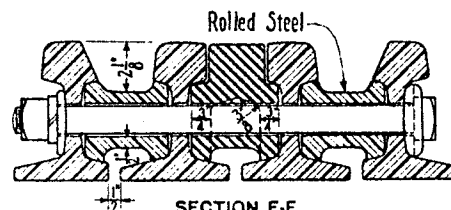
SECTION B-B



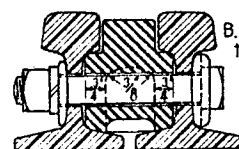
SECTION C-C



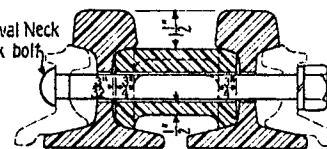
SECTION D-D



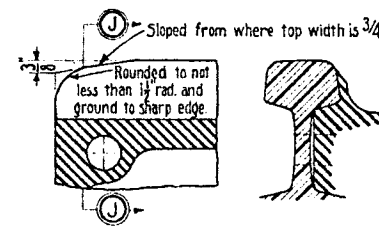
SECTION E-E



SECTION F-F



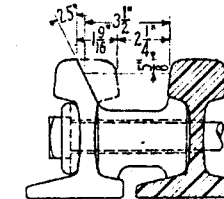
SECTION G-G



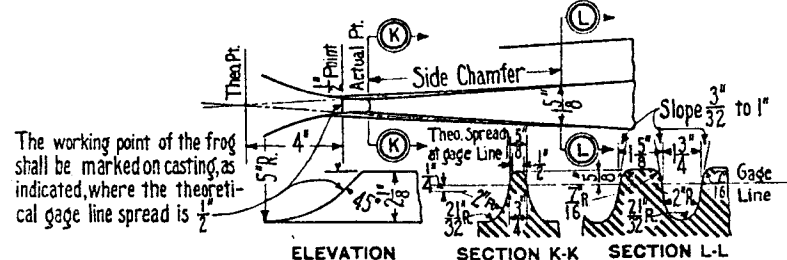
SECTION H-H



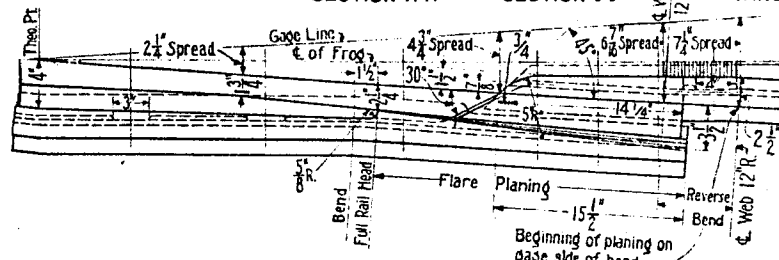
SECTION J-J



PLANING AT END OF WING RAIL



DETAIL OF POINT AND FLANGWAY



DETAIL OF HEEL

74115-A

THE PENNSYLVANIA RAILROAD
 STANDARD

NO. 8 RAIL BOUND MANGANESE STEEL FROG
 FOR 100 AND 130 LBS. P.S. RAILS

OFFICE OF CHIEF ENGINEER, PHILA., PA., MAY, 1927

Approved *[Signature]*
 Chief Engineer

Correct *[Signature]*
 Engineer of Standards