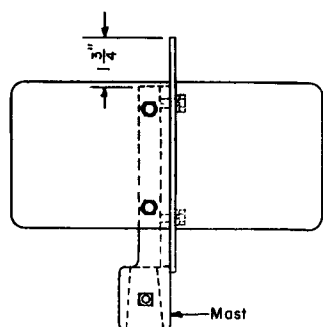
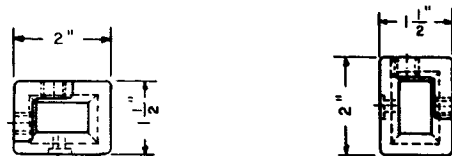


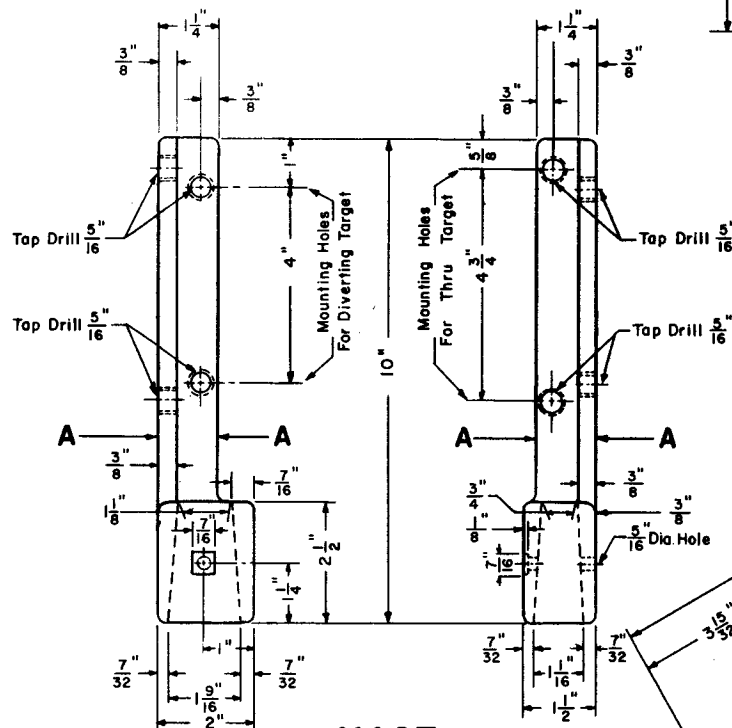
TOP VIEW



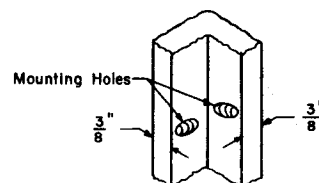
SIDE VIEW



TOP VIEWS

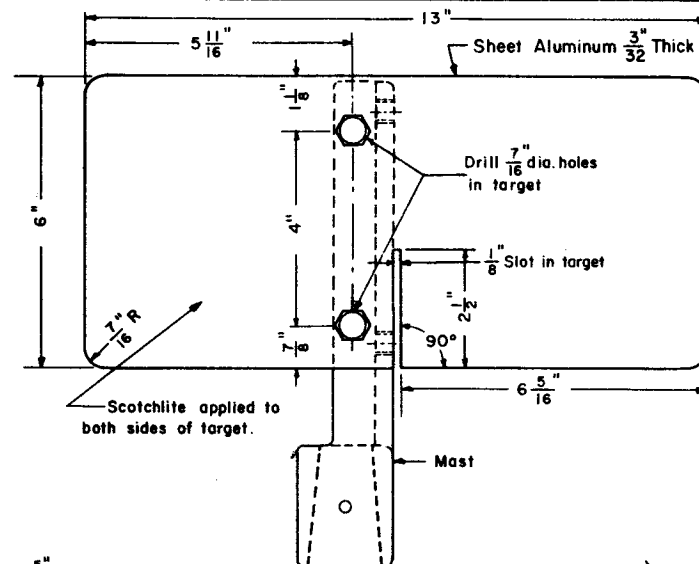


MAST
Cast Aluminum



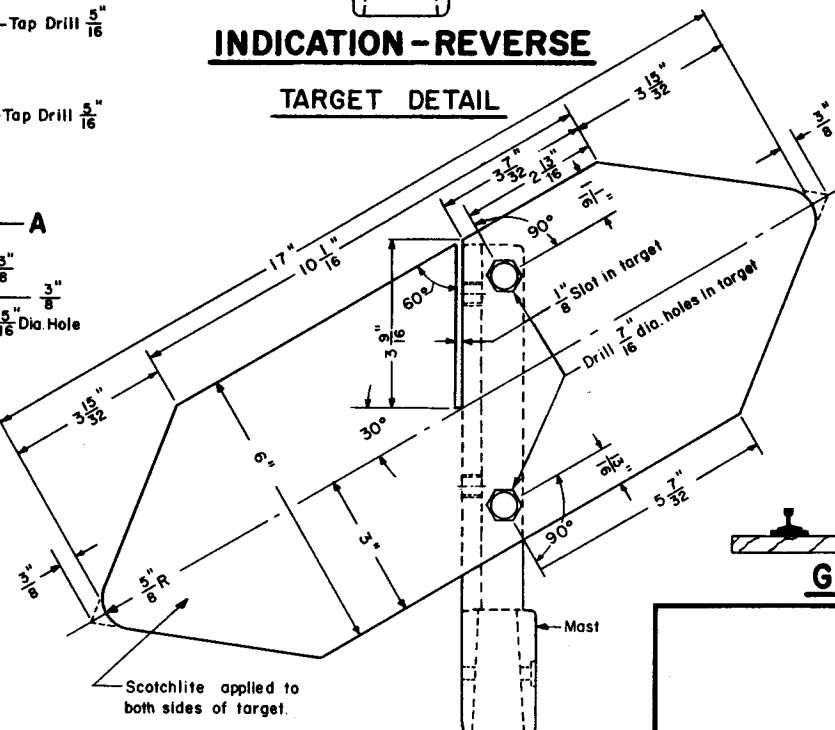
A-A

VIEW AT MOUNTING HOLES



INDICATION - REVERSE

TARGET DETAIL



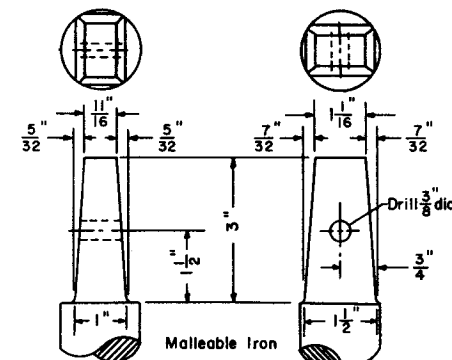
INDICATION - NORMAL

TARGET DETAIL

Sheet Aluminum $\frac{3}{32}$ inch Thick

NOTES

- 1-Reflectorized (scotchlite) Switch Target shall be used in accordance with "Penn Central Specifications for Construction and Maintenance of Track, M.W.-1" and where not prohibited by Public Authorities having jurisdiction.
- 2-All corners and edges, of mast and targets, shall have a smooth finish.
- 3-The aluminum surface of the targets shall be thoroughly cleaned with *Smutco No. 1* before the application of scotchlite by the use of heat (to activate the adhesive) and vacuum pressure (to mold the material to the aluminum surfaces).
- 4-Care should be exercised when sliding targets into slots and fastening them to the mast to reduce the possibility of damaging the scotchlite material.



TOP OF SPINDLE

Upward point shall always point away from track when switch is set normal for thru movement



GENERAL APPLICATION



73919-A

PENN CENTRAL
STANDARD

LOW SWITCH TARGET
REFLECTORIZED WITH SCOTCHLITE
FOR LOW STAND - MAIN OR YARD TRACK USE

NOVEMBER, 1970

Chief Engineer - Maintenance of Way

Chief Engineering Officer