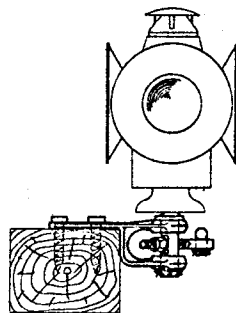
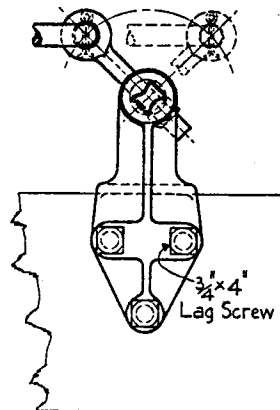


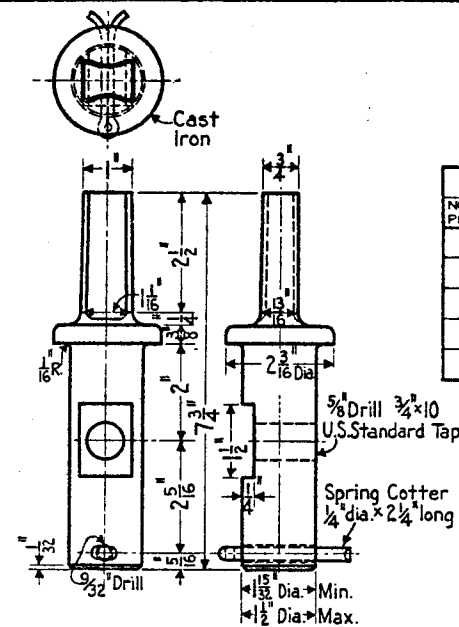
LOCATION PLAN



SIDE ELEVATION OF STAND

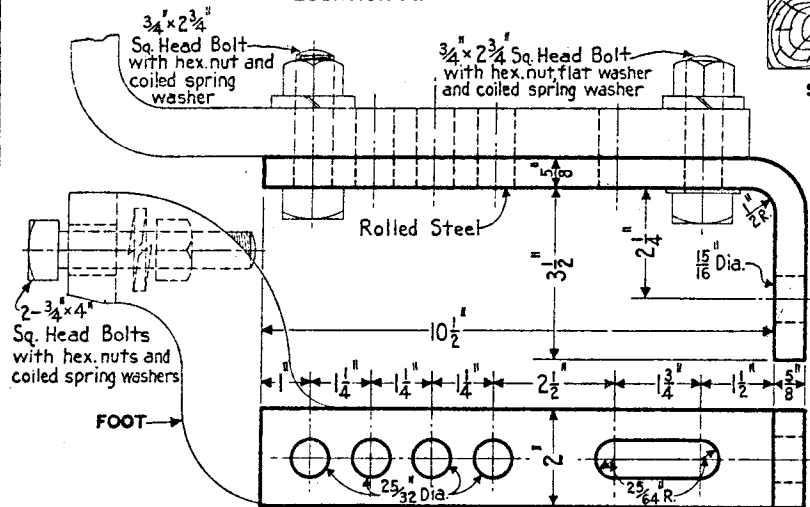


PLAN OF STAND WITHOUT LAMP



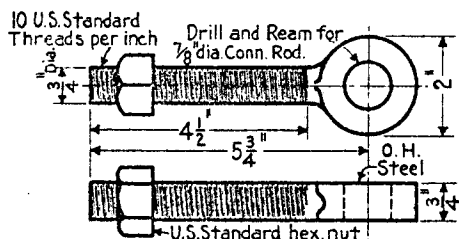
LOW STAFF

BILL OF MATERIAL		
NO. OF PIECES	DESCRIPTION	PLAN
1	Angle	As shown in heavy solid lines on this Plan.
1	Connecting Rod- with 4 nuts, 1 flat washer and spring cotter	
1	Adjustable Crank- with nut	
1	Low Staff- with flat washer and spring cotter	
1	Low Stand- with 3- $\frac{3}{4}$ " x 4" lag screws	

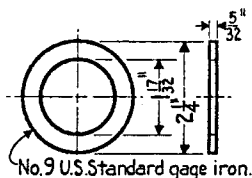


FOOT

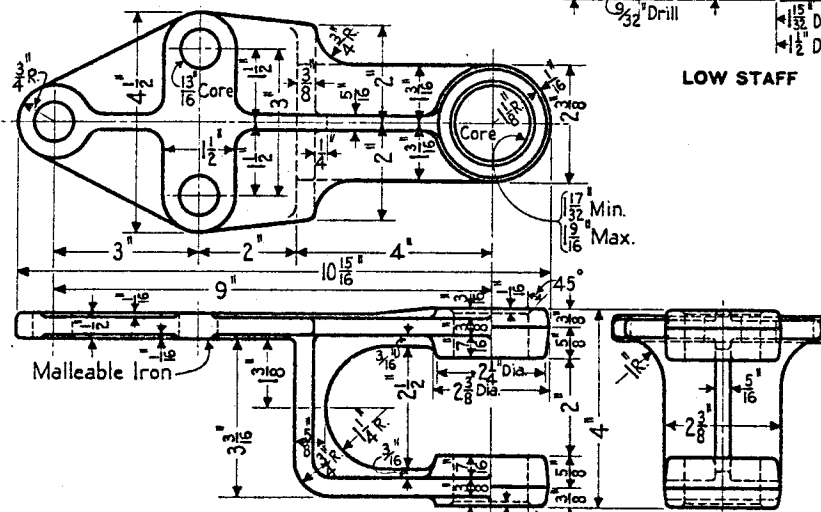
ANGLE



ADJUSTABLE CRANK



WASHER



LOW STAND

NOTE:-

Requisitions for LOW SWITCH LAMP STAND COMPLETE, as shown in heavy solid lines on this Plan, must specify length of Connecting Rod required and on such requisitions material covered by Bill of Material will be furnished.

If Foot and Bolts are required they must be specified on requisition as separate items and described as follows:

1 Foot, L.H. Standard Front Rod, No. 3212 Pl. S-321 (basic number)

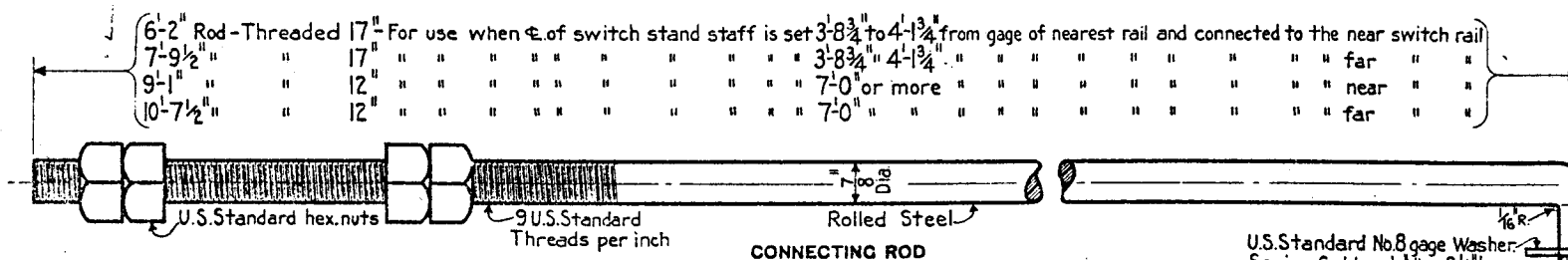
2 Bolts, Lock Rod, Sq. Hd. $\frac{3}{4}$ " X 4" with Hex. Nut and Coiled Spring Washer, Pl. S-309 (basic number)

1 Bolt, Lock Rod, Sq. Hd. $\frac{3}{4}$ " X 2 $\frac{1}{4}$ " with Hex. Nut and Coiled Spring Washer, Pl. S-309 (basic number)

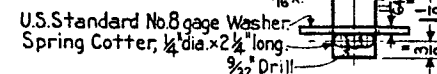
1 Bolt, Lock Rod, Sq. Hd. $\frac{3}{4}$ " X 2 $\frac{1}{4}$ " with Hex. Nut and one Coiled Spring and one Flat Washer, Pl. S-309 (basic number)

Where Front and Lock Rods are used the Angle is attached to the Foot nearest the Switch Signal Stand.

The following parts:- Low Stand, Adjustable Crank, Low Staff and Washer, shown on this Plan, are exactly like the corresponding parts shown on A.R.A. Plan No. 1399, except the necessary changes on the Low Staff.



CONNECTING ROD



U.S. Standard No. 8 gage Washer.
Spring Cotter, $\frac{1}{4}$ " dia. x 2 $\frac{1}{4}$ " long.

73910-A



THE PENNSYLVANIA RAILROAD
STANDARD

LOW SWITCH LAMP STAND

OFFICE OF CHIEF ENGINEER, PHILA. PA., FEBRUARY, 1927

Correct

H. L. Shilling
Engineer of Standards

Approved

H. L. Shilling
Chief Engineer