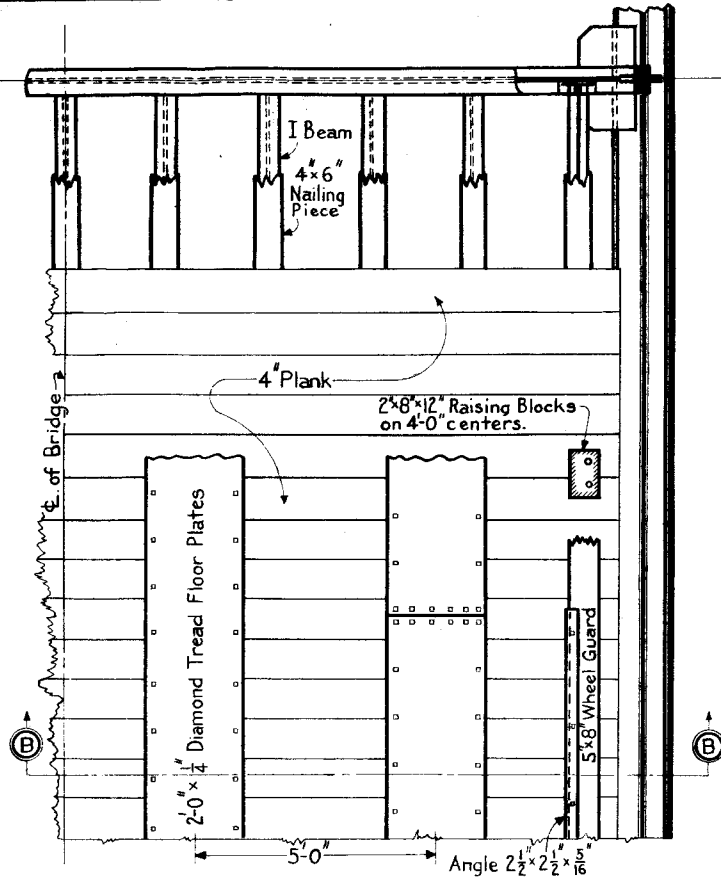
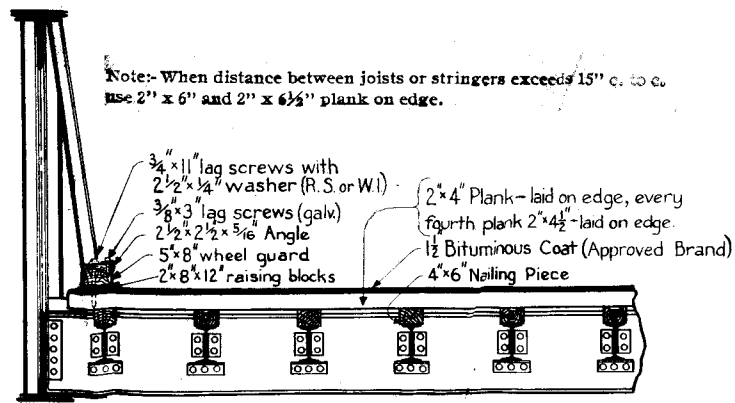


PLAN

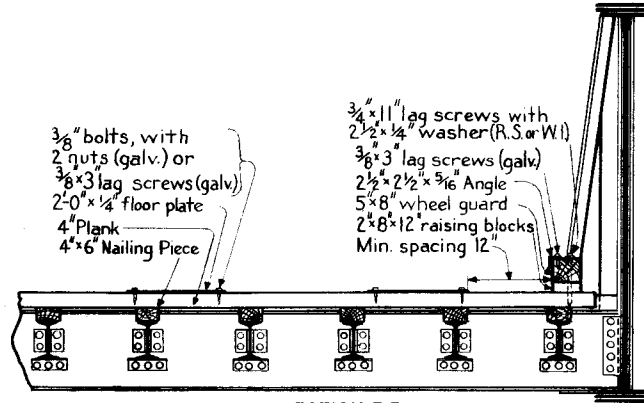


PLAN



SECTION A-A

PLANK LAID EDGEWISE



SECTION B-B

PLANK LAID FLAT WITH STEEL FLOOR PLATES

NOTE:-

- All wood shall be ordered worked to finished sizes.
- All wood shall be treated in accordance with the Specifications for the Preservative Treatment of Wood by Pressure Processes.
- Cuts, holes, etc., made subsequent to treatment shall be painted in accordance with the Specifications for the Preservative Treatment of Wood by Painting with Creosote Oil.
- Tongued and grooved plank may be used where necessary.
- Lag Screws shall not be driven but must be screwed into position.
- Lag Screws for Wheel Guard shall be made as shown on Standard Plan basic number - 79301-
- Bituminous material should be applied only when the air temperature is above 45° F.

79405-B



THE PENNSYLVANIA RAILROAD
STANDARD

WOODEN PAVING FOR HIGHWAY BRIDGES

OFFICE OF CHIEF ENGINEER, PHILA., PA., SEPTEMBER, 1927

Correct

W. L. Lushington
Engineer of Standards

Approved

W. L. Lushington
Chief Engineer