

BILL OF MATERIAL FOR ONE SWITCH COMPLETE	
NO. OF PIECES	DESCRIPTION
2	SWITCH RAILS (With Foot Guards, Stops, Clips and Bolts, Complete.)
1	GAUGE PLATE
6	No.1 PLATES
6	No.1A "
2	No.2 "
2	No.3 "
2	No.4 "
4	No.5 "
2	No.6 "
8	ADJUSTABLE BRACES (With Bolts, Spring Washers, Dbl. Nuts & Dbl. Washers)
2	RODS (With Basket and Sleeve, Complete)
2	HEEL BLOCKS (With Bolts and Thimbles, Complete) Surfacted as shown
2	JOINT BARS (Bent, Surfacted and Sheared as shown)

NOTE:

Requisition must specify length of switch, weight and type of rail desired, whether switch is to be insulated on non-insulated and the number of this plan. If the switch is non-insulated, gauge plates and switch rods must be furnished solid.

For details of switch plates, adjustable braces, switch clips, rod bolts, gauge plate and switch rod insulation, switch rods and basket, etc. see standard plans covering these details.

When switches are used with front and lock rods, the clearance between gauge plate and No. 1 rod may be increased by moving clips back one pair of holes and reversing the switch rod.

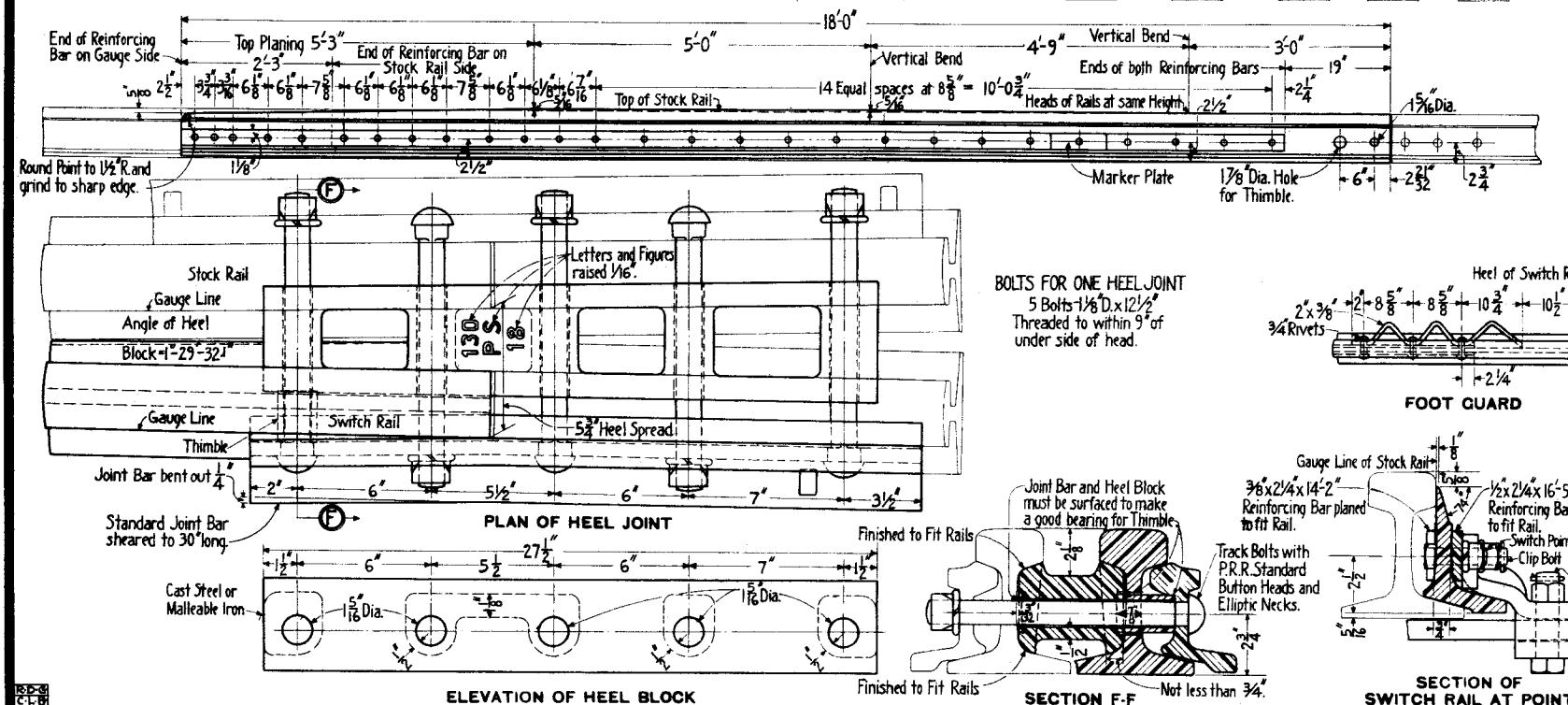
All rail parts must meet the requirements of No. 1 Rails as prescribed by The Pennsylvania Railroad Company's Specifications for Carbon Steel Rails.

Heel joint bolts, switch point bolts and clip bolts must conform to The Pennsylvania Railroad Company's Specifications for Quenched Carbon and Alloy Steel Track Bolts.

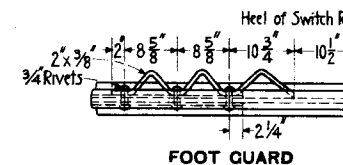
All spring washers must conform to The Pennsylvania Railroad Company's Specifications for Helical Spring Washers - basic number C. E. 7 ().

Gauge plate shall be marked by deeply cut characters, not less than one half inch high, with the plate designation in the position as shown.

A Malleable Iron Marker Plate, indicating in raised or deeply cut characters, not less than one half inch high, the name of the manufacturer, the month and year shipped, the length, weight and type of switch rail, must be securely fastened to each switch rail in position as indicated on this plan.



BOLTS FOR ONE HEEL JOINT
5 Bolts 1 1/8" D. x 12 1/2"
Threaded to within 9" of under side of head.



73104-A

THE PENNSYLVANIA RAILROAD
STANDARD
18 FT. SPLIT SWITCH
FOR 130 LBS. P.S. RAILS
DRILLED 2 3/32" - 6 - 7

OFFICE OF CHIEF ENGINEER, PHILA., PA., APRIL, 1920.

Approved

Chief Engineer