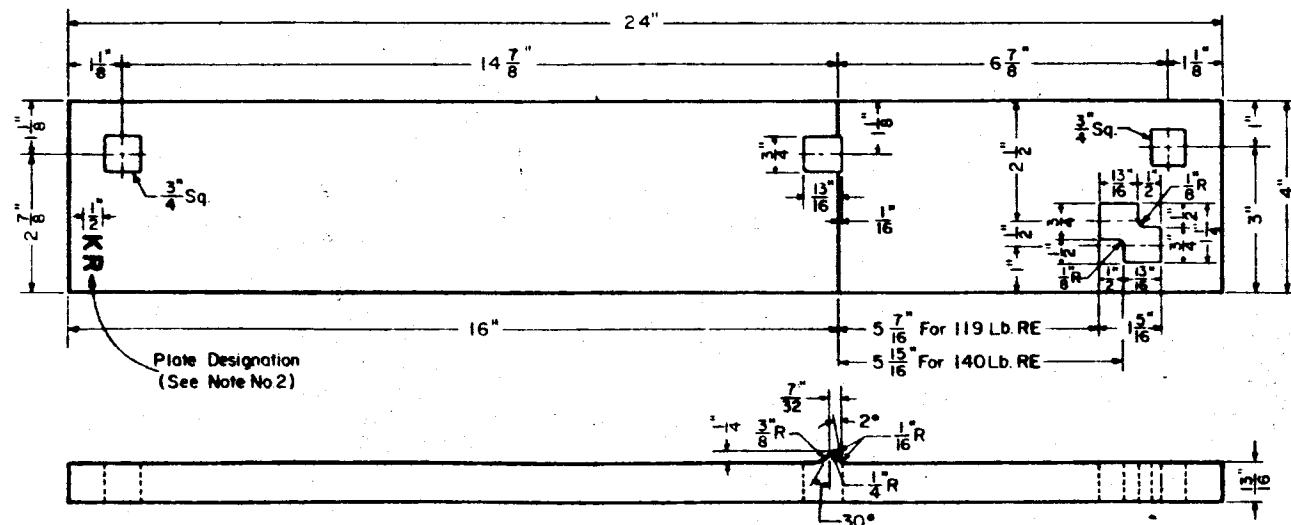


JR-PLATE



KR-PLATE

NUMBER OF PLATES REQUIRED FOR VARIOUS TURNOUTS

TURNOUT NO.	SWITCH LENGTH	RAIL SECTION	JR PLATE	KR PLATE
6	11 FT. (Str.)	119 RE	10	10
	13 FT. (Cvd)	119 RE		
* 8 or 10	16 FT-6 IN. (Str.)	119 RE or 140 RE	16	16
* 15	26 FT. (Cvd)	140 RE	22	22
⊕ 20	39 FT. (Cvd)	140 RE	28	28

* In addition to the "JR" and "KR" plates shown above, 4 FT-29 plates, as per Plan 72105-(), should be used as follows:—

No. 8 or No. 10 Turnout — To be used on the 9th tie beyond heel of switch.

No. 15 Turnout — To be used on the 12th tie beyond heel of switch.

⊕ In addition to the "JR" and "KR" plates shown above 16-FT-29 plates, as per Plan 72105-() should be used on the 15th, 16th, 17th and 18th ties beyond heel of switch.

The FT-29 plates are to be used, as there is not sufficient clearance for the use of standard tie plates and the "JR" and "KR" plates are not long enough for the specific ties mentioned above.

NOTES

1 — "JR" and "KR" plates shall conform to current A.R.E.A. Specifications for "Low-Carbon Steel Tie Plates with copper."

2 — Plates shall be marked with raised letters, not less than 1/2" high, in the positions indicated, with the plate designation as shown.



72202-A

PENN CENTRAL
STANDARD

TWIN TIE PLATES
FOR USE BEHIND HEEL OF SWITCH
119 LB. R.E. or 140 LB. R.E. RAIL

JUNE, 1974

R. H. Smith
Chief Engineer - Maintenance of Way

A. B. G. G. G.
Chief Engineering Officer