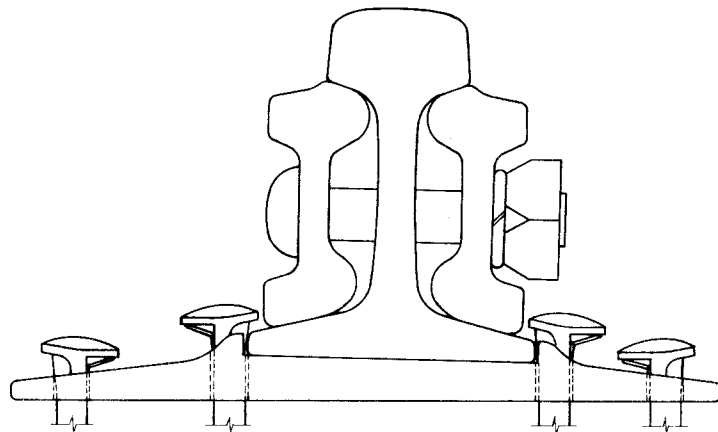
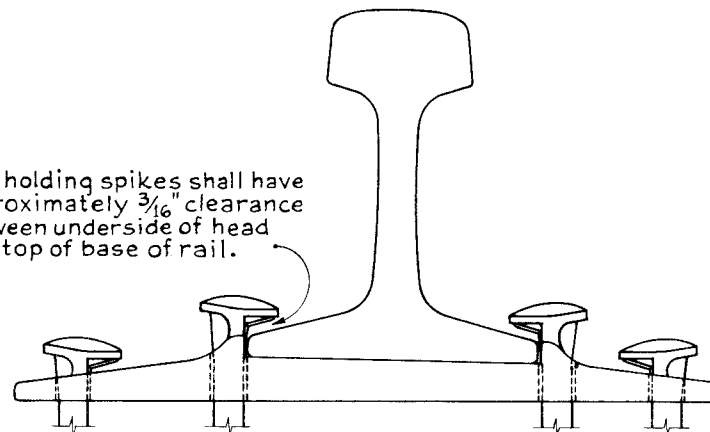


- INDICATES SPIKING ON TANGENT TRACK.
- ⊗ " ADDITIONAL SPIKES ON CURVED TRACK AS SPECIFIED.
- " HOLES TO BE USED ONLY WHEN OTHER HOLES CANNOT BE SPIKED EFFECTIVELY.



SPIKE APPLICATION WITHIN JOINT BAR LIMITS
NOTE REVERSE POSITION OF HEADS OF RAIL HOLDING SPIKES

Rail holding spikes shall have approximately $\frac{3}{16}$ " clearance between underside of head and top of base of rail.



SPIKE APPLICATION OF RAIL AND PLATE HOLDING SPIKES
TANGENT AND CURVED TRACK

Spiking shall be in accordance with
The Pennsylvania Railroad Specifications for
Construction and Maintenance of Track, C.E.78-().
Spiking on bridges and trestles shall be the
same as for Standard Ballasted Track.



72050-B

THE PENNSYLVANIA RAILROAD
STANDARD
SPIKING ARRANGEMENT
FOR TIE PLATES

OFFICE OF CHIEF ENGINEER, PHILA., PA.-JULY 1957

Chief Engineer