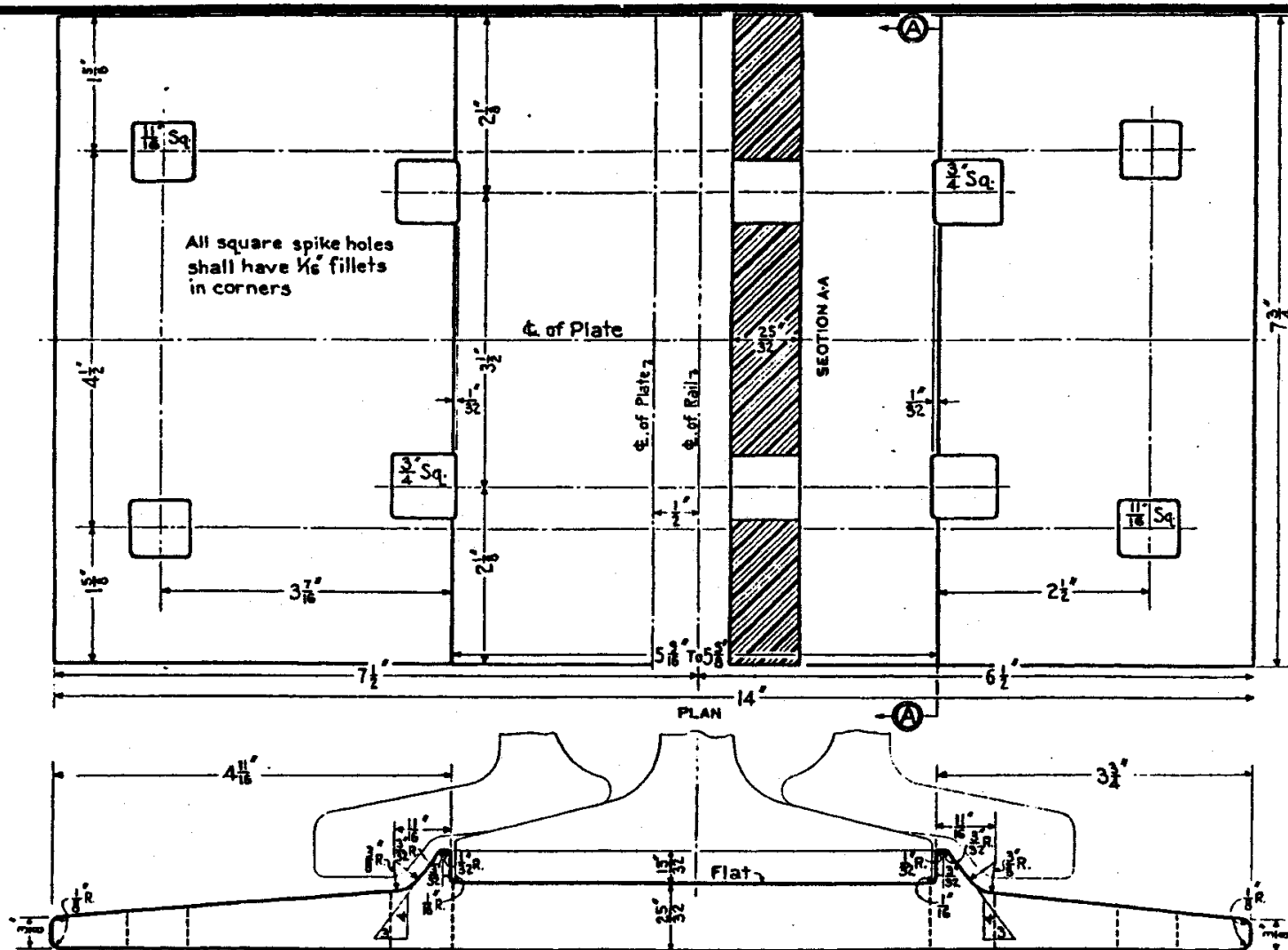


REV.
FEB. 1927
DEC. 1928
JUN. 1929
SEPT. 1932
MAY. 1933
FEB. 1942
JAN. 1947
AUG. 1947
JAN. 1948



NOTE:-

Tie Plates shall be made of steel and in accordance with The Pennsylvania Railroad Company's current Specifications for Tie Plates.
Tie Plates shall be branded with the figures 17 to designate the section; three letters, or a trade-mark to indicate the producer; and two figures being the last two digits of the year rolled.

Calculated Weight 19.97 lbs.
Bearing Area on Tie 108.5 sq. inches

72020-K



THE PENNSYLVANIA RAILROAD
STANDARD
TIE PLATE
FOR 130 LBS. P.S. RAILS

Correct
Office of Chief Engineer, PHILA., PA., JANUARY, 1925
Approved
Chief Engineer