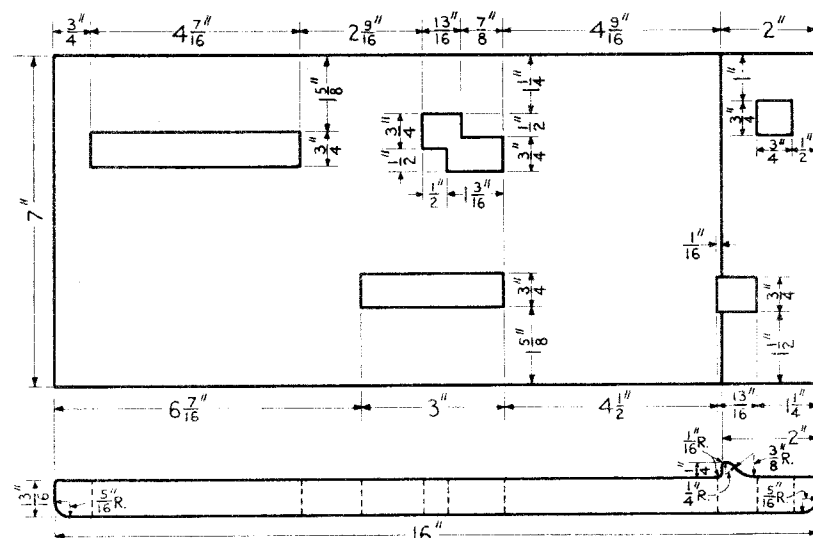
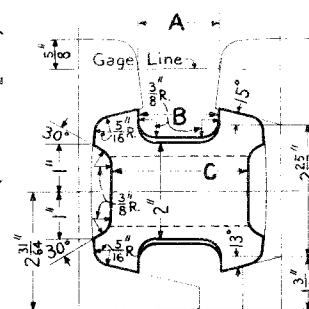


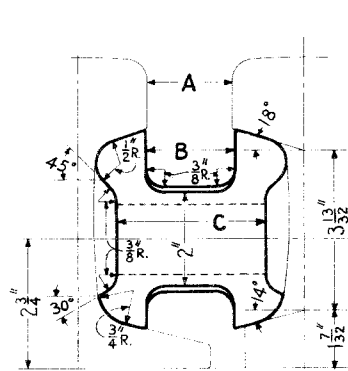
TYPICAL BRACE PLATE



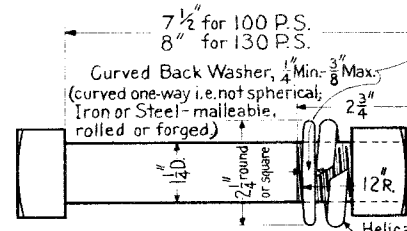
GUARD RAIL TIE PLATE



FILLER BLOCKS FOR 100 P.S.
(FOR DIMENSIONS A, B & C, SEE TABLE)



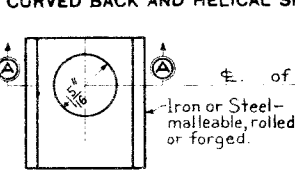
FILLER BLOCKS FOR 130 P.S.
(FOR DIMENSIONS A, B & C, SEE TABLE)



Curved Back Washer with 12\"/>



SECTION A-A



TYPICAL HEADLOCK
FOR FILLER BLOCK BOLTS

DIMENSIONS A, B and C for 100 and 130 P.S. FILLER BLOCKS	4'-8 1/2"	4'-9"
Gage of Track	100 P.S. 130 P.S.	100 P.S. 130 P.S.
Sec. of Rail	1 3/4" 1 3/4"	2 1/4" 2 1/4"
Dimension A	1 3/4" 1 3/4"	2 1/4" 2 1/4"
" B	1 45/64" 1 7/8"	2 13/64" 2 3/8"
" C	2 7/8" 3 1/8"	3 3/8" 3 5/8"

NOTE:-

Filler Blocks may be made of Iron or Steel - cast, malleable, rolled or forged of the design as shown or of single or double grooved Frog Fillers. These Frog Fillers must fit the fishing angles and the web of rail for a distance of 1/2" from above and below the base and head respectively, and shall maintain the required flange way as given in the table (Dimension A) for the various Filler Blocks. Dimensions B and C in table apply only to Filler Blocks of the design as shown.

THE AMERICAN CHAIN CO., METHEANY AND VAUGHAN TYPES OF BRACE PLATES ARE APPROVED. OTHER TYPES MAY BE APPROVED AFTER SATISFACTORY LABORATORY TESTS OR SERVICE TRIALS.

NOTE:-

For general plan showing complete Tee Guard Rails see standard plan, basic number 71805.

Tee Guard Rails must be of the same section as the Running Rail with which they are to be used.

For complete details of Brace Plates see approved plans on file in Chief Engineer's office.

Brace Plates and Filler Blocks must be marked plainly in the positions indicated by stamped or raised characters with manufacturer's name or trade-mark, month and year manufactured, 100 P.S. or 130 P.S. and 4'-8 1/2" gage or 4'-9" gage.

Guard Rail Tie Plates must conform to The Pennsylvania Railroad Company's Specifications for Medium Grade Tie Plates.

Bolt and Nut material must conform to The Pennsylvania Railroad Company's Specifications for Quenched Carbon and Alloy Steel Track Bolts and Nuts with American Standard square heads and nuts.

Helical Spring Washers must conform to The Pennsylvania Railroad Company's Specifications.

Any commercial type of Headlock with either one or two ribs placed vertically or horizontally, will be acceptable.

FOR USE WITH 4'-8 1/2" AND 4'-9" GAGES OF TRACK

71806-A



THE PENNSYLVANIA RAILROAD
STANDARD

DETAILS OF FASTENINGS FOR 100 & 130 LBS. P.S.
TEE GUARD RAILS - 11 FT. & 16 FT. - 6 IN. LONG
FOR USE IN YARDS AND SIDINGS

OFFICE OF CHIEF ENGINEER, PHILA., PA., JUNE, 1931

Approved

Chief Engineer

Chief Engineer