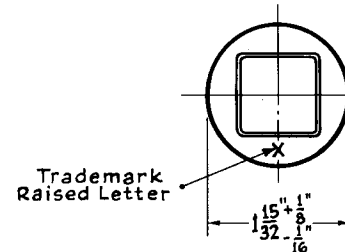
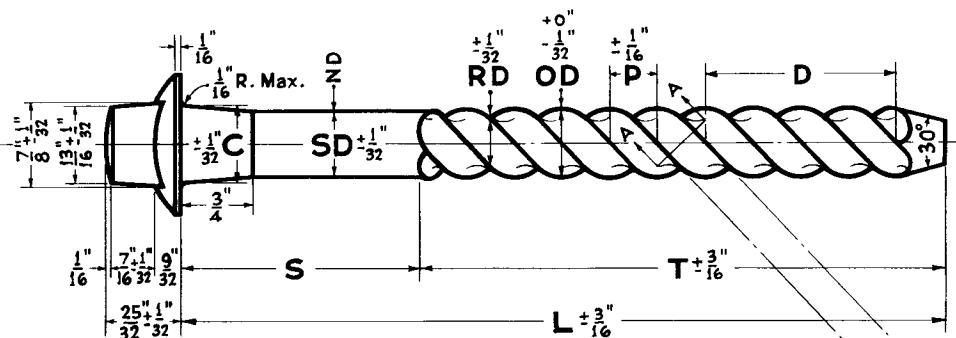


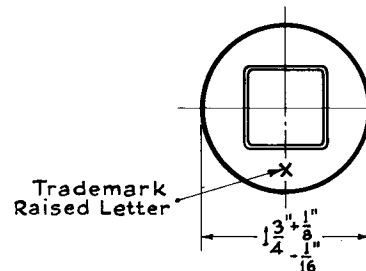
"A" OCT. 1954
 "B" MAY 1961
 "C" OCT. 1961
 "D" AUG 1965



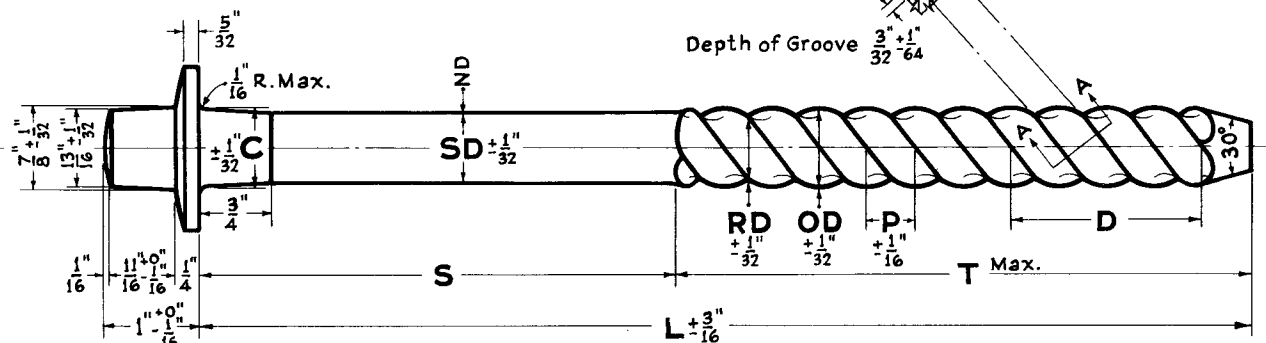
Trademark
Raised Letter



TYPE A



Trademark
Raised Letter



TYPE B

COMPONENTS	TYPE A		TYPE B	
NOMINAL DIA. (SD)	5/8"	1 1/16"	5/8"	3/4"
NUMBER OF GROOVES	4	4	4	4
SD = SHANK DIA. (ND)	5/8"	1 1/16"	5/8"	3/4"
OD = OUTSIDE THREAD DIA.	23/32"	25/32"	23/32"	27/32"
RD = ROOT DIA.	17/32"	19/32"	17/32"	21/32"
P = PITCH	1/2"	1/2"	1/2"	1/2"
D = LEAD = ONE COMPLETE TURN	2"	2"	2"	2"
C = TOP OF CONE DIA.	25/32"	27/32"	11/16"	13/16"
DIA. PREBORED HOLE FOR SHANK	3/4"	13/16"	23/32"	27/32"
DIA. PREBORED HOLE FOR THREAD	19/32"	21/32"	19/32"	23/32"

* This size is provided for use with the steel Tie Spacing Bar and similar applications where a tight fit of the cone neck is essential.

LENGTHS	TYPE A				TYPE B			
L = LENGTH OF SPIKE	6"	6 1/2"	8"	11"	12"	13"	14"	
S = LENGTH OF SHANK	3/4"	1 1/4"	2 3/4"	5"	6"	7"	8"	
T = LENGTH OF THREAD	5 1/4"	5 1/4"	5 1/4"	6"	6"	6"	6"	

Washer Head Drive Spikes shall conform to the current A.R.E.A. Specifications for Drive Spikes.



71650-D

THE PENNSYLVANIA RAILROAD
 STANDARD
 WASHER HEAD DRIVE SPIKES

OFFICE OF CHIEF ENGINEER, PHILA., PA. - MAY, 1961

L. J. Henry
 Chief Engineer

SUPERSEDES 691231-A