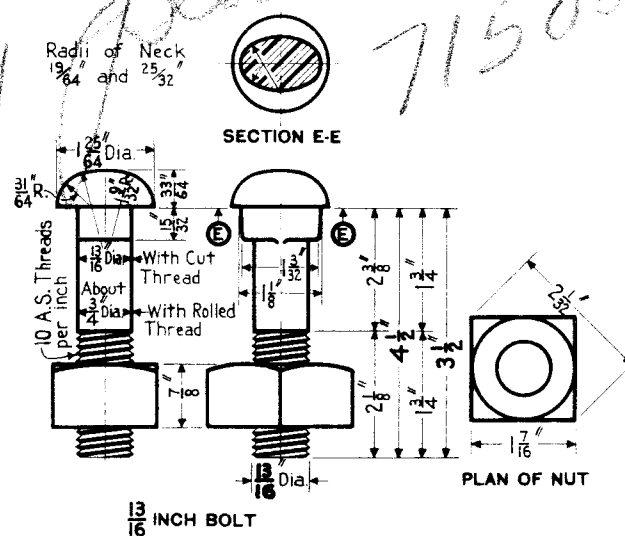
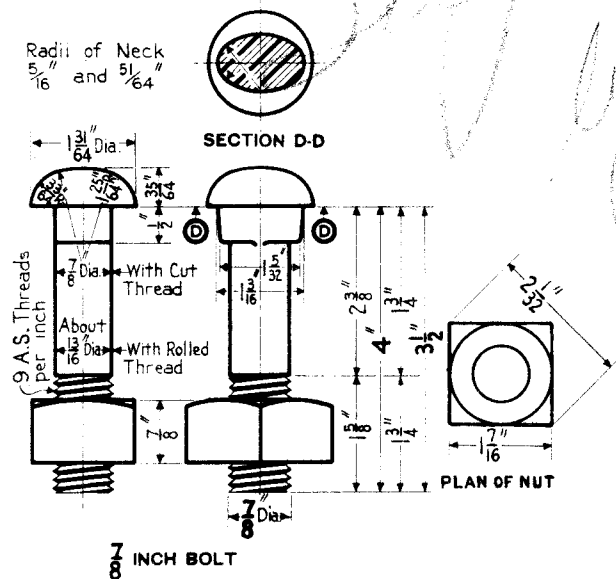
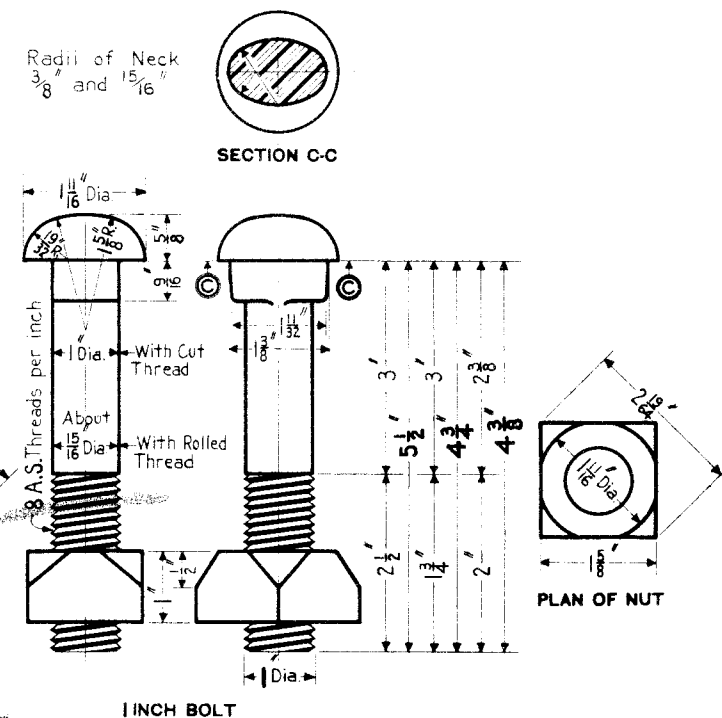
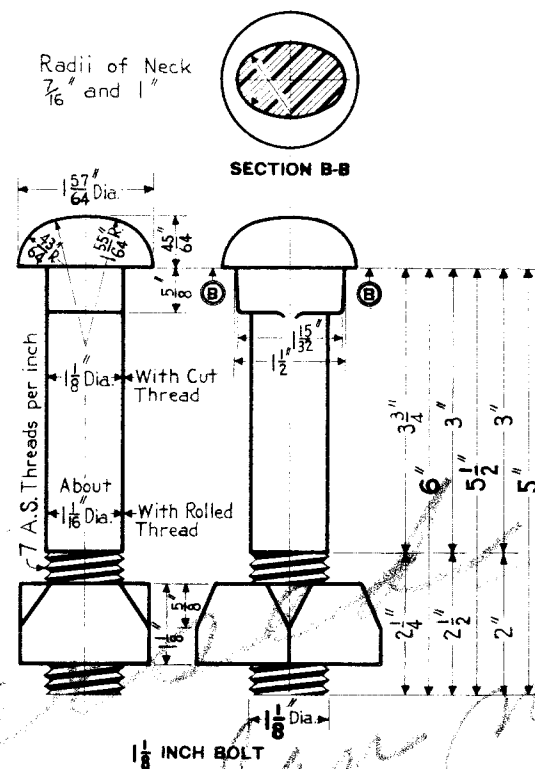
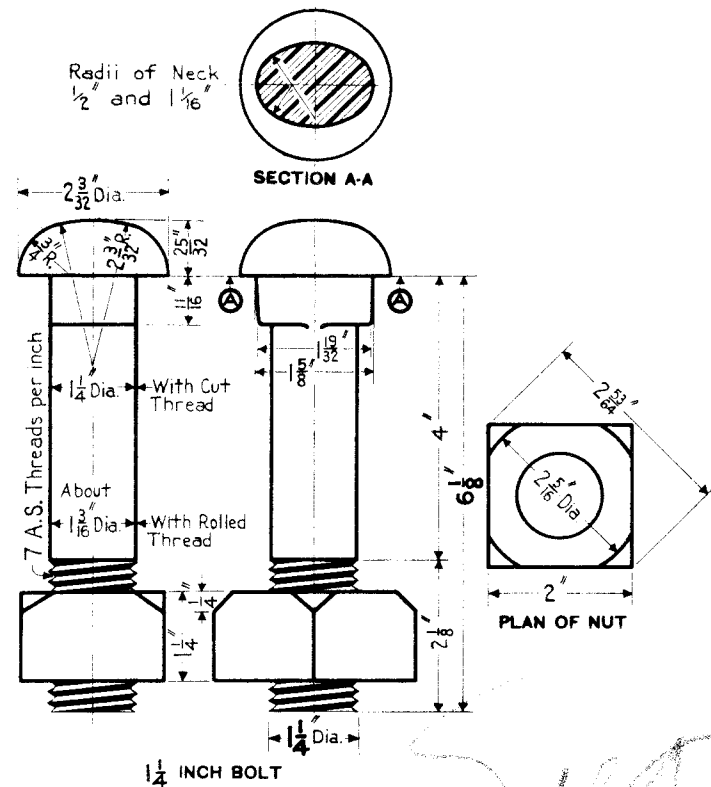


REV
SEP. 1923
MAR. 1926
JAN. 1928
DEC. 1939



NOTE:-

All Bolt and Nut material must conform to The Pennsylvania Railroad Company's Specifications for Quenched Carbon and Alloy Steel Track Bolts - basic number C. E. 9 ().

Requisition must state diameter and length of Bolt desired. Full thread must be provided for specified length of threaded portion and to end of prescribed length of bolt.

Shank and threads of bolts and threads of nuts must be thoroughly coated with a metal preservative approved by the Chief Engineer.

71500-E

THE PENNSYLVANIA RAILROAD
STANDARD
TRACK BOLTS AND NUTS
OFFICE OF CHIEF ENGINEER, PHILA., PA., FEBRUARY, 1921.

Correct *E. L. Lushington*
Engineer of Standards

Approved *R. H. Kellerman*
Chief Engineer