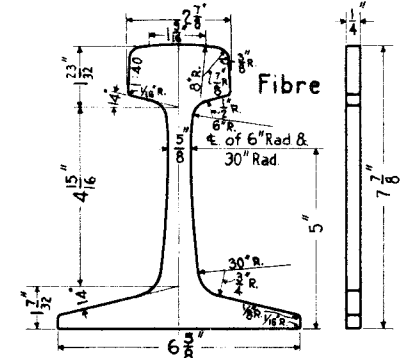
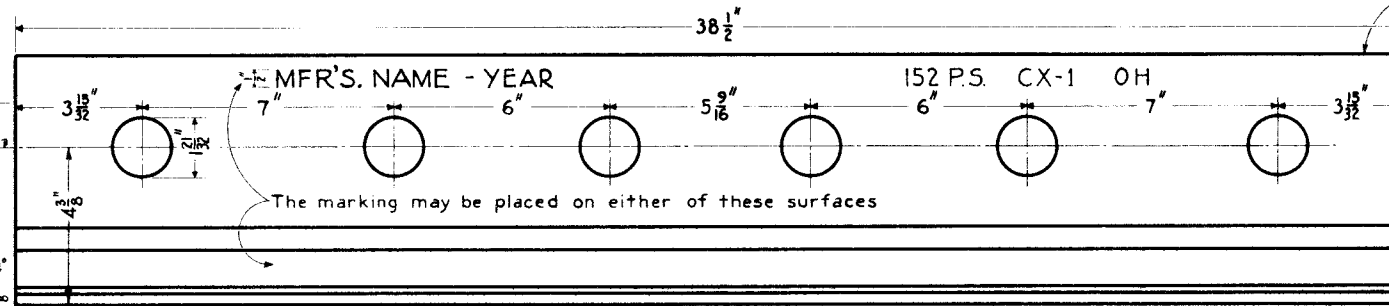
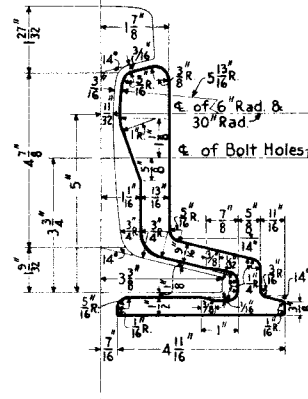


SIDE ELEVATION OF JOINT



END POST INSULATION



JOINT BAR

High Carbon Steel
Joint Bars

NOTE:-

All material shall be furnished in accordance with The Pennsylvania Railroad Company's current Specifications covering the respective parts.
Requisitions for repair parts must specify the name (as designated on this plan) of the part required, and the plan number.

NUMBER OF PIECES	DESCRIPTION
2	JOINT BARS
1	END POST INSULATION
2	HEAD INSULATIONS
2	BASE "
4	WASHER PLATE "
12	BUSHING "
4	WASHER PLATES
6	BOLTS AND NUTS
6	HELICAL SPRING WASHERS FOR 1/8" BOLTS.

as shown in detail on this plan.
as shown in detail of corresponding part on plan 71367 (basic no.)
Cont. Insulating Joint for 155 lbs. P.S. Rails Drilled 2 3/32 - 6 - 7.
as shown in detail of corresponding part on plan 71302 (basic no.)
Cont. Insulating Joint for 130 lbs. P.S. Rails Drilled 2 3/32 - 6 - 7.
as shown in detail of corresponding part on plan 71300 (basic no.)
Cont. Insulating Joint for 130 lbs. P.S. Rails Drilled 2 3/32 - 7 1/2.

71365-C



THE PENNSYLVANIA RAILROAD
STANDARD
CONTINUOUS INSULATING JOINT
FOR 152 LBS. P.S. RAILS
DRILLED 2 3/32 - 6 - 7

Approved

Lois Jones
Asst. Chief Engineer - Maintenance

OFFICE OF CHIEF ENGINEER, PHILA., PA., FEBRUARY, 1934

Approved

Thos. Sullivan
Chief Engineer