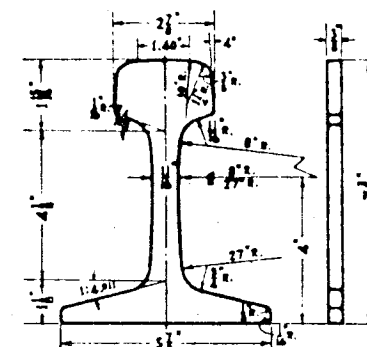
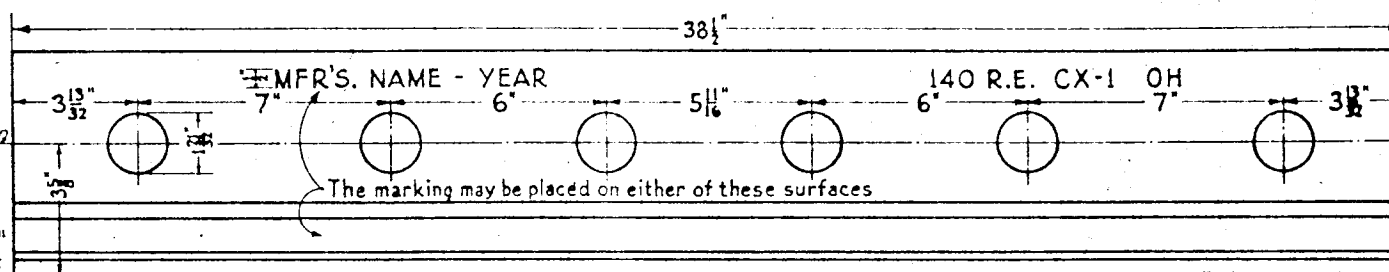
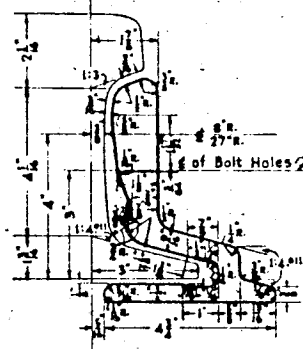


SIDE ELEVATION OF JOINT



END POST INSULATION
Fibre



JOINT BAR - High Carbon Steel

All material shall be furnished in accordance with The Pennsylvania Railroad current Specifications covering the respective parts.
Requisitions for repair parts must specify the name (as designated on this plan) of the part required and the plan number.

QUANTITY OF PIECES	BILL OF MATERIAL DESCRIPTION
2	JOINT BARS
1	END POST INSULATION
2	HEAD INSULATIONS
2	BASE "
4	WASHER PLATE "
12	BUSHING "
4	WASHER PLATES
6	BOLTS AND NUTS
6	HELICAL SPRING WASHERS FOR 1 1/2" BOLTS

- ▲ As shown in detail on this plan.
- As shown in detail of corresponding part on plan 71367-(-) Continuous Insulating Joint for 155 lbs. P.S. Rails, Drilled 2 1/2"-6-7.
- As shown in detail of corresponding part on plan 71302-(-) Continuous Insulating Joint for 130 lbs. P.S. Rails, Drilled 2 1/2"-6-7.
- As shown in detail of corresponding part on plan 71300-(-) Continuous Insulating Joint for 130 lbs. P.S. Rails, Drilled 2 1/2"-7 1/4.



71363-B

THE PENNSYLVANIA RAILROAD
STANDARD
CONTINUOUS INSULATING JOINT
FOR 140 LB. R.E. RAILS
DRILLED 2 1/2"-6-7

OFFICE OF CHIEF ENGINEER, PHILA., PA. - SEPT. 1956

J. R. Hunk
Chief Engineer