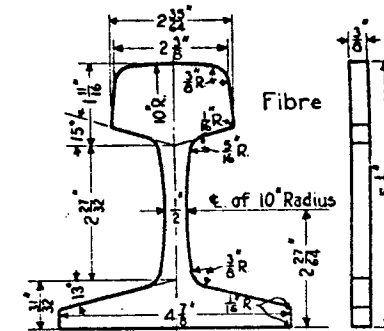
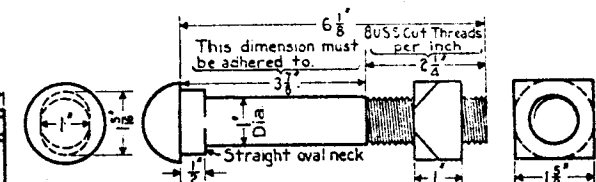


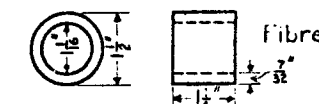
SIDE ELEVATION OF JOINT



END POST INSULATION



BOLT AND NUT
Bolt and Nut must conform to P.R.R. Spec's Basic No. C.E. 9 (1)



BUSHING INSULATION

NOTE:-
Requisitions for repair parts must specify the name (as designated on this plan) of the part required, and the plan number.

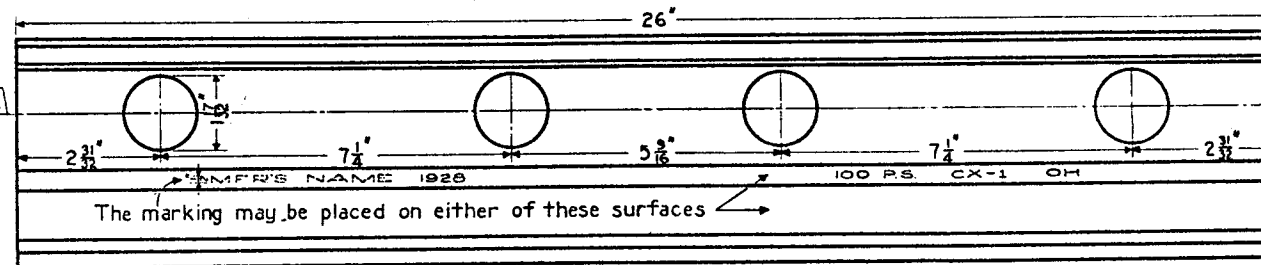
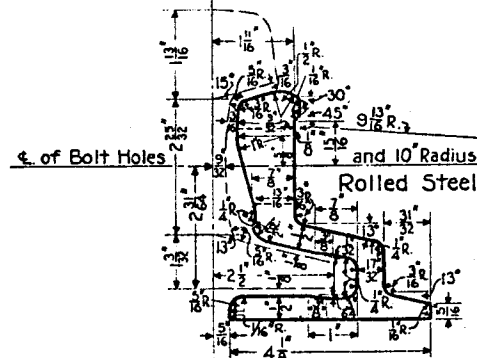
| NUMBER OF PIECES | BILL OF MATERIAL |
|---------------------|--|
| | DESCRIPTION |
| 2 | JOINT BARS |
| 1 | END POST INSULATION |
| 2 | HEAD INSULATIONS |
| 2 | BASE |
| 4 | WASHER PLATE |
| 8 | BUSHING |
| 4 | WASHER PLATES |
| 4 | BOLTS AND NUTS |
| 4 | HELICAL SPRING WASHERS FOR 1" BOLTS |

71320-B

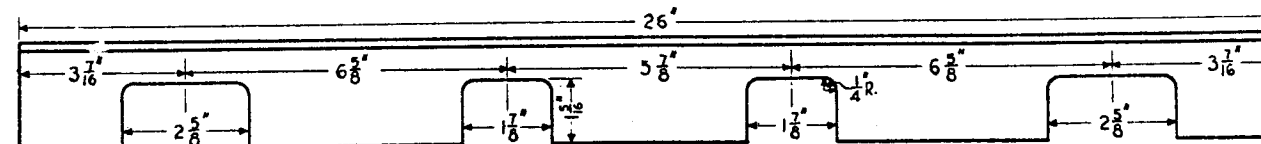


THE PENNSYLVANIA RAILROAD
STANDARD
CONTINUOUS INSULATING JOINT
FOR 100 LBS. P. S. RAILS
DRILLED 2 7/8" - 7/8"

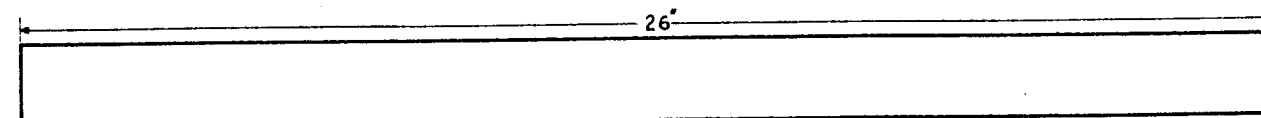
OFFICE OF CHIEF ENGINEER, PHILA., PA., MARCH, 1921.
Approved: *[Signature]* Chief Engineer
Corrected: *[Signature]* Engineer of Standards



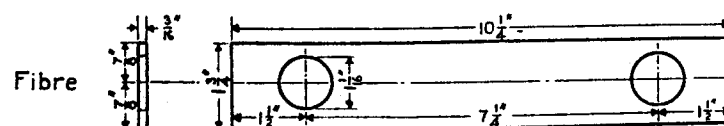
JOINT BAR



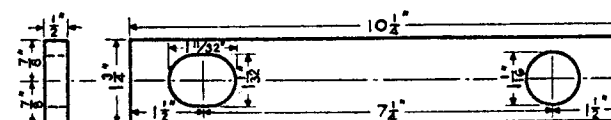
HEAD INSULATION



BASE INSULATION



WASHER PLATE INSULATION



WASHER PLATE

Rolled
Steel