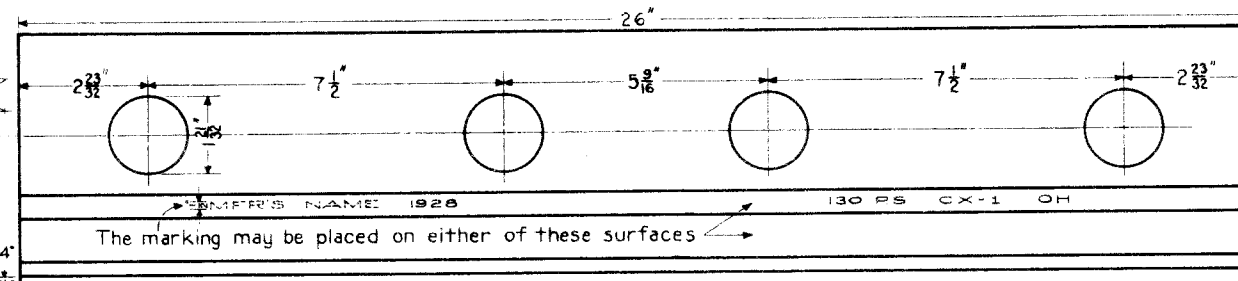
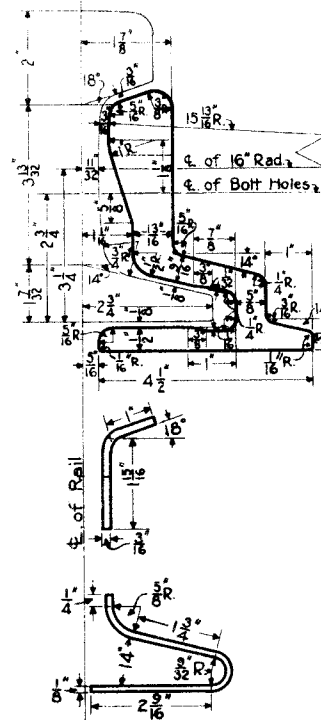
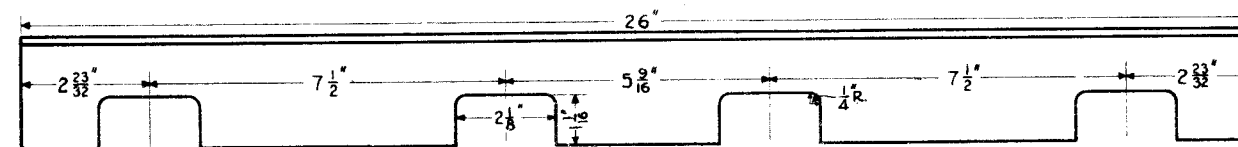


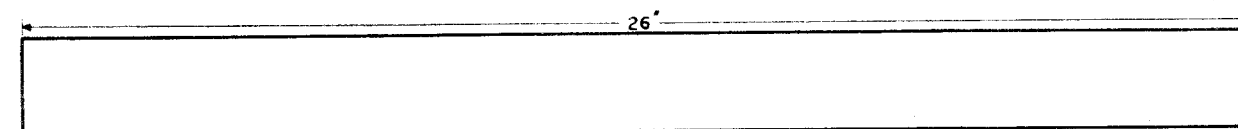
SIDE ELEVATION OF JOINT



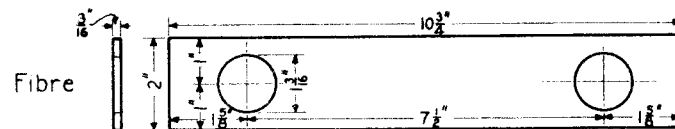
JOINT BAR



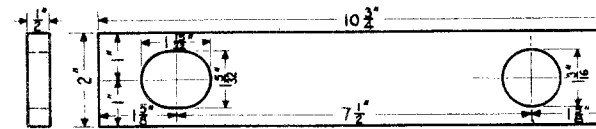
HEAD INSULATION



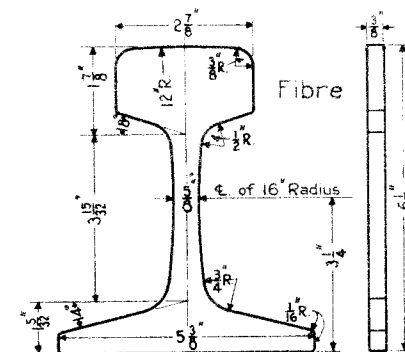
BASE INSULATION



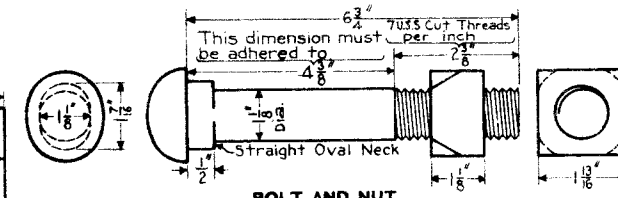
WASHER PLATE INSULATION



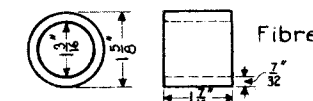
WASHER PLATE



END POST INSULATION



BOLT AND NUT



BUSHING INSULATION

NOTE:
All material shall be furnished in accordance with The Pennsylvania Railroad Company's current Specifications covering the respective parts.
Requisitions for repair parts must specify the name (as designated on this plan) of the part required, and the plan number.

NUMBER OF PIECES	BILL OF MATERIAL DESCRIPTION
2	JOINT BARS
1	END POST INSULATION
2	HEAD INSULATIONS
2	BASE "
4	WASHER PLATE "
8	BUSHING "
4	WASHER PLATES
4	BOLTS AND NUTS
4	HELICAL SPRING WASHERS FOR 1 7/8" BOLTS.

71300-C



THE PENNSYLVANIA RAILROAD
STANDARD
CONTINUOUS INSULATING JOINT
FOR 130 LBS. P. S. RAILS
DRILLED 2 1/2" - 7 1/2"

Office of Chief Engineer, PHILA., PA., FEBRUARY, 1921
Approved
Chief Engineer

Approved
Chief Engineer