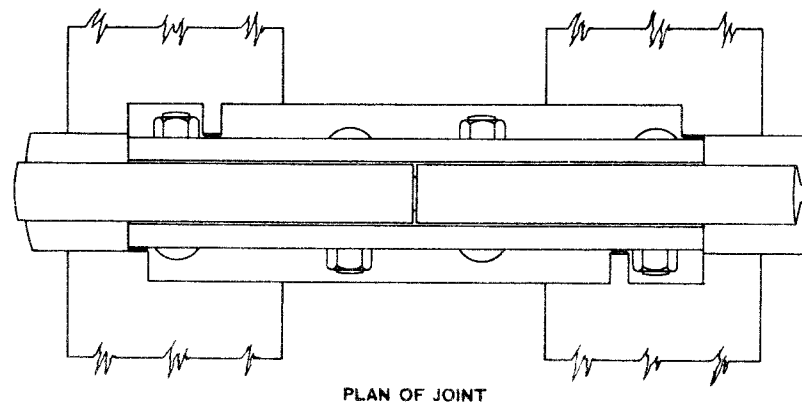


NOTE:-

All material must conform to Pennsylvania System Specifications for Quenched Carbon and Alloy Steel Joint Bars.

Joint Bars must be marked to indicate manufacturer's name, year of manufacture, weight and section of rail, and type of joint bar.

Letters and figures must be raised 1/16 inch.



MATHEMATICAL PROPERTIES	
TWO BARS	
Moment of Inertia	14.74
Section Modulus above N.A.	6.67
" " below N.A.	7.68
Weight per inch of 2 Bars (lbs.)	2.76
Joint Stiffness	35.19 %
Area	9.74 sq. in.
Estimated Weight of 2 Bars (lbs.)	64

PENNSYLVANIA SYSTEM

STANDARD

100 P.S. L-2 JOINT BAR

PUNCHED 7 1/8 - 5 1/2 - 7 1/4

OFFICE OF CHIEF ENGINEER, PHILA. PA., MARCH, 1922.

Corres

Engineer of Standards

Approved

Chief Engineer