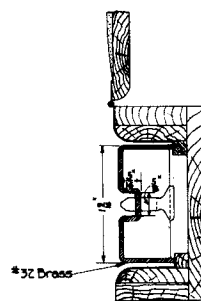


V-cuts for locating Track Gauge

No. 30 Machine Screws 1' long.

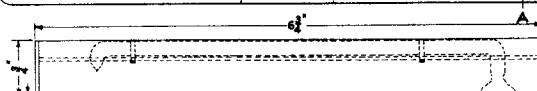


**NOTE:** All Test Templates, Thermometers and Shims must have manufacturers name stamped plainly in the metal.



**SECTION A-A**

NOTE:-  
Box to be lined on both sides  
and ends with felt and lid padded  
Brass hinges and nicked catch  
to be used.



### TRACK THERMOMETER AND CASE

DRAWN BY C. J. F.  
CHECKED BY J. B. H.

**P. R. R. STANDARD  
TRACK GAUGE TEST TEMPLAT,  
TRACK THERMOMETER  
AND TRACK SHIMS**

NOVEMBER, 1912.

REVISED:-  
NOV. 1914

Correct                       
ENGINEER M. W.

Approved *J. J. Richards*  
CHIEF ENGINEER M. W.

Approved   
GENERAL MANAGER