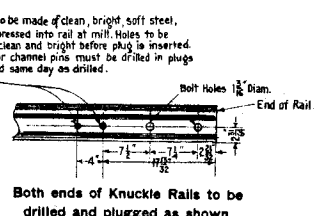
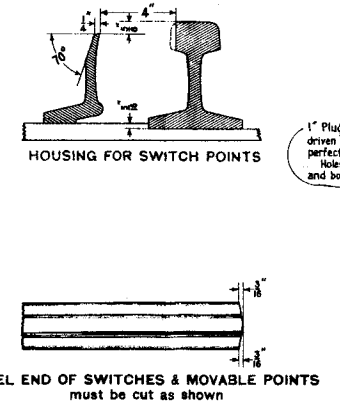
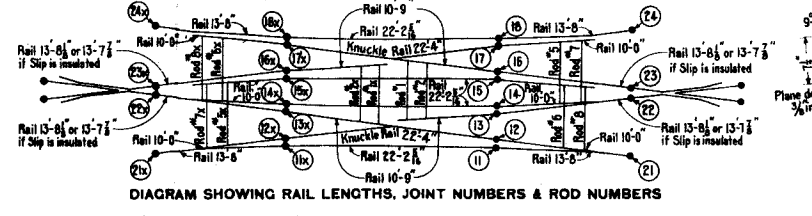
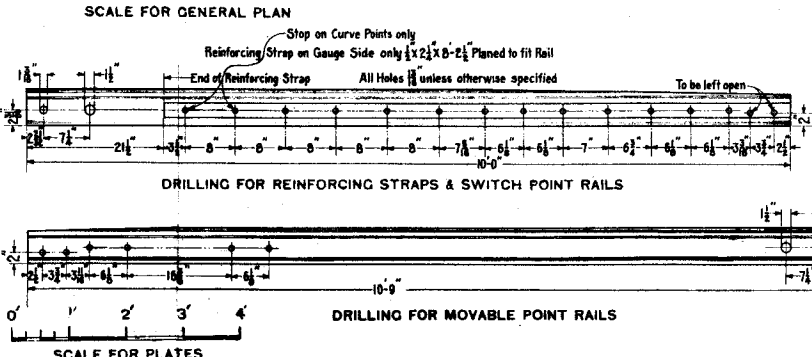
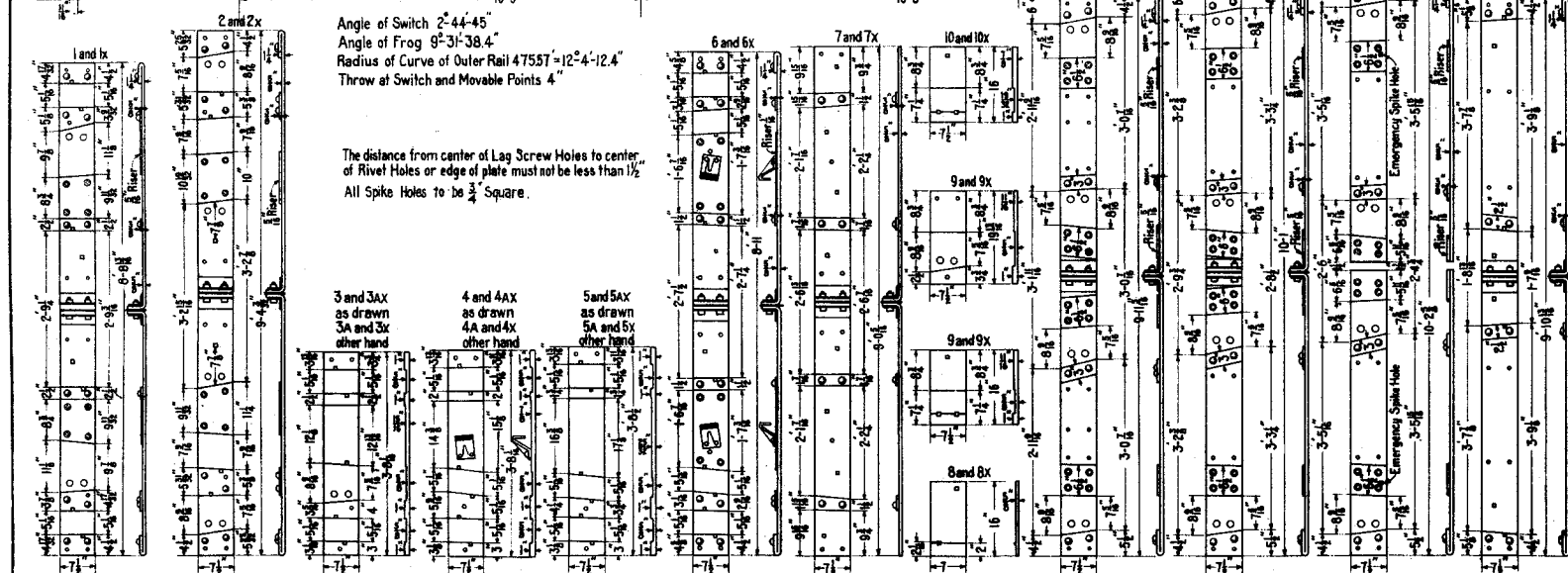


BILL OF MATERIAL	
NO. OF PIECES	DESCRIPTION
2	NO. 6 HARD CENTER STIFF FROGS
2	ROLLED MANGANESE OR MANGANESE KNUCKLE RAILS (With Easer Rail Filler, Bolts and Nut Locks Complete)
4	MOVABLE POINT RAILS (With Sockets and Bolts Complete)
8	SWITCH POINT RAIL S (With Sockets and Bolts Complete)
12	CONNECTING RAILS
52	SWITCH PLATES (Complete)
8	HEEL BLOCKS (With Splices Bolts and Pipe Collar Complete)
44	ADJUSTABLE BRACES (With Bolts, Double Nuts and Malleable Washers Complete)
12	RODS (Complete)
280	LAG SCREWS
4	SPECIAL GUARD RAILS (With Foot Guards)
24	SPLICE BARS (With Bolts and Nut Locks Complete)
28	TIE PLATES
28	CLAMPS, BRACES AND TIE PLATES FOR 4 GUARD RAILS

NOTE:
 All Steel Rails to conform to P. R. R. Specifications. Requisition must specify whether slip is to be insulated or non-insulated.
 If slip is insulated manufacturer must furnish four (4) 1/2 inch steel end posts, one of which must be used at each joint at the toe of frogs where insulated joints do not occur. If slip is non-insulated all bridle plates and rods must be furnished solid.
 Plates for one half of slip to be marked to correspond with numbers shown on ties 1, 2, 3, etc. and the other half, 1X, 2X, 3X, etc. and when two plates occur on one tie they are to be marked 3 and 3A, 4 and 4A, etc. or 3X and 3AX, 4X and 4AX, etc. When four plates occur on one tie all four plates are to be marked with the number shown on tie. Marks must be placed on one end of plate only with steel stamp and in position as shown on plan.
 Heel Blocks, Splices, Anti-Creeping Straps and Rail Ends must be marked with steel stamp with joint number as shown on diagram.
 Rods must be marked with steel stamp with Rod number as shown on diagram.
 If more than one slip is ordered at the same time all Plates, Heel Blocks, Splices, Anti-Creeping Straps, Rails and Rods must be marked with steel stamp, SA, SB, SC, for 1st, 2nd, 3rd, slips etc.
 For Rods, Sockets, Stop for Movable Points, Basket, Adjustable Rail Braces, Double Nut, Insulated Joint for Bridle Plates, Lag Screws and Splices see Standard Plans covering those Details.
 Risers and shoulders on bridle plates must be welded and riveted, or plates may be planed out from 1" stock.



61500
P. R. R. STANDARD
NO. 6 MOVABLE POINT DOUBLE
SLIP CROSSING
 FOR P. S. 100 LBS. RAILS
 APRIL 1913

Correct *[Signature]* ENGINEER M. W.
 Approved *[Signature]* CHIEF ENGINEER M. W.
 Approved *[Signature]* GENERAL MANAGER

Latest copy