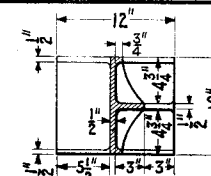
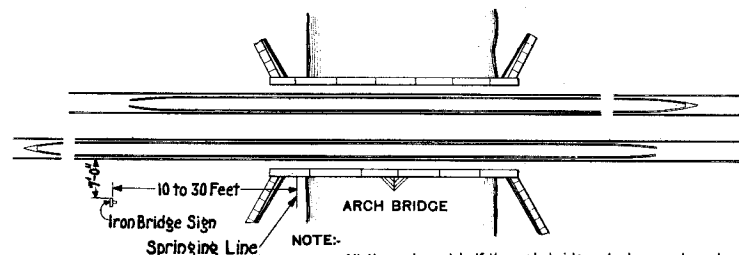
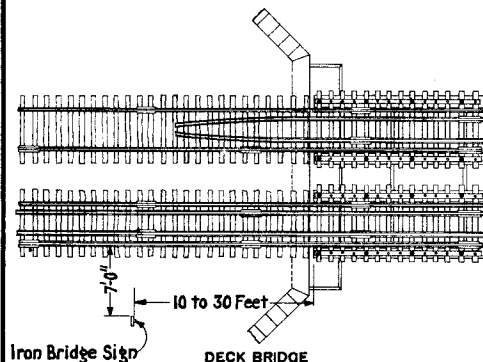
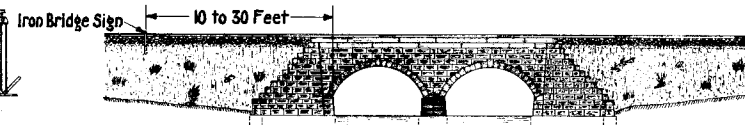
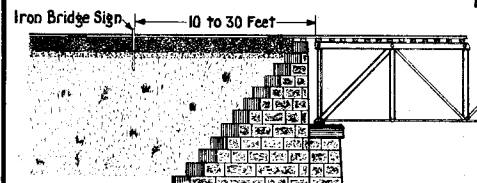


Numbers on through and half through bridges to be painted white on a black ground.



SECTION A-A



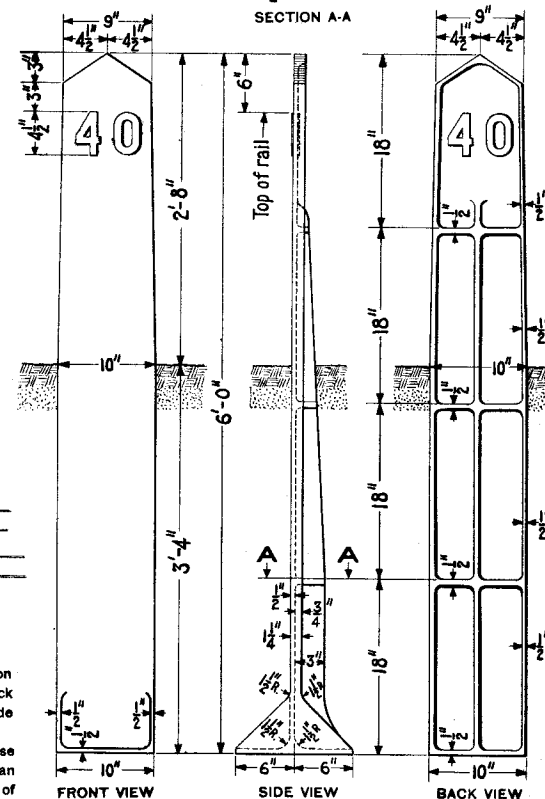
NOTE:-

All through and half through bridges to be numbered on both sides at both ends of the bridge, except single track bridges where one number at each end on the right hand side will be sufficient.

For single and double track bridges when necessary to use Iron Bridge Sign, one sign is sufficient for bridges less than 100 feet in length. For single and double track bridges of 100 feet in length or more and for all bridges carrying more than two tracks, two bridge signs should be used.

Iron Bridge Sign to be painted black with white figures raised 1/8 inch from face.

For proportions of figures see Standard Plan No. 60145



FRONT VIEW

SIDE VIEW

BACK VIEW

IRON BRIDGE SIGN



60203

P. R. R. STANDARD METHOD OF NUMBERING BRIDGES APRIL, 1911.

Approved

Joseph S. Richards
CHIEF ENGINEER M. W.

Approved

J. C. Long
GENERAL MANAGER

DRAWN BY E.A.
CHECKED BY J.C.K.

HALF THROUGH BRIDGE