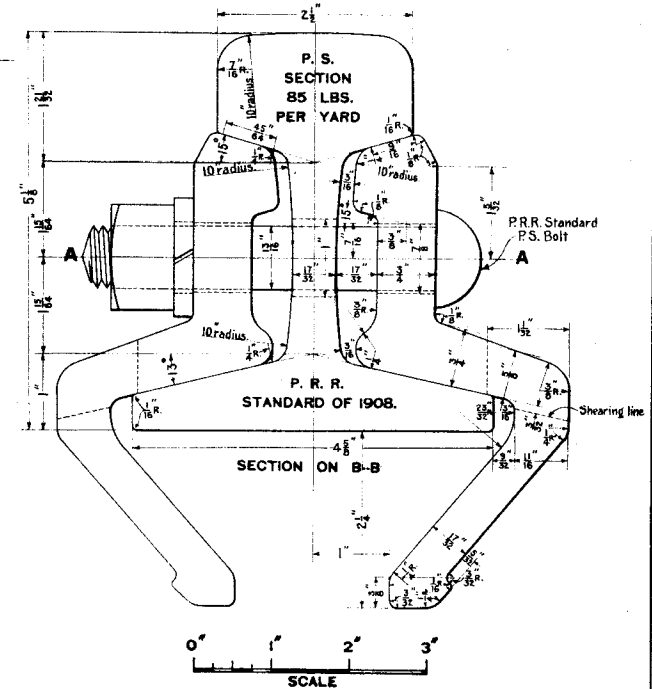


DRILLING FOR 85 LBS. RAIL

NOTE:- Bolt holes in 85 lbs. rails are to be drilled 1 in. in diameter.

Splices to be marked with manufacturer's name, number of splice and year of manufacture.

Letters and figures to be raised 1/8 inch. All rails to conform to Penna. Railroad Specifications for Steel Rails.



59855
P. R. R. STANDARD
P. S. NO 6A FOUR HOLE SPLICE
FOR
85 LBS. RAIL
JUNE 1911

DRAWN BY *asb*
 CHECKED BY *asb*

Correct

Joseph J. Richards
 ENGINEER M. W.

Approved

Joseph J. Richards
 CHIEF ENGINEER M. W.

Approved

John C. Long
 GENERAL MANAGER