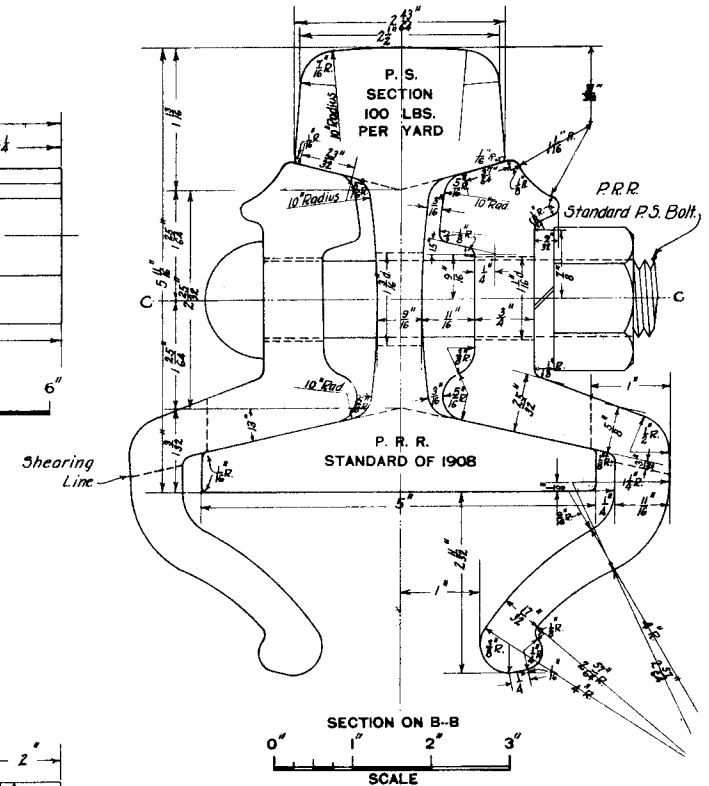
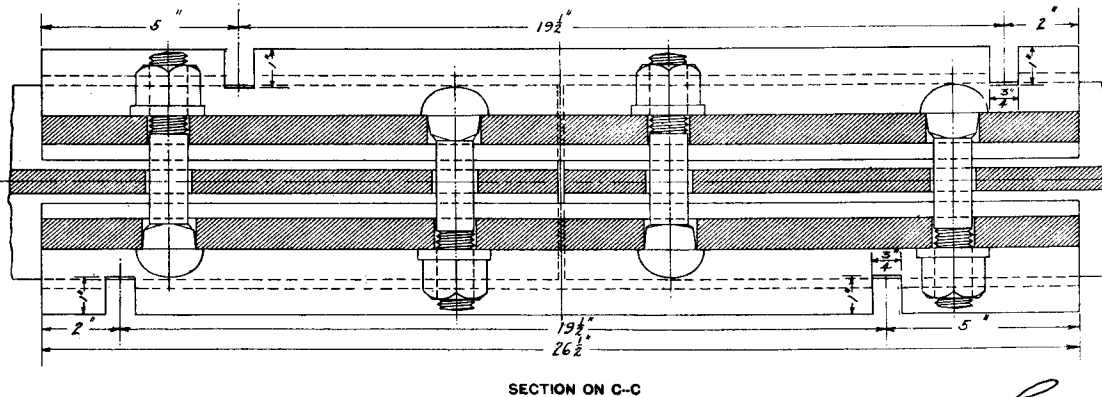


Note:- Bolt holes in 100 lbs rails are to be drilled 1 1/2 in. in diameter.

Splices to be marked with manufacturer's name, number of splice and year of manufacture.

Letters and figures to be raised 1/4 inch.

All rails to conform to Pennsylvania Railroad Specifications for Steel Rails.



59483
P. R. R. STANDARD
P.S. N^o 8^c FOUR HOLE SPLICE
FOR
100 LBS. RAIL
JUNE, 1911.

DRAWN BY R.T.F.
CHECKED BY W.F.

Correct *J. L. Young*
ENGINEER M. W.

Approved Joe J. Richards
CHIEF ENGINEER M. W.

Approved _____
W. _____
GENERAL MANAGER