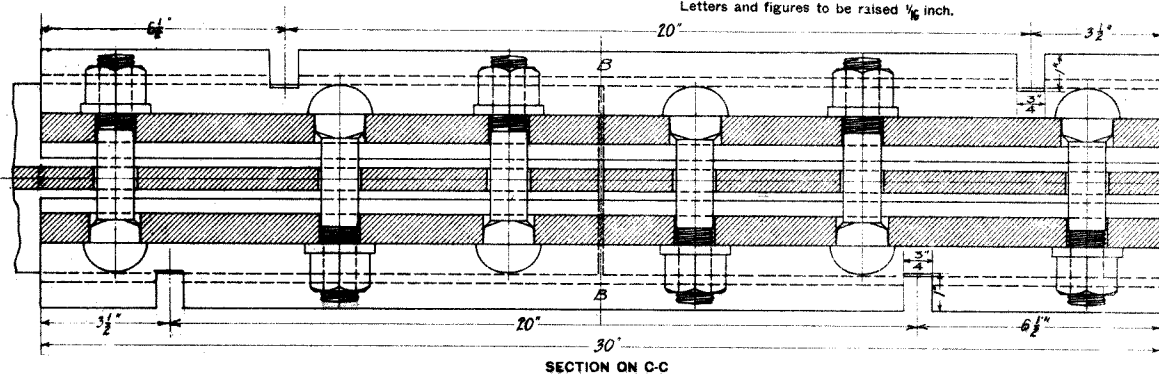
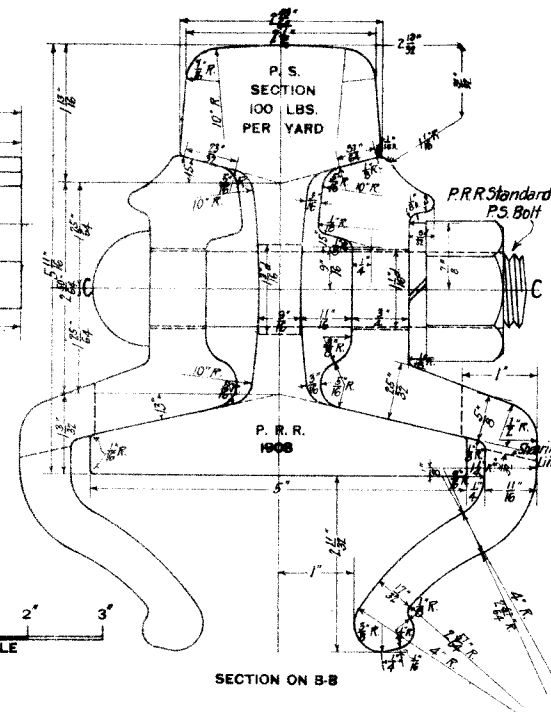


Note: Bolt holes in 100 lbs. rails are to be drilled 1 1/8 in. in diameter.
Splices to be marked with manufacturer's name, number of splice and year of manufacture.
Letters and figures to be raised 1/8 inch.



59475
P. R. R. STANDARD
P. S. N° 8 C SIX HOLE SPLICE
FOR
100 LBS. RAIL
MARCH, 1908

REVISED JUNE 1908.
DEC. 1908

DRAWN BY *K.L.M.*
CHECKED BY *K.L.M.*

Correct *[Signature]*
ENGINEER M. W.

Approved *[Signature]*
CHIEF ENGINEER M. W.

Approved *[Signature]*
GENERAL MANAGER