

NOTE:-

For proportions of letters see Standard Plan 60146

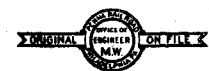
NOTE:- Signs for important stations, buildings and shelters, to be of cast iron; letters and border covered with gold leaf, laid on Yellow Paint; background painted with Mars Red Medium.

Signs for other stations may be of wood; or painted on the building or shelter, letters and border painted with a mixture of white lead and French Yellow Ochre to give gold yellow color, background painted with Mars Red Medium.

To insure uniformity of color, Mars Red Medium Paint is to be obtained from Altoona Shops.

Back, edges and lugs to be painted black. Platform stations without buildings or shelters to be equipped with Approach Sign only.

For Approach Sign see plan 58756.



58755

P. R. R. STANDARD

STATION SIGN

MARCH, 1906.

REVISED NOV. 1907.

" APR. 1909.

" AUG. 1911.

Correct

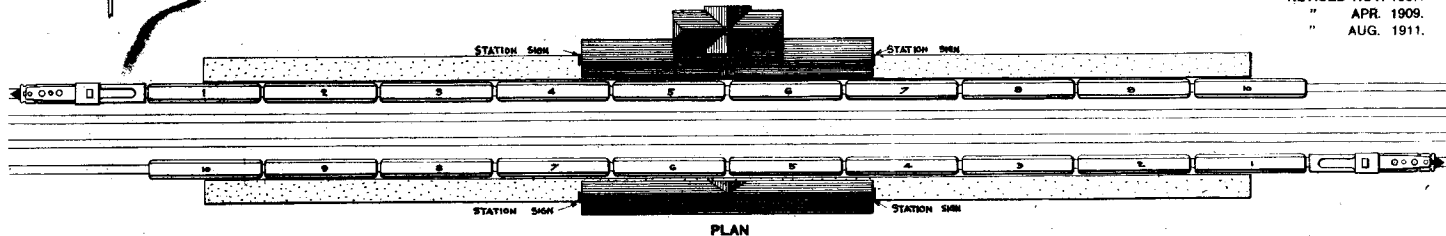
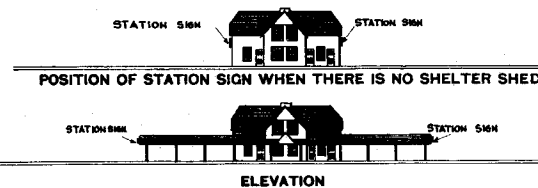
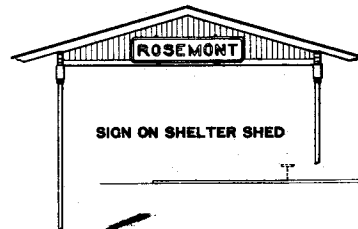
ENGINEER M. W.

Approved

CHIEF ENGINEER M. W.

Approved

GENERAL MANAGER

DRAWN BY: K.H.B.
CHECKED BY: Q.T.