

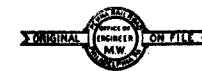
NOTE:- Signs for important stations, buildings and shelters, to be of cast iron; letters and border covered with gold leaf, laid on Yellow Paint; background painted with Mars Red Medium.

Back, edges and lugs to be painted black.
Platform stations without buildings or
shelters to be equipped with Approach
Sign only.

For Approach Sign see plan 58756.

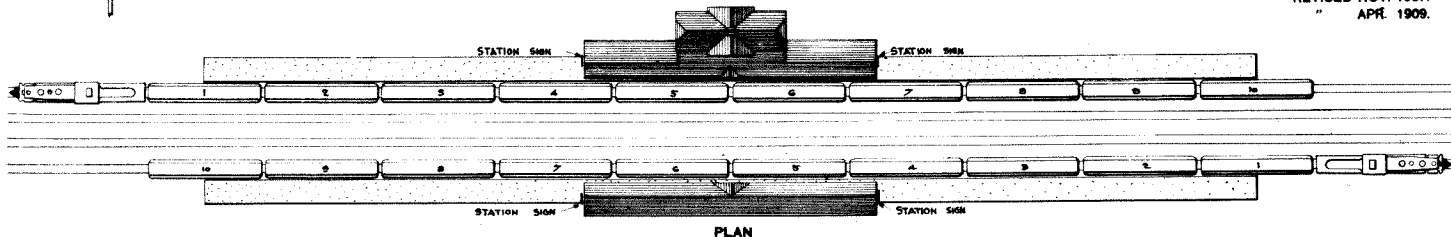
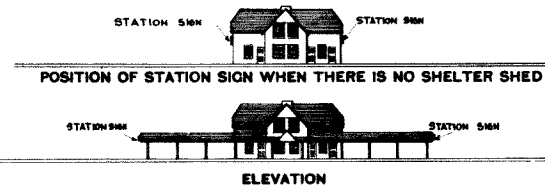
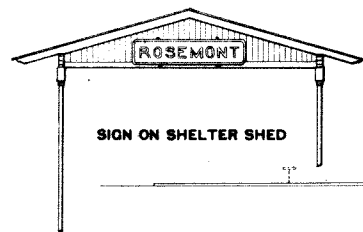
Signs for other stations may be of wood; letters and border painted with a mixture of white lead and French Yellow Ochre to give gold yellow color; background painted with Mars Red Medium.

To insure uniformity of color, Mars Red Medium Paint is to be obtained from Altoona Shops.



58755
P. R. R. STANDARD
STATION SIGN
MARCH, 1908.

REVISED NOV. 1907.
" APR. 1909.



DRAWN BY X.H.D.
CHECKED BY R.J.F.

Correct L. J. ...
ENGINEER M. W.

Approved Joseph J. ...
CHIEF ENGINEER M. W.

Approved W. W. ...
GENERAL MANAGER