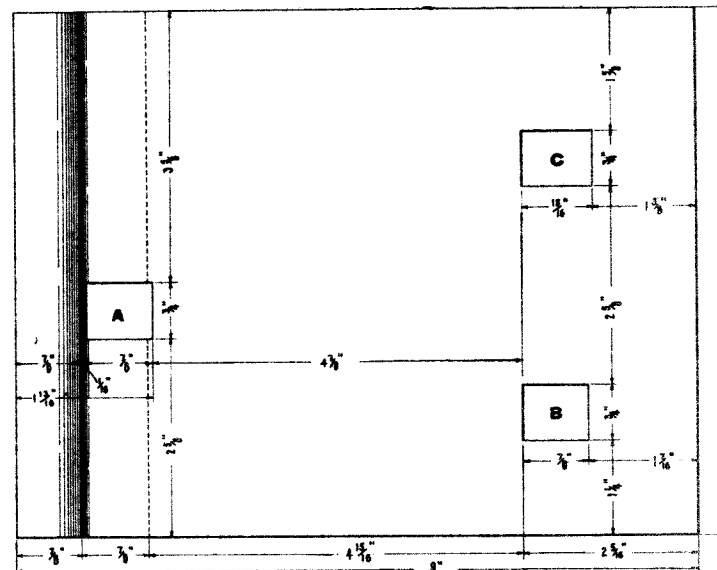
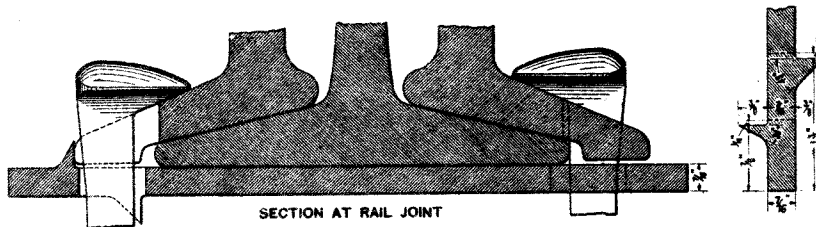


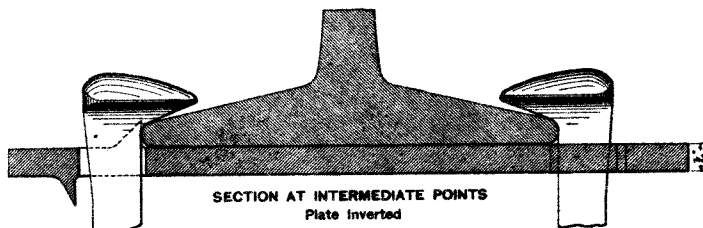
PUNCHING FOR 100 LB. TIE PLATE



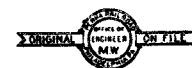
PUNCHING FOR 85 LB. TIE PLATE



SECTION AT RAIL JOINT

SECTION AT INTERMEDIATE POINTS
Plate Inverted

Note :-
Always spike at A and C.
Spike at B only on high side
of curves where thrust on
rail is difficult to hold.



58036
P. R. R. STANDARD
COMBINATION TIE PLATE
FOR
85 LBS. & 100 LBS. RAILS

JUNE 24, 1904



REVISED MCH., 1905
" MAY, 1906
" MCH., 1906
" DEC., 1906
" AUG., 1907

Correct

ENGINEER M. W.

Approved

John J. Richards
CHIEF ENGINEER M. W.

Approved

W. A. Atkinson
GENERAL MANAGER

DRAWN BY *A.C.C.*
CHECKED BY *W.D.*