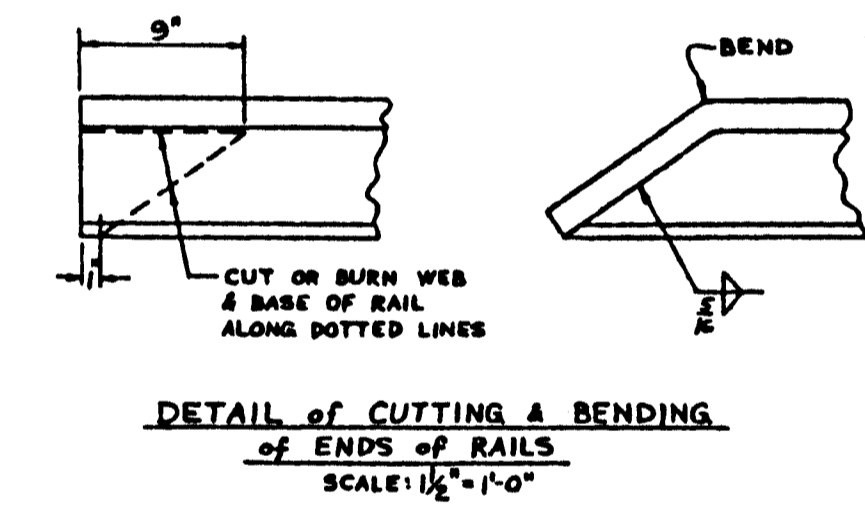
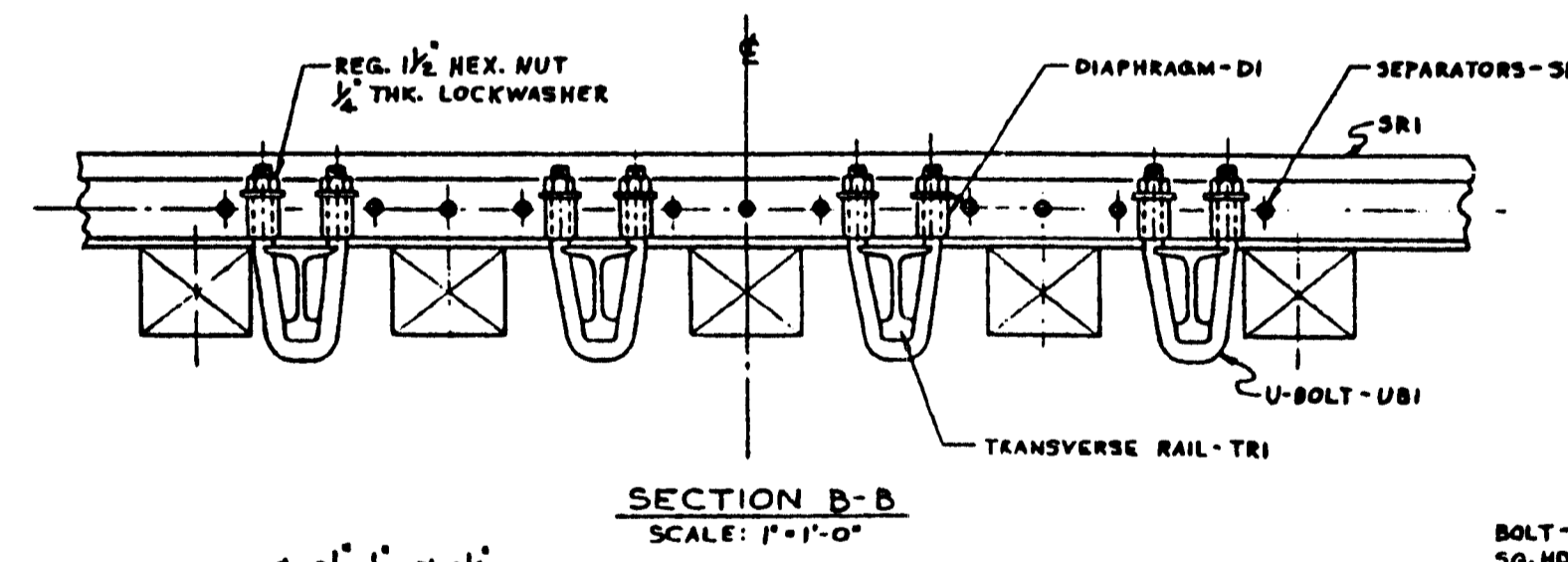
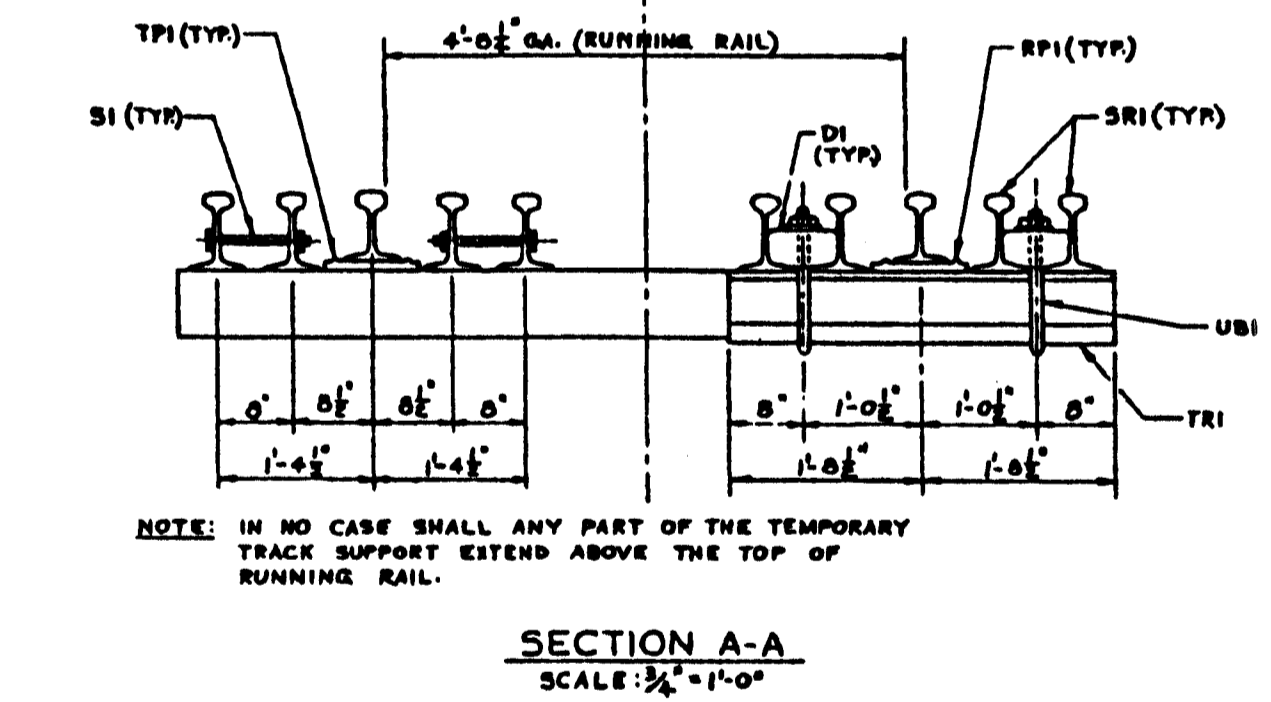
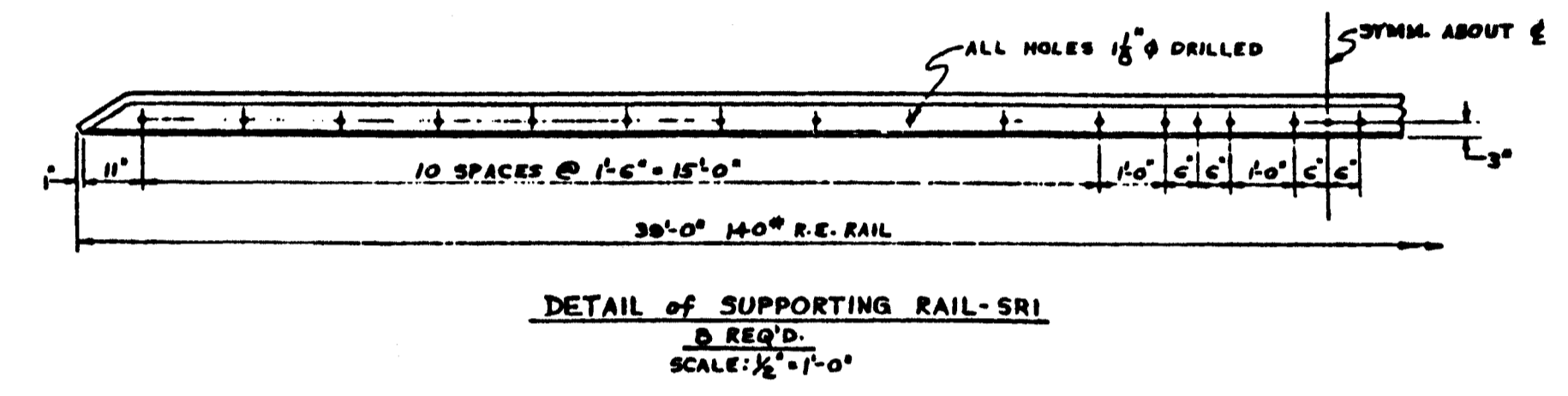
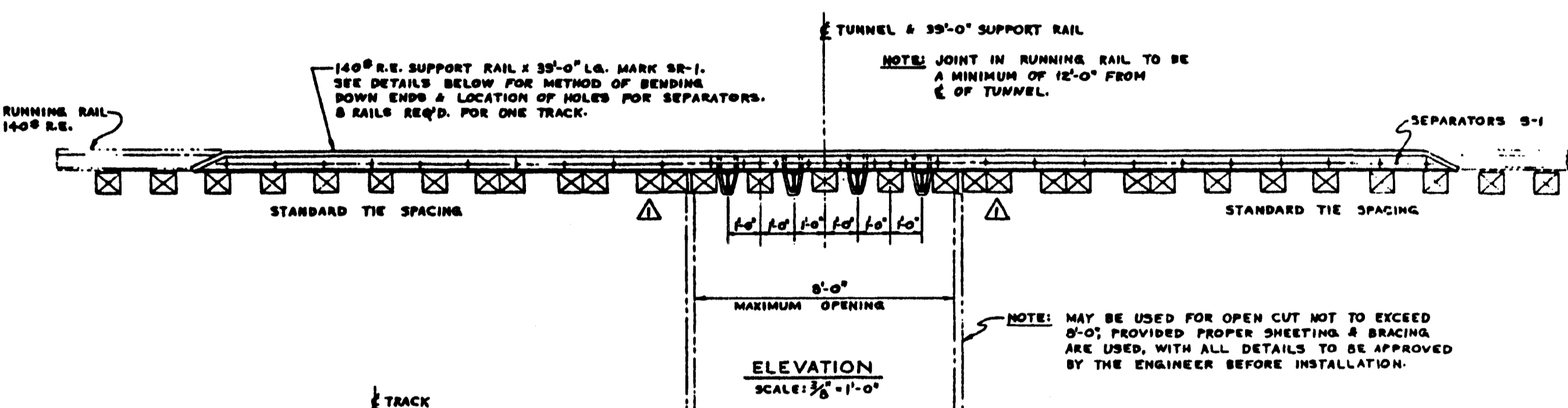
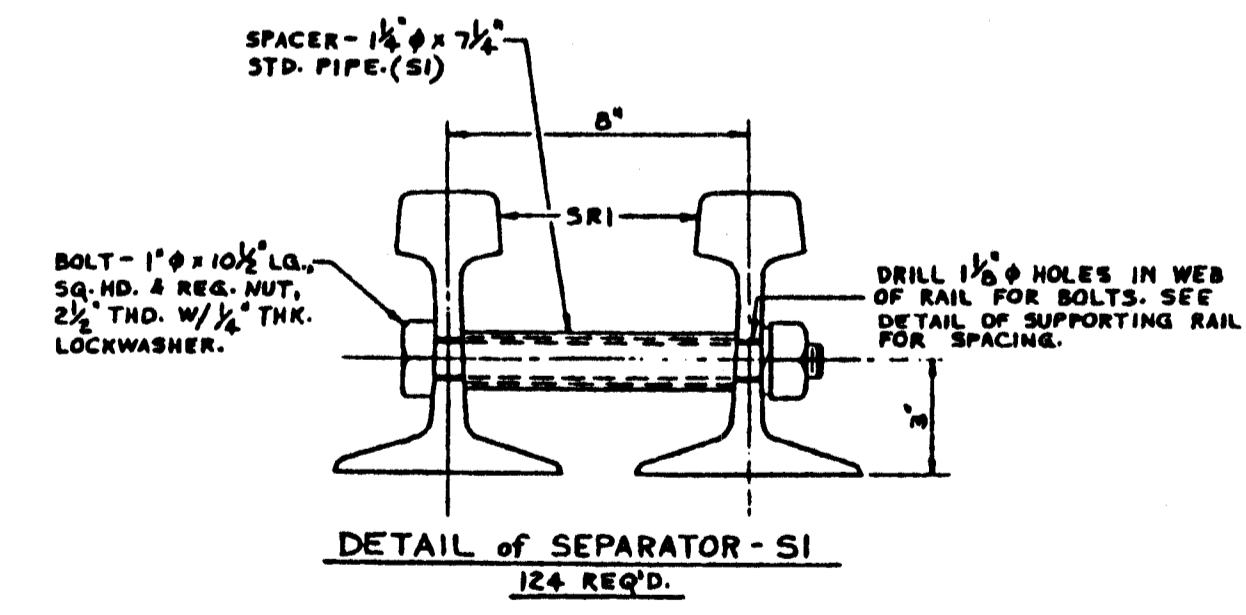
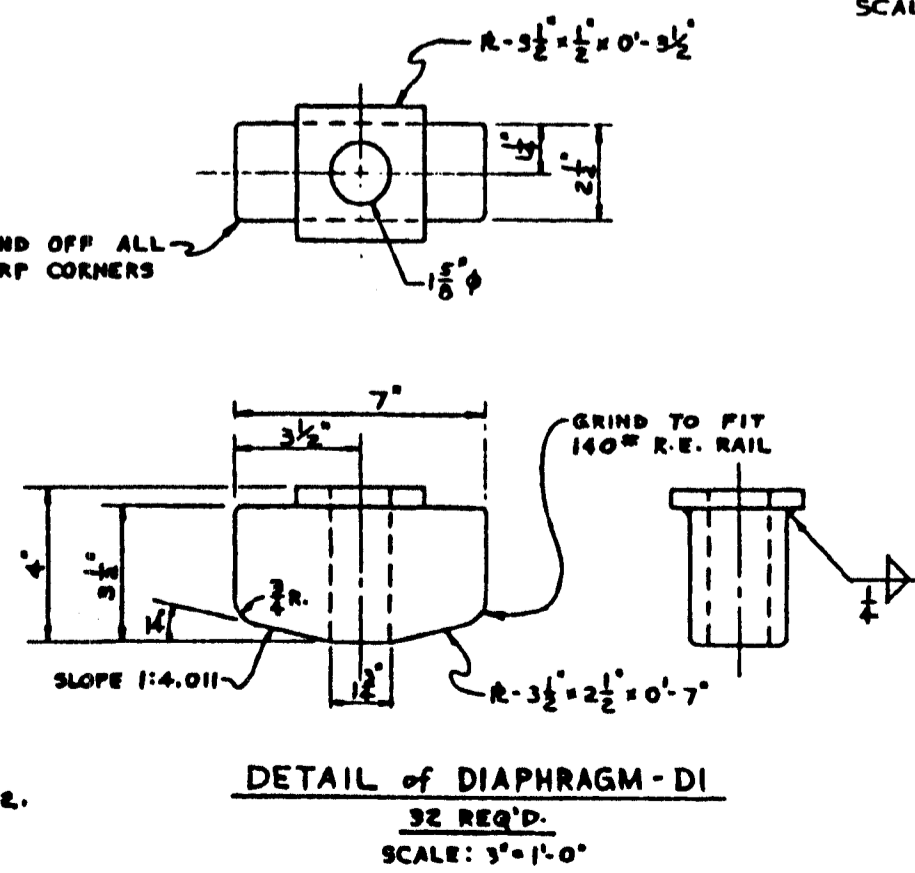
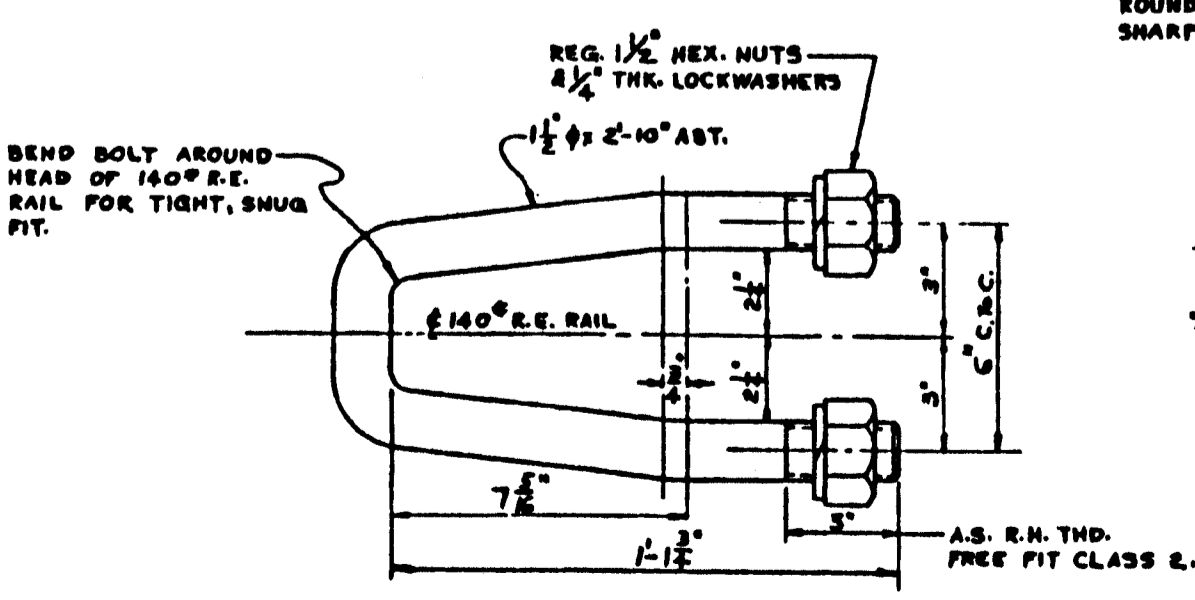


**RAIL PLATE - RPI - 8 REQ'D. - OVER TRI**  
**TIE PLATE - TPI - 46 REQ'D. - OVER TIES UNDER RUNNING RAILS.**  
SCALE:  $3'' = 1'-0''$



**GENERAL NOTES**

- GENERAL SPECIFICATIONS AS PER A.R.E.A. SPECS.
- STRUCTURAL STEEL AS PER ASTM SPECS. A-36.
- WELDING TO BE IN ACCORDANCE WITH AMERICAN WELDING SOCIETY SPECS. FOR WELDED RAILWAY BRIDGES D2.0-69. ALL WELDS TO BE CONTINUOUS UNLESS OTHERWISE SHOWN. ALL WELDERS TO BE QUALIFIED IN ACCORDANCE WITH R.R. LETTER OF GENERAL PRACTICE No. 312C, OR OTHER REGULATIONS MEETING WITH THE APPROVAL OF THE ENGINEER.
- RUNNING RAILS MUST BE 140# R.E. MINIMUM.
- WHEN INSTALLING THESE TEMPORARY TRACK SUPPORTS IN TRACK THAT HAS CONTINUOUS WELDED RAIL (CWR), THE FOLLOWING PROCEDURE MUST BE FOLLOWED:
  - CUT AND REMOVE SEVEN STANDARD RAIL LENGTHS (APPROX. 273 FT.) OF CWR.
  - INSTALL SEVEN STANDARD RAILS WITH JOINT BARS AND PROPER EXPANSION GAPS.
  - INSTALL TEMPORARY TRACK SUPPORTS.
  - UPON COMPLETION OF THE UNDERTRACK CONSTRUCTION AND REMOVAL OF THE TEMPORARY TRACK SUPPORTS, THE TRACK SHALL BE OBSERVED AND PROPERLY TAMPED FOR AT LEAST THREE MONTHS UNTIL STABILITY OF THE ROADBED IS ASSURED.
  - AFTER THIS PERIOD, RE-INSTALL THE CWR, FIELD BUTT WELDING THE JOINTS IN ACCORDANCE WITH APPROVED PROCEDURES AND CURRENT SPECIFICATIONS M.W.1.



MATERIAL REQUIRED FOR ONE TRACK					
QUAN.	PART NO.	NO. OF PIECES	DESCRIPTION	LENGTH	REMARKS
				FT. IN.	
32	DI	32	R - $3\frac{1}{2}'' \times \frac{1}{2}''$	0	$3\frac{1}{2}''$
		32	R - $3\frac{1}{2}'' \times 2\frac{1}{2}''$	0	SHAPE TO SUIT
16	UBI	16	$1\frac{1}{2}''$ $\phi$ ROD	2	10' ABT. THD. & BEND TO SUIT
32		32	$1\frac{1}{2}''$ REG. HEX NUTS		
		32	$\frac{1}{4}''$ THK. LOCKWASHERS		
124	SI	124	1" REG. SQ. HD. BOLT	0	$10\frac{1}{2}''$
		124	$1\frac{1}{2}''$ STD. PIPE	0	$7\frac{1}{2}''$
		124	1" REG. SQ. NUT		
		124	$\frac{1}{4}''$ THK. LOCKWASHER		
46	TPI		STD. TIE PLATES FOR 140# R.E. RAIL		
8	RPI				
8	SRI		140# R.E. RAIL	33	0 CUT & DRILL TO SUIT
8	TRI			3	5" DRILL TO SUIT

**140# R.E. SUPPORTING RAILS**

**PENN CENTRAL TRANSPORTATION COMPANY**  
**TEMPORARY TRACK SUPPORT**  
FOR SUPPORT OF TRACKS WHEN TUNNELING OR DRIVING PIPE

OFFICE OF CHIEF ENGINEER  
APPROVED: *[Signature]*  
PHILADELPHIA, PENNA.  
DATE: 8-21-70  
43380-RI

DES	
DR	A.D.L.
CH	E.H.
TR	

600 - Six Penn Center  
Philadelphia, Pa.  
August 24, 1971

Subject: Temporary Track Supports.

TO: AREA ENGINEERS

ENGINEERS M. W.

DIVISION ENGINEERS

Enclosed are five (5) copies of Plan 13380-111, revised July 23, 1971, entitled "Temporary Track Support for Support of Tracks When Tunneling or Driving Pipe".

The revision to this plan is the addition of General Note No. 5; which specifies the procedures to be followed when these temporary track supports are to be installed in track that has continuous welded rail (CWR).

Additional copies of this plan are available on request to this office.



C. E. Defendorf  
Chief Engineer

GED

Encl.

cc: C. T. Popma - With copy of plan.  
B. J. Gordon (10) - With copy of plan.  
J. C. Hughes - With copy of plan.

-----  
Baltimore, Md., August 31, 1971

C. A. Lee	
R. J. McHugh	
D. S. Blair	J. E. Blake
K. C. DeLong	W. A. Johnson
D. W. DiFalco	A. H. Haynie

Plan attached for your information.

J. R. Royer