

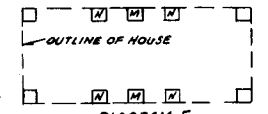
B.C. Overholt
Pittsburgh, Pa.

GENERAL SPECIFICATIONS.

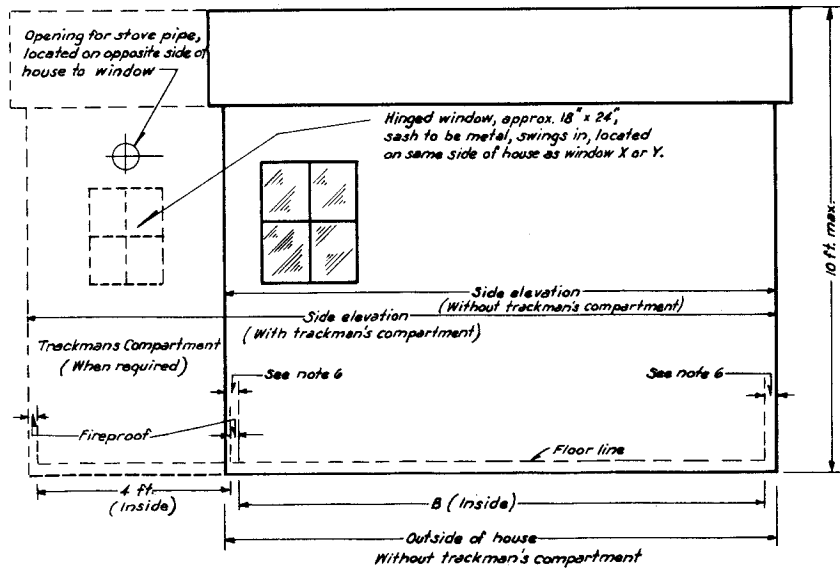
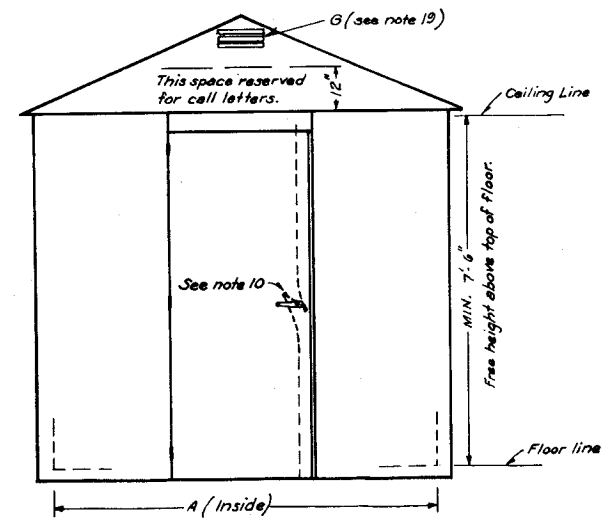
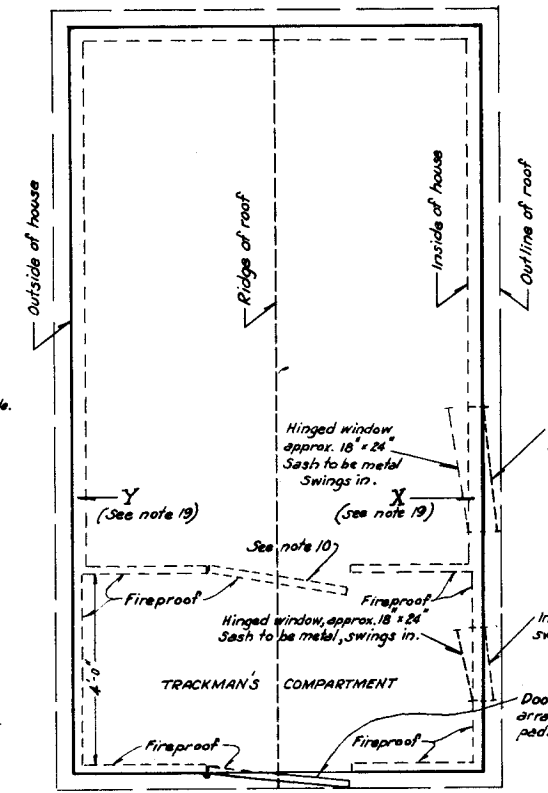
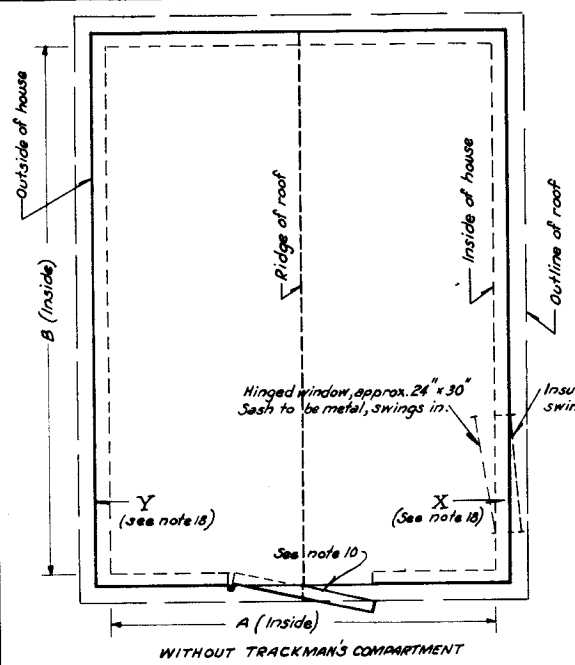
1. DESIGN AND CONSTRUCTION SHALL BE STRONG ENOUGH TO WITHSTAND ANY DETRIMENTAL REACTION FROM HIGH WIND AND STORM.
2. ALL SHEET METAL PARTS SHALL BE CONSTRUCTED OF COPPER BEARING STEEL, OR EQUAL IN RUST RESISTING PROPERTIES.
3. THE HOUSE SHALL BE CONSTRUCTED EITHER IN SECTIONS FOR DISASSEMBLING AT THE FACTORY AND REASSEMBLING IN THE FIELD, OR CONSTRUCTED AS A UNIT IN ACCORDANCE WITH ORDERING INFORMATION CONTAINED IN THE REQUISITION. REQUISITION SHALL CLEARLY INDICATE WHETHER OR NOT A SECTIONAL HOUSE IS DESIRED.
4. ALL METAL PARTS SHALL BE PRIMED WITH ONE COAT OF RED OXIDE OR EQUAL BEFORE ASSEMBLING. TO PERMIT ADHESION OF BOTH PRIMING AND FINISHING COATS OF PAINT, ALL WELDED AND BURNED AREAS SHALL BE PROPERLY TREATED. THE INSIDE SHALL THEN BE GIVEN TWO COATS OF HIGH GRADE ALUMINUM PAINT, AND THE OUTSIDE TWO COATS OF A FIRST GRADE PAINT-COLOR PENNSYLVANIA RAILROAD STANDARD LIGHT, ROOF BLACK, AND TRIM (WHERE PROVIDED) PENNSYLVANIA RAILROAD STANDARD DARK (BUILDING PAINT).
5. ALL JOININGS OF SECTIONS SHALL BE CLOSE FITTING, RIGID AND SECURE, SO THAT THE ENTIRE HOUSE WILL BE WEATHERPROOF.
6. ALL WALLS, ROOF AND DOORS, EXCEPT TRACKMAN'S COMPARTMENT (IF REQUIRED), SHALL BE PROVIDED WITH INSULATION AGAINST TRANSFER OF HEAT EQUIVALENT TO 12 INCHES OF BRICK.
7. DOOR FRAME SHALL PROVIDE NOT LESS THAN 36 INCHES CLEAR ENTRANCE SPACE.
8. THICKNESS OF SHEET METAL SHALL BE NOT LESS THAN #22 GAGE FOR PANELS, #18 GAGE FOR ROOF, AND #12 GAGE FOR DOOR FRAME.
9. HOUSES SHALL BE PROVIDED WITH LOUVRES OR EQUIVALENT FOR PROPER VENTILATION.
10. DOOR SHALL BE PROVIDED WITH A SUBSTANTIAL THREE POINT LOCKING DEVICE, LOCKING DOOR AT TOP, BOTTOM AND CENTER. THE HANDLE AT THE CENTER, OPERATING THE DEVICE, TO BE SO ARRANGED AS TO PERMIT IT TO BE LOCKED WITH A SIGNAL DEPARTMENT PADLOCK.
11. PANELS IN BOTH SIDES, AND END OPPOSITE ENTRANCE DOOR, SHALL BE MADE REMOVABLE, FROM THE OUTSIDE.
12. BASE FRAME (WITH OR WITHOUT FLOOR) SHALL BE CONSTRUCTED WITH SUFFICIENT STRENGTH TO SUPPORT THE ENTIRE HOUSE. HOUSES FURNISHED WITHOUT FLOOR SHALL BE PROVIDED WITH BASE ANGLE TO PERMIT SECURING TO FLOOR (FLOOR WILL BE CONSTRUCTED IN THE FIELD). HOUSES FURNISHED WITH FLOOR (SEE NOTE 13) AND TO BE SUPPORTED AS INDICATED IN DIAGRAM F. HOLES NOT LESS THAN 1 INCH DIA. SHALL BE PROVIDED IN BASE FRAME FOR SECURING BASE FRAME TO FOUNDATION.
13. FLOORS, WHEN PROVIDED AS A PART OF THE HOUSES, SHALL BE CONSTRUCTED TO WITHSTAND A LOADING OF 125 POUNDS PER SQUARE FOOT.
14. OPENINGS IN HOUSES FOR CABLES AND WIRES (WITH OR WITHOUT FLOOR) IF REQUIRED, SHALL BE SPECIFIED ON REQUISITION.
15. THE ENTIRE HOUSE SHALL BE ERECTED AT THE FACTORY FOR INSPECTION BY PENNSYLVANIA RAILROAD REPRESENTATIVES.
16. CONCRETE WALLS OR PIERS, AND FLOOR (WHEN NOT PROVIDED WITH HOUSE), SHALL BE CONSTRUCTED BY THE PENNSYLVANIA RAILROAD FORCES.
17. MANUFACTURER SHALL SUBMIT DRAWINGS, INDICATING THEIR PROPOSAL, TO THE CHIEF ENGINEER, PENNSYLVANIA RAILROAD FOR APPROVAL.
18. WHEN WINDOW IS DESIRED, REQUISITION SHALL SPECIFY WHETHER IT IS TO BE LOCATED AT X OR Y.
19. REQUISITION SHALL SPECIFY IF TRACKMAN'S COMPARTMENT IS DESIRED. WHEN FURNISHED A LOUVRE FOR VENTILATION SHALL BE PROVIDED IN GABLE OVER DOOR AS INDICATED AT G.

ORDERING REFERENCE

ORDER NUMBER		APPROXIMATE DIMENSIONS	
WITH FLOOR	WITHOUT FLOOR	A	B
5381	53811	8' 0"	11' 0"
5382	53822	8' 0"	14' 0"
5383	53833	8' 0"	19' 0"
	53844	11' 0"	16' 0"
	53855	14' 0"	16' 0"
	53866	14' 0"	19' 0"
	53877	16' 0"	19' 0"



Note:-
Provide intermediate piers M when B = 11' or 14'.
Provide intermediate piers N when B = 19'.



REDRAWN FROM UNAPPROVED PLAN
S-538- DATED APRIL 19, 1947 AND
REVISED

1 SHEET

S-538-E

THE PENNSYLVANIA RAILROAD

STANDARD

INSTRUMENT HOUSES

STEEL INSULATED

OFFICE OF CHIEF ENGINEER, PHILA., PA., APRIL 28, 1948.

Approved *McGuffey* Assistant Chief Engineer-T, C, & S

Approved *W. H. Smith* Chief Engineer