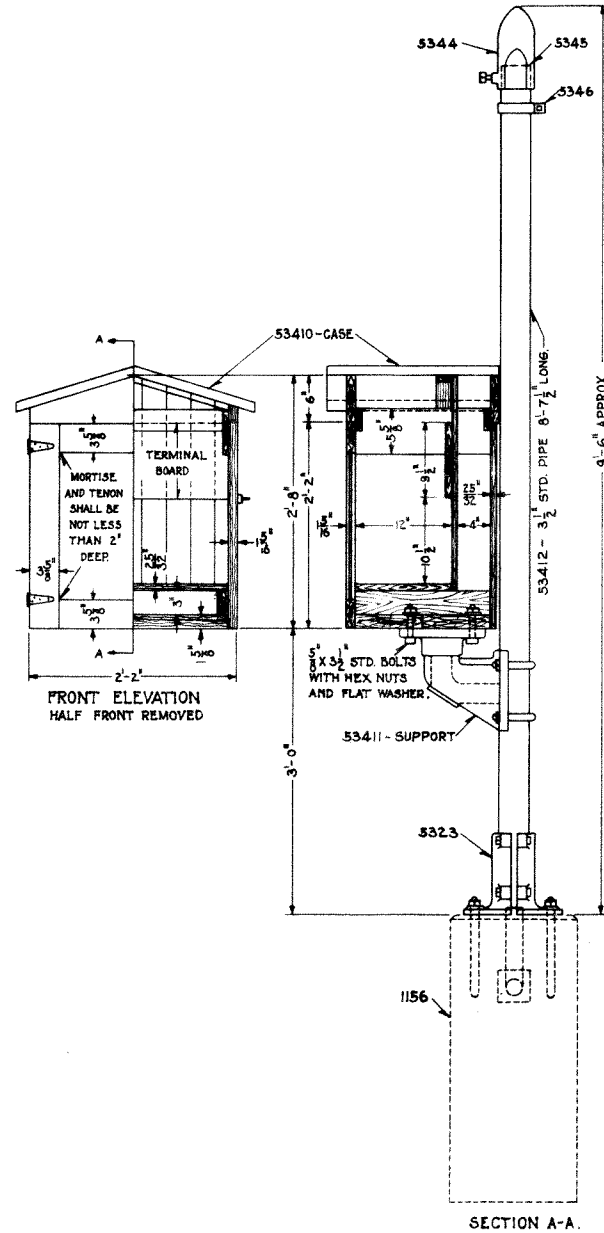
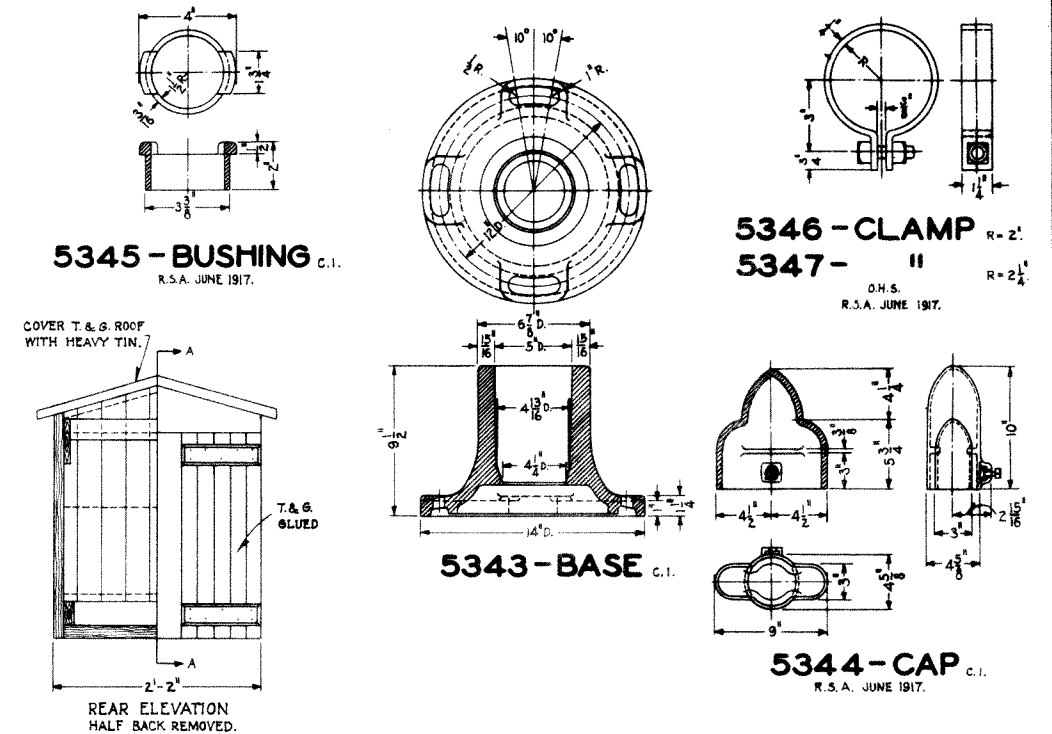


5341 - INSTRUMENT CASE



5342 - INSTRUMENT CASE



NOTE:-

1. CASING FOR 53410 SHALL BE MADE OF NORTHERN WHITE PINE, CEDAR, CYPRESS OR REDWOOD.
2. TERMINAL BOARDS SHALL BE MADE OF CEDAR, CYPRESS, WHITE PINE (IDAHO, NORTHERN OR SUGAR), PONDOLO PINE, SPRUCE (EASTERN OR SITKA) OR REDWOOD, SURFACED TO 26/32, SHELLACED (2 COATS) AND VARNISHED.
3. TERMINAL BOARDS SHALL BE GRADE B AND BETTER, FREE OF KNOTS.
4. ALL BOARDS AND STRIPS, OTHER THAN TERMINAL BOARDS, SHALL BE GRADE B AND BETTER, FREE OF SAPWOOD.
5. TERMINAL BOARDS SHALL BE SURFACED FOUR SIDES (S4S).
6. CASING FOR 53410 SHALL BE SURFACED TWO SIDES (S2S) AND TONGUE AND GROOVE (C.M. OR S.M.).
7. ALL GRADES, SIZES AND WORKINGS SHALL BE IN ACCORDANCE WITH AMERICAN LUMBER STANDARDS.
8. ALL JOINTS EXPOSED TO THE WEATHER SHALL BE GLUED.
9. INSIDE OF CASE, EXCEPT TERMINAL BOARDS, SHALL BE GIVEN TWO COATS OF SLATE COLORED FIRE RETARDING PAINT APPROVED BY THE CHIEF SIGNAL ENGINEER.
10. PAINT OUTSIDE OF CASE BLACK.
11. EACH HINGE SHALL BE SECURED WITH BOLTS AND SCREWS, USING NOT LESS THAN FOUR BOLTS.
12. CONCRETE SHALL BE IN ACCORDANCE WITH SPECIFICATION C.E. 76, PROPORTION B.
13. FOUNDATIONS SHALL BE NOT LESS THAN TWO FEET UNDERGROUND.
14. AFTER WIRING HAS BEEN COMPLETED, CLOSE ALL OPENINGS SO AS TO PREVENT RODENTS FROM ENTERING.
15. WIRE INLETS MAY BE LOCATED TO SUIT LOCAL CONDITIONS.

REVISIONS
REDRAWN FROM APPROVED PLAN S-534-C, DATED 5-2-22, LAST REVISED 8-31-26, AND REVISED.

1 SHEET

S-534-D

THE PENNSYLVANIA RAILROAD
STANDARD

CABLE POST AND INSTRUMENT CASES

OFFICE OF CHIEF SIGNAL ENGINEER, PHILA., PA. MARCH 14, 1928

Approved *[Signature]* Chief Signal Engineer

Approved *[Signature]* Chief Engineer