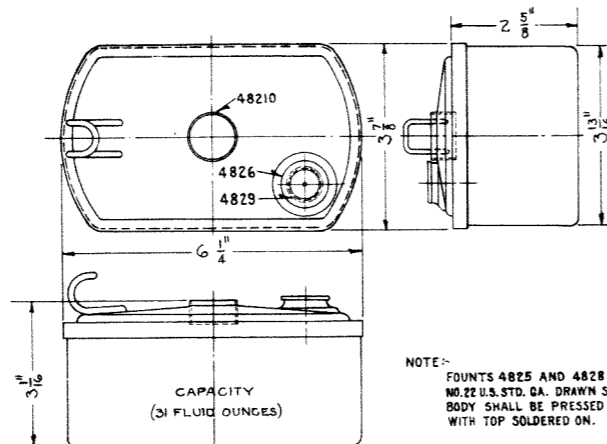


4821-CHIMNEY

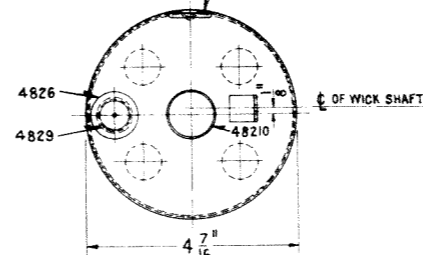


4825-FOUNT

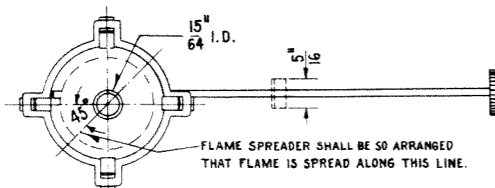
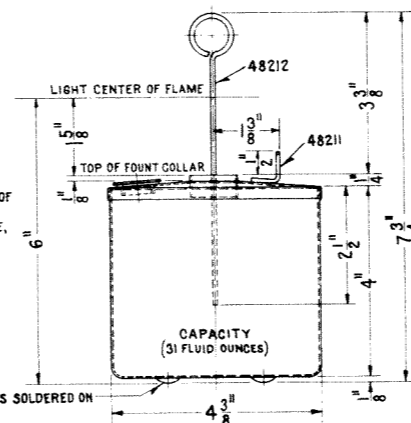
R.S.A. APR. 1914

NOTE: FOUNTS 4825 AND 4826 SHALL BE MADE OF NO. 22 U.S. STD. GA. DRAWN STEEL, TINNED. BODY SHALL BE PRESSED OUT OF ONE PIECE, WITH TOP SOLDERED ON.

HANDLE, WHEN SOLDERED IN PLACE SHALL NOT EXTEND BEYOND DIAMETER OF BODY.

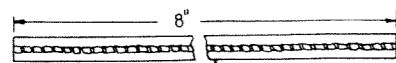
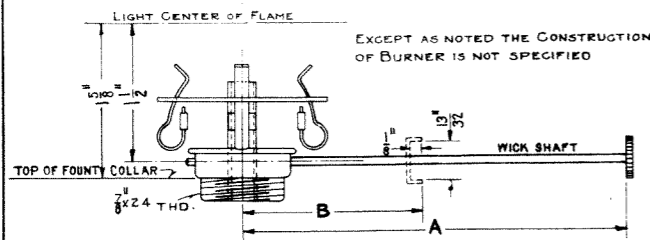


4826-FOUNT

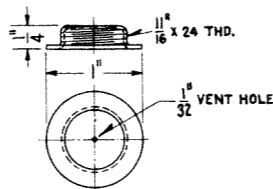


4822-BURNER A = 4"

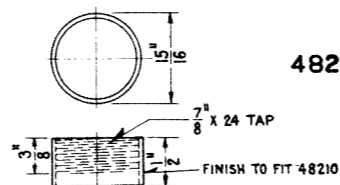
4823-BURNER B = $1\frac{7}{8}$ "



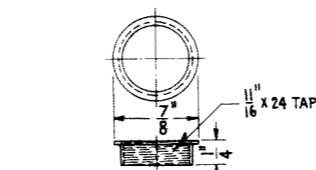
4824-WICK
(CENTER CORE FELT)



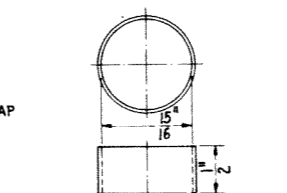
4826-FEEDER CAP
NO. 20 A.W.G. BRASS



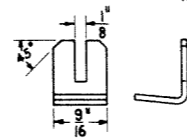
4827-BURNER COLLAR
NO. 20 A.W.G. BRASS TUBING



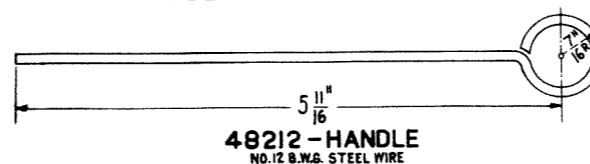
4829-FEEDER COLLAR
NO. 20 A.W.G. BRASS



48210-FOUNT COLLAR
NO. 20 A.W.G. BRASS TUBING



48211-WICK SHAFT LOCK



48212-HANDLE
NO. 12 B.W.G. STEEL WIRE

SPECIFICATIONS FOR CHIMNEYS

- GENERAL DESCRIPTION:**
This specification covers Long Time Burner Chimneys.
- KIND OF GLASS:**
Chimneys shall be made of LOW EXPANSION HEAT RESISTING GLASS.
- ORDERING:**
As far as possible Chimneys shall be ordered in multiples of standard package quantities.
- BOILING WATER TESTS:**
Chimneys shall stand immersion in boiling water (distilled) for two (2) hours without showing any disintegration.
- CHILLING TESTS:**
(a) In making this test the Chimney is placed on a suitable Burner and the flame is turned up as far as possible without smoking. The lamp is then tilted to an angle of forty-five (45) degrees, in a direction parallel to the slot in the Burner, and allowed to remain in this position for five (5) minutes. During this period the flame shall be regulated, if necessary, so that a strip not to exceed three-eighths ($\frac{3}{8}$) of an inch wide running the length of the Chimney and parallel to its axis is smoked. The Chimney is then removed from the Burner, and immediately dropped, top downward, into a vessel of Ice water, maintained at a temperature of between forty-three (43) and fifty (50) degrees Fahr., care being taken that the Chimney does not strike the Ice.
(b) Chimneys tested as described in 5a shall not show breakage in excess of three (3) in twenty-four (24) tested.
(c) If the first twenty-four (24) samples fail to pass the Chilling test, an additional twenty-four (24) samples shall be taken for a second test, and if the average of breakage of the two (2) tests does not exceed twelve and one-half ($12\frac{1}{2}$) per cent, the material is acceptable.
- PERMISSIVE VARIATIONS:**
Chimneys shall conform to approved drawings.
- MARKING:**
Chimneys shall show the Manufacturer's Trade Mark.
- PACKING:**
Chimneys shall be carefully packed, each package containing twelve (12) dozen Chimneys, in suitable containers, marked to show quantity, requisition number, order number, and, name and address of Consignee.
- WORKMANSHIP:**
Chimneys shall be clear, of smooth surface, and have both ends finished without sharp edges.
- REHEARING:**
When tests are made at the Purchaser's laboratory, samples of rejected material will be held for one month from the date of test report. In case the Manufacturer is dissatisfied with results of test, he may make claim for rehearing within that time. Failure to raise a question within one month, will be construed as evidence of satisfaction with results of test. The samples will be scrapped and claim for a rehearing will not be considered.
- FREIGHT CHARGES:**
Rejected material will be returned to the Manufacturer, who shall pay freight charges both ways.

REVISIONS

B - JANUARY 7, 1926

APPROVED: *Arthur H. ...*

S-482-B

SHEET

THE PENNSYLVANIA RAILROAD
STANDARD
LAMP DETAILS
FOR OIL LIGHTED SWITCH AND SIGNAL LAMPS
OFFICE OF CHIEF SIGNAL ENGINEER, PHILA., PA., OCT. 4, 1925.

Approved: *Arthur H. ...* Chief Signal Engineer
Approved: *...* Engr. of Standards
Approved: *...* Chief Engineer