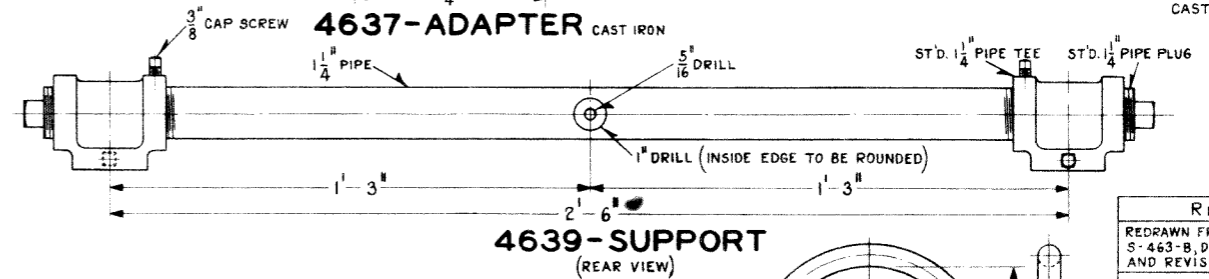
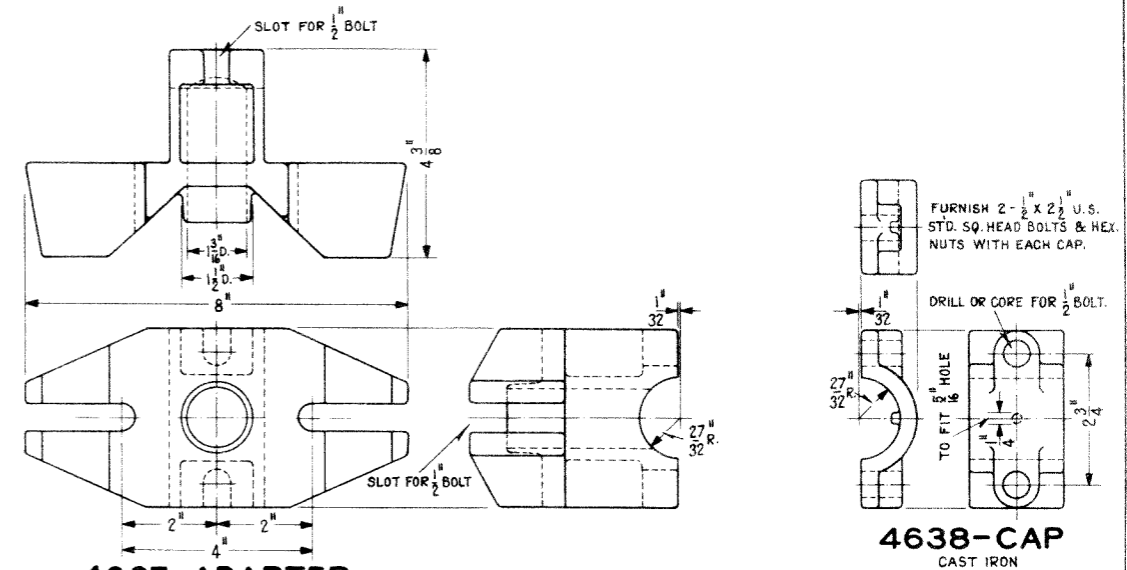
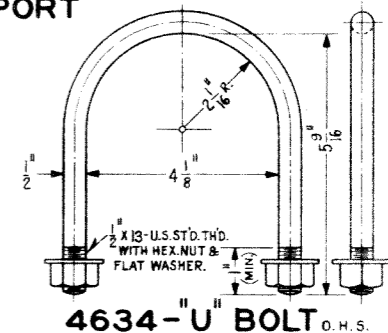


ORDERING REFERENCE		
ORDER NO.	NAME	REQUIRED
*4631	SIGNAL COMPLETE.	2-4635, 1-4637, 1-4638, 1-4639 & (1-4634 UNLESS OTHERWISE SPECIFIED)
4634	"U" BOLT.	
4635	SIGNAL UNIT.	
4637	ADAPTER.	
4638	CAP.	
4639	SUPPORT.	



#### NOTE:

- ALL MACHINE SCREWS, WASHERS, PINNED PINS, COTTER PINS, ETC., EXPOSED TO THE WEATHER SHALL BE OF NON-CORROSIVE METAL, OR CADMIUM PLATED.
- DOOR OF SIGNAL CASE SHALL BE EQUIPPED FOR PADLOCK.
- HOODS SHALL BE ARRANGED SO THAT THEY CAN BE ROTATED APPROX. 25 DEG. IN EITHER DIRECTION FROM CENTRAL POSITION.
- SIGNAL UNIT SHALL BE EQUIPPED WITH INSULATED RECEPTACLE FOR SINGLE CONTACT BAYONET CANDELABRA BASE AND WIRE TERMINALS. WIRES SHALL BE RUN BETWEEN RECEPTACLE AND TERMINALS.
- SIGNAL UNIT SHALL BE COMPLETE FOR ATTACHING TO 1 1/4" STD. TEE.
- IF SIGNAL IS TO BE APPLIED TO POST OTHER THAN 4" O.D., SPECIFY OUTSIDE DIMENSIONS.
- SIGNALS SHALL BE WIRED IN ACCORDANCE WITH PLAN NO. S-860.
- SIGNALS SHALL NOT BE LIGHTED, EXCEPT FOR APPROACHING TRAINS, WHEN RED LIGHTS FLASHING ALTERNATELY (30 TO 35 TIMES PER MINUTE) MUST BE DISPLAYED.
- UNLESS OTHERWISE ORDERED, HIGHWAY CROSSING SIGNAL SHALL BE INSTALLED ON HIGHWAY CROSSING SIGN IN ACCORDANCE WITH M.W. PLAN NO. 78300.
- CONCRETE FOUNDATION SHALL BE USED FOR THE HIGHWAY CROSSING SIGN.



REVISIONS  
REDRAWN FROM APPROVED PLAN  
S-463-B, DATED APRIL 21, 1923  
AND REVISED.

1 SHEET

S-463-C

THE PENNSYLVANIA RAILROAD  
STANDARD  
SIGNAL  
COLOR LIGHT HIGHWAY CROSSING  
OFFICE OF CHIEF SIGNAL ENGINEER, PHILA., PA. MARCH 27, 1928.

Approved  
A.H. Hurd  
Chief Signal Engineer

Approved  
J. H. Schoenberg  
Chief Engineer

