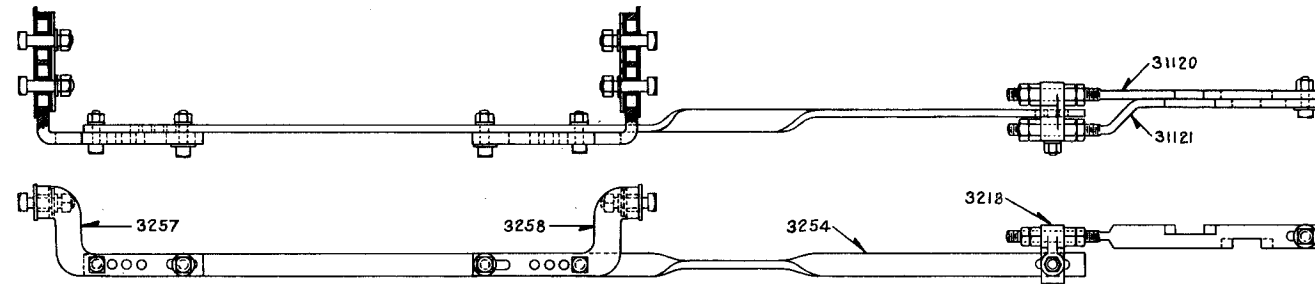
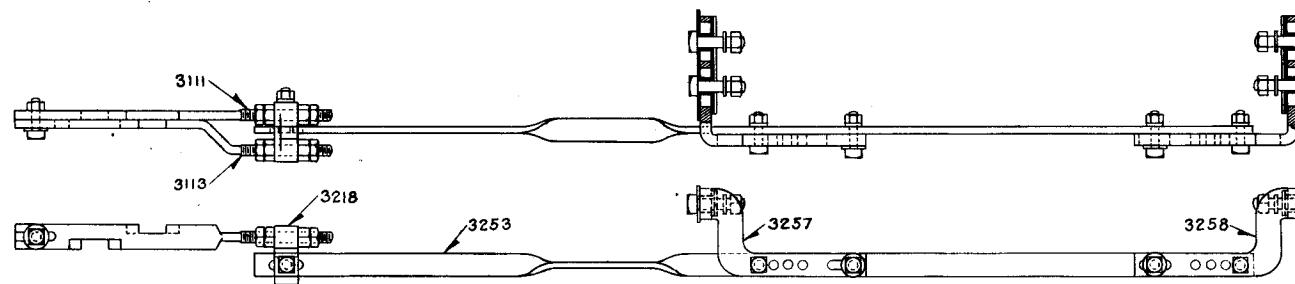


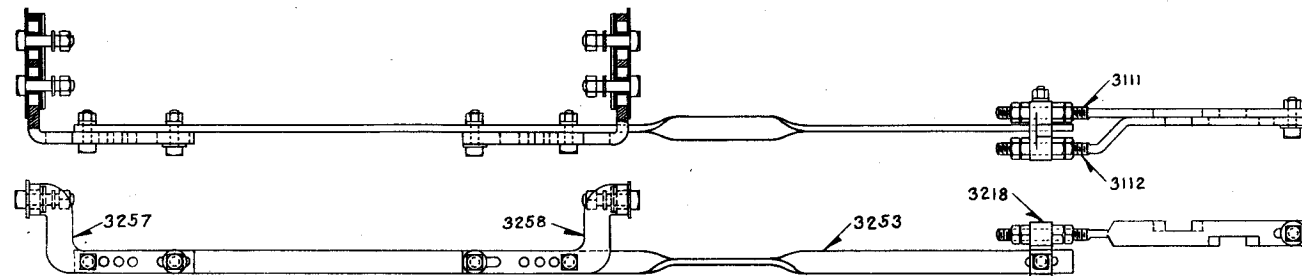
3101-L.H. ROD COMPLETE.



3103-R.H. ROD COMPLETE.



3105-L.H. ROD COMPLETE.



3107-R.H. ROD COMPLETE.

ORDERING REFERENCE		
ORDER NO.	APPLICATION	FURNISH
3101	L.H. ROD FOR TYPE "A-5" MECHANISM.	AS SHOWN.
3102	" " " " " " " "	" " WITHOUT 31120, 31122 & 32118.
3103	R.H. " " " " " " " "	" " " " " " " "
3104	" " " " " " " "	" " WITHOUT 31120, 31121 & 32118.
3105	L.H. " " " " " " " "	" " " " " " " "
3106	" " " " " " " "	" " WITHOUT 3111, 3113 & 32118.
3107	R.H. " " " " " " " "	" " " " " " " "
3108	" " " " " " " "	" " WITHOUT 3111, 3112 & 32118.

FOR TYPE "A-1" MECH. USE SAME FRONT AND LOCK RODS AS FOR TYPE "A-5" MECH.

FOR TYPE "NO. 14" MECH. USE SAME FRONT RODS AS FOR TYPE "G" MECH. AND SAME LOCK RODS AS FOR TYPE "A-5" MECH.

## NOTE:-

- BOLTS SHALL BE AMERICAN STANDARD REGULAR SQUARE HEAD WITH HEX. NUTS. THREAD TO BE NC-2.
- FOR BOLTS, NUTS, WASHERS, INSULATION ETC. REQUIRED WITH ALL RODS SEE 3101.
- HEAT TREATED BOLTS AND NUTS SHALL CONFORM TO AND SHALL BE MARKED (C) OR (N) IN ACCORDANCE WITH CURRENT ISSUE OF P.R.R. SPECIFICATION NO. C.E. 9.

## REVISIONS

1 SHEET

S-310-A



# THE PENNSYLVANIA RAILROAD

## STANDARD FRONT AND LOCK RODS

FOR MOVABLE POINT FR063 131 LB. R.E. AND 152 LB. P.S. RAIL.  
OFFICE OF CHIEF SIGNAL ENGINEER, PHILA., PA., MAR. 30, 1935.

Approved *[Signature]*  
Chief Signal Engineer

Approved *[Signature]*  
Acting Chief Engineer