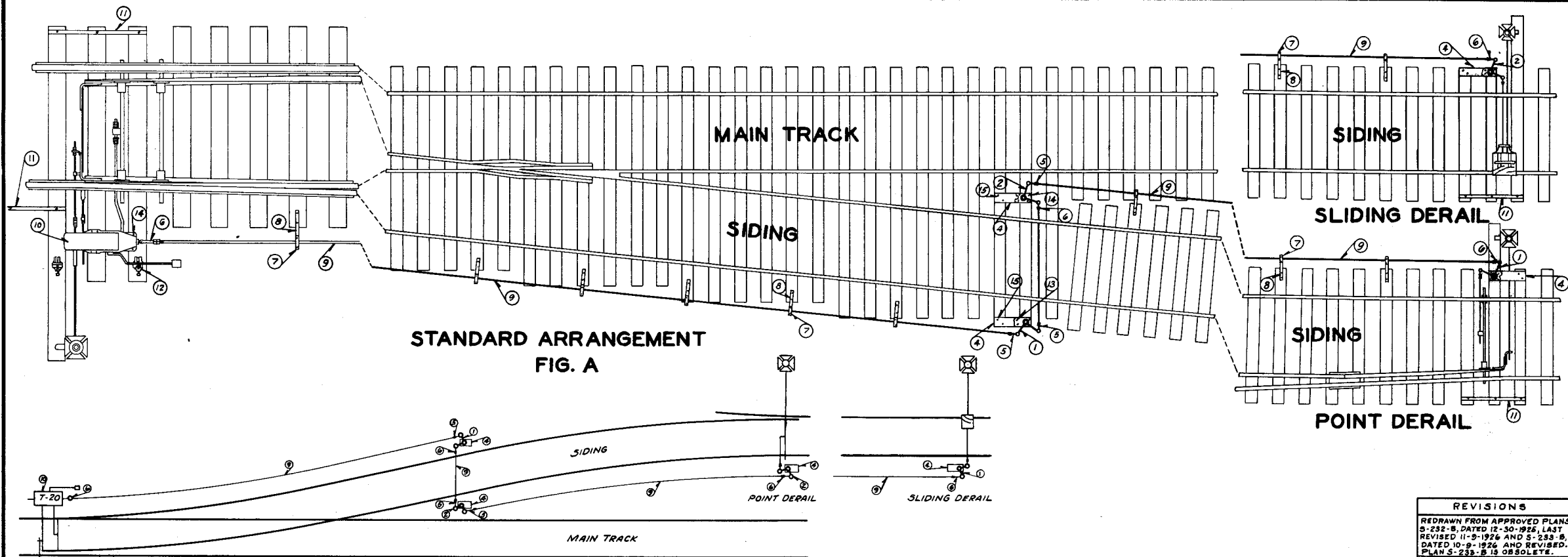
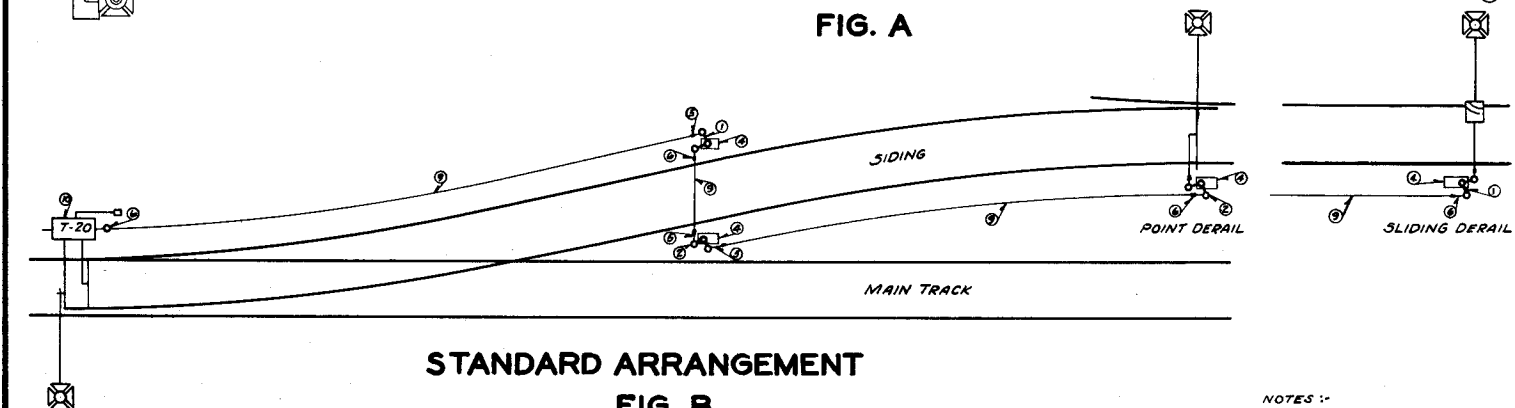


Inspector TYS #2



STANDARD ARRANGEMENT
FIG. A



STANDARD ARRANGEMENT
FIG. B

BILL OF MATERIAL

NO.	FIG. A REQD.	FIG. B REQD.	NAME	FIG. NO.	DWG. NO.	STORES CAT. REF.
1	1	2	CRANK AND STAND (WITH SLIDING DERAIL)	1003	S-100	2A-841
1	2	1	CRANK AND STAND (WITH POINT DERAIL)			
2	2	1	CRANK AND STAND (WITH SLIDING DERAIL)	1002	S-100	2A-840
2	1	2	CRANK AND STAND (WITH POINT DERAIL)			
4	3	3	SUPPORTING PLATE	1013	S-101	2A-1770
5	3	3	SOLID JAW	1213	S-121	2A-1240
6	3	3	TANG END WITH SCREW JAW	1219	S-121	2A-1238
7	AS REQUIRED		PIPE CARRIERS	1404	S-140	2A-510
8	AS REQUIRED		PIPE CARRIER SUPPORTS	13810	S-138	2A-2741
9	AS REQUIRED		STAND 1 IN. PIPE	1364	S-136	2A-1711
10	1	1	T-20 MOVEMENT			2A-3037
11	3	3	TIE STRAP	2002	S-200	2A-2687
12	2	2	LEVER STAND FOR T-20 PC. 105173 DWG. B-8373 SH-6 U. S. & S. CO.			2A-3916
13	6	6	3/4" x 2" SQ. HD. BOLTS WITH HEX. NUTS & LOCK WASHERS			
14	10	10	3/4" x 8 1/2" SQ. HD. BOLTS WITH HEX. NUTS & LOCK WASHERS			
15	15	15	1/4" x 4 1/2" GALV. LAG SCREWS			

- NOTES:-
1. WHERE DIFFICULTIES IN MAINTAINING PROPER ADJUSTMENTS OF PIPE LINE OR OPERATING THE DERAIL ARE ENCOUNTERED, CENTER LOCK LEVER LOCKING IN ACCORDANCE WITH DRAWING S-228 SHOULD BE INSTALLED.
 2. FOR BONDING AND INSULATING JOINT LOCATIONS, SEE DRAWING S-803.
 3. FOR ARRANGEMENT OF SHUNTING TRACK AT T-20 MOVEMENT, SEE DRAWING S-182.
 4. FOR SPECIFICATIONS COVERING INSTALLATION OF PIPE LINE, SEE INSTRUCTIONS 145 TO 148 INCL. OF C.E. 223 AND C. S. E. 30.
 5. UNLESS OTHERWISE SPECIFIED T-20 MOVEMENTS SHALL BE EQUIPPED WITH POINT DETECTOR.
 6. FOR FRONT AND LOCK RODS, OPERATING RODS, ETC., SEE DRAWINGS COVERING THE ITEMS REQUIRED.
 7. WHERE TRACK CIRCUITS ARE NOT IN SERVICE, OR IF NO OTHER CIRCUITS ARE INVOLVED, THE CIRCUIT CONTROLLER FOR T-20 MOVEMENT SHALL BE OMITTED.
 8. EXCEPT AS INDICATED, ARRANGEMENT FIGURE B SHALL BE SAME AS FOR FIGURE A.

REVISIONS
REDRAWN FROM APPROVED PLANS
S-232-B, DATED 12-30-1925, LAST
REVISED 11-9-1926 AND S-233-B,
DATED 10-9-1926 AND REVISED.
PLANS S-232-B IS OBSOLETE.

1 SHEET

S-232-C

THE PENNSYLVANIA RAILROAD
STANDARD
**LOCKING FOR NON-INTERLOCKED
TURNOUTS EQUIPPED WITH DERAIL**

OFFICE OF CHIEF ENGINEER, PHILA., PA., JANUARY 25, 1950
Approved *H. G. Salmonson* Assistant Chief Engineer-Signals
Approved *J. W. Russell* Chief Engineer