

REVISIONS
B. MAY 26, 1946. SHEETS 1 AND 3 CHANGED. ITEMS 19516 TO 19523 INCL. CHANGED TO STD. 7" x 9" TIMBERS.
APPROVED <i>H. Griffith</i>

FOR DETAILS OF TIES SEE SHEETS 2 & 3.

SHEET 1 OF 3.

**THE PENNSYLVANIA RAILROAD**  
STANDARD  
**SWITCH TIES**  
FOR INTERLOCKED SINGLE SWITCHES.  
OFFICE OF CHIEF ENGINEER, PHILA., PA., DECEMBER 4, 1947.

Approved *H. Griffith*  
Assistant Chief Engineer-T.C. & S.

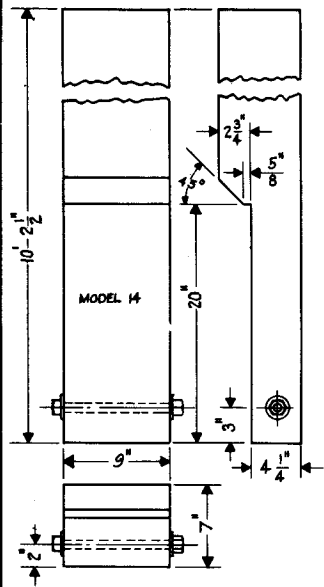
Approved *W. H. Smith*  
Chief Engineer

**S-195-B**

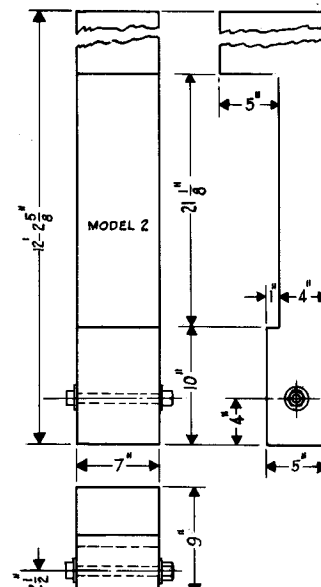


1. ALL TIES FOR INTERLOCKED SWITCHES SHALL MEET THE REQUIREMENTS OF C.E. 23, WITH THE ADDITIONAL REQUIREMENT THAT THE FRAMED END OF ALL TIES SHALL BE STRAIGHT GRAIN WOOD WITHOUT KNOTS, DECAY, SHAKES, SPLITS, OR HOLES OF ANY KIND, AND SHALL BE CROSBOTED IN ACCORDANCE WITH PARAGRAPH 25, C.E. 23 AFTER FRAMING HAS BEEN COMPLETED.
2. BEFORE CROSBOTING, EACH TIE SHALL BE DRILLED FOR  $\frac{3}{8}$  IN. BOLT, LOCATED AS INDICATED. AFTER CROSBOTING, BUT BEFORE SHIPMENT, EACH TIE SHALL BE PROVIDED WITH  $\frac{3}{8}$  IN. GALVANIZED SQ. HD. BOLT WITH HEX. NUT, AND FLAT WASHER EACH SIDE OF TIE. PULL BOLT UP TIGHT.
3. UNLESS OTHERWISE INDICATED, TIES ARE ADAPTABLE FOR EITHER RIGHT OR LEFT HAND LAYOUT.
4. FOR LOCATIONS OF TIES SEE SHEET I OF THIS DRAWING.

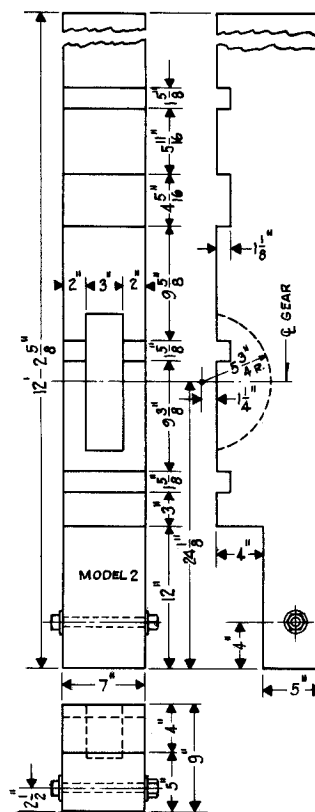
*[Signature]*  
Chief Engineer



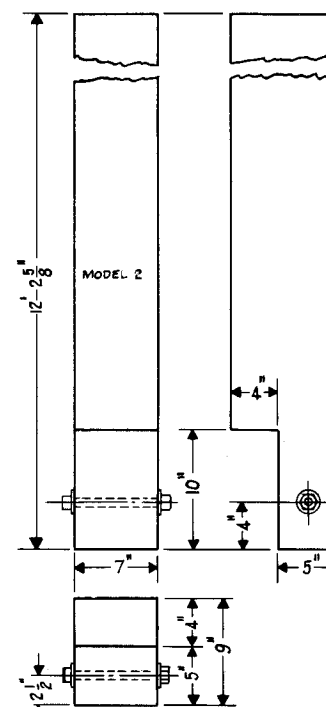
**19513 SWITCH TIE.**  
STORES CAT. REF. NO. 5A-87



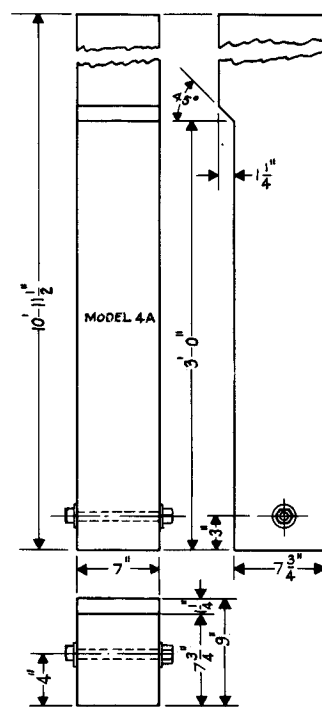
**19515 SWITCH TIE.**  
STORES CAT. REF. NO. 5A-88



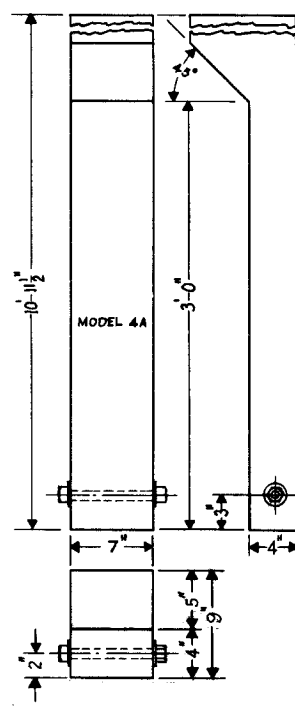
**19516 SWITCH TIE.**  
STORES CAT. REF. NO. 5A-89



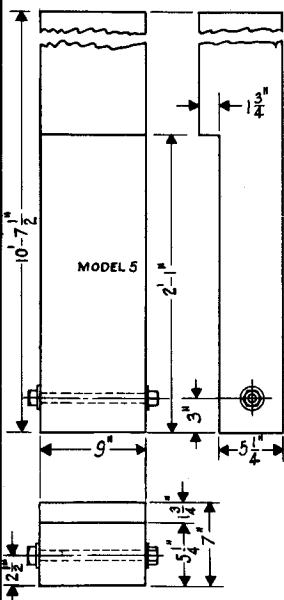
**19517 SWITCH TIE.**  
STORES CAT. REF. NO. 5A-90



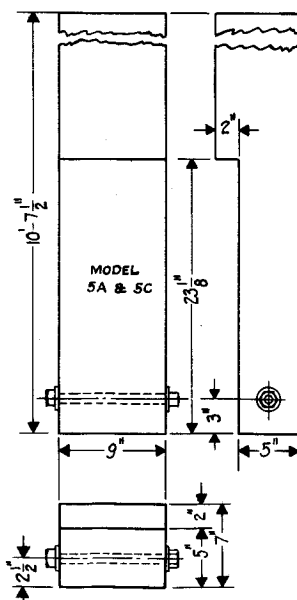
**19518 SWITCH TIE.**  
STORES CAT. REF. NO. 5A-91



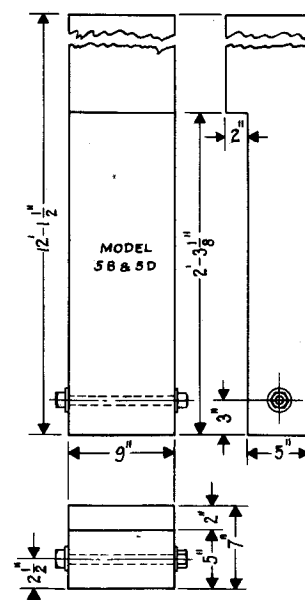
**19519 SWITCH TIE.**  
STORES CAT. REF. NO. 5A-92



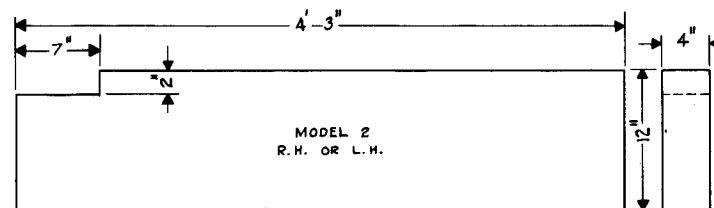
**19520 SWITCH TIE.**  
STORES CAT. REF. NO. 5A-93



**19521 SWITCH TIE.**  
STORES CAT. REF. NO. 5A-94



**19522 SWITCH TIE.**  
STORES CAT. REF. NO. 5A-95



**19523 TIMBER.**  
STORES CAT. REF. NO. 5A-96

FOR NOTES SEE SHEET 2.

SHEET 3 OF 3.



**S-195-B**

**THE PENNSYLVANIA RAILROAD**  
STANDARD  
**SWITCH TIES**

FOR INTERLOCKED SINGLE SWITCHES.  
OFFICE OF CHIEF ENGINEER, PHILA., PA., DECEMBER 4, 1947.

Approved  
*McGuffee*  
Assistant Chief Engineer-T.C. & S.

Approved  
*W. H. H. H.*  
Chief Engineer