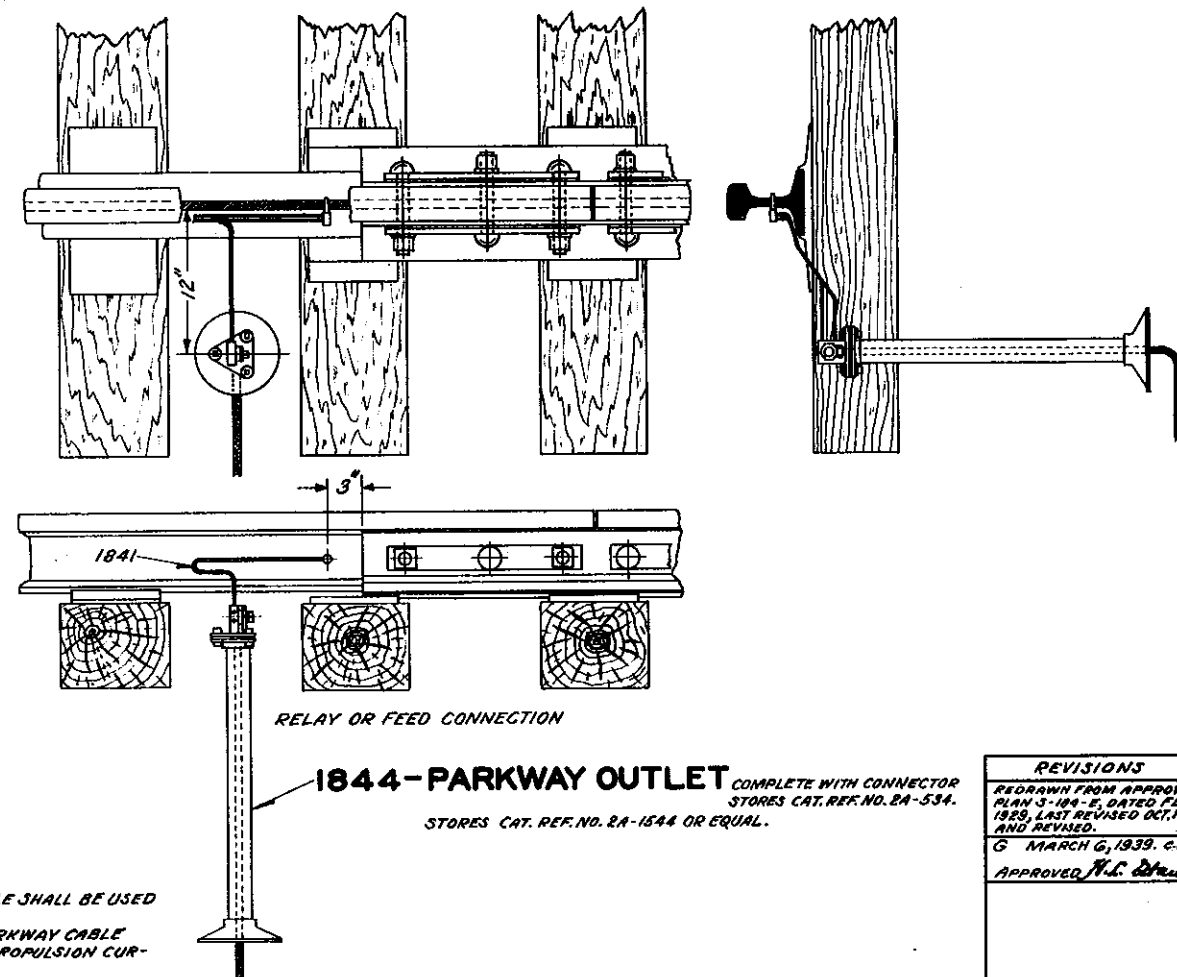


NOTES:-

1. **PARKWAY OUTLET.**
PARKWAY OUTLET STORES CAT. REF. NO. 2A-1544, OR SIMILAR, TO BE FURNISHED ASSEMBLED.
2. **MATERIAL FOR RAIL CONNECTIONS.**
 - (a) CONDUCTOR SHALL CONSIST OF ONE (1) COPPER STRAND IN CENTER AND SIX (6) GALVANIZED STEEL STRANDS IN ACCORDANCE WITH SPECIFICATION FOR STRANDED WIRES CURRENT ISSUE OF PLAN NO. S-179.
 - (b) TERMINALS SHALL BE IN ACCORDANCE WITH CURRENT ISSUE OF PLAN NO. S-179.
3. **TINNING OF CONDUCTORS.**
 - (a) STUB ENDS OF CONNECTIONS 1841 AND 1842 SHALL BE TINNED FOR A LENGTH OF 2 INCHES.
 - (b) STUB ENDS SHALL BE CLOSELY BUNCHED AND FINISHED TINNED DIAMETER APPROXIMATING THE NOMINAL DIAMETER OF THE STRAND. TEST 11(H-1) PLAN S-179 NOT REQUIRED.

FIELD WORK.

1. NON-INDUCTIVE PARKWAY CABLE SHALL BE USED FOR A.C. TRACK CIRCUITS.
2. NO. 6 A.W.G. NON-INDUCTIVE PARKWAY CABLE SHALL BE USED WHERE THERE IS PROPULSION CURRENT RETURN.
3. WHEN IN PLACE, CONNECTION AND TOP OF PARKWAY OUTLET SHALL BE GIVEN A HEAVY COAT OF A RUST PREVENTATIVE APPROVED BY THE ASSISTANT CHIEF ENGINEER-SIGNALS.
4. PARKWAY OUTLETS SHALL BE FILLED WITH SAND OR COMPOUND.
5. PARKWAY CABLE SHALL BE NOT LESS THAN 2 FEET 6 INCHES BELOW THE BOTTOM OF TIE.
6. THE FILL AROUND PARKWAY CABLE SHALL BE FREE FROM CINDERS.



REVISIONS
REDRAWN FROM APPROVED PLAN S-104-E, DATED FEB. 1929, LAST REVISED OCT. 17, 1934, AND REVISED.
G MARCH 6, 1939. C.D.
APPROVED <i>H.C. Stanton</i>

1 SHEET



S-184-G

THE PENNSYLVANIA RAILROAD

STANDARD
TRACK CIRCUIT CONNECTIONS
PARKWAY CABLE

OFFICE OF ASSISTANT CHIEF ENGINEER-SIGNALS, PHILA., PA., MAY 16, 1938.

Approved
H.C. Stanton
Assistant Chief Engineer-Signals

Approved
H.C. Stanton
Chief Engineer