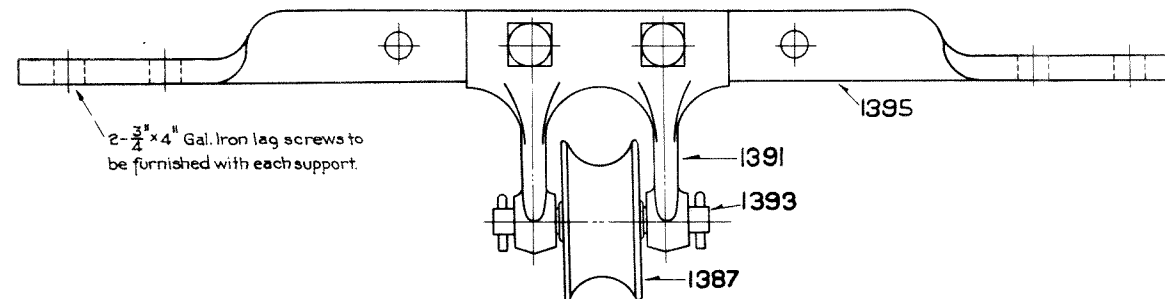
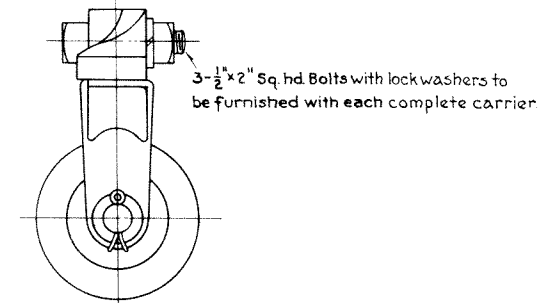
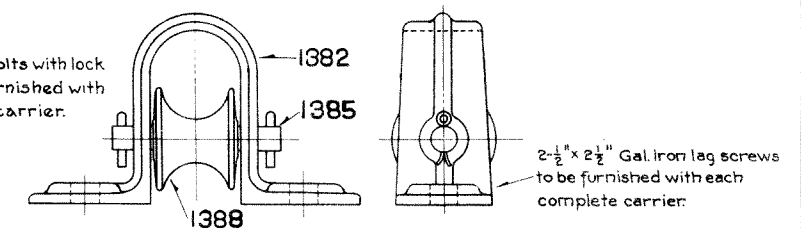
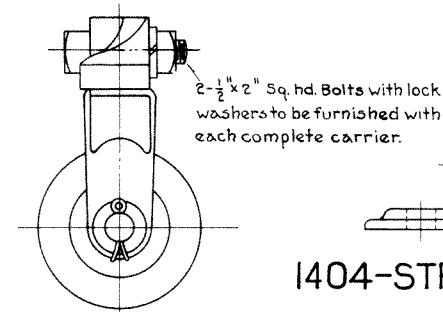


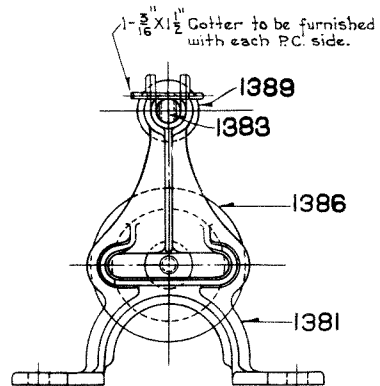
1401- TRANSVERSE PIPE CARRIER TWO-WAY COMPLETE



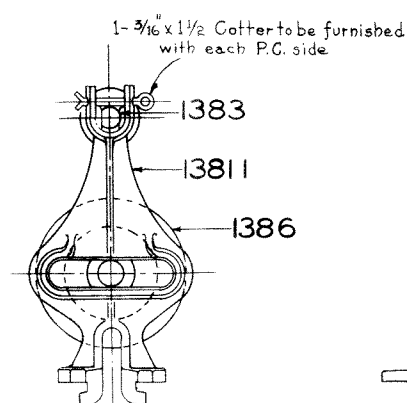
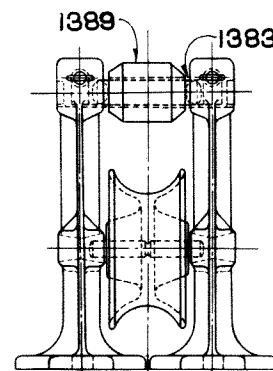
1402- TRANSVERSE PIPE CARRIER ONE-WAY COMPLETE



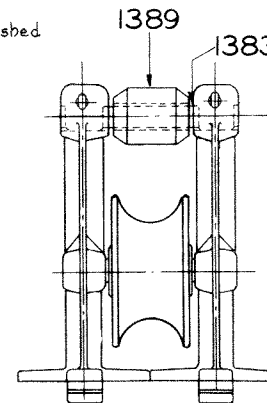
1404-STRAP PIPE CARRIER COMPLETE



PIPE CARRIER ASSEMBLY "B"




PIPE CARRIER ASSEMBLY "A"



REVISIONS
B. NOV. 26, 1928
APPROVED: *Arthur*

1 SHEET S-140-B


**THE PENNSYLVANIA RAILROAD
STANDARD
PIPE CARRIERS**
OFFICE OF CHIEF SIGNAL ENGINEER, PHILA. PA., MAY 24, 1920

Correct *Arthur* Chief Signal Engineer Approved *Arthur* Chief Engineer