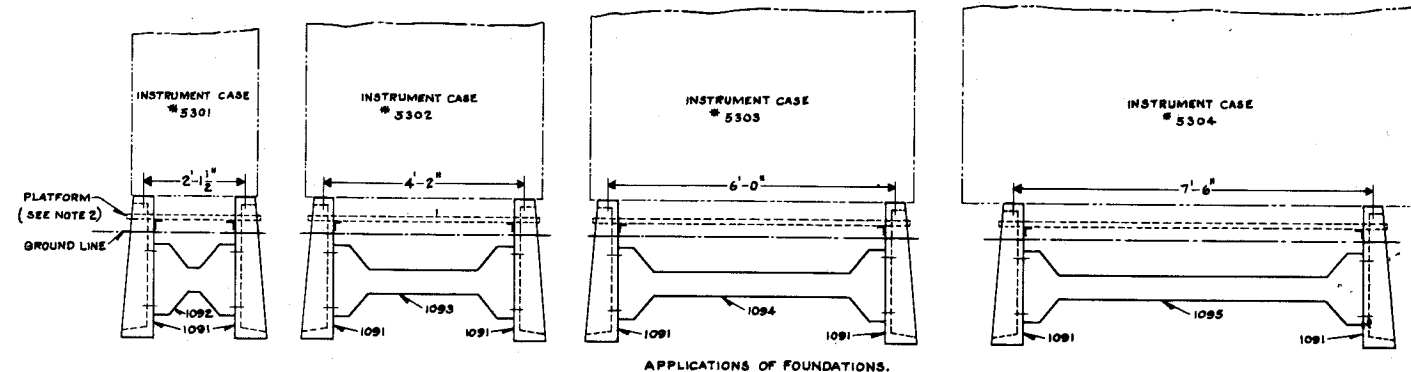
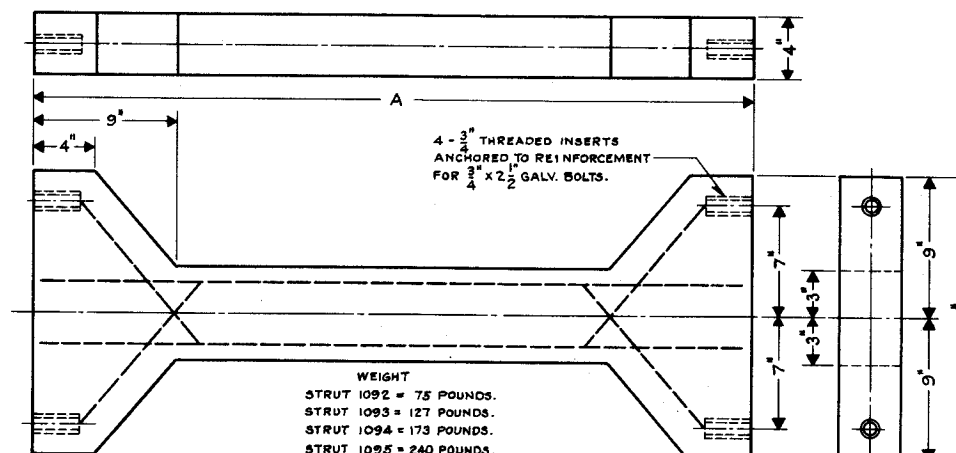


1091 PIER REINFORCED CONCRETE.
STORES CAT. REF. NO. 2A-5791

FURNISH 2 - $\frac{3}{4}$ " X $2\frac{1}{2}$ " HOT DIP GALV. U.S. STD. SQ. HD. BOLTS WITH $\frac{3}{4}$ " FLAT WASHER AND 2 - $\frac{3}{4}$ " X 8" HOT DIP GALV. U.S. STD. BOLTS WITH $\frac{3}{4}$ " HEX. NUT & $\frac{3}{4}$ " FLAT WASHER WITH EACH PIER.



APPLICATIONS OF FOUNDATIONS.



1092 STRUT FOR CASE 5301 A = 1'-5 1/2".
STORES CAT. REF. NO. 2A-5792
1093 STRUT FOR CASE 5302 A = 3'-9".
STORES CAT. REF. NO. 2A-5793
1094 STRUT FOR CASE 5303 A = 5'-7".
STORES CAT. REF. NO. 2A-5794
1095 STRUT FOR CASE 5304 A = 7'-1".
STORES CAT. REF. NO. 2A-5795

- NOTE:-
- FOUNDATIONS ARE SHIPPED KNOCKED-DOWN AND ARE TO BE ASSEMBLED IN THE FIELD.
 - ORDER PLATFORM SUPPORTS, PLATFORM ANGLES AND GRATINGS IN ACCORDANCE WITH CURRENT ISSUE OF PLAN S-III.
 - FOUNDATIONS SHALL BE MADE OF PORTLAND CEMENT CONCRETE IN ACCORDANCE WITH AMERICAN RAILWAY ENGINEERING ASSOCIATION SPECIFICATION.
 - COARSE AGGREGATE SHALL CONSIST OF $\frac{3}{4}$ " MAXIMUM SIZE STONE OR GRAVEL.
 - NOT LESS THAN 6 SACKS OF CEMENT SHALL BE USED PER CUBIC YARD OF CONCRETE.
 - WATER CEMENT RATIO TO PRODUCE A COMPRESSIVE STRENGTH OF 2800 POUNDS PER SQUARE INCH AFTER 28 DAYS SHALL BE USED.
 - BOLTS SHALL BE PAINTED WITH ASPHALT PAINT BEFORE ASSEMBLY.

REVISIONS

1 SHEET

S-109-A

THE PENNSYLVANIA RAILROAD
STANDARD
FOUNDATION
PRECAST CONCRETE
FOR INSTRUMENT CASES

OFFICE OF CHIEF ENGINEER, PHILA., PA.,

Approved *McGriffith* Assistant Chief Engineer-T.C.&S.
Approved *McKinney* Chief Engineer