

3043-SIGNAL COMPLETE
FOR BRIDGE BRACKET OR CANTILEVER
ASSEMBLAGE

ITEM NO	REQD	NAME	FIG	PLAN
1	1	SIGNAL MAST 13'-0" OF 5" PIPE		
2	1	PINNACLE	30115	301-S1
3	1	BASE	30186	301-S5
4	1	MECHANISM COMPLETE FOR WORKING ARM		
5	1	SEMAPHORE SPECTACLE	30183	301-S6
6	1	SIGNAL ROUNDLS SEE TABLE BELOW	2091	209-3
7	2	LAMP BRACKETS	30015	301-S1
8	1	BLADE COMPLETE	23636	236-33
9	1	BOLTS 2 FOR BRIDGE 4 FOR BRACKET POST		301-S3
10	1	LADDER COMPLETE SEE LADDER ASSEMBLAGE		
11	4	HOOK BOLTS WHEN USED		301-S8
12	2	CHANNEL IRONS "		301-S8
13	4	FILLER BLOCKS " "	30129	301-S8

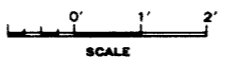
LADDER ASSEMBLAGE

QUANTITY	FIGURE NO	PLAN NO
1	301240	301-S3
1	30126	301-S3
1	30131	301-S3
6	30141	301-S4
2	30154	301-S4
6	1/2" x 1 1/2" SQ HD BOLTS & NUTS	
6	1/2" x 1 " " " " " "	
2	1/2" x 2" LAG SCREWS	

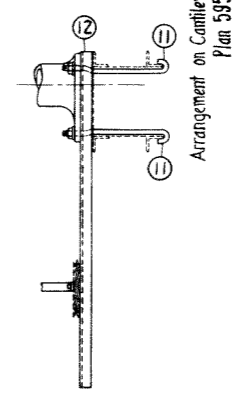
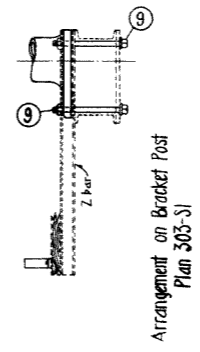
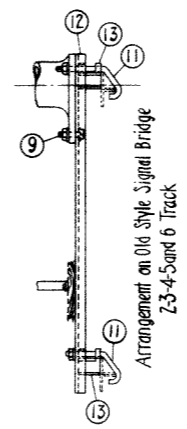
OPERATION AND ROUNDLE TABLE

OPERATION NO	TYPE OF MECHANISM	OPERATION OF ARM	ROUNDLS
1	ELECTRIC	3 POSITION 0° 45° 90°	R-Y-G
2	"	2 " 0° 10 45°	R-Y--1 SHEET IRON DISC

R-RED Y-YELLOW G-GREEN



Arrangement on Standard Signal Bridge
2-3-4-5-6 and 8 Track



NOTE:-
When ordering Electric Motor Signals specify the voltage and whether alternating or direct current is to be used, if alternating specify the frequency.
When ordering signal complete, give plan, assemblage and operation numbers.
Two (2) inches maximum variation allowed either way on total height of mast.
When no detail reference is shown, the Manufacturer's standard apparatus, if approved by the Purchaser, shall be furnished.

304-S3
STANDARD
POWER OPERATED AUTOMATIC
BLOCK SIGNAL
PHILA., JULY 30, 1918.

Correct *[Signature]* Approved *[Signature]*
Signal Engineer Engineer M. W.

Redrawn and Revised July 30, 1918.