

N. S. S.

The Pennsylvania Railroad

EASTERN REGION

Eastern Pennsylvania Division

MIDDLE DIVISION

Time Table No. 25

In effect 6.01 A. M., Sunday, April 25, 1937

FOR THE GOVERNMENT OF EMPLOYEES ONLY

EASTERN STANDARD TIME

W. C. HIGGINBOTTOM,
General Manager.

P. E. FEUCHT,
Supt. Pass. Transportation.

H. W. JONES,
General Superintendent,

A. F. McINTYRE,
Supt. Freight Transportation.

E. C. GEGENHEIMER,
Superintendent.

Original timetable from the collection of Pat McKinney

scanned by Rob Schoenberg -- r08sch@gmail.com

<http://PRR.Railfan.net>

2024

The Pennsylvania Railroad

EASTERN REGION

Eastern Pennsylvania Division

MIDDLE DIVISION

Time Table No. 25

In effect 6.01 A. M., Sunday, April 25, 1937

FOR THE GOVERNMENT OF EMPLOYEES ONLY

EASTERN STANDARD TIME

W. C. HIGGINBOTTOM,
General Manager.

P. E. FEUCHT,
Supt. Pass. Transportation.

H. W. JONES,
General Superintendent.

A. F. McINTYRE,
Supt. Freight Transportation.

E. C. GEGENHEIMER,
Superintendent.

INDEX

	PAGES
Westward—Main Line.....	10 to 19
Eastward—Main Line.....	20 to 29
Holidaysburg & Petersburg Branch	33
Morrison's Cove Branch	33
Martinsburg Branch.....	33
Bedford and Mt. Dallas Branches.....	30 to 31
Clearfield Branch	32
Bald Eagle and Bellefonte Branches.....	34 to 35
Lewistown and Milroy Branches.....	36 to 37
Additional Stops and Flag Stations	44
Air Brake	101
Arranged Freight Train Service.....	40 to 43
Block System, Manual.....	80
Block System, Controlled Manual.....	82 and 110
Block System, Automatic.....	82
Block System, Interlocking Rules.....	86
Block Signal Rules.....	79
Block Stations—Unattended	82
Bulletin Boards	52
Cab Signal Rules	83
Company Surgeons	99
Distances	3
Emergency Whistle and Horn Signals	49
Employee's Register.....	96
Engines—Moving with Main or Side Rods, Disconnected ...	75
Engines—Moving Dead	76
Engine and Other Equipment Restrictions.....	90
Engine Whistle Signals	47
Extra Stops by Passenger Trains	44
First Aid Boxes.....	100
General Orders.....	53
Grade Signals.....	86
Highway Crossing Protection.....	66
Hospitals	100
Hot Boxes on Passenger Trains	109
Icing Station—Huntingdon.....	108
Inspection of Passing Trains	112
Letters and Characters.....	46
Locomotive Cranes, Derricks, Steam Shovels, etc.....	101
Miscellaneous	101
Movement by Train Orders.....	66
Movement of Trains.....	57
Personal Injuries	98
Qualification Record.....	114
Stations: Passenger, Block and Interlocking.....	3
Sidings—Capacity of.....	3
Signal Rules	77
Signal Aspects.....	77
Speed Restrictions	68
Speed Table	68
Starting Trains	105
Superiority of Trains.....	52
Symbols.....	46
Telephones — Use of.....	100
Ticket Offices, Opening and Closing.....	45
Track Assignments	55
Track Cars, etc.....	88
Trains Wait for Connection.....	44
U. S. Mail Work	38
Yards and Yard Instructions.....	67

Interlocking Station & Plant	Interlocking Plant	Block Station	Dist. between Stations	Dist. from Harrisburg	STATIONS	Sidings assigned direc'n Car capacity 45 ft. cars		
						E	W	Both
I					HARRISBURG (Phila. Div.)			
I		B	5.3	5.3	ROCKVILLE			
I		B	3.3	8.6	BANKS			
			1.1	9.7	FERDIX			
			1.0	10.7	COVE			
			2.6	13.3	KINKORA HEIGHTS			
I		B	1.0	14.3	VIEW			
			0.5	14.8	DUNCANNON			
			1.1	15.9	JUNIATA BRIDGE			
			2.1	18.0	AQUEDUCT			
			1.8	19.8	LOSH'S RUN			
			1.4	21.2	IBOQUOIS			
			1.7	22.9	BAILEY			
			4.5	27.4	NEWPORT			
I		B	1.4	28.8	PORT			
			1.9	30.7	OLD FERRY			
			2.0	32.7	MILLERSTOWN			
			5.0	37.7	THOMPSONTOWN			
			3.1	40.8	VANDYKE			
			2.2	43.0	TUSCARORA			
			1.1	44.1	MEXICO			
			2.1	46.2	PORT ROYAL			
I		B	2.8	49.0	MIFFLIN			
			1.6	50.6	LAUVER			
			1.0	51.6	DENHOLM			
I		B	0.8	52.4	WALL			
			3.5	55.9	HAWSTONE			
			1.6	57.5	SHAWNEE			
			3.1	60.6	LEWISTOWN			
I		B	1.2	61.8	LEWIS			
			2.6	64.4	GRANVILLE			
			3.9	68.3	LONGFELLOW			
			1.2	69.5	HORNINGFORD			
			3.0	72.5	McVEYTOWN			
			4.2	76.7	RYDE			
			2.1	78.8	VINEYARD			
			3.7	82.5	NEWTON HAMILTON			
			2.6	85.1	MOUNT UNION			
I		B	1.0	86.1	JACKS			
			2.3	88.4	MAPLETON			
			3.2	91.6	MILL CREEK			
			3.2	94.8	ARDENHEIM			
I		B	2.2	97.0	HUNTINGDON			
	P		2.4	99.4	DEER			
			1.8	101.2	WARRIOR RIDGE			
			2.1	103.3	PETERSBURG			
			3.3	106.6	BARREE			
	P		1.0	107.6	TUNNEL			
I		B	1.2	108.8	SPRUCE			
			0.4	109.2	SPRUCE CREEK			
			1.6	110.8	UNION FURNACE			
			3.3	114.1	BIRMINGHAM			
I		B	1.5	115.6	FORGE			
			1.0	116.6	TYRONE			
I		B	1.2	117.8	GRAZIER			
			2.6	120.4	TIPTON			
			3.6	124.0	BELLWOOD			
I		B	0.7	124.7	BELL			
I		B	2.1	126.8	ANTIS			
			1.3	128.1	EAST ALTOONA			
I			2.1	130.2	RO			
			0.6	130.8	ALTOONA			
I		B	0.8	131.1	JK			
I		B	0.6	131.7	BO			

I—Interlocking Station and Plant.

P—Interlocking Plant.

B—Block Station.

HOLLIDAYSBURG AND PETERSBURG BRANCH

Interlocking Station & Plant	Interlocking Plant	Block Station	Dist. between Stations	Dist. from Petersburg	STATIONS	Sidings assigned direc'n Car capacity 45 ft. cars		
						E	W	Both
					PETERSBURG			
		†B	0.3	0.3	PG	82	84†E	
			2.7	3.0	NEFF			
			2.0	5.0	ALEXANDRIA			
		†B	1.2	6.2	ALFARATA	87	88†W	
			0.9	7.1	WATER STREET			
			1.8	8.9	GOODMAN			
			1.7	10.6	BLAIRFOUR			
			0.7	11.3	MOUNT ETNA			
			2.7	14.0	COVEDALE			
		†B	1.1	15.1	CLOVER CREEK JCT. KZ			
			2.2	17.3	WILLIAMSBURG			
		†B	2.0	19.3	GANISTER SJ	79†E		
			1.2	20.5	POINT VIEW			
			1.9	22.4	FLOWING SPRING			
			0.4	22.8	CANOE CREEK JCT.			
			1.2	24.0	HORRELL	84	84	
		†B	4.5	28.5	FRANKSTOWN F			
		†B	2.5	31.0	JCT. MORRISON'S CV. BR. W			
			0.3	31.3	HOLLIDAYSBURG			
I		B	1.1	32.4	NEW PRtg. JC. WYE			
			8.2	35.6	ELDORADO			
I	P	B	3.0	38.6	JK			
			0.3	38.9	ALTOONA			

† Connected at one end only as indicated by letter used in connection with this character.

NOTE—Unattended Block Stations controlled by open Block Stations.

†PG	Unattended	Controlled by Wye.
†AF	Unattended	Controlled by Wye.
†KZ	Unattended	Controlled by Wye.
†SJ	Unattended	Controlled by Wye.
†F	Unattended	Controlled by Wye.
†W	Unattended	Controlled by Wye.

MORRISON'S COVE BRANCH

Interlocking Station & Plant	Interlocking Plant	Block Station	Dist. between Stations	Dist. from Henrietta	STATIONS	Sidings assigned direc'n Car capacity 45 ft. cars		
						N	S	Both
					HENRIETTA			
			3.1	3.1	CURRY			
		†B	2.5	5.6	MARTINSBURG JCT. MJ			
			1.5	7.1	PECK			
			2.7	9.8	ROARING SPRING			7
			2.1	11.9	McKEE			
		†B	0.9	12.8	BROOKES MILLS BM			
		†B	6.4	19.2	JCT. HOLL. & PBG. BR. W			

Block information received at MJ covers movement to Curry and return unless otherwise specified

NOTE—Unattended Block Stations controlled by open Block Stations.

†W	Unattended	Controlled by Wye
†BM	Unattended	Controlled by Wye.
†MJ	Unattended	Controlled by Wye.

Interlocking Station & Plant	Interlocking Plant	Block Station	Dist. between Stations	Dist. from Martinsburg	STATIONS	Sidings assigned direc'n Car capacity 45 ft. cars		
						E	W	Both
		†B	0.7	0.7	MARTINSBURG MARTINSBURG JCT. MJ			20

The block on Martinsburg Branch includes both legs of the Y. Block information received at MJ covers movement to Martinsburg and return unless otherwise specified.

NOTE—Unattended Block Stations controlled by open Block Stations.

†MJ	Unattended	Controlled by Wye.
-----	------------	--------------------

MT. DALLAS BRANCH

Interlocking Station & Plant	Interlocking Plant	Block Station	Dist. between Stations	Dist. from D. C. Jct.	STATIONS	Sidings assigned direc'n Car capacity 45 ft. cars		
						N	S	Both
		†B			DUNNINGS CREEK JCT. DC			
			0.5	0.5	CLIFFS			
			3.1	3.6	LUTZVILLE			7
			1.6	5.2	ASHCOM			
		†B	1.7	6.9	MT. DALLAS MD			

NOTE—Unattended Block Stations controlled by open Block Stations.

†DC	Unattended	Controlled by Wye.
-----	------------	--------------------

†MD	Unattended	Controlled by Wye.
-----	------------	--------------------

BELLWOOD BRANCH

Interlocking Station & Plant	Interlocking Plant	Block Station	Dist. between Stations	Dist. from Bellwood	STATIONS	Sidings assigned direc'n Car capacity 45 ft. cars		
						N	S	Both
		†B			BELLWOOD BW			
		†B	1.2	1.2	YM			
		†B	10.4	11.6	BLANDBURG (Stroud Jct.) MR			
			1.7	13.3	MOUNTAINDALE			
			1.2	14.5	FALLEN TIMBER JCT.			
			0.5	15.0	GLASGOW			136
			2.9	17.9	UTAHVILLE			
			1.6	19.5	HEVERLY			
		†B	2.3	21.8	COALPORT (Railroad St.) CO			
			0.6	22.4	BLAIN CITY			
		†B	1.3	23.7	VG			
			0.1	23.8	PINE RUN JCT.			
			0.3	24.1	IRVONA (Pittsburgh Div.)			

NOTE—Unattended Block Stations controlled by open Block Stations.

†BW	Unattended	Controlled by Bell.
-----	------------	---------------------

†YM	Unattended	Controlled by Bell.
-----	------------	---------------------

†MR	Unattended	Controlled by Bell.
-----	------------	---------------------

†CO	Unattended	Controlled by Bell.
-----	------------	---------------------

†VG	Unattended	Controlled by Bell.
-----	------------	---------------------

Interlocking Station & Plant	Interlocking Plant	Block Station	Dist. between Stations	Dist. from Brookes Mills	STATIONS	Sidings assigned direc'n Car capacity 45 ft. cars		
						N	S	Both
		†B	1.4	1.4	BROOKES MILLS	BM		25
		†B	4.6	6.0	EAST FREEDOM	CB		
			1.5	7.5	CLAYSBURG			48
			1.6	9.1	SPROUL			
		†B	4.2	13.3	QUEEN			
			2.3	15.6	IMLER	IM		19
			2.4	18.0	OSTERBURG			
			2.2	20.2	REYNOLDSDALE			
		†B	1.8	22.0	FISHERTOWN			
			0.6	22.6	CESSNA PASSING SDG.	CS		37†S
			4.8	27.4	CESSNA			
			2.5	29.9	YOUNTS			
		†B	0.5	30.4	CHALYBEATE			
		†B	1.1	31.5	DUNNINGS CREEK JCT.	DC		
			2.9	34.4	BEDFORD	BD		
			2.0	36.4	WOLFSBURG			
		†B	2.9	39.3	NAPIER			
			0.3	39.8	MC			
		†B	5.0	44.6	MANN'S CHOICE			44
			1.5	46.1	BUFFALO MILLS	BU		52
			2.2	48.3	BARD			
		†B	2.5	50.8	MADLEY			
			3.7	54.5	FOSSILVILLE	FO		40†N
			0.8	55.3	HYNDMAN			
		†B	5.4	60.7	BARCLAY PASSG SDG.			45†N
		†B	1.2	61.9	SL			
			6.5	68.4	STATE LINE			
					CUMBERLAND (W. M. Ry.)			

† Connected at one end only as indicated by letter used in connection with this character.

NOTE.—Unattended Block Stations controlled by open Block Stations.

†BM	Unattended	Controlled by Wye.
†CB	Unattended	Controlled by Wye.
†IM	Unattended	Controlled by Wye.
†CS	Unattended	Controlled by Wye.
†DC	Unattended	Controlled by Wye.
†BD	Unattended	Controlled by Wye.
†MC	Unattended	Controlled by Wye.
†BU	Unattended	Controlled by Wye.
†FO	Unattended	Controlled by Wye.
†SL	Unattended	Controlled by Wye.

Interlocking Station & Plant	Interlocking Plant	Block Station	Dist. between Stations	Dist. from Grampian	STATIONS	Sidings assigned direct'n Car Capacity 45 ft cars		
						N	S	Both
					GRAMPIAN			
		†B	0.1	0.1	GRAM			
			1.5	1.6	STRONACH			
		†B	3.8	5.4	CURWENSVILLE			17
		†B	6.6	12.0	CLEARFIELD			
		†B	6.2	18.2	WOODLAND			29
			2.4	20.6	BIGLER			18
			2.5	23.1	WALLACETON			33
		†B	2.2	25.3	BLUE BALL			
			1.8	27.1	SANFORD JUNCTION			
I			1.6	28.7	N. Y. C. R. R. TOWER. (*)			
			0.5	29.2	PHILIPSBURG			
		†B	2.4	31.7	MAPLE			
		B	1.6	33.3	MILLS			
			0.4	33.7	OSCEOLA MILLS			
			3.3	37.0	RETORT			
			0.7	37.7	SANDY RIDGE			
		†B	1.8	39.5	SUMMIT	75	75	
			9.9	49.4	VAIL			
I		B	1.6	51.0	PARK			
			1.5	52.5	TYRONE			
		B	0.2	52.7	WILSON			

NOTE—Block Stations are open continuously except—
Unattended Block Stations controlled by open Block Stations.

(*) No Signalman on duty. Signals will be set normally for movement of P. R. R. trains. If a train is stopped by signal the Conductor or Engineman must immediately communicate with Block Operator in control of the block.

†Sum't	Unattended	Controlled by Mills. When Mills is unattended, controlled by Park.
Mills	Unattended DAILY 4.30A - 8.30P SUNDAY 8.30 P - 4.30A	Controlled by Park.
†Maple	Unattended	Controlled by Mills. When Mills is unattended, controlled by Park.
†Ball	Unattended	Controlled by Mills. When Mills is unattended, controlled by Park.
†Land	Unattended	Controlled by Mills. When Mills is unattended, controlled by Park.
†Field	Unattended	Controlled by Mills. When Mills is unattended, controlled by Park.
†CUR	Unattended	Controlled by Mills. When Mills is unattended, controlled by Park.
†Gram	Unattended	Controlled by Mills. When Mills is unattended, controlled by Park.

MOSHANNON BRANCH

Interlocking Station & Plant	Interlocking Plant	Block Station	Dist. between Stations	Distance from Osceola Mills	STATIONS	Sidings assigned direc'n Car capacity 45 ft. cars		
						N	S	Both
		B	0.4	0.4	OSCEOLA MILLS.....			
		†B	2.1	2.5	MILLS.....			
			2.5	5.0	COAL RUN JUNCTION.....	COAL		
			1.1	6.1	GOSS RUN JUNCTION.....			
			1.2	7.3	HOUTZDALE.....			
			0.9	8.2	AMESVILLE JUNCTION.....			
		†B	1.1	9.3	EXCELSIOR.....			40
			0.3	9.6	RAMEY.....	RAM		14
			2.4	12.0	MADERA JUNCTION.....			28
			1.5	13.5	SMOKE RUN.....			42
			1.1	14.6	BANIAN JUNCTION.....			
			0.4	15.0	MADERA.....			
			6.4	21.4	BETZ JCT. (N. Y. C. R. R. Crossing).....			
					McCARTNEY.....			

NOTE—Unattended Block Stations controlled by open Block Stations.

Mills	Unattended DAILY 4.30A - 8.30P SUNDAY 8.30P - 4.30A	Controlled by Park.
†Coal	Unattended	Controlled by Mills. When Mills is unattended, controlled by Park.
†RAM	Unattended	Controlled by Mills. When Mills is unattended, controlled by Park.

LEWISTOWN AND MILROY BRANCHES

Interlocking Station & Plant	Interlocking Plant	Block Station	Distance between Stations	Distance from Lewistown	STATIONS	Sidings assigned direc'n Car capacity 54 ft. cars		
						W	E	Both
			1.4	12.2	MILROY.....			25
			0.8	10.8	NAGINEY.....			
			0.6	10.0	SHRADERS.....			
		†B	2.9	9.4	HONEY CREEK.....			
			0.3	6.5	REEDSVILLE.....	DR		10
			0.1	6.2	K. V. R. R. JUNCTION.....			
		†B	1.7	6.1	MANN WATER STA.			
			0.8	4.4	YEAGERTOWN.....			58
		†B	0.3	3.6	BURNHAM.....	HM		
			0.5	3.3	BURNHAM PAS'G SID.			42
			0.4	1.5	WALNUT STREET.....			
		†B	0.1	1.1	MY.....			
			0.2	1.0	CHESTNUT STREET.....			19
		†B	0.8	0.8	MAIN STREET.....			
					LEWISTOWN.....	KA		

Note.—unattended Block Stations controlled by open Block Stations.

†DB	Unattended	Controlled by Lewis.
†HM	Unattended	Controlled by Lewis.
†MY	Unattended	Controlled by Lewis.
†KA	Unattended	Controlled by Lewis.

Interlocking Station & Plant	Interlocking Plant	Block Station	Dist. between Stations	Dist. from Tyrone	STATIONS	Sidings assigned direct'n Car capacity 45 ft. cars		
						E	W	Both
I		B	1.4 1.5	54.2 52.8	LOCK HAVEN (Wmsport Div.) POST PASSING SIDING			141
I		B	1.0 4.4 1.6 3.4	51.3 50.3 45.9 44.3	MILL HALL HALL BEECH CREEK EAGLEVILLE			101 107
I		B	1.2 3.1 0.7	40.9 39.7 36.6	WOOD HOWARD MT. EAGLE			93
	P		0.7 0.8 3.6	35.9 35.2 34.4	SAND HOLTERS CURTIN			
I		B	1.3 3.6 4.5	30.8 29.5 25.9	MILESBURG SNOW SHOE INT. UNIONVILLE	101	115	
			4.2 3.4	21.4 17.2	JULIAN MARTHA			114 104
I		B	3.2 2.5 2.0	13.8 10.6 8.1	PORT MATILDA HANNAH DIX			129 60†E
I		B	1.1 1.9 1.6	6.1 5.0 3.1	EAGLE BALD EAGLE VAIL			115 160
I		B	1.5	1.5	PARK TYRONE			

† Connected at one end only as indicated by letter used in connection with this character.

Note—Block Stations are open continuously except—

Hall—Closed 12.01 A. M., Monday to 12.01 A. M., Tuesday.

SNOW SHOE BRANCH

Interlocking Station & Plant	Interlocking Plant	Block Station	Dist. between Stations	Dist. from Snow Shoe Int.	STATIONS	Sidings assigned direct'n Car capacity 45 ft. cars		
						E	W	Both
					SNOW SHOE INT.			
			2.5	2.5	SCHOOL HOUSE			
			1.3	3.8	GUM STUMP			20
			3.4	7.2	CLARKS			
			8.5	10.7	RHODES			20
	†B		6.6	17.3	SNOW SHOE SNOW			

Note—Unattended Block Stations controlled by open Block Stations.

†Snow	Unattended	Controlled by Milesburg.
-------	------------	--------------------------

BELLEFONTE BRANCH

Interlocking Station & Plant	Interlocking Plant	Block Station	Dist. between Stations	Dist. from Pleasant Gap	STATIONS	Sidings assigned direct'n Car capacity 45 ft. cars		
						E	W	Both
					PLEASANT GAP (Wmsprt Div.)			9
		†B	2.9	2.9	TITAN			
		†B	0.5	3.4	MATCH			
		†B	0.1	3.6	BELLEFONTE FONT			
I		B	2.6	6.2	MILESBURG			

NOTE—Block Stations are open continuously except—

Unattended Block Stations controlled by open Block Stations.

†Titan	Unattended	Controlled by Milesburg.
†Match	Unattended	Controlled by Milesburg.
†Font	Unattended	Controlled by Milesburg.

STATIONS	FIRST CLASS			
	39	067	085	
	DAILY	DAILY	DAILY	
Leave	A. M.	A. M.	A. M.	
HARRISBURG (Phila. Div.)	\$ 12.02	\$ 12.15	\$ 1.10	
ROCKVILLE	12.12	12.24	1.21	
MARYSVILLE				
BANKS	12.17	12.29	1.26	
PERDIX				
COVE				
KINKORA HEIGHTS				
VIEW	12.24	12.36	1.33	
DUNCANNON				
JUNIATA BRIDGE				
AQUEDUCT				
LOSH'S RUN				
IROQUOIS	12.31	12.43	1.40	
BAILEY				
NEWPORT				
PORT	12.38	12.50	1.47	
OLD FERRY				
MILLERSTOWN				
THOMPSONTOWN				
VANDYKE	12.49	1.01	1.58	
TUSCARORA				
MEXICO				
PORT ROYAL				
MIFFLIN	12.57	1.09	2.06	
DENHOLM			2.14	
WALL	1.01	1.13	2.14	
HAWSTONE				
SHAWNEE				
LEWISTOWN				
LEWIS	1.11	1.23	2.24	
GRANVILLE				
LONGFELLOW	1.17	1.29	2.30	
HORNINGFORD				
MOVEYTOWN				
RYDE				
VINEYARD	1.27	1.39	2.40	
NEWTON HAMILTON				
MOUNT UNION				
JACKS	1.34	1.46	2.48	
MAPLETON				
MILL CREEK				
ARDENHEIM				
HUNTINGDON	1.45	1.57	2.59	
WARRIOR RIDGE				
PETERSBURG	1.52	2.03	3.06	
BARRE				
SPRUCE	1.58	2.09	3.12	
SPRUCE CREEK				
UNION FURNACE				
BIRMINGHAM				
FORGE	2.08	2.19	3.23	
TYRONE				
GRAZIER	2.11	2.22	3.26	
TIPTON				
BELLWOOD				
BELL	2.22	2.29	3.37	
EAST ALTOONA				
ALTOONA	\$ 2.33	\$ 2.40	\$ 3.47	
	2.37	2.44	3.57	
BO	2.40	2.47	4.00	
Arrive	A. M.	A. M.	A. M.	
	39	67	85	

FIRST CLASS

	37	61	51	63	
	DAILY	DAILY	DAILY	DAILY	
	A. M.	A. M.	A. M.	A. M.	
	\$ 1.36	\$ 2.36	\$ 2.47	\$ 3.10	
	1.46	2.47	2.57	3.20	
	1.51	2.52	3.02	3.25	
	1.59	2.59	3.09	3.32	
	2.06	3.06	3.16	3.39	
	2.14	3.14	3.24	3.47	
	2.26	3.25	3.35	3.58	
	2.35	3.33	3.43	4.07	
	Ⓐ 2.43	Ⓐ 3.41	3.47	4.11	
	2.54	3.52	3.58	4.22	
	3.02	3.58	4.04	4.28	
	3.13	4.09	4.14	4.38	
	3.21	4.17	4.21	4.45	
	3.33	4.28	4.33	4.56	
	3.40	4.35	4.40	5.03	
	3.46	4.41	4.46	5.09	
	3.56	4.51	4.56	5.19	
	3.59	4.54	4.59	5.22	
	4.10	5.03	5.08	5.31	
	\$ 4.21	\$ 5.13	\$ 5.18	\$ 5.41	
	4.31	5.17	5.23	5.46	
	4.34	5.20	5.26	5.49	
	A. M.	A. M.	A. M.	A. M.	
	37	61	51	63	

STATIONS	FIRST CLASS			
	661	●1	●11	
	DAILY	DAILY	DAILY	
Leave	A. M.	A. M.	A. M.	
HARRISBURG (Phila. Div.)		E 3.14	S 3.50	
ROCKVILLE		3.24	4.00	
MARYSVILLE				
BANKS		3.29	4.05	
PERDIX				
COVE				
KINKORA HEIGHTS				
VIEW		3.36	4.12	
DUNCANNON				
JUNIATA BRIDGE				
AQUEDUCT				
LOSH'S RUN				
IROQUOIS		3.43	4.19	
BAILEY				
NEWPORT				
PORT		3.51	4.27	
OLD FERRY				
MILLERSTOWN				
THOMPSONTOWN				
VANDYKE		4.02	4.38	
TUSCARORA				
MEXICO				
PORT ROYAL				
MIFFLIN		4.10	4.46	
DENHOLM		Ⓐ 4.18	Ⓐ 4.54	
WALL				
HAWSTONE				
SHAWNEE				
LEWISTOWN				
LEWIS		4.30	5.05	
GRANVILLE				
LONGFELLOW		4.36	5.11	
HORNINGFORD				
McVEYTOWN				
RYDE				
VINEYARD		4.47	5.22	
NEWTON HAMILTON				
MOUNT UNION				
JACKS		4.53	5.30	
MAPLETON				
MILL CREEK				
ARDENHEIM				
HUNTINGDON		Z 5.07	Z 5.41	
WARRIOR RIDGE				
PETERSBURG		5.14	5.48	
BARREE				
SPRUCE		5.20	5.54	
SPRUCE CREEK				
UNION FURNACE				
BIRMINGHAM				
FORGE		5.30	6.04	
TYRONE		E 5.35	Q 6.07	
GRAZIER		5.38	6.10	
TIPTON				
BELLWOOD				
BELL		5.47	6.18	
EAST ALTOONA				
ALTOONA	S 5.50	E 5.56	E 6.27	
		6.03	6.32	
BO	5.53	6.06	6.35	
Arrive	A. M.	A. M.	A. M.	
	661	1	11	

FIRST CLASS

	● 667 DAILY EX. SUN.	637 SUN. ONLY	623 DAILY	623 DAILY EX. SUN.	
	A. M.	A. M.	A. M.	A. M.	
			\$ 4.20		
			4.30		
			\$ 4.34		
			4.37		
			4.44		
			\$ 4.48		
			4.57		
			\$ 5.06		
			5.10		
			\$ 5.14		
			F 5.21		
			F 5.27		
			\$ 5.33		
			\$ 5.40		
			\$ 5.47		
			5.50		
			F 5.55		
			\$ 6.13		
			6.16		
			F 6.22		
			6.28		
			\$ 6.34		
			F 6.41		
			\$ 6.49		
			\$ 6.59		
			7.02		
			\$ 7.08		
			\$ 7.14		
			F 7.19		
			\$ 7.33		
			F 7.41		
			\$ 7.47		
			\$ 7.53		
			7.58		
			\$ 7.59		
			\$ 8.07		
			8.10		
			\$ 8.17		
			8.21		
			\$ 8.27		
			\$ 8.38		
			8.35		
			\$ 8.40		
			\$ 8.45		
	\$ 6.55	\$ 7.00		\$ 9.30	
	6.58	7.03		9.33	
	A. M.	A. M.	A. M.	A. M.	
	667	637	623	623	

STATIONS	FIRST CLASS			
	13	15	25	
	DAILY	DAILY	DAILY	
Leave	A. M.	A. M.	P. M.	
HARRISBURG (Phila. Div.)	\$ 6.53	\$ 11.20	\$ 12.26	
ROCKVILLE	7.03	11.30	12.36	
MARYSVILLE				
BANKS	7.08	11.35	12.41	
PERDIX				
COVE				
KINKORA HEIGHTS				
VIEW	7.15	11.42	12.49	
DUNCANNON	\$ 7.17	\$ 11.43		
JUNIATA BRIDGE				
AQUEDUCT				
LOSH'S RUN				
IROQUOIS	7.26	11.51	12.56	
BAILEY				
NEWPORT	\$ 7.34	\$ 11.59		
PORT	7.37	12.02	1.03	
OLD FERRY				
MILLERSTOWN				
THOMPSONTOWN				
VANDYKE	7.49	12.13	1.13	
TUSCARORA				
MEXICO				
PORT ROYAL		G 12.18		
MIFFLIN	\$ 8.00	\$ 12.23	1.21	
DENHOLM	④ 8.09	④ 12.33	④ 1.29	
WALL				
HAWSTONE				
SHAWNEE				
LEWISTOWN	\$ 8.23	\$ 12.45		
LEWIS	8.26	12.48	1.40	
GRANVILLE				
LONGFELLOW	8.33	12.55	1.46	
HORNINGFORD				
McVEYTOWN				
RYDE				
VINEYARD	8.44	1.06	1.56	
NEWTON HAMILTON				
MOUNT UNION	\$ 8.54	\$ 1.15		
JACKS	8.57	1.18	2.04	
MAPLETON				
MILL CREEK				
ARDENHEIM				
HUNTINGDON	\$ 9.13	\$ 1.32	2.15	
WARRIOR RIDGE				
PETERSBURG	9.23	1.41	2.22	
BARRE				
SPRUCE	9.29	1.47	2.28	
SPRUCE CREEK				
UNION FURNACE				
BIRMINGHAM				
FORGE	9.39	1.57	2.38	
TYRONE	\$ 9.42	\$ 2.00	\$ 2.41	
GRAZIER	9.46	2.04	2.46	
TIPTON				
BELLWOOD		\$ 2.13		
BELL	9.56	2.16	2.56	
EAST ALTOONA				
ALTOONA	\$ 10.07	\$ 2.27	\$ 3.07	
	10.19	2.35	3.12	
BO	10.22	2.38	3.15	
Arrive	A. M.	P. M.	P. M.	
	13	15	25	

FIRST CLASS

792 SUN. ONLY	511 DAILY	21 DAILY	75 DAILY	
P. M.	P. M.	P. M.	P. M.	
		\$ 2.47	\$ 3.15	
		2.57	3.25	
		3.02	3.30	
		3.09	3.37	
		\$ 3.10		
		3.18	3.44	
		\$ 3.25		
		3.28	3.51	
		3.39	4.02	
		\$ 3.48	4.10	
		④ 3.57	4.14	
		\$ 4.08		
		4.11	4.25	
		4.17	4.32	
		4.28	4.43	
		\$ 4.36		
		4.39	4.51	
		\$ 4.51	5.02	
		4.59	5.09	
		5.06	5.15	
	\$ 3.56	\$ 5.16	\$ 5.25	
	4.00	\$ 5.20	\$ 5.28	
		5.25	5.32	
		\$ 5.34		
	4.09	5.36	5.42	
	\$ 4.19	\$ 5.45	\$ 5.50	
	4.27	5.53	5.55	
	4.30	6.01	5.58	
P. M.	P. M.	P. M.	P. M.	
792	511	21	75	

WITHDRAWN 7-11-37

STATIONS	Leave	FIRST CLASS		
		*790	5	663
		DAILY EX. SUN. P. M.	DAILY P. M.	DAILY P. M.
HARRISBURG (Phila. Div)			\$ 5.22	\$ 5.30
ROCKVILLE			5.32	5.40
MARYSVILLE				\$ 5.43
BANKS			5.37	5.46
PERDIX				\$ 5.48
COVE				\$ 5.51
KINKORA HEIGHTS				F 5.54
VIEW			5.44	5.55
DUNCANNON				\$ 5.56
JUNIATA BRIDGE				\$ 5.59
AQUEDUCT				B 6.02
LOSH'S RUN				F 6.05
IROQUOIS			5.51	
BAILEY				
NEWPORT				\$ 6.15
PORT			5.59	6.17
OLD FERRY				
MILLERSTOWN				\$ 6.22
THOMPSONTOWN				F 6.29
VANDYKE			6.10	F 6.33
TUSCARORA				F 6.37
MEXICO				
PORT ROYAL				\$ 6.42
MIFFLIN			6.18	\$ 6.46
DENHOLM				\$ 6.50
WALL			6.22	6.52
HAWSTONE				\$ 6.56
SHAWNEE				
LEWISTOWN		\$ 6.34		\$ 7.03
LEWIS		6.37		7.12
GRANVILLE				
LONGFELLOW			6.44	7.18
HORNINGFORD				
McVEYTOWN				\$ 7.22
RYDE				F 7.27
VINEYARD			6.55	F 7.30
NEWTON HAMILTON				\$ 7.34
MOUNT UNION				\$ 7.39
JACKS			7.03	7.41
MAPLETON				\$ 7.44
MILL CREEK				
ARDENHEIM				
HUNTINGDON		\$ 7.17		\$ 7.55
WARRIOR RIDGE				F 8.01
PETERSBURG			7.27	\$ 8.05
BARREE				F 8.11
SPRUCE			7.33	8.15
SPRUCE CREEK				\$ 8.16
UNION FURNACE				
BIRMINGHAM				F 8.22
FORGE			7.43	8.25
TYRONE	\$ 7.40			\$ 8.28
GRAZIER	7.44	7.46		8.32
TIPTON				
BELLWOOD				\$ 8.37
BELL		7.55	7.57	8.39
EAST ALTOONA				\$ 8.44
ALTOONA	\$ 8.05	\$ 8.11		\$ 8.50
BO			8.15	
			8.18	
Arrive	P. M.	P. M.	P. M.	
	790	5	663	

FIRST CLASS

	◇79 DAILY	501 DAILY EX. SUN.	◇49 DAILY	◇41 DAILY	
	P. M.	P. M.	P. M.	P. M.	
S			S 7.18	S 7.30	
			7.28	7.40	
			7.33	7.45	
			7.40	7.52	
			7.47	7.59	
			7.55	8.07	
			8.06	8.18	
			8.14	8.26	
			8.18	8.30	
			8.29	8.41	
			8.35	8.47	
			8.45	8.57	
			8.52	9.04	
			9.03	9.16	
			9.10	9.24	
			9.16	9.32	
			9.26	9.43	
			9.29	9.46	
			9.01	9.37	9.55
			S 9.10	S 9.46	S 10.05
				9.50	10.09
			9.53	10.12	
	P. M.	P. M.	P. M.	P. M.	
	79	501	49	41	

WITHDRAWN 7-11-37

STATIONS	FIRST CLASS			
	59	029	069	
	DAILY	DAILY	DAILY	
Leave	P. M.	P. M.	P. M.	
HARRISBURG (Phila. Div.)	\$ 7.46	\$ 7.57	\$ 8.22	
ROCKVILLE	7.56	8.06	8.32	
MARYSVILLE				
BANKS	8.01	8.11	8.37	
PERDIX				
COVE				
KINKORA HEIGHTS				
VIEW	8.08	8.18	8.44	
DUNCANNON				
JUNIATA BRIDGE				
AQUEDUCT				
LOSH'S RUN				
IROQUOIS	8.15	8.25	8.51	
BAILEY				
NEWPORT				
PORT	8.22	8.32	8.58	
OLD FERRY				
MILLERSTOWN				
THOMPSONTOWN				
VANDYKE	8.33	8.43	9.09	
TUSCARORA				
MEXICO				
PORT ROYAL				
MIFFLIN	8.41	8.51	9.17	
DENHOLM				
WALL	8.45	8.55	9.21	
HAWSTONE				
SHAWNEE				
LEWISTOWN			\$ 9.33	
LEWIS	8.55	9.05	9.36	
GRANVILLE				
LONGFELLOW	9.01		9.42	
HORNINGFORD				
McVEYTOWN				
RYDE				
VINEYARD	9.11	9.21	9.52	
NEWTON HAMILTON				
MOUNT UNION				
JACKS	9.18	9.28	9.59	
MAPLETON				
MILL CREEK				
ARDENHEIM				
HUNTINGDON	9.29	9.39	10.10	
WARRIOR RIDGE				
PETERSBURG			10.17	
BARRE				
SPRUCE	9.41	9.50	10.23	
SPRUCE CREEK				
UNION FURNACE				
BIRMINGHAM				
FORGE	9.51	10.00	10.33	
TYRONE				
GRAZIER	9.54	10.03	10.36	
TIPTON				
BELLWOOD				
BELL	10.02	10.11	10.44	
EAST ALTOONA				
ALTOONA	\$ 10.11	\$ 10.20	\$ 10.53	
	10.15	10.24	10.57	
BO	10.18	10.27	11.00	
Arrive	P. M.	P. M.	P. M.	
	59	29	69	

FIRST CLASS

	081	017	023	09	
	DAILY	DAILY	DAILY	DAILY	
	P. M.	P. M.	P. M.	P. M.	
	\$ 8.43	\$ 10.05	\$ 10.13	\$ 11.49	
	8.53	10.15	10.23	11.59	
	8.58	10.20	10.28	12.04	
	9.05	10.27	10.35	12.11	
	9.12	10.34	10.42	12.18	
	9.19	10.42	10.49	12.26	
	9.30	10.53	11.00	12.37	
	9.38	11.01	11.08	12.45	
	9.42	11.05	11.12	12.49	
			\$ 11.24		
	9.52	11.16	11.27	1.01	
	9.58	11.22	11.33	1.07	
	10.08	11.32	11.43	1.18	
	10.15	11.39	11.50	1.25	
	10.26	11.50	\$ 12.04	1.36	
	10.32	11.57	12.13	1.43	
	10.38	12.03	12.19	1.49	
	10.48	12.13	12.29	1.59	
	10.51	12.16	12.32	2.02	
	10.58	12.25	12.42	2.11	
	\$ 11.07	\$ 12.35	\$ 12.53	\$ 2.23	
	11.11	12.40	12.58	2.27	
	11.14	12.43	1.01	2.30	
	P. M.	A. M.	A. M.	A. M.	
	81	17	23	9	

STATIONS	FIRST CLASS			
	022	060	066	
	A. M.	A. M.	A. M.	
HARRISBURG (Phila. Div.)	\$ 3.05	\$ 3.26	\$ 3.48	
ROCKVILLE	2.55	3.16	3.38	
MARYSVILLE				
BANKS	2.50	3.11	3.33	
PERDIX				
COVE				
KINKORA HEIGHTS				
VIEW	2.42	3.03	3.25	
DUNCANNON				
JUNIATA BRIDGE				
AQUEDUCT				
LOSH'S RUN				
IROQUOIS	2.34	2.54	3.18	
BAILEY				
NEWPORT				
PORT	2.26	2.46	3.11	
OLD FERRY				
MILLERSTOWN				
THOMPSONTOWN				
VANDYKE	2.14	2.34	3.00	
TUSCARORA				
MEXICO				
PORT ROYAL				
MIFFLIN	2.03	2.23	2.51	
DENHOLM	Ⓐ 1.55	Ⓐ 2.15	2.47	
WALL				
HAWSTONE				
SHAWNEE				
LEWISTOWN				
LEWIS	1.44	2.03	2.37	
GRANVILLE				
LONGFELLOW	1.38	1.57	2.31	
HORNINGFORD				
McVEYTOWN				
RYDE				
VINEYARD	1.27	1.46	2.21	
NEWTON HAMILTON				
MOUNT UNION				
JACKS	1.20	1.38	2.14	
MAPLETON				
MILL CREEK				
ARDENHEIM				
HUNTINGDON	1.09	1.26	2.03	
WARRIOR RIDGE				
PETERSBURG	1.02	1.19	1.56	
BARREE				
SPRUCE	12.56	1.13	1.50	
SPRUCE CREEK				
UNION FURNACE				
BIRMINGHAM				
FORGE	12.46	1.03	1.40	
TYRONE				
GRAZIER	12.43	1.00	1.37	
TIPTON				
BELLWOOD				
BELL	12.36	12.54	1.31	
EAST ALTOONA				
ALTOONA	12.27	12.46	1.23	
	\$ 12.22	\$ 12.42	\$ 1.19	
BO	12.19	12.39	1.16	
	Leave			
	A. M.	A. M.	A. M.	
	DAILY	DAILY	DAILY	
	28	60	66	

025

FIRST CLASS

	◇36	◇78	◇50	◇38	
	A. M.	A. M.	A. M.	A. M.	
	\$ 4.03	\$ 4.08	\$ 4.23	\$ 4.28	
	3.53	3.58	4.13	4.18	
	3.48	3.53	4.08	4.13	
	3.40	3.45	4.00	4.06	
	3.32	3.38	3.52	3.59	
	3.24	3.30	3.44	3.51	
	3.12	3.19	3.33	3.40	
	3.02	3.10	3.24	3.31	
	2.57	3.06	3.20	3.27	
	2.46	2.55	3.10	3.17	
	2.40	2.49	3.04	3.11	
	2.29	2.38	2.54	3.01	
	2.22	2.31	2.47	2.54	
	2.10	2.20	2.36	2.43	
	2.03	2.13	2.29	2.36	
	1.57	2.07	2.23	2.30	
	1.47	1.57	2.13	2.20	
	1.44	1.54	2.10	2.17	
	1.37	1.48	2.04	2.11	
	1.29	1.40	1.56	2.03	
	\$ 1.25	\$ 1.36	\$ 1.52	\$ 1.59	
	1.22	1.33	1.49	1.56	
	A. M.	A. M.	A. M.	A. M.	
	DAILY	DAILY	DAILY	DAILY	
	36	78	50	38	

STATIONS	FIRST CLASS			
	◇40	◇68	◇28	
	A. M.	A. M.	A. M.	
Arrive				
HARRISBURG (Phila. Div.)	\$ 4.44	\$ 4.59	\$ 5.05	
ROCKVILLE	4.34	4.49	4.55	
MARYSVILLE				
BANKS	4.29	4.44	4.50	
PERDIX				
COVE				
KINKORA HEIGHTS				
VIEW	4.21	4.36	4.42	
DUNCANNON				
JUNIATA BRIDGE				
AQUEDUCT				
LOSH'S RUN				
IROQUOIS	4.14	4.29	4.35	
BAILEY				
NEWPORT				
PORT	4.06	4.21	4.28	
OLD FERRY				
MILLERSTOWN				
THOMPSONTOWN				
VANDYKE	3.54	4.09	4.17	
TUSCARORA				
MEXICO				
PORT ROYAL				
MIFFLIN	3.45	4.00	4.09	
DENHOLM				
WALL	3.41	3.56	4.05	
HAWSTONE				
SHAWNEE				
LEWISTOWN				
LEWIS	3.31	3.46	3.55	
GRANVILLE				
LONGFELLOW	3.25	3.40	3.49	
HORNINGFORD				
McVEYTOWN				
RYDE				
VINEYARD	3.15	3.30	3.39	
NEWTON HAMILTON				
MOUNT UNION				
JACKS	3.08	3.23	3.32	
MAPLETON				
MILL CREEK				
ARDENHEIM				
HUNTINGDON	2.57	3.12	3.21	
WARRIOR RIDGE				
PETERSBURG	2.50	3.05	3.15	
BARRE				
SPRUCE	2.44	2.59	3.09	
SPRUCE CREEK				
UNION FURNACE				
BIRMINGHAM				
FORGE	2.34	2.49	2.59	
TYRONE				
GRAZIER	2.31	2.46	2.56	
TIPTON				
BELLWOOD				
BELL	2.25	2.40	2.50	
EAST ALTOONA				
ALTOONA	2.17	2.32	2.42	
	\$ 2.13	\$ 2.28	\$ 2.38	
BO	2.10	2.25	2.35	
Leave	A. M.	A. M.	A. M.	
	DAILY	DAILY	DAILY	
	40	68	28	
OES				OES

FIRST CLASS

	58	48	30	662	
	A. M.	A. M.	A. M.	A. M.	
	\$ 5.26	\$ 5.46	\$ 6.18	\$ 7.25	
	5.16	5.36	6.08	7.15	
	5.11	5.31	6.03	7.12	
				7.10	
				F 7.07	
				F 7.04	
				F 7.01	
	5.03	5.23	5.56	6.59	
				S 6.58	
				F 6.51	
				F 6.48	
	4.55	5.15	5.49	F 6.43	
				S 6.37	
	4.46	5.07	5.42	6.34	
				S 6.29	
				S 6.21	
	4.34	4.55	5.31	F 6.16	
				F 6.13	
				S 6.08	
	4.24	4.44	5.23	S 6.04	
	4.19	④ 4.36	5.19	F 5.58	
				5.56	
				S 5.52	
				F 5.48	
	4.08	4.26	5.09	S 5.43	
				5.40	
	4.02	4.20			
				S 5.29	
				F 5.23	
	3.52	4.10	4.52		
				S 5.13	
	3.45	4.03	4.45	5.11	
				S 5.08	
	3.34	3.52	4.34	S 4.57	
	3.27	3.45	4.28	S 4.48	
	3.21	3.39	4.22	4.42	
	3.11	3.29	4.12	4.32	
				S 4.30	
	3.08	3.26	4.09	4.27	
				S 4.21	
	3.02	3.20	4.03	4.19	
				S 4.15	
	2.54	3.12	3.55	S 4.10	
	S 2.50	S 3.08	S 3.51		
	2.47	3.05	3.48		
	A. M.	A. M.	A. M.	A. M.	
	DAILY	DAILY	DAILY	DAILY	
	58	48	30	EX. SUN.	
				662	

STATIONS	FIRST CLASS			
	666	42	578	664
	P. M.	A. M.	A. M.	P. M.
Arrive				
HARRISBURG (Phila. Div.)	\$ 1.07	\$ 10.24		\$ 1.07
ROCKVILLE	12.55	10.14		12.55
MARYSVILLE	\$ 12.52			\$ 12.52
BANKS	12.49	10.09		12.49
PERDIX				
COVE	F 12.45			F 12.45
KINKORA HEIGHTS				
VIEW	12.38	10.02		12.38
DUNCANNON	\$ 12.10			\$ 12.10
JUNIATA BRIDGE				
AQUEDUCT				
LOSH'S RUN	\$ 12.03			\$ 12.03
IROQUOIS		9.55		
BAILEY	\$ 11.58			\$ 11.58
NEWPORT	\$ 11.51			\$ 11.51
PORT	11.47	9.47		11.47
OLD FERRY				
MILLERSTOWN	\$ 11.32			\$ 11.32
THOMPSONTOWN	\$ 11.24			\$ 11.24
VANDYKE		9.35		
TUSCARORA				
MEXICO				
PORT ROYAL	\$ 11.09			\$ 11.09
MIFFLIN	\$ 10.48	9.26		\$ 10.48
DENHOLM	\$ 10.42			\$ 10.42
WALL	10.39	9.21		10.39
HAWSTONE	\$ 10.33			\$ 10.33
SHAWNEE				
LEWISTOWN	{ \$ 10.25	\$ 9.10		{ \$ 10.25
LEWIS	\$ 9.55	9.06		\$ 8.55
	9.53			8.53
GRANVILLE				
LONGFELLOW		9.00		
HORNINGFORD				
McVEYTOWN	\$ 9.42			\$ 8.42
RYDE	F 9.35			F 8.35
VINEYARD	F 9.31	8.49		F 8.31
NEWTON HAMILTON	\$ 9.25			\$ 8.25
MOUNT UNION	\$ 9.19	\$ 8.40		\$ 8.19
JACKS	9.15	8.37		8.15
MAPLETON	\$ 9.11			\$ 8.11
MILL CREEK				
ARDENHEIM				
HUNTINGDON	{ \$ 9.01	\$ 8.24		{ \$ 8.00
WARRIOR RIDGE	\$ 8.53			\$ 7.52
PETERSBURG	\$ 8.49	8.14		\$ 7.48
BARREE				
SPRUCE	8.43	8.08		7.40
SPRUCE CREEK	\$ 8.42			\$ 7.39
UNION FURNACE	F 8.38			F 7.35
BIRMINGHAM	F 8.33			F 7.30
FORGE	8.31	7.58		7.28
TYRONE	\$ 8.29	\$ 7.56	\$ 8.08	\$ 7.26
GRAZIER	8.26	7.52	8.02	7.23
TIPTON				
BELLWOOD	\$ 8.20		\$ 7.53	\$ 7.17
BELL	8.18	7.44	7.51	7.15
EAST ALTOONA	\$ 8.13			\$ 7.10
ALTOONA	{ \$ 8.08	7.35	\$ 7.43	{ \$ 7.05
		\$ 7.27		
BO		7.24		
Leave				
	A. M.	A. M.	A. M.	A. M.
	DAILY	DAILY	DAILY	SUN.
	EX. SUN.	EX. SUN.	EX. SUN.	ONLY
	666	42	578	664

065

A. M.

WITHDRAWN 7-11-37

8.47

A. M.
DAILY
EX. SUN.
682

STATIONS	FIRST CLASS			
	2	510	054	
	P. M.	P. M.	P. M.	
HARRISBURG (Phila. Div.)	\$ 12 50		\$ 1.43	
ROCKVILLE	12.40		1.33	
MARYSVILLE				
BANKS	12.41		1.28	
PERDIX				
COVE				
KINKORA HEIGHTS				
VIEW	12.34		1.20	
DUNCANNON				
JUNLATA BRIDGE				
AQUEDUCT				
LOSH'S RUN				
IROQUOIS	12.27		1.13	
BAILEY				
NEWPORT				
PORT	12.19		1.05	
OLD FERRY				
MILLERSTOWN				
THOMPSONTOWN				
VANDYKE	12.08		12.53	
TUSCARORA				
MEXICO				
PORT ROYAL				
MIFFLIN	11.58		12.44	
DENHOLM	④			
WALL	11.50		12.40	
HAWSTONE				
SHAWNEE				
LEWISTOWN	\$ 11.39			
LEWIS	11.35		12.29	
GRANVILLE				
LONGFELLOW	11.29		12.23	
HORNINGFORD				
McVEYTOWN				
RYDE				
VINEYARD	11.19		12.12	
NEWTON HAMILTON				
MOUNT UNION				
JACKS	11.11		12.05	
MAPLETON				
MILL CREEK				
ARDENHEIM				
HUNTINGDON	\$ 10.57		11.54	
WARRIOR RIDGE				
PETERSBURG	10.48		11.47	
BARRE				
SPRUCE	10.42		11.41	
SPRUCE CREEK				
UNION FURNACE				
BIRMINGHAM				
FORGE	10.32		11.31	
TYRONE	\$ 10.29	\$ 12.24		
GRAZIER	10.27	12.20	11.28	
TIPTON				
BELLWOOD				
BELL	10.20	12.13	11.22	
EAST ALTOONA				
ALTOONA	10.12	\$ 12.05	11.14	
	\$ 10.08		\$ 11.10	
BO	10.05		11.07	
Leave	A. M.	P. M.	A. M.	
	DAILY	DAILY	DAILY	
	2	510	54	

045

FIRST CLASS					
056		8	8	44	
P. M.		A. M.	P. M.	P. M.	
	\$ 1.48		\$ 3.28	\$ 4.00	
	1.38		3.17	3.50	
	1.33		3.12	3.45	
	1.26		3.04	3.38	
			\$ 3.03		
	1.19		2.54	3.31	
			\$ 2.45		
	1.12		2.42	3.23	
	1.01		2.28	3.12	
	12.52		\$ 2.18	3.02	
			Ⓐ 2.06	Ⓐ 2.54	
	12.48				
			\$ 1.54	\$ 2.43	
	12.38		1.48	2.39	
	12.32		1.42	2.33	
	12.22		1.31	2.23	
			\$ 1.23		
	12.15		1.20	2.16	
	12.04		\$ 1.06	\$ 2.03	
	11.57		\$ 12.52	1.54	
	11.51		12.44	1.48	
	11.41		12.33	1.38	
			\$ 12.31		
	11.38		12.26	1.35	
			\$ 12.19		
	11.31		12.16	1.29	
	11.23		\$ 12.08	1.21	
\$	11.19	\$ 11.55		\$ 1.17	
	11.16	11.52		1.14	
	A. M.	A. M.	P. M.	P. M.	
	DAILY	DAILY	DAILY	DAILY	
	56	8	EX. SUN.	44	
			8		

STATIONS	FIRST CLASS			
	24	074	46	
	P. M.	P. M.	P. M.	
Arrive				
HARRISBURG (Phila. Div.)	\$ 6.05	\$ 6.15	\$ 9.00	
ROCKVILLE	5.55	6.05	8.50	
MARYSVILLE				
BANKS	5.50	6.00	8.45	
PERDIX				
COVE				
KINKORA HEIGHTS				
VIEW	5.43	5.53	8.38	
DUNCANNON	\$ 5.42			
JUNIATA BRIDGE				
AQUEDUCT				
LOSH'S RUN				
IROQUOIS	5.34	5.46	8.31	
BAILEY				
NEWPORT	\$ 5.25			
PORT	5.21	5.39	8.23	
OLD FERRY				
MILLERSTOWN				
THOMPSONTOWN				
VANDYKE	5.10	5.27	8.12	
TUSCARORA				
MEXICO				
PORT ROYAL	\$ 5.02			
MIFFLIN	\$ 4.56	5.18	\$ 8.02	
DENHOLM	④		④	
WALL	4.44	5.14	7.51	
HAWSTONE	\$ 4.38			
SHAWNEE				
LEWISTOWN	\$ 4.30		\$ 7.40	
LEWIS	4.25	5.04	7.36	
GRANVILLE				
LONGFELLOW	4.19	4.58	7.30	
HORNINGFORD				
McVEYTOWN				
RYDE				
VINEYARD	4.08	4.48	7.19	
NEWTON HAMILTON				
MOUNT UNION	\$ 3.57			
JACKS	3.54	4.41	7.12	
MAPLETON				
MILL CREEK				
ARDENHEIM				
HUNTINGDON	\$ 3.41	4.30	\$ 6.59	
WARRIOR RIDGE				
PETERSBURG	\$ 3.31	4.23	6.50	
BARRE				
SPRUCE	3.24	4.17	6.44	
SPRUCE CREEK				
UNION FURNACE				
BIRMINGHAM				
FORGE	3.14	4.07	6.34	
TYRONE	\$ 3.12		\$ 6.32	
GRAZIER	3.08	4.04	6.29	
TIPTON				
BELLWOOD				
BELL	3.01	3.57	6.22	
EAST ALTOONA				
ALTOONA	2.53	3.49	6.14	
	\$ 2.47	\$ 3.45	\$ 6.09	
BO	2.44	3.42	6.06	
Leave				
	P. M.	P. M.	P. M.	
	DAILY	DAILY	DAILY	
	24	74	46	

FIRST CLASS					
	612	●18	6	16	
	P. M.	P. M.	A. M.	A. M.	
		\$ 11.29	\$ 2.02	\$ 2.34	
		11.18	1.51	2.24	
		11.13	1.46	2.19	
		11.06	1.39	2.12	
		10.59	1.31	2.04	
		10.51	1.23	1.56	
		10.39	1.11	1.44	
		10.29	1.01	1.34	
		Ⓐ 10.21	Ⓐ 12.53	Ⓐ 1.26	
			\$ 12.41		
		10.10	12.35	1.15	
		10.04	12.29	1.09	
		9.53	12.18	12.58	
			\$ 12.08		
		9.45	12.04	12.51	
		\$ 9.33	\$ 11.50	12.40	
		9.25	11.39	12.33	
		9.19	11.33	12.27	
		9.09	11.23	12.17	
		\$ 9.06	\$ 11.21		
		9.03	11.17	12.14	
			\$ 11.10		
		8.55	11.06	12.07	
		8.47	10.58	11.59	
	\$ 7.35	\$ 8.35	\$ 10.45	\$ 11.51	
	7.32	8.32	10.42	11.48	
	P. M.	P. M.	P. M.	P. M.	
	DAILY	DAILY	DAILY	DAILY	
	EX. SUN.				
	612	18	6	16	

30 BEDFORD AND MT. DALLAS BRANCHES—SOUTHWARD

STATIONS	FIRST CLASS			
	*772 DAILY EX. SUN.	*776 DAILY EX. SUN.	*780 SUN. ONLY	*778 DAILY EX. SUN.
	A. M.	A. M.	A. M.	P. M.
Leave				
BROOKES MILLS.....	\$ 8.14	H. & B. T. M. R. R. Train	H. & B. T. M. R. R. Train	H. & B. T. M. R. R. Train
EAST FREEDOM.....	\$ 8.19			
CLAYSBURG.....	\$ 8.31			
SPROUL.....	\$ 8.36			
QUEEN.....	\$ 8.41			
IMLER.....	\$ 8.52			
OSTERBURG.....	\$ 8.59			
REYNOLDSDALE.....	\$ 9.06			
FISHERTOWN.....	\$ 9.13			
CESSNA PASSING SID.	9.17			
CESSNA.....	\$ 9.19			
YOUNTS.....	F 9.31			
CHALYBEATE.....	F 9.37			
MT. DALLAS..... (H. & B. T.)		\$ 10.13	\$ 11.13	\$ 3.53
LUTZVILLE (Mt. Dallas Br.)		F 10.24	F 11.24	F 4.04
DUNNINGS CREEK JCT.	9.40	10.37	11.37	4.17
BEDFORD.....	\$ 9.58	\$ 10.40	\$ 11.40	\$ 4.20
WOLFSBURG.....	F 10.05			
MANNS CHOICE.....	\$ 10.20			
BUFFALO MILLS.....	\$ 10.33			
BARD.....	F 10.37			
MADLEY.....	F 10.43			
FOSSILVILLE.....	\$ 10.50			
HYNDMAN.....	\$ 11.06			
BARCLAY PASSING SID.	11.09			
STATE LINE.....	\$ 11.33			
Arrive				
	A. M.	A. M.	A. M.	P. M.
	772	776	780	778

No. 773 is superior by direction to No. 778.

BEDFORD AND MT. DALLAS BRANCHES—NORTHWARD 31

STATIONS	FIRST CLASS			
	*775	*779	*773	*777
	A. M.	P. M.	P. M.	P. M.
Arrive				
BROOKES MILLS.....	H. & B. T. M. R. R. Train	H. & B. T. M. R. R. Train	\$ 4.34	H. & B. T. M. R. R. Train
EAST FREEDOM.....			\$ 4.28	
CLAYSBURG.....			\$ 4.15	
SPROUL.....			\$ 4.09	
QUEEN.....	H. & B. T. M. R. R. Train	H. & B. T. M. R. R. Train	\$ 4.04	H. & B. T. M. R. R. Train
IMLER.....			\$ 3.53	
OSTERBURG.....			\$ 3.48	
REYNOLDSDALE.....			\$ 3.40	
FISHERTOWN.....			\$ 3.33	
CESSNA PASSING SID.....			\$ 3.28	
CESSNA.....			\$ 3.25	
YOUNTS.....			F 8.11	
CHALYBEATE.....			F 8.02	
MT. DALLAS..... (H.&B.T.)	\$ 11.32	\$ 1.42		\$ 5.02
LUTZVILLE (Mt. Dallas Br.)	F 11.21	F 1.31		F 4.51
DUNNINGS CREEK JCT.	11.08	1.18	2.59	4.38
BEDFORD.....	\$ 11.08	\$ 1.15	\$ 2.48	\$ 4.35
WOLFSBURG.....			F 2.13	
MANNS CHOICE.....			\$ 1.58	
BUFFALO MILLS.....			\$ 1.42	
BARD.....			F 1.36	
MADLEY.....			F 1.29	
FOSSILVILLE.....			\$ 1.22	
HYNDMAN.....			\$ 1.10	
BARCLAY PASSING SID.			12.39	
STATE LINE.....			\$ 12.20	
Leave	A. M.	P. M.	P. M.	P. M.
	DAILY EX. SUN. 775	SUN. ONLY 779	DAILY EX. SUN. 773	DAILY EX. SUN. 777

STATIONS	FIRST CLASS			
	792 SUN. ONLY	511 DAILY	*790 DAILY EX. SUN	501 DAILY EX. SUN.
	P. M.	P. M.	P. M.	P. M.
Leave				
GRAMPIAN	WITHDRAWN 7-11-37	-----	S 1.20	-----
CURWENSVILLE		-----	S 4.56	-----
CLEARFIELD		-----	S 5.37	-----
WOODLAND		-----	S 5.57	-----
BIGLER		-----	S 6.04	-----
WALLACETON		-----	S 6.12	-----
BLUE BALL		-----	S 6.19	-----
SANFORD JUNCTION		-----	6.24	-----
PHILIPSBURG		-----	S 6.31	-----
MAPLE		-----	6.38	-----
MILLS		-----	6.42	-----
OSCEOLA MILLS		-----	S 6.46	-----
RETORT		-----	F 6.56	-----
SANDY RIDGE		-----	F 7.01	-----
SUMMIT		-----	7.06	-----
PARK		3.53	7.36	8.45
TYRONE		S 3.56	S 7.40	S 8.48
Arrive				
	P. M.	P. M.	P. M.	P. M.
	792	511	790	501

CLEARFIELD BRANCH—NORTHWARD

STATIONS	FIRST CLASS			
	578	*791	793	510
	A. M.	P. M.	A. M.	P. M.
Arrive				
GRAMPIAN	-----	S 12.55	WITHDRAWN 7-11-37	-----
CURWENSVILLE	-----	S 12.21		-----
CLEARFIELD	-----	S 11.38		-----
WOODLAND	-----	S 10.57		-----
BIGLER	-----	S 10.47		-----
WALLACETON	-----	S 10.37		-----
BLUE BALL	-----	S 10.28		-----
SANFORD JUNCTION	-----	10.21		-----
PHILIPSBURG	-----	S 10.15		-----
MAPLE	-----	9.50		-----
MILLS	-----	9.43		-----
OSCEOLA MILLS	-----	S 9.40		-----
RETORT	-----	F 9.24		-----
SANDY RIDGE	-----	S 9.21		-----
SUMMIT	-----	9.15		-----
PARK	8.11	8.41		12.27
TYRONE	S 8.08	S 8.37		S 12.24
Leave				
	A. M.	A. M.	A. M.	P. M.
	DAILY EX. SUN.	DAILY EX. SUN.	SUN. ONLY	DAILY
	578	791	793	510

Trains Nos. 791 and 790 will stop at location of former Mineral Spring station for exchange of U. S. Mails.

STATIONS	FIRST CLASS			
	EASTWARD		WESTWARD	
	*772	*750	*773	
			DAILY EX. SUN.	
Arrive	A. M.	A. M.	P. M.	
		Will Not Run May 31, July 5, Nov. 25, Dec. 25, 1937.		
HOLLIDAYSBURG	\$ 8.00	\$ 8.38	\$ 4.53	
JK	7.44	8.22	5.13	
ALTOONA	\$ 7.43	\$ 8.20	5.15	
Leave	A. M.	A. M.	P. M.	
	DAILY EX. SUN.	DAILY EX. SUN.		
	772	750	773	

MORRISON'S COVE BRANCH

STATIONS	FIRST CLASS			
	SOUTHWARD		NORTHWARD	
	*772	*750	*773	*751
	DAILY EX. SUN.	DAILY EX. SUN.		
Leave	A. M.	A. M.	P. M.	P. M.
HOLLIDAYSBURG	\$ 8.00	\$ 8.38	\$ 4.53	
BROOKES MILLS	F 8.14	F 9.10	\$ 4.34	\$ 3.20
McKEE		F 9.15		F 3.13
ROARING SPRING }		\$ 9.25		\$ 2.53
		\$ 11.50		
PECK		F 12.05		F 2.28
MARTINSBURG JCT. {		F 12.13		F 2.20
		F 12.50		F 2.05
CURRY		\$ 1.00		\$ 1.55
HENRIETTA				
Arrive	A. M.	P. M.	P. M.	P. M.
			DAILY EX. SUN.	DAILY EX. SUN.
	772	750	773	751

Will Not
Run
May 31,
July 5,
Nov. 25,
Dec. 25, 1937.

Will Not
Run
May 31,
July 5,
Nov. 25,
Dec. 25, 1937.

At Brookes Mills, switch will be kept set for movements to and from Bedford Branch.

MARTINSBURG BRANCH

STATIONS	FIRST CLASS		
	EASTWARD		WESTWARD
	#*782	{ Will Not Run May 31, July 5, Nov. 25, Dec. 25, 1937. }	#*781
Arrive	P. M.		DAILY EX. SUN.
MARTINSBURG	\$ 12.18		
MARTINSBURG JCT.	F 12.13		
Leave	P. M.		P. M.
	DAILY EX. SUN. 782	\$ 12.45 F 12.50 P. M. 781	

No. 782 will make backward movement into Martinsburg.

The switch leading from Branch to the Y will be kept set for south leg of Y.

STATIONS	Leave	FIRST CLASS		
		*871	873	
		DAILY EX. SUN.	SUN. ONLY	
		A. M.	A. M.	
LOCK HAVEN... Wpt. Div.				
POST PASSING SDG.				
MILL HALL				
HALL				
EAGLEVILLE				
WOOD				
HOWARD				
MT. EAGLE				
SAND				
CURTIN				
MILESBURG				
PLEASANT GAP Wpt. Div.		\$ 9.00	F 9.03	
BELLEFONTE... Bellefonte		\$ 9.15	\$ 9.15	
MILESBURG... Branch				
UNIONVILLE				
JULIAN				
MARTHA				
PORT MATILDA				
EAGLE				
PARK				
	Arrive	A. M.	A. M.	
		871	873	

No. 871 use back track at Bellefonte Station

BALD EAGLE AND BELLEFONTE BRANCHES

STATIONS	Arrive	FIRST CLASS		
		578	*870	
		A. M.	A. M.	
LOCK HAVEN... Wpt. Div.		\$ 10.49		
POST PASSING SDG.		10.44		
MILL HALL		\$ 10.42		
HALL		9.58		
EAGLEVILLE		\$ 9.51		
WOOD		9.45		
HOWARD		\$ 9.29		
MT. EAGLE				
SAND		9.24		
CURTIN				
MILESBURG		9.17		
PLEASANT GAP Wpt. Div.			F 10.11	
BELLEFONTE... Bellefonte		\$ 8.58	\$ 10.00	
MILESBURG... Branch		\$ 8.51		
UNIONVILLE		\$ 8.44		
JULIAN		\$ 8.36		
MARTHA				
PORT MATILDA		\$ 8.28		
EAGLE		8.17		
PARK		8.11		
	Leave	A. M.	A. M.	
		DAILY EX. SUN.	DAILY EX. SUN.	
		578	870	

FIRST CLASS				
	785 DAILY EX. SUN. A. M.	787 DAILY P. M.	511 DAILY P. M.	501 DAILY EX. SUN. P. M.
			\$ 2.12	\$ 7.02
			2.15	7.05
			\$ 2.18	F 7.08
			2.21	7.11
			\$ 2.29	F 7.19
			2.34	7.24
			\$ 2.38	\$ 7.28
			2.43	7.33
			2.50	7.40
	\$ 9.08	\$ 1.18	\$ 3.09	\$ 7.59
	\$ 9.16	1.26	3.15	\$ 8.07
			\$ 3.22	F 8.14
			3.28	F 8.20
			3.33	8.25
			\$ 3.37	F 8.29
			3.46	8.38
			3.53	8.45
	A. M.	P. M.	P. M.	P. M.
	785	787	511	501

EASTWARD

FIRST CLASS				
	872 A. M.	510 P. M.	786 P. M.	788 P. M.
		\$ 2.00		
		1.58		
		F 1.55		
		1.53		
		1.42		
		\$ 1.40		
		1.34		
		1.27		
	F 10.21			
	\$ 10.10	\$ 1.13	\$ 2.59	\$ 7.49
		\$ 1.07	\$ 2.51	\$ 7.41
		F 12.59		
		12.52		
		F 12.42		
		12.33		
		12.27		
	A. M.	P. M.	P. M.	P. M.
	SUN. ONLY 872	DAILY 510	DAILY 786	DAILY EX. SUN. 788

36

LEWISTOWN AND MILROY BRANCHES

STATIONS	FIRST CLASS			
	753	755		
	DAILY EX. SUN.	DAILY EX. SUN.		
	A. M.	A. M.		
Leave				
MILROY.....	K. V. R. R. Train	K. V. R. R. Train		
NAGINEY.....				
SHRADERS.....				
HONEY CREEK.....				
REEDSVILLE.....	S 5.50	S 7.00		
K. V. R. R. JCT.	5.52	7.02		
YEAGERTOWN.....	F 6.00			
BURNHAM.....	S 6.03			
BURNHAM PAS'G SID.	6.04			
WALNUT STREET.....	F 6.07			
MY	6.09			
CHESTNUT STREET....	S 6.10			
MAIN STREET.....	S 6.12			
LEWISTOWN.....	S 6.15			
Arrive	A. M.	A. M.		
	753	755		

LEWISTOWN AND MILROY BRANCHES

STATIONS	FIRST CLASS			
	752	754	756	
	A. M.	A. M.	P. M.	
	A. M.	A. M.	P. M.	
Arrive				
MILROY.....	K. V. R. R. Train	K. V. R. R. Train	K. V. R. R. Train	
NAGINEY.....				
SHRADERS.....				
HONEY CREEK.....				
REEDSVILLE.....	S 5.47	S 6.54	S 12.07	
K. V. R. R. JCT.	5.43	6.52	12.04	
YEAGERTOWN.....		F 6.47		
BURNHAM.....		S 6.44		
BURNHAM PAS'G SID.		6.42		
WALNUT STREET.....		F 6.39		
MY		6.37		
OHESTNUT STREET....		S 6.36		
MAIN STREET.....		S 6.33		
LEWISTOWN.....		S 6.30		
Leave	A. M.	A. M.	P. M.	
	DAILY EX. SUN.	DAILY EX. SUN.	DAILY EX. SUN.	
	752	754	756	

Switch at MY will be kept set for movements on Milroy Branch.

No. 753 is superior by direction to No. 754.

FIRST CLASS

757	759	765	767	769	771
DAILY EX. SUN.	DAILY EX. SUN.	DAILY EX. SUN.	DAILY EX. SUN.	SAT. ONLY	SAT. ONLY
P. M.	P. M.	P. M.	P. M.	P. M.	P. M.
K. V. R. R. Train	K. V. R. R. Train	K. V. R. R. Train	K. V. R. R. Train	K. V. R. R. Train	K. V. R. R. Train
S 12.11	S 1.50	S 3.30	S 4.40	S 6.40	S 11.05
12.13	1.52	3.32	4.42	6.42	11.07
F 12.17		F 3.36		F 6.46	
S 12.20		S 3.40		S 6.50	
12.22		3.41		6.51	
F 12.26		F 3.45		F 6.55	
12.28		3.46		6.56	
S 12.29		S 3.48		S 6.57	
S 12.31		S 3.52		S 7.00	
S 12.35		S 3.55		S 7.05	
P. M.	P. M.	P. M.	P. M.	P. M.	P. M.
757	759	765	767	769	771

EASTWARD

FIRST CLASS

	758	764	766	768	770
	P. M.	P. M.	P. M.	P. M.	P. M.
	K. V. R. R. Train	K. V. R. R. Train	K. V. R. R. Train	K. V. R. R. Train	K. V. R. R. Train
	S 1.48	S 3.26	S 4.38	S 6.35	S 11.02
	1.46	3.23	4.36	6.33	11.00
	F 1.42		F 4.32		F 10.55
	S 1.39		S 4.30		S 10.51
	1.37		4.27		10.49
	F 1.34		F 4.24		F 10.46
	1.31		4.22		10.44
	S 1.30		S 4.21		S 10.43
	S 1.28		S 4.19		S 10.40
	S 1.25		S 4.15		
	P. M.	P. M.	P. M.	P. M.	P. M.
	DAILY EX. SUN.	DAILY EX. SUN.	DAILY EX. SUN.	SAT. ONLY	SAT. ONLY
	758	764	766	768	770

No. 757 is superior by direction to No. 758

No. 765 is superior by direction to No. 766

U. S. MAIL WORK

STATIONS	WESTWARD						
	1	11	623	13	15	21	
Marysville.....			†E	†C D	†C D	†C D	
Duncannon.....			†E	†E	†E	†E	
Newport.....			†E	†E	†E	†E	
Millerstown.....				†C D	†C D	†C D	
Thompsontown.....				†C D		†C D	
Port Royal.....			†E	†C D	†C D	†C D	
Mifflin.....			†E	†E	†E	†E	
Hawstone.....							
Lewistown.....			†E	*E	†E	†E	
Granville.....			†D	†C D		†C D	
McVeytown.....			†E	†C D	†C D	†C D	
Newton Hamilton.....			†E	†C D	†C D	†C D	
Mount Union.....			†E	*E	†E	†E	
Mapleton.....			†E	†C D	†C D	†C D	
Mill Creek.....			†E		†C D	†C D	
Huntingdon.....	† X D	†D	†E	*E	†E	†E	
Petersburg.....			†E	†C D	†C D	†C D	
Barree.....			†E				
Spruce Creek.....			†E		†C D	†C D	
Birmingham.....			†E	†C D			
Tyrone.....	† X E	†E	†E	*E	†E	†E	
Tipton.....			†E				
Bellwood.....			†E		†E	†E	

C—Mail caught from crane only.

D—Mail delivered only.

C D—Mail caught and delivered.

E—Train stops, mail received or delivered or both.

* Daily.

† Daily except Sunday.

†~~X~~ Daily except Monday.

† Daily except Sundays and Holidays.

† Monday only.

(Note:—Letters and characters as used in this page have no reference to their application as provided for in 84.)

U. S. MAIL WORK

EASTWARD

	662	42	8	24	46	18					
.....
.....	†E	†C D	†C D
.....	†E	†C D	†E	†E
.....	†E	†C D	†E	†E
.....	†E	†C D
.....	†E	†C D
.....	†E	†D	†C D	†E
.....	†E	†C D	†E	†E	†E
.....	†E	†E
.....	†E	*E	†E	†E	†E
.....
.....	†E	†C D	†C D	†C D
.....	†C D	†C D	†C D
.....	*E	†E	†E
.....	†C D	†C D	†C D
.....	†C D	†C D
.....	†E	*E	†E	*E	†E	*E
.....	†C D	†E	†E
.....	†C D	†C D
.....	†D	†C D	†C D
.....	†C D	†C D	†C D
.....	†E	*E	†E	*E	†E	*E
.....	†D
.....	†E	†C D	†E	†D

Bald Eagle Branch:

No. 511

Martha †C D

Julian †C D

Snow Shoe Int., †C D

ARRANGED FREIGHT TRAIN SERVICE—WESTWARD

MAIN LINE

STATIONS	1st. LCL-1 (2)	2nd. LCL-1 (2)	JC-5 (1)	JC-7 (1)	M-9 (3)	Banana Extra (5)	ED-1 (1)	PG-1 (1)	VC-1 (1)	VL-7 (1)	NL-1 (1)	PG-5 (1)	PF-1 (1)	SW-1 (1)	ED-3 (3)	PG-3 (1)	CE-1 (1)	PG-15 (1)	Banana Special (4)	PG-19 (3)
	A.M.	A.M.	A.M.	A.M.	A.M.	A.M.	A.M.	A.M.	A.M.	A.M.	A.M.	P.M.	P.M.	P.M.	P.M.	P.M.	P.M.	P.M.	P.M.	P.M.
BANKS	12.15	12.50	1.00	2.00	3.30	6.00	8.00	8.30	9.15	9.30	9.45	2.00	4.00	4.15	5.00	5.45	6.15	6.45	9.30	11.30
ANTIS	3.15	4.10	6.00	8.00			11.55	1.00	1.25	1.30	2.00	6.00	8.00	8.10	8.55	10.30	11.30	12.30	12.30	8.00
BO (ALTOONA)	4.00	5.00	7.30	9.30			12.45	2.00	2.15	2.30	3.00	7.00	9.00	9.00	9.45	11.30	12.30	6.00	1.15	
	A.M.	A.M.	A.M.	A.M.			P.M.	P.M.	P.M.	P.M.	P.M.	P.M.	P.M.	P.M.	P.M.	P.M.	A.M.	A.M.	A.M.	A.M.
RUNNING TIME	3.00	3.20	5.00	6.00			3.55	4.30	4.10	4.00	4.15	4.00	4.00	3.55	3.55	4.45	5.15	5.45	3.00	8.30
YARD TIME	.45	.50	1.30	1.30			.50	1.00	.50	1.00	1.00	1.00	1.00	.50	.50	1.00	1.00	5.30	.45	

(1) Daily. (2) Daily Except Sunday. (3) Daily Except Monday. (4) Monday and Thursday. (5) Tuesday and Friday. (6) Sunday Only.

ARRANGED FREIGHT TRAIN SERVICE—WESTWARD

MAKE-UP

INTERDIVISIONAL RUNS

STATIONS	JA-5 (3)	TRS-1 (1)	TRS-3 (1)	JA-1 (1)	XPG-1 (1)	WP-15 (1)	SA-1 (1)	PG-13 (1)	RA-13 (1)	BA-13 (3)
	A.M.	A.M.	A.M.	P.M.	P.M.	P.M.	A.M.	A.M.	A.M.	P.M.
LOCK HAVEN							1.50	4.30	7.15	2.30
BANKS										
ANTIS							7.00	8.45	11.00	5.30
BO (ALTOONA)	4.00	6.00	7.00	12.01	4.00	8.30				
	A.M.	A.M.	A.M.	P.M.	P.M.	P.M.	A.M.	A.M.	A.M.	P.M.
RUNNING TIME							5.10	4.15	3.45	3.00
YARD TIME										

(1) Daily. (2) Daily Except Sunday. (3) Daily Except Monday. (4) Monday and Thursday. (5) Tuesday and Friday. (6) Sunday Only.

ARRANGED FREIGHT TRAIN SERVICE—EASTWARD

MAIN LINE

STATIONS	M-24 (1)	M-20 (1)	AC-10 (1)	M-10 (1)	AG-12 (1)	PG-4 (1)	PG-6 (6)	M-12 (1)	P-16 (1)	ED-2 (1)	PF-2 (2)	CMB (1)	PG-2 (1)	M-16 (3)	VL-2 (1)	PG-10 (1)	WVL-2 (1)	FW-8 (2)	CE-2 (1)	PN-2 (1)	ED-4 (1)	CS-8 (1)
BO (ALTOONA)	A.M.	A.M.	A.M.	A.M.	A.M.	A.M.	A.M.	A.M.	A.M.	A.M.	A.M.	A.M.	A.M.	A.M.	A.M.	A.M.	A.M.	A.M.	P.M.	P.M.	P.M.	P.M.
ANTIS	1.30	2.00	2.30	3.00	3.30	4.00	2.30	4.30	5.00	3.30	4.30	7.15	7.30		9.15	10.00	10.30	11.45	12.01	2.00	4.00	7.00
BANKS	8.30	12.00	9.30	10.00	10.30	11.00	9.00	11.30	11.30	9.30	10.00	8.45	9.00	9.00	10.00	11.30	11.20	12.45	1.00	3.00	5.00	8.00
YARD TIME	A.M.	Noon	A.M.	A.M.	A.M.	A.M.	A.M.	A.M.	A.M.	A.M.	A.M.	P.M.	P.M.	P.M.	P.M.	P.M.	P.M.	P.M.	P.M.	P.M.	P.M.	A.M.
RUNNING TIME	7.00	10.00	7.00	7.00	7.00	7.00	5.00	7.00	6.30	4.30	4.30	4.45	4.45	8.00	4.15	6.30	4.10	3.15	4.30	4.00	3.00	5.00

(1) Daily. (2) Daily Except Sunday. (3) Daily Except Monday. (4) Monday and Thursday. (5) Tuesday and Friday. (6) Sunday Only.

ARRANGED FREIGHT TRAIN SERVICE—EASTWARD

MAIN LINE

INTERDIVISIONAL RUNS

STATIONS	WP-10 (2)	XVL-8 (1)	PG-8 (1)	VL-8 (1)	BL-34 (3)	LCL-2 (2)	JA-6 (2)	PG-34 (2)	JA-2 (1)	CG-10 (3)	YA-4 (2)	PG-14 (1)	RA-14 (1)	SS-2 (1)	AH-16 (1)	SH-4 (1)	PG-16 (1)	AN-16 (1)
	P.M.	P.M.	P.M.	P.M.	P.M.	P.M.	A.M.	A.M.	A.M.	A.M.	P.M.	P.M.	A.M.	A.M.	A.M.	A.M.	P.M.	P.M.
BO	7.20	8.15	8.30	9.10		11.40	6.30	9.00	9.00	11.59	1.30	4.00		9.00		10.30		
ANTIS	8.20	9.00	9.30	10.10	11.00	12.25							3.00	2.00	10.45	3.30	10.50	11.30
BANKS	1.30	1.15	1.30	2.40	5.00	3.25												
LOCK HAVEN													7.15	6.45	2.30	7.30	1.50	4.00
	A.M.	A.M.	A.M.	A.M.	A.M.	A.M.	A.M.	A.M.	A.M.	A.M.	P.M.	P.M.	A.M.	P.M.	P.M.	P.M.	A.M.	A.M.
YARD TIME	1.00	.45	1.00	1.00		.45								5.00		5.00		
RUNNING TIME	5.10	4.15	4.00	4.30	6.00	3.00							4.15	4.45	3.45	4.00	3.00	4.30

(1) Daily. (2) Daily Except Sunday. (3) Daily Except Monday. (4) Monday and Tuesday. (5) Tuesday and Friday. (6) Sunday Only.

EXTRA STOPS BY PASSENGER TRAINS.

TRAIN NO.	STOP AT	FOR
8	Denholm	Employees
18	Denholm	Employees

TRAINS WAIT FOR CONNECTION.

JUNCTION POINT	TRAIN NO.	WAITS UNTIL	FOR TRAIN NO.
TYRONE	791	9.00 A. M.	623
	793	9.00 A. M.	623
HYNDMAN	773	1.30 P. M.	B&O 21

Conductors of Eastward through trains will report from Mifflin number and destination of passengers as follows: Trains en route to Philadelphia or New York report passengers for north and south of Harrisburg, including Cumberland Valley Branch and P. & R. Railroad.

Trains en route to Washington report passengers for east and north of Harrisburg, including Cumberland Valley Branch and P. & R. Railroad.

The conductor of any passenger train that makes connection with any of the connecting division trains when running late, will send a message to the Superintendent promptly from the first available telegraph or telephone office stating whether or not they have passengers for the connection.

Conductors of eastward local trains will report from View to Station Master, Harrisburg, showing the number and destination of passengers for Cumberland Valley Branch and P. & R. Also number of passengers for Philadelphia and Baltimore Divisions.

Trains having mail cars and receiving instructions to wait at junction points for a connecting train will not only wait for the passengers but will see that the mail is loaded before starting.

Branch trains will wait for their respective connections unless otherwise ordered. When late, Conductors will advise Superintendent whether or not they have passengers for connecting trains, giving number and destination.

**THE TICKET OFFICES OF STATIONS NAMED
BELOW WILL BE OPEN FOR THE
SALE OF TICKETS AS FOLLOWS:—**

Daily except Sunday		STATIONS	Sunday	
Open for Train No.	Close after Train No.		Open for Train No.	Close after Train No.
13 13 666	666 24 666	DUNCANNON NEWPORT MILLERSTOWN		
666 623 623	666 24 663	THOMPSONTOWN PORT ROYAL MIFFLIN		
662 623	6 666	LEWISTOWN McVEYTOWN	13	6
623 15 623 623	13 21 666 5	MOUNT UNION MOUNT UNION MAPLETON HUNTINGDON	623 15 13	18 21 5
623	24	PETERSBURG		
666 578 All Trains	18 16	TYRONE BELLWOOD ALTOONA	13 All Trains	18
772	773	HOLLIDAYSBURG		
All Trains All Trains All Trains		ROARING SPRING MARTINSBURG CURRY		
773	773	FISHERTOWN		
All Trains All Trains		BEDFORD MANN'S CHOICE		
All Trains All Trains All Trains All Trains		OSCEOLA MILLS PHILPSBURG CLEARFIELD CURWENSVILLE		
All Trains 578 578	511 511	BELLEFONTE HOWARD MILL HALL	All Trains	

When an unusual number of passengers are expected for any train not included in the foregoing list, Agents will open their respective ticket offices to meet the demand.

SPECIAL INSTRUCTIONS.

S1. A rule referred to by number, unless otherwise specified, is a rule in the Book of Rules.

Employees whose duties are affected by Time Tables must have with them while on duty a copy with all effective supplements properly inserted for all divisions or foreign railroads over which they are qualified to run.

TRAIN RULES

S2. STANDARD TIME.

S2A. Eastern Standard Time applies on this division as indicated on the cover and title pages.

D201. Standard clocks are located as follows: Train Dispatchers' Office, attended Block Stations, and at all points where Conductors or Enginemen report for duty, except Huntingdon, Mount Union, and Curwensville.

TIME TABLE

S3. SYMBOLS.

S3A. The following symbols will be used as indicated by Rule 5, A, B, C, D, etc.

D301.

S4. LETTERS AND CHARACTERS.

S4A. Rule 6 amplified:—

The following letters and characters indicate:—

S—Regular Stop.

F—Stop on signal to receive or discharge passengers.

A—Stop on signal to receive passengers.

B—Stop on signal to discharge passengers.

C—Regular stop to receive passengers.

D—Regular stop to discharge passengers.

E—Regular stop for express, mail, milk, newspapers or marketing.

G—Regular stop Saturday only.

L—Stop on signal Sunday only, to receive or discharge passengers.

‡—Unattended Block Station.

✱—Passenger train—schedule assigned to gas or gas-electric rail motor cars.

*—Passenger train—schedule assigned to handle passenger and freight equipment.

◇—Passenger train—no train baggageman.

●—No baggage service.

‡—Indicates trains that will not be operated on New Year's, Memorial, Independence, Thanksgiving and Christmas Days, or on Monday following when any of these Holidays fall on Sunday.

D401.

M—Stop on signal to discharge passengers from Harrisburg and beyond.

Q—Regular stop for mail, Monday only.

Z—Reduce speed to 15 miles per hour for safe delivery of mail.

Z7—Reduce speed to 15 miles per hour Monday only, for safe delivery of mail.

Ⓐ—Stop to take coal and clean ash pan unless otherwise ordered.
(See D1629)

S5.**COLOR SIGNALS.**

S5A. At the end of double track where switches are not interlocked, when the switch is set for trains to move in normal direction, switch lamp will display white disc (green light at night). When the switch is set against train movement in normal direction, switch lamp will display red disc (red light at night).

D501. Track covered by a slow order, other than a train order or Time Table special instructions, will be indicated by a yellow flag or light placed to the right of track a sufficient distance ahead of the obstruction to reduce from maximum authorized speed to the speed required at point of obstruction.

A green flag or light placed to the right of track marks the end of restricted territory.

S6———**S7.****ENGINE WHISTLE SIGNALS.**

D701. Enginemen will not acknowledge a fusee as prescribed by Rule 14(g) o o when fusee is placed on or near track as required by rule:

D702. Rule 14(l) amplified:

Sound: — — o o.

Indication: Approaching public crossings at grade, to be prolonged or repeated until crossing is reached, unless otherwise provided; also when view is obscured by weather and other conditions, approaching interlocking plants, stations, yards or other points where men may be at work on tracks.

This signal will not be prolonged or repeated approaching the following crossings:—

Mapleton—west of station.

Mill Creek—one mile west of station.

Ardenheim—three-fourths mile east of station.

Huntingdon—4th Street.

Tyrone—West of Station.

Altoona—31st Street.

Eldorado—at station.

Hollidaysburg—at station.

Williamsburg—West of Station.

Bedford—Richard Street.

Roaring Spring—South of Station.

Philipsburg—within borough limits.

Curwensville—within borough limits.

Houtzdale—within borough limits.

D703. Rule 14 amplified.

The engine whistle signal prescribed by Rule 14(m)———, will not be used except when approaching railroad crossings at grade and non-stop points where mail is caught or delivered.

D704. Rule 14 amplified.

Sound: — — o o o.

Indication: When passenger trains intend to stop for coal, water, hot parts etc., advance information must be given by sounding the above whistle signal when passing the last interlocking station before reaching the point at which the stop is to be made.

On Bald Eagle Branch this signal will be used by freight trains intending to stop for water as follows:

WESTWARD	
WHISTLE SOUNDED AT	INDICATES STOP AT
Wood	Holters
Milesburg	Snow Shoe Int.
EASTWARD	
Eagle	Port Matilda
Port Matilda	Snow Shoe Int.
Milesburg	Holters
Wood	Lock Haven

D705. Rule 14 amplified.

Sound: — — o.

Freight trains that do not intend to stop at water or coaling station must give the above whistle signal when passing interlocking stations as follows:

WESTWARD	
WHISTLE SOUNDED AT	INDICATES NO STOP AT
Port or Mifflin	Denholm
Lewis	Longfellow
Huntingdon	Warrior Ridge
Forge	Tipton
EASTWARD	
Jacks	Longfellow
Lewis	Denholm

D706. Rule 14 (dc) — — — — o o and (eg) — — — — o o in effect:

Newport—Old line.

Lewistown—No. 5 yard track.

Mount Union—Track A and No. 4 yard track.

Huntingdon—No. 5 yard track.

Tyrone—No. 5 yard track.

Milroy Branch at MY.

Hollidaysburg and Petersburg Branch at Petersburg.

Morrison's Cove Branch at Hollidaysburg.

Bedford Branch at BM.

Martinsburg Branch at MJ.

Mt. Dallas Branch at DC.

Clearfield Branch:

Between Vail and Gardner.

Between Retort and Mills.

Rule 14 (dc) — — — — o o in effect:

Denholm—Coaling track A.

Huntingdon—Icing track A.

Snow Shoe Branch, at Snow Shoe Int.

Rule 14 (eg) — — — — o o in effect:

Denholm—Coaling track H and pull-up track.

Huntingdon—Icing track C.

Bellefonte Branch, at Milesburg.

D707. Rule 14 amplified.

When it is desired to enter passing sidings at interlocking stations, enginemen will so indicate to signalman when approaching these stations by one long, one short and one long sound of the whistle, thus: — o —

Where switches leading to sidings are remotely controlled, trains desiring to use these sidings will give this signal when passing the first Block Station in the rear.

D708. Within the borough limits of Tyrone and Clearfield engine whistle must not be used to sound crossing alarm. Warning to be given by engine bell while engine is in motion.

D709. During cold and stormy weather when approaching Bailey, Hawstone, Mapleton and Bellwood water troughs and Bell Interlocking, the whistle must be sounded as prescribed by Rule 14 (1).

D710. Trains approaching Denholm Coaling Station on any track, and not intending to stop, will sound whistle, as prescribed by Rule 14 (1), as a warning to men working about the tracks.

D711. Passenger trains stopping at Tyrone will make use of the electric bell instead of engine whistle to recall flagman.

S8. EMERGENCY WHISTLE AND HORN SIGNALS AT INTERLOCKING STATIONS.

D801. Emergency whistle or horn signals in service as follows;

Bell, RO, 4th St. So. Side, 9th St. So. Side, 10th St., 14th St., JK, BO.

S9. COMMUNICATING SIGNALS.

D901. Rule 16 amplified.

Sound: (ja) o o o o o o

Indication: When standing—deplete brake pipe pressure.

S10. TRAIN SIGNALS.

D1001. Rule 20a will apply on Main Line portion of the Division. Also on Hollidaysburg and Petersburg Branch as follows:

Between JK and Eldorado.

Between Wye and PG.

S10A. Rule 21b.

21b. (DOUBLE, THREE, OR MORE TRACKS.) On portions of the railroad so specified on the time-table, the display of white flags and white lights, as prescribed by Rule 21, will be omitted. Regular trains must be designated by both schedule and engine number.

D1002. Rule 21b will apply on Main Line portion of the Division. Also on Hollidaysburg and Petersburg Branch as follows:

Between JK and Eldorado.

Between Wye and PG.

(a) On Single Track Portions of the Division, the display of white flags and white lights as prescribed by Rule 21 will be omitted on all extra trains except passenger extras.

(b) A regular train will be identified by its engine number.

(c) A train must be informed by train order as to the number of the engine on an opposing superior regular train; however, if the engine number is not received by train order, the identification will be made by a personal conference between the Conductors and Enginemen of trains involved.

(d) A train will obtain from the Signalman the number of the engine on a superior regular train in the same direction it is moving.

(e) When a regular train is named in a train order by its schedule number, the engine number must be stated in addition to the schedule number.

(f) Signalmen must observe and record the engine number on regular trains and when reporting them will give the engine number in addition to the train number.

D1003. Rule 17a amplified.

(g) Approaching a fixed signal affecting the movement of the train when the weather conditions are such that in the judgment of the Engineman his view of the signal will be thereby improved.

D1004. Rule 19.

On portions of the Railroad so specified on the time-table, Rule 19, Figure 6 is not in effect.

Rule 19, Figures 3, 4, 10 and 14 amplified in this territory.

DOUBLE TRACK. REAR OF TRAIN BY NIGHT WHEN TURNED OUT AGAINST THE CURRENT OF TRAFFIC.

THREE OR MORE TRACKS. REAR OF TRAIN BY NIGHT ON FREIGHT TRACK WITH THE CURRENT OF TRAFFIC, OR ON ANY TRACK AGAINST THE CURRENT OF TRAFFIC.

D1005. Special instruction D1004 will apply on Main Line portion of the division, also on Hollidaysburg and Petersburg Branch between JK and Eldorado.

D1006. Rule 19. The bottom line under Fig. 4, page 24, modified to read:

"Lights showing yellow to the outside, and red to the rear."

NOTE—Markers will display colors to the rear as prescribed by Figures 5 and 6 when conditions require.

The paragraph preceding the NOTE under Figure 10, page 27 and Figure 14, page 29, modified to read:

"Marker lamps lighted showing yellow to the outside, and red to rear."

The NOTE modified to read:

"NOTE—Markers will display colors to the rear as prescribed by Figures 5 and 6 when conditions require."

D1007. Rule 19 modified. Bellefonte Branch passenger trains moving backward between Bellefonte and Milesburg will not be required to remove markers from rear of train, nor to display regulation markers on front of engine. When night signals are required they must display a red light to rear

D1008. Rule 26 amplified. When a blue flag or blue light is placed at one or both ends of an engine, or cars to which an engine is attached, the engineman and fireman must be notified; they must also be notified when the blue flag or blue light is removed.

D1009. When work is to be done under or about a train at Altoona Passenger Station which requires an Inspector to place himself in a position which might result in personal injury if the train should be moved, both ends of the train must be protected by a blue signal in accordance with the first paragraph of Rule 26.

D1010. At Altoona Station, in the event of markers not going through, flagmen of through passenger trains will not take down their markers until relieved by connecting division flagman after which markers must be changed in such a manner that there will always be at least one marker properly displayed.

On through passenger trains on which there is shifting to be done from the rear while night signals are being used, outbound Flagman will not display his marker on the right hand side of westward trains nor the left hand side of eastward trains until the shift is completed, to avoid obstructing the Yard Engineer's view.

On passenger trains terminating at Altoona markers must not be removed until train has arrived in station and passengers discharged.

S11. USE OF SIGNALS.

D1101.—

D1102. Proper application of Rule 27 in connection with Figure 1, Rule 287:

The marker light out on signal as shown in Figure 1, Rule 287, does not prevent the correct reading of that signal, and, therefore, the marker light being out should be reported from the next point of communication, where this report can be made without serious delay to the train.

D1103. Rule 34—When calling signals, the name as it appears in the Book of Rules shall be used, omitting the word "signal" except Rule 275.

D1104. When a pusher engine is assisting a train, coupled behind the cabin car, and the flagman that protects the rear end of the train is riding in the cabin car, the requirements as to the use of fusees should be met by throwing the fusees off between the cabin car and pusher engine on the track the train is using, and not dropping them between that track and an adjoining track.

D1105. On Hollidaysburg and Petersburg Branch, between Hollidaysburg and Petersburg, Morrisons Cove, Martinsburg, Bedford and Mt. Dallas Branches, Bellwood Branch, between Bellwood and Pine Run Jct., Clearfield Branch, between Maple and Grampian, and Moshannon Branch, switch lamps will not be lighted. Third paragraph, Rule 27, not in effect.

D1106. Hollidaysburg—Within yard limits switch lamps, will be used only on the following switches:

Frankstown:

Crossovers between Nos. 1 and 2 tracks.

Public Delivery Track.

Advance Yard to No. 1 track.

Hollidaysburg:

No. 1 track to Morrisons Cove Branch.

No. 3 track to No. 1 track, Hollidaysburg & Petersburg Br.

Crossover between Nos. 1 and 2 tracks.

Penn Central Light & Power Co.

Spur connecting with J. B. Condon side track.

D1107. On Hollidaysburg and Petersburg Branch, facing point switches in main tracks are equipped with reflector lens type switch lamps.

S12. SUPERIORITY OF TRAINS.

D1201. On all single track portions of the Division Eastward and Southward trains are superior by direction to trains of the same class in the opposite direction unless otherwise specified.

D1202. Where all schedules are represented by one engine and crew, a delayed regular train becomes superior to all other trains.

D1203. The direction of Snow Shoe Branch is East and West, Snow Shoe being the western terminal.

The direction of Moshannon Branch is North and South, Osceola Mills being the Northern terminal.

The direction of Bellwood Branch is North and South, Bellwood being the Southern terminal.

S13. BULLETIN BOARDS.

D1301. Location of bulletin board points on this Division, where all General Orders of this Division will be posted and delivered. Also Bulletin Board points on K. V. R. R., H. & B. T. M. R. R., and B. C. R. R., where general orders of this division as indicated will be posted and delivered.

General Orders of other Divisions will be posted and delivered at points on this Division as indicated below:

LOCATION	Other Divisions	Zones
Altoona, Passenger Crew Dispatcher's Office	Pittsburgh Williamsport Philadelphia	A,B,C,D,E,F A,B,C A
Altoona Asst. Yd. Mas. Office, 4th St. S. S.		
Altoona, Asst. Yard Master's Office, JS		
Altoona, Asst. Yard Master's Office, WH		
Altoona, Crew Clerk's Office, RV	Pittsburgh Eastern Division Conemaugh Monongahela	A,B,C,D,E,F A A,B A,C
Altoona, Asst. Yard Master's Office, WJ		
East Altoona, Engine Dispatcher's Office	Pittsburgh Eastern Division Conemaugh Monongahela Williamsport Philadelphia Wilkes-Barre	A,B,C,D,E,F A A,B A,C A,B,C,D A A
East Altoona, Asst. Yard Master's Office, ND	Pittsburgh Conemaugh Monongahela Williamsport Philadelphia Wilkes-Barre	A,B,C,D,E,F A,B A,C A,B,C,D A A

LOCATION	Other Divisions	Zones
Tyrone, Yard Office	Philadelphia Williamsport Wilkes-Barre	A A,B,C,D E
Osceola Mills, Yard Office	Williamsport Wilkes-Barre	A,B,C,D E
Osceola Mills, Engine House	Williamsport Wilkes-Barre	A,B,C,D E
Huntingdon, Yard Office	Philadelphia	A
Huntingdon, Oil House Office	Philadelphia	A
Mount Union, Agent's Office, Freight Station		
Lewistown, Yard Office	Philadelphia Wilkes-Barre Williamsport	A A,B,C,D,E,F C
Belleville K. V. R. R., Agent's Office	Middle	A,E
State Line, Agent's Office		
Bellefonte, Yard Office	Williamsport	WR,A,B,C,D
Saxton, H. & B. T. Engine House	Middle	C
Bellefonte, B. C. R. R. Yard Office	Middle	G

S14. GENERAL ORDERS.

S14A. Rule 75 amplified.

D1401.

1. Conductors and Enginemen must have a copy of all General Orders that pertain to any portion of a General Order Zone over which they are qualified to run either in part or as a whole. Conductors and Enginemen will not be required to understand a General Order pertaining to territory over which they are not qualified to run.

The qualification page following the instructions under caption "Miscellaneous" in each Conductor and Engineman's Home Division Time-Table must show their Home Division, Name, Occupation, and all General Order Zones over which they are qualified to run either in part or as a whole. If a Conductor or Engineman is qualified to run over a Foreign Division, the qualification page in their time-table for that Division must show General Order Zones of that Division over which they are qualified to run.

The Bulletin Board Attendant will be governed accordingly in checking time-tables.

2. The Bulletin Board Attendant will supervise the handling of the Employes' Register, matters pertaining to General Orders and delivery of time slips to conductors and enginemen.

He must personally witness the signatures of Conductors and Enginemen on their register, personally inspect time-tables to ascertain that they contain all General Orders as outlined in

paragraph (1), punch and insert sticker copies of such General Orders in time-tables, and, after each Conductor and Engineman has registered and had his time-table verified as to containing all copies of General Orders required, he will cancel the figures on Form 'Z' so as to indicate the date of reporting for duty and numbers of necessary General Orders, then deliver to the person presenting the time-table and Form 'Z', his time slip and Form 'Z' properly prepared.

An additional Form 'Z' card or cards must be used if a conductor or engineman is qualified to run over more than eight (8) General Order Zones and a notation made following his name indicating the number of cards.

If a Conductor or Engineman reports for duty at a point where the General Orders received do not cover all the territory over which he is qualified to run, the General Order Clearance received there does not apply to territory not covered by General Orders sent there and he must not run over such territory until after having received General Order Clearance at a point to which General Orders covering it are sent, unless otherwise instructed by the Superintendent of that territory.

The use of a receipted card furnished by the Bulletin Board Attendant, and as referred to in the second paragraph of Rule 75, also the use of column with caption "Last General Order" on employes' register, will be discontinued.

The method of preparing Form 'Z' is as follows: To indicate date of reporting for duty, cancel the star under proper date; however, if a Conductor or Engineman reports for duty twice on the same date, cancel the figure or figures of that date to indicate the second time reporting for duty. To indicate General Order information, cancel the star under proper number. The figures 1 to 9, inclusive, represent the last figure of numbers above an even hundred, and from 10 on the last two figures above an even hundred. The use of this punch must be confined to the Bulletin Board Attendant.

When a new time table is effective, or, after a Form 'Z' card is used up, it must be turned in to the Bulletin Board Attendant, who will prepare a new card as follows:

At the end of a month, with no change in time table, prepare a new card in such a manner as to show the same General Order information as was shown on the old card, and proper information for first trip.

When a new time-table is effective, the information shown on the old Form 'Z' card need not be shown on the new one, but proper information for first trip must be shown.

3. Before starting out on a run the Engineman must show his General Orders to his Fireman, and when he has no Conductor he must also show his Form 'Z' to his Fireman. The Conductor must show his General Orders to his Trainmen.

4. When Conductors and Enginemen compare time, as required by Regulations 803, 807 and 817, they must in addition be governed as follows:

(a) Check the qualification page in each other's Time-Table to determine necessary qualification information for that trip.

(b) Check the latest General Orders in each other's Time-Tables.

(c) Compare their Forms 'Z' for that trip.

5. In the application of these instructions "a pilot will be regarded the same as a Conductor or Engineman."

6. The foregoing instructions apply to conductors and enginemen when serving in that capacity.

All qualified conductors and enginemen when not serving in that capacity must be provided with a Form 'Z', and when they register at the beginning of each day's work present to the bulletin board attendant their Time Tables and have necessary General Orders inserted, also present their Form 'Z' to be punched as provided by instructions covering conductors and enginemen serving in that capacity.

D1402. General Order Zones of this Division are as follows:

ZONE A—Banks to Bell, including No. 5 track between Forge and Grazier.

ZONE B—Bell, inclusive, to BO, inclusive, and Hollidaysburg and Petersburg Branch.

ZONE C—Clover Creek, Springfield, Canoe Creek, Bedford, Mt. Dallas, Morrison's Cove, Martinsburg and Bloomfield Branches.

ZONE D—Clearfield Branch north of Park, Moshannon, Goss Run, Little Muddy Run, Muddy Run, and Fairbrook Branches.

ZONE E—Lewistown and Milroy Branches.

ZONE F—Bellwood Branch.

ZONE G—Bald Eagle, Snow Shoe, Bellefonte Branches and Clearfield Branch from Wilson to Park inclusive.

General Orders for each zone will be numbered consecutively, followed by the proper zone letter; example, General Order No. 401, Zone A.

D1403. A Conductor or an Engineman, who has not made a trip, either in service or a special trip in order to keep posted on the physical characteristics of the road, on his own division, or a part of it, or over connecting divisions used in inter-divisional service within one year must not be used on such portions of the road until he has made one or more trips. In such case it will be necessary to go over the portions of the road involved, be examined and qualified by the proper division officer.

S15. TRACK ASSIGNMENTS.

D1501. Double Track.

Hollidaysburg and Petersburg Branch:

Between JK and Eldorado

Between W and PG

Bald Eagle Branch:

Between Sand and Wood.

D1502. Track assignment.

On double or more tracks the current of traffic is as follows:
Hollidaysburg and Petersburg Branch:

	Eastward	Westward
Between JK and Eldorado	No. 1	No. 2
Between Wye and W	Nos. 1 & 3	Nos. 2 & 4
Between W and PG	No. 1	No. 2

Bald Eagle Branch:

Between Sand and Wood

Eastward Westward

No. 1 No. 2

Main Line.**EASTWARD PASSENGER**

No. 3 track BO to Antis.
 No. 2 track Antis to Forge.
 No. 1 track Forge to Banks.

WESTWARD PASSENGER

No. 2 track Banks to View.
 No. 4 track View to Tunnel.
 No. 3 track Tunnel to Antis.
 No. 4 track Antis to BO.

EASTWARD FREIGHT

No. 1 and A tracks BO to JK.
 No. 1 track Antis to Forge.
 No. 2 track Tunnel to View.
 No. 3 track View to Banks.

WESTWARD FREIGHT

No. 4 track Banks to View.
 No. 3 track View to Tunnel.
 No. 2 track Tunnel to Forge.
 No. 4 track Forge to Antis.
 No. 2 track JK to BO.

Denholm Coaling Station:

Track A, Eastward Coaling Track.

Track H and pull up track, Westward Coaling Tracks.

Huntingdon Icing Station:

Track A, Eastward Icing Track.

Track C, Westward Icing Track. Trains will use this track
 in either direction by receiving proper signal at Hunting-
 don or Deer.

Assigned Yard Running Tracks:**ALTOONA**

No. 1 Eastward, JK to Antis.

No. A Eastward, JK to 4th Street.

No. 2 Westward, Antis to JK.

No. 3 Southside, between JK and BO.

No. 10 Southside, between JK and BO.

South Runner between ND and 4th Street.

Middle Runner between ND and 4th Street.

Approach Track, Westward, Bell to East End WJ Receiving
 Yard.

Engine Track, Eastward, East End WJ Receiving Yard to Bell.

No. 12 Track between WJ Hump and East End WJ Receiving
 Yard.

No. 31 Track between WJ and RV.

No. 1 Track between RV and RO.

No. 0 Track between GD and 7th Street.

Between GD and RV:

Lead to Pittsburgh Div. cabin tracks east of 300 Shanty, also
 No. 1 cabin track to RV.

HOLLIDAYSBURG

Eastward—W to Frankstown.

Westward—Frankstown to W.

Running Track between Frankstown and Brick Office (No. 6
 Track Westward Receiving Yard, No. 14 track Westward
 Classification Yard.)

Running Track W to East End Eastward Classification Yard (No. 12 Track Eastward Receiving Yard and continuation thereof to junction with No. 2 track.)

Movements will be made in either direction on assigned Yard Running Tracks as directed by Yard Master, Signalman or as indicated by signal.

D1503. Passenger Trains as specified will use Tracks as follows unless otherwise indicated.

No. 13 Sunday and No. 15 Monday will set off empty milk cars at Huntingdon.

No. 8 will pick up milk car at Huntingdon and Lewistown.

No. 24 will pick up milk car at Huntingdon.

No. 663 will use No. 5 track Lewistown to Lewis to be passed by No. 79 and set off milk cars.

No. 666 will perform milk service. Will use old line Duncannon to be passed by No. 2.

S16. MOVEMENT OF TRAINS.

D1601. Train Dispatchers in charge of train movements located at Altoona.

S16A. Rules 83 and 83a.

The information required by Rules 83 and 83a must be obtained as indicated below.

D1602. Rule 83. That clearance message CT 1246 given by the signalman without consulting the Dispatcher be used where information is given to train at its initial station on any division, or at a junction, or at a point where they pass from double to single track; and where the information is given by the Dispatcher to a train before reaching a point such as above indicated, it should be done by a train order.

Rule 83a—In the application of Rule 83a, this information may be given verbally.

D1603. Rule 97 modified. (Single track) Extra trains must not be run without train orders, except as provided in Rule 405.

S16B. Rule 98.

D1604. Rule 98 will apply only at the following junctions: Brookes Mills, Martinsburg Junction and Dunning's Creek Junction.

S16C. Rule 104.

Unless hand-operated switches in main track are listed in the time-table as being in charge of a switch tender or a signalman, they must be operated by a member of the train or engine crew using the switch, except as otherwise provided in Rule 104 and at a meeting point where the train holding main track may set switch for opposing train to enter siding.

Trains or engines must approach switches where switch tenders are stationed, prepared to stop and must stop clear of any switch or route unless signal to proceed is received from the switch tender.

A switch tender must not set a switch to divert an approaching train until he is assured of its identity and that its speed does not exceed 10 miles per hour.

D1605. Switch tenders are stationed at and have charge of main track switches as indicated:—

Location	Switches
.....

S16D. Rules 106 and 106a.

D1606. When a passenger train is stopped at a station, trainmen must have all side doors closed on the opposite side from the station platform where passengers are received or discharged.

S16E. Rules 251, 253, 254.

D1607. Rules 251, 253 and 254 will apply on the Main Line portions of the Division, also on Branches as follows:
Hollidaysburg and Petersburg Branch:

- Between JK and Eldorado.
- Between Wye and PG.

When a train stops for water at an irregular water station or is delayed on account of equipment failure it will be considered as work under the provision of Rule 253.

D1608. Rule 9 modified. The N. Y. C. grade crossing at Betz Junction protected by stop boards and distant signals fixed in caution position. Night signals will not be displayed.

All trains of both railroads must stop at stop board and not proceed over crossing until the crew has ascertained that the movement can be made with safety.

In case trains of both railroads arrive at the crossing at approximately the same time, trains of Pennsylvania Railroad will have prior right to the crossing.

The switches leading to Betz Branch and Scrano Stone Company side track will be hand operated. Both switches will be normally set for main track movement.

D1611. At Altoona passenger station, Enginemen of westward trains using No. 1, 2, 3 or 4 track stopping with engine beyond dwarf signal at west end of train shed, will start on receiving communicating signal, provided that in addition, a

hand signal to proceed is received from a member of the train crew. The Conductor will be responsible for knowing dwarf signal is in proceed position before starting train.

D1612. Conductors of all trains and enginemen of light engines must inquire for orders before starting from initial point.

D1614. Trainmen must not stand on top of engine tenders, box cars or other high cars, while passing under signal bridges, overhead water plugs, train shed Altoona Passenger Station, or while passing under the following overhead bridges and coal tipples:

MAIN LINE:

Spruce Creek Tunnel.

Over-head bridge No. 153.58 at Miffin.

TROUT RUN BRANCH:

Coal Tipple 2.06 (Penn Coll.)

LITTLE MUDDY RUN BRANCH:

Coal Tipple 2.82 (Eureka Coll.)

MAPLETON BRANCH:

Coal Tipple 2.96 (Coaldale Coll.)

BEDFORD BRANCH:

Leap Ganister Rock Co., side track south of Madley, Tipple.

MT. DALLAS BRANCH:

Over-head bridge No. 2.32, 1.5 Miles North of Cliffs.

CRISSMAN BRANCH:

Quaker Sales Co. Stone Tipple.

D1615.

Northward Clearfield Branch freight trains will detach the helping engines on the rear that are to be cut off at Summit from their trains, at the South leg of Summit Wye, and engines will follow trains carefully from that point to Summit.

In starting a freight train having a helper on the rear, the front Engineman will give whistle signal to release brakes, but will not use steam until the Engineman of the helper has given the proper signal to proceed. Steam should then be applied gradually to avoid rough handling of train.

D1616. In using the Wye at Summit, engines will enter the North Leg and leave by the South Leg.

In using the Wye at Osceola Mills Engine House, engines will enter the South Leg and leave by the North Leg.

D1617. The south or eastward track on old line from Port Block Station to east end of the old line east of Newport must be kept clear for use as a running track.

D1618. No. 5 track between Lewistown and Lewis is controlled by signalman at Lewis. Trains will use this track by receiving proper signal at Lewistown or Lewis and must not enter No. 5 track between Lewistown and Lewis without permission from signalman at Lewis. A train leaving No. 5 track between these points must report when clear.

D1619. Track A and No. 4 yard track between Jacks block station and track scale west of Mount Union freight station will be used as running tracks. Eastward movements from Jacks will be governed by signal at Jacks. All other movements both eastward and westward will be made under the direction of the signalman at Jacks and permission must be obtained from him to use this track. Trains using running track must approach all switches carefully expecting to find them occupied.

The yard tracks will be numbered from north side and used as follows:

No. 1 for empty gondolas and hoppers.

No. 2 for empty box cars.

No. 3 for loaded cars.

Nos. 5, 6 and 7 for classifying.

Street crossings at Mount Union must not be blocked by trains or cars except when in motion.

D1620. No. 5 track between Huntingdon and Deer is controlled by signalman at Huntingdon; trains will use this track by receiving proper signal at Huntingdon, but must not pass switch leading from yard to No. 5 track at west end of Huntingdon yard without permission from signalman at Huntingdon. Trains must not enter No. 5 track at a hand thrown switch without permission from the signalman at Huntingdon, and when leaving it at a hand thrown switch must report when clear to signalman at Huntingdon.

D1621. P. R. R. engines and trains may use H. & B. T. R. R. main track between Huntingdon and South End of Long Siding yard by getting permission from Block Operator, Huntingdon, and reporting to him when clear. Rule 93 will apply to movements within yard limits.

D1622. No. 5 track between Forge and Grasier is controlled by Signalman at Wilson. Trains will use this track by receiving the proper signal at Forge or Grasier.

In addition to receiving fixed signal, trains must receive proceed hand signal from switch tender before passing over hand operated switches at Wilson.

Westward trains using No. 5 track between Wilson and Grazier having work at Grazier must communicate with Wilson when ready to return to train.

The Yard track leading from East leg of Y, commonly called Ward House Track, occupied with freight cars in the process of unloading.

All movements on East leg of Y must be preceded by a Flagman when passing these cars.

D1623. No. 1 track in Receiving Yard between Vail and East Tyrone Scales, and No. 8 track in Classification Yard, between East Tyrone Scales and 17th Street, operated as a yard running track in both directions; controlled by Signalman at Park. Trains must not enter this track without permission from Signalman at Park, and when leaving it must report clear to him:

The switches at East Tyrone Scales will be normally set for movements from No. 1 to No. 8 yard tracks.

D1624. Normal position of switch at W for movement as follows:

From No. 3 track to No. 1 track.

D1625. Power track between BO and JK is controlled by signalman at JK; trains will use this track upon receiving proper signal at BO or JK. Trains must not enter the power track between BO and JK without permission from the signalman at JK and when leaving it between these points must report when clear to signalman at JK.

D1626. Eastward Freight Trains stopping at Warrior Ridge Water Station No. 1 or No. 2 for any purpose must so advise the signalman at Huntingdon promptly by telephone.

D1627. At Harrisburg, and Altoona, Station Master is authorized to verbally instruct Conductor to run as a section of a regular train or as a Passenger Extra. Conductor will instruct Engineman.

D1628. On double, three or more tracks, also on single track between Wye and Eldorado operated under Controlled Manual Block Rules, a train not representing a schedule will run extra, when proper signal is displayed or permission is given by signalman, or station master.

D1629. Trains scheduled to stop at Denholm for coal and to have ash-pan cleaned will not make the stop when engines are exchanged at Harrisburg westbound, or Altoona eastbound.

Enginemen of westward passenger trains upon receiving an engine with low tank at Harrisburg must so inform Station Mas-

ter at Harrisburg, or his representative, before leaving there, in order that an engine with proper tank may be provided at Altoona.

All passenger extras east and west, except those enroute to or from points South of Harrisburg, will stop at Denholm for coal.

Passenger trains with more than one engine, stopping at Denholm for coal, will coal the engine next to the train only.

D1630. Markers on cabin cars of Westward freight trains moving to WJ Receiving Yard, Altoona, will not be displayed after helper engine has coupled to train.

D1631. From time to time changes will be made in the method of operation of outlying hand thrown switches and cross-overs as follows.

Main track switch with derail connection: Connected with one lever at main switch, which will unlock and operate switch and derail.

Crossover between main track and siding, where there is no turnout within 200 feet of siding end of crossover: Switches can be unlocked and operated by levers located at each end of crossover.

Crossover between main tracks and between main track and siding, where there is a turnout within 200 feet of siding end of crossover: A lever located in center of crossover must first be thrown to unlock switches then the switches can be operated by throwing lever located at each end of crossover.

Electrically Locked Hand Switches: Before these switches can be thrown, the block operator controlling same must be requested to release the lock.

After main track switches and crossovers have been used, all levers must be returned and secured in normal position.

The pipe connections operating derails on branches, will be removed, and separate levers installed for operating derails.

At a number of locations, derails are being removed. Clearance point designated by a ten inch yellow stripe, painted outside, on head, web, and base of both rails.

D1632. Advance sections of limited trains operating as passenger extras must be so handled as to arrive at the division terminal not more than 20 minutes in advance of the scheduled arriving time, and must not be in excess of 20 minutes ahead of schedule during any part of the run.

D1633. A trainman will be required to walk ahead of his train when using the Old Line at Duncannon, for the purpose of issuing warnings at all crossings, and trains must be moved over the crossings at such a speed as will permit trainmen to comply with these instructions.

D1639. Trains may use tracks on the following branches by permission of the Train Dispatcher or designated Signaller, as indicated below, to whom report must be made when clear:

Tracks	Obtain Permission from
Fairbrook Branch	Train Dispatcher
Branches of Hollidaysburg and Petersburg	
Branch as follows:	
Springfield	Train Dispatcher

A portion of Moshannon Branch and Branches of Moshannon Branch as follows:

Portion of Moshannon Branch from
RAM to McCartney

Branches of Moshannon Branch

Trout Run

Big Run

M. & C.

Beaver

Ednie

Coal Run

Morgan

Burley

Goss Run

Houtzdale

Amesville

Amesville No. 2

Amesville No. 3

Muddy Run

Little Muddy Run

Janesville

Smoke Run

Banian

Betz

Train Dispatcher

Branches of Clearfield Branch as follows:

Mapleton

Philipsburg

Sanford

Graham

Liveright

Pennville

Train Dispatcher

Branches of Snow Shoe Branch as follows:

Sugar Camp

Per Se

Grauer

Signalman Milesburg

A portion of Milroy Branch as follows:
Reedsville to Milroy

Signalman
Lewis

D1641. At Denholm trains using coaling tracks must stop before fouling ladder at leaving end unless route is seen or known to be clear of other movements. Eastward freight trains having work at Denholm other than coal and water must receive permission from signalman at Wall before fouling ladder.

Reverse movements on eastward coaling track are made under the direction of signalman at Wall. Reverse movements on westward coaling tracks are made under direction of signalman at Mifflin.

D1642. From time to time devices will be installed approximately 2 miles in the rear of Interlockings for detecting dragging equipment on moving trains.

When device is actuated cab signals will indicate Caution-Slow-Speed between the approach and home signals and through

the interlocking. The most favorable aspect on wayside signals will be Approach.

Trains receiving cab signal indication Caution-Slow-Speed in conjunction with fixed signals indicating Approach must stop as promptly as proper handling of train will permit. Crew must examine train for defects and clearances with adjacent tracks, reporting to Operator as soon as possible.

Trains operating as though non-equipped upon receiving Approach indication on wayside signals between point where device is located and interlocking must not exceed speed of 20 miles per hour and look out for defects in train equipment.

Devices in service as follows:

BANKS—Nos. 1 and 3 tracks, Signal 1160.

PORT —Nos. 1 and 2 tracks, Signal 1368.

JACKS —Nos. 1 and 2 tracks, Signal 1942.

D1643. Each of the following public crossings must be protected by train crews at all times before passing over it:

Tyrone:

Pennsylvania Avenue.

Mount Union:

Jefferson Street, except between 4.30 P. M. to 12.30 A. M. daily not including Sunday.

Washington Street.

Lewistown:

Main Street, except between 2.05 P. M. to 4.35 P. M. and 7.30 P. M. to 9.00 P. M. not to include Sundays and the following holidays: New Years, Memorial, Independence, Thanksgiving and Christmas or on Monday following when any of these holidays fall on Sunday.

Roaring Spring:

First crossing south.

Mt. Dallas:

Crossing, 1.7 miles south over Everett-Saxton Co. side track.

Curry:

Canoe Creek Branch:

Crossing 3158 feet north of Canoe Creek Junction.

Clover Creek Branch:

Crossing over Basalt Trap Rock Co's. siding, one-half mile from Clover Creek Junction.

Hollidaysburg and Petersburg Branch:

Crossing at West end of bridge, St. Clair Lime and Stone siding.

Bellefonte:

Lamb Street, except between 8.00 A. M. to 4.00 P. M. daily.
 High Street.
 Water Street.
 Morris Siding, east of.

Philipsburg:

Maple St.
 Pine Street.
 Presquisle Street.

Madera:

Main Street.

D1644.

Huntingdon.

Eastward trains on No. 1 track when stopped by Home signal, located East of Fourth Street, must stop clear of this crossing.

D1658. While pusher engines are assisting eastward trains over grade at Dix, trainmen must be in position to give signals and to assist in holding the train when necessary to get the slack.

After pusher engine has assisted train over the grade, pusher engine will cut off in the following manner, if the train is in motion:

Close the angle cock on the cabin car, then open knuckle on cabin car, leaving angle cock on front end of engine or rear, as the case may be, open. Trainmen will then cut the air hose between cabin car and engine, which will result in an emergency application of brakes being made on pusher engine stopping same.

Hose cutting devices are furnished on cabin cars, and care should be taken to see that hose is cut and not allowed to pull apart.

D1659. BELLEFONTE CENTRAL R. R.—Trains leave Bellefonte for State College at 9.50 A. M. Arrive at Bellefonte from State College at 2.00 P. M.

The movement of these trains in both directions between the Passenger Station and Junction of Bellefonte Central R. R. a distance of 4/10 of a mile is made on Bellefonte Branch main track, and must be made under full block protection.

D1660. NEW PORTAGE JUNCTION: Crossover at west leg of Y, will be kept set for movements from Duncansville Branch track to Pittsburgh Division westward main track. Switch lamps will show green light and white target when switch is set for normal movements over crossover. Trains must not exceed a speed of 15 miles per hour over the crossover.

D1661. STATE LINE: C & P trains when making movements to or from State Line Yard must obtain permission to use main track from Signalman in control of the block, located at Wye, and report clear to him after movement is completed.

Movements over main track must be made at a speed not exceeding 10 miles per hour, prepared to stop short of other yard movements, extra trains, or obstructions.

S-16-F. AUTOMATIC HIGHWAY CROSSING SIGNALS

Automatic highway crossing signals at grade crossings indicate the approach of a train. These signals do not relieve enginemen from complying with Rules 30 and 31. They operate when trains approach crossings with or against the current of traffic on main tracks only.

Trains moving on sidings or in yards which cross a highway where automatic highway crossing signals are installed, will run carefully, sounding the warnings as prescribed by Rules 30 and 31.

If a train passes entirely over a highway crossing protected by automatic highway crossing signals, it must not move in opposite direction over the crossing unless protection is provided as prescribed by Rule 103a.

To avoid unnecessary operation of the automatic highway crossing signals, switches must not be left open, nor cars left standing on the main track longer than necessary within operating limits of such signals.

When shifting movements are made in the vicinity of a highway crossing protected by automatic highway crossing signals, or when a train is stopped, thereby operating the signals unnecessarily, every effort must be made by trainmen to avoid delay to highway traffic. When it is safe for vehicles or pedestrians to cross the track, the trainman will say "all right" and beckon to cross.

At the following locations—() a device is provided to cut out the operation of automatic highway crossing signals by trainmen. When such device is used, no movement may be made over the crossing by their train unless protection is provided as prescribed by Rule 103a, or the automatic operation of these signals has been restored.

Employees should observe the operation of automatic highway crossing signals and report by wire to the Superintendent any failure to operate properly.

D1662. Electric light indicator has been installed on the instrument cases or adjacent thereto at all Flashing Light Signals protecting road crossings.

A light will be displayed when train is operating the Flashing Light Signals. Absence of light indicates commercial power has failed and that signals will be entirely dependent upon storage battery which may become exhausted and create a dangerous condition if commercial power is not restored within a reasonable period of time.

Employees will report to Superintendent by wire if indicator light is not displayed as train approaches crossing.

D1663. Highway Crossing signals at Barree do not operate after rear of eastward train on No. 3 or No. 4 track has passed signal bridge No. 2121. Trains of less than six cars operating eastward on No. 3 or No. 4 track must approach this crossing prepared to stop.

Cars not coupled to engine must not be moved over State Highway crossing just west of Mill Hall Station.

S17. MOVEMENT BY TRAIN ORDERS.

D1701. While a train order signal is displayed in the direction of an approaching train or trains, it must not be passed by any such train on any track except as provided in the last paragraph of Rule 221 (a).

D1703. Enginemen of helpers must be provided with a copy of orders pertaining to the movement of their trains.

D1704. Rule 221a modified.

To insure correct delivery of all orders handed to trains, signalman will enclose memorandum, reading:

"You should receive orders, No's. _____."

S18. YARDS AND YARD INSTRUCTIONS.

S18A. Rule 97.

D1801. Rule 97 modified. Movements on the main track within yard limits may be made without train orders.

D1802. Rules 93 and 317d amplified. The use of the main track within yard limits authorized by Rules 93 and 317d applies to engines not authorized by time-table schedule or train order to use the main track within yard limits and they may do so without train orders. Under Manual Block operation, before entering the block, the conductor or engineman must notify the signalman when it is desired to make such a yard movement; they must not exceed a speed of fifteen (15) miles per hour, prepared to stop short of other yard movements, extra trains or obstructions; they are not required to protect against other yard movements and extra trains.

Rules 19 and 21 will not apply to such yard movements, but by night at least one red light must be displayed on the rear, and if the movement is made past a block station by day at least one yellow flag must be displayed on the rear to indicate the rear.

Except as hereby provided, all Rules and Special Instructions applicable to trains must be observed.

D1803. Yards indicated by yard limit boards, are located at:

Lewistown—Branch only	Clearfield
Lewistown—Chestnut Street	Curwensville
Reedsville	Bellwood
Tyrone—Branch only	Brookes Mills
Bellefonte	Roaring Spring
Osceola Mills	Mt. Dallas
Philipsburg	Bedford
	State Line

D1808. Westward freight trains dispatched from Altoona Yard, will be governed by the following instructions as to the use of helping engines assisting at the rear:

All helping engines at the rear will assist except that when trains are moving from the Advance Yard at RO, only the engine next to the cabin will use steam while rear of train is moving over the switches at RO. The enginemen must exercise special care to avoid damage to equipment when train is slowed down or stopped by a signal, or from any other cause.

D1809. Altoona—When any Eastward movement is stopped by signal at 9th Street, a member of the crew must communicate with "RO" promptly. When any Eastward movement is stopped at 4th Street, a member of the crew must communicate with 4th Street, South Side, promptly.

Cabins on Eastward freight trains will be cut off as cabin is passing under 9th Street Bridge. If cabin should stall, "RO" must be notified immediately.

Telephones located as follows: On east end of Machine Shop fence, west of 9th Street Bridge and on post on south side, east of 7th Street.

D1810. In yards where for operating convenience ball switches are installed, which permit locomotives to make trailing point movements through them without the switch lever being thrown, gas or gas-electric rail motor cars must not run through them without throwing the lever.

Before a movement is made against the point of a ball switch it must be determined by careful examination that switch point is not being held open by an obstruction or from any other cause.

S19**SPEED TABLE**

Time per Mile Min. Sec.	Miles per Hour	Time per Mile Min. Sec.	Miles per Hour	Time per Mile Min. Sec.	Miles per Hour	Time per Mile Min. Sec.	Miles per Hour
0.36	100	0.48	75	1.12	50	2.24	25
0.38	95	0.51	70	1.20	45	3.00	20
0.40	90	0.55	65	1.30	40	4.00	15
0.42	85	1.00	60	1.43	35	6.00	10
0.45	80	1.05	55	2.00	30	12.00	5

S20.**SPEED RESTRICTIONS**

S20A. Freight cars equipped for passenger train service must have steam heat line, air signal line, steel wheels, E7 safety valve, three position retaining valve, and air brake cylinder—10" minimum diameter.

On account of braking arrangement, when passenger trains have class X-29, or other types of freight cars equipped for passenger train service, they must have passenger equipment cars in proportion to freight cars, not less than:

1 passenger to 1 freight, when lading is between 25,000 and 50,000 pounds.

2 passenger to 1 freight, when lading is between 50,000 and 75,000 pounds.

3 passenger to 1 freight, when lading is between 75,000 and 100,000 pounds.

For two such passenger equipped freight cars, the lading of which is less than 25,000 pounds each, at least one regular passenger equipment car must be included in the make-up of the train.

1 empty passenger equipped freight car to equal 1 passenger car.

The weight of lading in a car in express service loaded with mixed freight normally does not exceed 25,000 pounds—occasional car load shipments exceed 50,000 pounds in which case the weight should be ascertained from the Railway Express Agent.

When the make-up of a passenger train is such that the number of allowable loaded freight cars exceeds the limit above prescribed, the train must be operated under the regulations and speed restrictions which apply to freight trains, as well as the use of retaining valves on grades as required by the Brake and Train Air Signal Instructions No. 99-B-1.

D2001. Maximum Speed.Miles
per hour**Passenger trains****Main Line:**

With passenger engines:

On passenger tracks 70

On freight tracks 50

With freight engines 45

Hollidaysburg and Petersburg Branch. 30

Morrisons Cove Branch:

North of Brookes Mills 30

South of Brookes Mills 25

Martinsburg Branch 25

Bedford Branch 30

Mt. Dallas Branch 25

Clearfield Branch:

North of Park 25

South of Park 35

Bald Eagle Branch:

With passenger engines 60

With freight engines 45

Bellefonte Branch 30

Bellwood Branch:

North of Lloydville 25

South of Lloydville 20

Lewistown Branch:

Between Lewistown and MY.. 15

Milroy Branch:

West of Walnut St., Lewistown 15

East of Walnut St., Lewistown 20

Branches not listed above:

Passenger trains must conform to
speed shown for freight trains.**Freight trains...**

Unless otherwise specified

Main Line:

Arranged service trains:

On passenger tracks 50

On freight tracks 50

With mineral freight:

On passenger tracks 45

On freight tracks 35

Hollidaysburg and Petersburg Branch 30

		Miles per hour
Freight trains..	Springfield Branch.....	20
	Morrisons Cove Branch.....	25
	Martinsburg Branch.....	25
	Bedford Branch.....	30
	Mt. Dallas Branch.....	25
	Clearfield Branch.....	25
	Moshannon Branch.....	20
	Bald Eagle Branch.....	45
	With mineral freight.....	35
	Bellefonte Branch.....	30
	Snow Shoe Branch.....	20
	Bellwood Branch:	
	North of Lloydville.....	25
	South of Lloydville.....	20
	Branches not listed above.....	15
Circus Trains	Main Line.....	30
	Bald Eagle Branch.....	30
	Bellefonte Branch.....	25
	Branches not listed above:	
	Circus trains must conform to speed shown for freight trains.	
Wreck Trains	Main Line.....	}
	Bald Eagle Branch	
	With boom of derrick trailing..	30
	With boom of derrick forward..	20
	Branches not listed above:	
	Wreck trains must conform to speed shown for freight trains.	

		Miles per hour
Trains other than wreck trains handling industrial der- ricks or other pivoted mach- inery.	Main Line:	
	On straight track with Boom trailing	30
	With Boom forward.....	20
	On Curves.....	20
	When operated over territory where the maximum speed for freight trains is less than shown above, conform to the speed of that terri- tory.	

Track cars	Main Line and all Branches:	
	Unless otherwise specified.....	20
	When hauling track cars or trailers	15
	Through turnouts and over switches, frogs, street and highway crossings.....	5
	Hand Cars.....	8

D2002. Speed indicated below must not be exceeded between stations named:

	Tracks	Miles per hour
Main Line:		
Approaching signal located on bracket pole west of JK governing eastward movements	3	15
10th Street, Altoona, to GD.....	3 & 4	40
Between Antis and Tunnel eastward slow freight.....	1 & 2	25
Between Antis and Tunnel eastward ar- ranged service, freight	1 & 2	35
Between Grazier and Forge.....	5	15
Between Deer and Huntingdon	A-C	30
Approaching Block Signal 1905, west of Mount Union.....	4	65
Newport Old Line.....	Running Track	15
Hollidaysburg and Petersburg Branch:		
Crossover movements from Duncansville Branch track to Pittsburgh Division west- ward freight track.....		15
Between JK and 20th Street Altoona, Motor Cars in passenger service.....	1 & 2	20
Movements from Main Line to Branch or from Branch to Main Line		15
Morrison's Cove Branch:		
Brookes Mills		15
Bedford Branch:		
Bedford, Richard Street Crossing		10
Hyndman, within Borough limits		10
Slip Rock 2.3 miles south of Barclay Passing Siding..		15
State Line.....		15

Miles
per hour**Bald Eagle Branch:**

Approaching distant signal located 2660 feet east of
Park, westward movements 45

Clearfield Branch:

Curwensville within Borough limits 6

Clearfield within Borough limits 6

Between Summit and Mills, Freight Trains Northward 20

Between Wilson and east end of main track switch at
14th Street 25

Moshannon Branch:

Houtzdale within Borough limits 6

Milroy Branch:

Milroy Wye 5

Minimum running time for freight trains between Antis
and Banks:

	EASTWARD				WESTWARD			
	Arranged Service Trains		Arr. Serv. Trains with Mineral Frt. and Other Frt. Trains		Arranged Service Trains		Arr. Serv. Trains with Mineral Frt. and Other Frt. Trains	
	Mins.	Sec.	Mins.	Sec.	Min.	Sec.	Min.	Sec.
Antis & Bell	4	00	5	30	3	00	3	00
Bell & Grazier	12	00	17	00	8	30	9	30
Grazier & Spruce	15	30	22	00	13	30	13	30
Spruce & Tunnel	2	30	3	00	2	00	2	00
Tunnel & Jacks	26	00	29	00	26	00	29	00
Jacks & McVeytown	16	30	18	30	16	30	18	30
McVeytown & Lewis	13	00	14	30	13	00	14	30
Lewis & Wall	13	00	13	30	13	00	13	30
Wall & Mifflin	5	30	5	30	5	30	5	00
Mifflin & Vandyke	10	30	11	00	10	30	11	00
Vandyke & Port	14	30	16	00	14	30	16	00
Port & View	19	30	22	00	19	30	22	00
View & Banks	9	30	9	30	9	30	9	30
	2:42:	00	3:07:	00	2:35:	00	2:47:	00

Minimum running time for passenger trains in either direction
between Altoona and Banks:

	Min.	Sec.
Between Altoona and Grazier	14	00
" Grazier and Spruce	13	00
" Spruce and Jacks	21	30
" Jacks and Lewis	23	00
" Lewis and Wall	10	30
" Wall and Mifflin	4	00
" Mifflin and Port	18	30
" Port and Banks	20	30
	125	00

Bald Eagle Branch:

Minimum running time for passenger trains
in either direction:

	Min.	Sec.
Between Park and Port Matilda	13	0
" Port Matilda and Milesburg	17	30
" Milesburg and Wood	11	0
" Wood and Lock Haven	13	30
	55	00

Minimum running time for freight trains
in either direction:

	Min. Sec.
Between Park and Port Matilda	18
“ Port Matilda and Milesburg	24
“ Milesburg and Wood	14
“ Wood and Lock Haven	18
	<hr/> 74

Minimum running time for Clearfield Branch
Passenger Trains:

	Min. Sec.
Between Summit and Vail southward	25

In case of delay enroute the number of minutes delayed must
be added to the minimum time.

CURVES.

	Miles per hour.	Time on Curves (Seconds)
Main Line:		
0.8 mile east of Duncannon	40	36
West of Millerstown, west portion of curve between a point 2,400 feet west of Mile Post 138 and Mile Post 139, Nos. 1 and 4 tracks	60	32
0.3 mile east of Thompsontown, Nos. 1 and 4 tracks	60	22
0.5 mile east of Mifflin	40	25
1.4 miles west of Mifflin	40	18
First curve west of Wall Nos. 1 and 4 tracks	60	24
0.1 mile east of Lewistown	40	21
West of Lewistown Sta. Nos. 1 & 4 tracks	60	25
1.5 miles west of Granville Nos. 1 & 4 tracks	60	31
1.0 mile west of Ryde	50	26
Mapleton Station Nos. 1 and 4 tracks	60	60
Second curve west of Ardenheim	50	15
Petersburg Station Nos. 1 and 4 tracks	65	25
0.5 mile east of Spruce Creek tunnel on No. 1 track	40	17
Between Spruce and Tyrone Station	40	

Hollidaysburg and Petersburg Branch: Miles
Per Hour.

Goodman	25
1200 feet west of Covedale	25
Wye	25
Nineteenth Street, Altoona	20

Morrison's Cove Branch:

First curve south of W	20
Between a point 250 feet north of M. P. 10 from Al- toona and a point 1600 feet north of Reservoir Station	20
Brookes Mills	15

	Miles Per Hour.
Martinsburg Branch:	
Martinsburg Junction (South Leg of Y)	10
Clearfield Branch:	
At Mile Post 6.....	20
Big Fill Curve.....	15
Between Maple and Bridge No. 21.94.....	20
Between Mile Posts 36 and 37.....	20
North end of Bridge No. 38.35.....	15
Moshannon Branch:	
All coal branches.....	15
Bald Eagle Branch:	
Curve at M. P. 30	50
Curve at M. P. 34.....	45
First curve west of Sand.....	45
Second curve east of Sand No. 1 track.....	45
Second curve east of M. P. 39 on No. 1 track.....	45
First curve east of M. P. 44.....	45
Curve at M. P. 45.....	45
First curve west of mile post 54.....	50
On all other curves.....	60
Bellefonte Branch:	
Curve at Bellefonte Station	15
Curve at Morris Branch Jct.....	15
Curve between Milesburg Station and Bridge 31.08..	15
Bellwood Branch:	
Curves at Shaw Run, Point Lookout, Rock Cut Fill and North Rock Cut, between mile posts 4 and 9	12
1st curve south of Mountindale.....	15
1st curve north of Mountindale.....	15

BRIDGES

Location	CLASS OF ENGINE						
	I	M	L	H8 H9			
	MILES PER HOUR						
Main Line:							
132.16 Newport Station	40	50					
232.94 just east of duck- under, East Altoona.....	50						
Hollidaysburg and Peters- burg Branch:							
0.72 West of Petersburg No. 1 Track.....	15						
11.51 East of Mt. Etna No. 1 Track.....	15						
3.92 1 mi. E. of Eldorado....	30	45					
3.48 Eldorado.....	30	45					
Bald Eagle Branch:							
6.17 west end Eagle siding		55					
H. & B. T. M. R. R.							
0.04 Trestle Huntingdon....	30	30	30				
0.12 Trestle Huntingdon....	30	30	30				

D2004.

Maximum speed for movements over any main track turnout or crossover not interlocked 10 miles per hour.

D2006. Maximum speed for various classes of engines, except where otherwise restricted.

CLASS	Light forward.	Backward Light or with trains
A.....	15	15
B-6, B-8 and C-1	20	20
E, G and K.....	50	30
H-6, H-8, H-9 and L	40	30
I	30	25
M	45	25

D2007. Maximum speed for class H-6, H-8, and H-9 engines when running backwards between Vail and Mills, 15 miles per hour.

D2008. Maximum speed for rail motor cars while moving under their own power except where otherwise restricted:

	MILES PER HOUR
Gas-Electric Rail Motor Cars.....	70
Gasoline Rail Motor Cars.....	55

Trains or drafts having gas or gas-electric cars must not exceed a speed of 20 miles per hour.

D2009. Rule 750 amplified. When necessary to clear the main track, engines with any main or side rods disconnected may be moved to a terminal at not exceeding the following speeds:

CLASS OF ENGINES	MILES PER HOUR
N1s-C1-I1s	8
All others	15

If engines with any main or side rods disconnected while on the main track, have interference between crossheads or guide and front crank pin, on account of front wheels getting out of register, enginemen must notify the Superintendent and receive instructions for further movement.

When it is necessary to move a light engine with any main rod or side rods disconnected, from a terminal to another point, the Master Mechanic or Road Foreman of Engines will notify the Superintendent the speed permitted before the engine is dispatched and the latter will then issue the necessary instructions.

D2010. When engines of the L-1s or I-1s types have the front sections of parallel rods removed, the main rods must also be removed, and both crossheads blocked in the extreme forward position by the bolts in the guide provided for that purpose, before the engine is moved. When it is necessary to remove either one of the main rods on these classes of engines the crosshead from which the rod is removed must also be blocked in the extreme forward position before the engine is moved.

D2011. Dead locomotives of a design having two or three pairs of drivers and no trucks, may be moved only at speeds not exceeding twenty miles per hour. Dead locomotives of a design having four pairs of drivers and no trucks, shall be restricted to speeds not exceeding twenty-five miles per hour.

Two or more such dead locomotives in the same train shall be separated by one or more cars.

A locomotive from which any of the wheels have been removed must not be accepted for movement, on its own wheels, in a revenue train.

D2013. Class M-1 or M-1a engines must not be used on train 666.

D2014. Trains consisting entirely of passenger equipment, carrying United States or State Troops, will conform to the speed restrictions applicable to passenger trains; if such trains contain any freight equipment, they will conform to the speed restrictions applicable to freight trains.

D2015. Trains must not exceed 55 miles per hour when scoop water from track trough.

The minimum speed required to scoop water is 20 miles per hour.

Eenginemen must see that scoops are raised before passing the marker at the leaving end of the water troughs.

D2016. All movements on tracks Nos. A, 1 and 2 between eastbound home signal bridge at JK and 4th Street, Altoona Yard, must be made at a speed not exceeding 15 miles per hour.

D2017. All movements with Brown Hoist Ballast Cleaning Machine must be made at a speed not exceeding 20 miles per hour.

D2018. Snow plows must be brought to a stop before meeting or passing a passenger train on adjacent track and must not exceed 4 miles per hour passing a passenger train or a passenger station.

S21.**SIGNAL RULES.**

Rules 282, 283, 284 and 285 modified.

RULE 282

Indication—A train exceeding one-half its maximum authorized speed here must at once reduce to not exceeding that speed. Where a facing switch is connected with the signal, approach that switch prepared to stop. Approach next signal prepared to stop.

Name—Caution-Signal.

RULE 283

Indication—A train exceeding one-half its maximum authorized speed here must at once reduce to not exceeding that speed. Approach next signal prepared to stop.

Name—Approach-Signal.

RULE 284

Indication—Approach next signal at not exceeding one-half the speed authorized for passenger trains at next signal, but not exceeding 30 miles per hour.

Name—Approach-Restricting-Signal.

RULE 285

Indication—Proceed at not exceeding one-half the speed authorized for passenger trains here, but not exceeding 30 miles per hour.

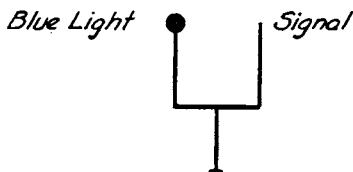
Name—Clear-Restricting-Signal.

D2101. Where the indication shown in Rule 280 is received, Engineman must not resume speed until the track is seen to be clear to the end of the block.

S21A.**SIGNAL ASPECTS.****D2102. SIGNAL ASPECTS NOT STANDARD.**

“JK” Interlocking—Block Station.

Signal on bracket post, governing Eastward movements on No. 3 track, marked by a Blue light on left hand pole of bracket.



Indication—One track intervenes between signal and track it governs.

Name—Signal Mast Bracket Marker.

INDICATIONS.

	1	2	3	4	5	6	7	8	9
A									
B						R Y G	RED YELLOW GREEN		
C									
D									
E									

Aspects shown on line A are in service at Wilson governing eastward and westward movements on No. 5 track.

Aspects shown on line B are in service at New York Central Grade Crossing north of Philipsburg.

Aspect shown on line C is in service on Hollidaysburg and Petersburg, Clearfield and Bellefonte Branches.

Aspects shown on line D are in service at Port Matilda.

Aspects shown on line E are in service at Milesburg.

INDICATIONS.

Stop.

Proceed at not exceeding 15 miles per hour with caution prepared to stop short of train or obstruction.

Proceed.

Approach next signal prepared to stop. When a facing switch is connected with signal approach that switch prepared to stop. A train exceeding one-half its maximum authorized speed must reduce at once to not exceeding that speed.

For passenger trains—Stop and report in accordance with rules 362 or 462. For all other trains proceed with caution prepared to stop short of train or obstruction.

Within interlocking limits, proceed at not exceeding 15 M. P. H. Outside interlockings, proceed Manual or controlled manual block Clear.

Within interlocking limits, proceed at one-half maximum authorized speed at point involved but not exceeding 30 M. P. H. Outside interlocking limits Proceed, Manual or Controlled manual block, Clear.

At "WILSON"—Proceed—Controlled Manual block clear.
(Next signal at stop).

At "WILSON"—Proceed—Controlled Manual block clear
(Next signal at "approach or clear")

S22.

BLOCK SIGNAL RULES.

D2201. When block is occupied by a passenger train, and after a proper understanding exists, shifting movements may be made on the main track within block limits, by permission of the signalman or under caution or permissive signal, to attach or detach cars or engines to or from that passenger train, after it has come to a stop. Rules 317b, 318b, 362 and 417b are modified accordingly.

D2202. Rule 326 amplified. On single track, a train using a siding to meet an opposing train may be authorized to back out immediately after the opposing train has passed, in order to proceed in the opposite direction. The Signalman in control of the block will authorize such moves after consulting with and being authorized to do so by the Train Dispatcher.

D2203. Rule 362 amplified: Trains must not pass a Stop Signal without receiving a Caution Card (Form D), a Clearance Card (Form C), or a train order authorizing them to do so, nor must an engine returning to its train in the Block, pass a Stop Signal without Clearance Card (Form C).

D2204. Rule 364 modified:

A train must not, without permission, proceed on a signal known to have been displayed for a preceding movement, except that when an engine or a train is assisting a train ahead it may accept the signal displayed for the train that is being assisted and may uncouple between block stations.

D2205. Rule 365 amplified. When a train clears a block between block stations or at an unattended Block station the flagman may, when authorized by the conductor or engineman, report clear to the signalman.

D2207. A train stopped at Home or Block Signal at which a telephone is located, may fill out a clearance card, form C, or a caution card, form D, as authorized by the Signalman and then proceed as prescribed by the card.

D2208. Four wheel cabin cars must not be allowed to stand in an automatic block unless the block is occupied by other cars or engine. Necessary care must be used at all interlocking plants, and such cabin cars must not be permitted to stand alone between the signals of a block or interlocking station without permission from Signalman.

S23.**MANUAL BLOCK SYSTEM.**

D2301. Rule 301 to 375, inclusive, are in effect as follows, except that rules, 317a, 317b, 318a and 318b, will apply only on portions of the Division as specified:

Hollidaysburg and Petersburg Branch between PG and Wye.

Morrison's Cove Branch between W and Henrietta.

Martinsburg Branch between Martinsburg Jct. and Martinsburg.

Bedford Branch between Brookes Mills and State Line.

Mt. Dallas Branch between Dunning's Creek Jct. and Mt. Dallas.

Clearfield Branch between Park and Grampian.

Moshannon Branch between Mills and RAM.

Bald Eagle Branch between Park and Sand and between Wood and Lock Haven.

Bellefonte Branch between Milesburg and Bellefonte.

Snow Shoe Branch between Snow Shoe Int. and Snow Shoe.

Bellwood Branch between Bellwood and VG.

Lewistown Branch between Lewistown and MY.

Milroy Branch between MY and Reedsville.

D2302. Rule 317a will apply as follows:

Clearfield Branch-Southward between Summit and Vail.

Northward between Summit and Mills.

Bellwood Branch-Southward between MR and YM.

D2303. Rule 317b will apply on all single track portions of the Division and for movements against the current of traffic, except where Rule 317a applies.

D2304. Rule 318b will apply between PG and Wye

D2305. Hand signals will be used by Signalman Wye to give block indication as follows:

Eastward trains on No. 1 track.

Westward trains on No. 2 track enroute from Hollidaysburg Yard to Pittsburgh Division.

Westward trains via West leg of Y enroute from Altoona to Pittsburgh Division.

S23A. UNATTENDED BLOCK STATIONS.

An unattended block station is a point designated by a sign, indicating the limits of a block, the use of which is controlled by Manual Block System Rules, except as hereby modified.

D2309. Unattended block stations are controlled by the Train Dispatcher or signalman specified in Time Table, or Special Instructions.

The sign indicating an unattended block station will display by day the station call, and in addition by night a red light and a yellow light horizontal; the yellow light next to the main track.

The signalman may give a train oral permission to enter one block, and by the use of Clearance Card (Form K) may authorize a train to pass one or more unattended block stations.

A train receiving Clearance card (Form K) to pass an unattended block station, and arriving at such station after the time for it to become an open block station, must identify the train to the signalman before accepting a signal to proceed at that station, as Clearance card (Form K) is thereby annulled.

Where a block station is attended a portion of the time, and unattended the remainder of the time, during a 24 hour period, the light on unattended sign will be extinguished during the time the station is attended.

Unless otherwise provided, trains must stop at unattended block stations, and conductor or engineman must obtain permission from the Train Dispatcher or signalman to enter, and ascertain condition of the block, and report clear.

If from any cause, conductor or engineman is unable to communicate with the Train Dispatcher or Signalman either by the usual means of communication or the use of commercial lines and should no cause for detaining the train be known, it may proceed through that block on its rights or time-table authority, preceded by a flagman to the next point of communication and report to the Superintendent.

Conductors and enginemen finding an unattended block station sign imperfectly displayed, or absent, must, if practicable, correct it, or replace the light, and report the fact to the Superintendent.

D2310. Clearance Card, Form K, authorizing a train to pass one or more unattended block stations without stopping, is annulled when train clears the main track and reports clear of the block.

D2311. On the following branches: Snow Shoe, Clearfield, Moshannon, Morrison's Cove, Bellwood, Bedford and Mt. Dallas unattended block station signs will not be lighted.

(To be printed on green paper, size 5 1/3 x 3 1/2)

FORM

K

THE PENNSYLVANIA RAILROAD CLEARANCE CARD

FORM

K

Block Station _____ M. 19 _____

To Conductor and Engineman: Train _____

Proceed at _____ as though _____ signal was displayed.

Report clear at _____.

Signalman.

The signalman may issue this card only when authorized by the Superintendent. Before issuing it, the signalman must have proper understanding with other signalmen, if any, having authority over block mentioned, and must know that blocks mentioned above have been duly reported clear of opposing trains, and clear of trains that may not be followed in the same block by the train addressed.

The conductor and engineman receiving this card properly filled out and signed, or authorized by the signalman to fill it out, may proceed as directed above.

S24. CONTROLLED MANUAL BLOCK SYSTEM.

D2401 Rules 401 to 473 inclusive, except Rules 417a and 417b, as amplified by special instruction D3443, are in effect as follows:

Between RO and BO on No. 3 track. New Rule 418.

Between Tunnel and Forge on No. 2 track. New Rule 418.

Between Wye and Eldorado. New Rule 417.

Rules 401 to 473 inclusive except Rule 417a as amplified by special instruction, D3443 are in effect as follows:

Between Forge and Grazier No. 5 track. Rule 417b.

Between Wilson and Park. Rule 417b.

Between Sand and Wood Nos. 1 and 2 tracks. Rule 417b.

D2402. Rule 465 amplified. When a train clears a block between block stations the flagman may, when authorized by the conductor or engineman, report clear to the signalman.

D2403. Trains having work to do between Wye and Eldorado or between Sand and Wood must so report before accepting the signal, stating the time required to do the work.

At Gulf Refining Co.'s siding, Atlantic Refining Co.'s siding, Eldorado Milling Co.'s siding, Altoona Packing Co.'s siding, American Oil Co.'s siding and Sun Oil Co.'s siding on Hollidaysburg and Petersburg Branch and Sand siding east of Sand on Bald Eagle Branch a train reporting clear must not again enter the block without a train order authorizing it to do so, and in addition thereto, permission from the signalman, neither of which supersedes time table superiority unless the train order specifically so states. Rule 465 modified.

S25. AUTOMATIC BLOCK SYSTEM

D2501. Except as otherwise provided by Cab Signal Rules Special Instructions, Rules 501 and 505, 505b to 514 inclusive, are in effect as follows:

Main Line between Banks and Tunnel No. 1, 2, 3 and 4 tracks.
 " " " Tunnel and Forge No. 1, 2 and 3 tracks.
 " " " Forge and Antis No. 1, 2, 3 and 4 tracks.
 " " " Antis and JK No. 3 & 4 tracks.
 " " " JK and BO track A and Nos. 1, 2, 3 and 4 tracks

HOLLIDAYSBURG AND PETERSBURG BRANCH:

Between JK and Eldorado No. 1 and 2 tracks.

" Eldorado and Wye Main track.

S25A. Rule 505 (a).—

D2502. Double, Three, or More Tracks. In automatic Block System territory at interlockings where there is no Block Signal that governs the use of the block from the limits of the interlocking, the Home signal governing the use of routes leading to that block will, in addition, govern the use of the block with the current of traffic to the next Block signal beyond the interlocking.

D2503. Rule 505 (e) amplified. When a train clears a block between block stations the flagman may, when authorized by the conductor or engineman, report clear to the signalman:

D2505. In automatic Block System territory, if, in connection with a train using hand operated main track switches, the entire movement clears a block, and the switches used that affect that block are restored to normal position, thereby clearing signals affecting that block, regardless of whether the train has or has not been reported clear of the block, it must not again enter that block without permission from the signalman, unless otherwise instructed by the Superintendent.

D2506. Rule 509 (b) will apply to movements in either direction on No. 2 track between Forge and Spruce, also on single track between Eldorado and Wye in connection with controlled manual block operation.

D2507. Unless it is known that gasoline motor cars and cars of similar type or construction will operate automatic signals and shunt track circuits at interlockings and electric switch locking, they must not be operated in automatic block system territory unless special provision is made for Manual Block protection, and such gasoline motor cars, and cars of similar type or construction, must not be permitted to stand alone between the signals of a block or interlocking station without permission from Signalman; Signalmen and Levermen must assure themselves that such cars have cleared the switches of an interlocking before attempting to operate them.

S25B.

CAB SIGNAL RULES.

Definitions

Cab Signal—Four-indication position light signal located in engine cab indicating a condition affecting the movement of a train.

Cab Signal System—A series of consecutive blocks governed by cab signals operated by electric agency actuated by a train or by certain conditions affecting the use of a block and used in conjunction with block and interlocking signals.

Equipped Engine—An engine equipped with cab signal apparatus, including whistle and acknowerdger, in operative condition for the direction in which it is to move.

Equipped Train—A train operating under cab signal protection.

D2508. Cab Signal System in service on main tracks operating with current of traffic:

Eastward—between JK and Antis, No. 3 track.

between Antis and Forge, Nos. 1 and 2 tracks.

between Forge and Tunnel, No. 1 track.

between Tunnel and View, Nos. 1 and 2 tracks.

between View and Banks, Nos. 1 and 3 tracks.

Westward—between Banks and View, Nos. 2 and 4 tracks.

between View and Tunnel, Nos. 3 and 4 tracks.

between Tunnel and Forge, Nos. 2 and 3 tracks.

between Forge and Antis, Nos. 3 and 4 tracks.

between Antis and JK, No. 4 track.

Against current of traffic:

Eastward—between Forge and Tunnel, No. 2 track.

Cab Signals will not indicate conditions ahead when engine is—

- (a) Moving against the current of traffic (unless track is equipped for movement against current of traffic).
- (b) Pushing cars.
- (c) Not equipped for backward running and is running backward.

Cutting-in sections located:

For Westward trains:

Tracks Nos. 3 and 4 from the Westward Home signals for "BO" to Block Signals 2373 on Eastward Home Signal Bridge for "BO."

For Eastward trains:

JK—From a point 245 feet west of block signal on 9th St. bridge governing eastward movements on No. 3 track, to the signal.

Antis—From a point 1000 feet west of the eastward distant signal on No. 1 freight track to the distant signal.

The following rules are in effect:

1. Except as provided in paragraph 5-a, a non-equipped engine or train must not be dispatched from any of the following terminals or Divisions for movement in cab signal territory:

Altoona.

East Altoona.

Lewistown.

Huntingdon.

Tyrone.

Bellefonte.

Osceola Mills.

2. The required departure tests must be made by the engine-man before entering cab signal territory.

Testing sections, additional to those at terminals, located:

Tyrone—Test circuit three hundred feet in length, located on west leg of "Y" at passenger platform, extending one hundred feet beyond west end of platform.

West end "AC" Yard Tyrone—Test circuits located on No. 5 track east of dwarf signal governing movement into Grazier interlocking, extending eastward to first ladder switch; and on pull-out track north side of water tank opposite Grazier tower, extending eastward two hundred feet.

3. Unless authorized by the Superintendent, an equipped engine must not enter cab signal territory without having cut-out cock fixed in cut-in position.

4. When Cab Signal and fixed signal aspects conflict, the more restrictive indication governs, except when there is a failure in the cab signal apparatus or when cab signal aspects conflict with fixed signal aspects at two fixed signal locations in succession thereby indicating a probable defect in the cab signal apparatus, a train may proceed as a non-equipped train, governed by fixed signal indication, to the next point of communication, report and be governed by instructions from the Superintendent. When there is a failure in the cab signal apparatus, Engineman may cut out the warning whistle if it continues sounding, after he has acknowledged.

5. Unless authorized by the Superintendent, a non-equipped train must not exceed speed as follows:

Freight Trains 23 miles per hour.

Passenger Trains 35 miles per hour.

Such movements must not be made, except when authorized by the Superintendent.

5a.—

6. Cab signal aspects, indications and names are shown in Rules 278, 283, 284, 286. Cab signal indications do not supersede fixed signal indications, except when cab signal changes to a more restrictive or a more favorable aspect after passing a fixed signal.

7.—

8. If, after passing a fixed signal, cab signal changes from Caution-Slow-Speed to a more favorable aspect, speed must not be increased until the train has run its length.

9. Except within interlocking limits, if cab signal changes to Caution-Slow-Speed, a train or engine may proceed at not exceeding 15 miles per hour expecting to find a train in the block, broken rail, obstruction, or switch not properly set. A train or engine exceeding 15 miles per hour must at once reduce to not exceeding that speed.

If, after entering interlocking limits under a more favorable fixed signal indication than that given by Clear-Slow-Speed signal, cab signal changes to Caution-Slow Speed, stop, and secure permission from signalman before moving in either direction.

D2509. Engines dispatched from points in Cab Signal territory to Central Penn'a Division points or to points on the Bellwood Branch where Test Circuits are not provided must have Cab Signal equipment cut in for the entire trip.

Engines dispatched to Osceola Mills, Southport, Northumberland or Wilkes-Barre must have Cab Signals cut out in "AC" Yard, Tyrone.

Engines dispatched from Osceola Mills, Southport, Northumberland or Wilkes-Barre must make Departure Test and have Cab Signal equipment cut in before departure.

S25C. Rule 511a.

When moving from main track to siding, switch must remain open until train is clear, and when moving from siding to main track, switch must be opened before main track is fouled.

S25D. GRADE SIGNALS

D2510. LOCATION OF GRADE SIGNALS.

MAIN LINE

Nos. 1 and 2 tracks first signal bridge east of McVeytown—Signal No. 1766.

Nos. 3 and 4 tracks Petersburg to Tunnel, excepting the first signal west of Petersburg—No. 2091.

Nos. 2 and 3 tracks Tunnel to Forge.

No. 3 and 4 tracks Forge to Antis.

A tonnage freight train, as referred to in Rule 277, is a train having 80 per cent or more of the authorized engine rating, or, having in excess of 90 cars, including the cabin car.

Before entering territory where Grade Signals are in use, conductor must notify engineman of authorized engine rating for that trip, exact tonnage, or number of cars in train and changes due to setting off or picking up cars.

S26. INTERLOCKING RULES

S26A. Rule 663 amplified. Trains or engines must not pass an Interlocking Stop-signal without receiving Clearance Card (Form C) or train order. The signalman may authorize a conductor or engineman to fill out Clearance Card (Form C).

D2602. Rule 362: Form "C" Card, amplified to read:

This card must be used only in case of failure of Block Signal, Interlocking Signal, or Home Signal referred to in Paragraph 3, or when signal cannot be displayed for an engine returning to its train.

D2603. Trains having work at Interlockings, must stop so that the entire train will stand clear of the Interlocking after cars that are picked up have been added to the train, thereby leaving the switches free to be operated for any movement desired.

D2604. Interlocking Plant:

Operated by:

Deer

Huntingdon

Tunnel

Spruce

Eldorado

Wye

Sand

Wood

S27. Non-interlocking switches connected with Manual and Controlled Manual Block Station Signals.**D2701.**

BLOCK STATION	NON-INTERLOCKED SWITCHES CONNECTED
Wall	<p>Electric lock, switch leading from No. 1 track to Vincent Lumber Company's Siding.</p> <p>Electric lock, crossover leading from east end of "A" coaling track to No. 1 track.</p>
Bell	<p>Electric lock, switch leading from No. 4 track to Bellwood Branch west of Bellwood Passenger Station.</p> <p>Electric lock, switch leading from No. 4 track to yard track east of Bellwood Freight Station.</p>
Wilson	<p>Electric lock, switch at east end of Wye.</p> <p>Electric lock, west end of cross-over from No. 5 track to siding, east of passenger station.</p> <p>Electric lock, switch leading from main track to siding, Receiving yard, 14th St.</p> <p>Electric lock, switch leading from main track to siding, Classification yard north of 14th St.</p> <p>Electric lock, switch leading from No. 5 track to No. 6 yard track west of Wilson.</p> <p>Electric lock, switch leading from No. 5 track to No. 6 yard track east of Grazier.</p>
Port Matilda	<p>Electric lock, switch leading to McFeeley Brick Co. siding.</p>
Wood	<p>Electric lock, Switch west end Howard Passing Siding.</p> <p>Electric lock, Switch east end Howard Passing Siding.</p>

D2702. When necessary for trains to enter McFeeley Brick Company Siding at Port Matilda, trainmen must receive permission to use the switch, and when trains leave the siding to enter main track, trainmen, after restoring main track switch to normal position, will notify the signalman that they have done so.

S28. TRACK CARS, ETC.

(a) General definition of track car—amplified:

Track car—A hand car, or self-propelled car or truck, which may be manually moved to or from the track.

(b) Rule 829 paragraph 10, amplified:

Track cars must not be operated except as prescribed by Rule 80 when so provided in the time-table.

(c) Rule 206, amplified:

The prefix H. C. to hand car running number will be used when issuing train orders or instructions to drivers of hand cars.

(d) Rule 80, amplified:

When track cars are approaching road crossing at grade, the trackman's whistle or other alarm signal provided for the purpose must be sounded before reaching the crossing, and track cars must approach all such crossings prepared to stop.

(e) Track cars must be equipped with Flagman's signals as follows:

Day Signals—two red flags, torpedoes and fusees.

Night Signals—two red lanterns, two white lanterns, torpedoes and fusees.

(f) Fifth paragraph of Rule 80 amplified as follows:

"They will not be authorized to represent or run as a section of a schedule; and under Manual Block System Rules will be operated as a train other than a passenger train, and may be admitted by Train Order and under Stop block signal to a block following a passenger train in Manual Block territory."

D2801.

(1) Track cars will be operated over entire Division as provided for by Rule 80.

(2) Fourth paragraph of Rule 80 amplified as follows:

"They must not be used in Controlled Manual Block System territory or in Automatic Block System territory unless special provision is made for manual block protection."

(3) In Controlled Manual Block System territory and Automatic Block System territory, signalmen will not permit trains or track cars to follow track cars without instructions from the Superintendent. He must also comply with Rule 221c when a track between his block station and the next block station in advance is occupied by a track car.

(4) In the application of Automatic Block System rules to track cars, signalmen must not give permission, nor a fixed signal, authorizing a track car to enter a block at any point without authority from the Superintendent.

(5) To avoid delay to passenger trains, track car extra must clear main track and report clear to the Superintendent, or signalman before a passenger train is due to leave the block station in the rear.

(6) Where Automatic Block System rules for single track, Nos. 551 to 564, inclusive, are in effect and opposing movements are not protected by controlled manual block system rules, track cars must clear main track and report clear to the Superintendent, or signalman before an opposing or following passenger train is due to enter block at a block station, signalman will not permit any train to enter a block occupied by a track car without instructions from the Superintendent.

(7) Track cars must not pass an attended block station without permission from the signalman.

(8) Track cars will not operate automatic or semi-automatic signals, or highway crossing warning signals, neither will they shunt track circuits at interlockings. Electric switch locking must not be depended upon for protection to movements made by such cars; signalmen and levermen must assure themselves that such cars have cleared the switches before operating same.

(9) Pony trucks must use the least important track available, and be loaded so as to permit prompt removal from the track upon the approach of a train; when practicable they must run on the rail nearest the ditch, and on double, three, or more tracks, on a track against the current of traffic; they must not use a track under conditions when an approaching train can not be seen in ample time to clear the track for the train, except in cases of emergency and then not until after a flagman has been placed in position where train can be stopped before reaching the pony truck. In yards they must not be used except by permission of the yard master and under proper protection.

(10) Velocipedes to be operated by authority of the Superintendent.

(11) Signalmen will not admit a one-man track car to a block which is occupied by an approaching train, nor permit any train to enter a block which is occupied by a one-man track car without instructions from the Superintendent.

(12) The last four numerals of the present M. W. number shall be known as the running number.

D2802. Burro Crane—A motor driven car used to lay rails, etc. Such equipment must not be depended upon to operate automatic signals, nor shunt track circuits at interlockings and electric switch locking. They cannot be easily or quickly moved to or from track. They will be numbered for identification, as a running number, and when no car number is used, the last four figures of the badge plate should be used.

The prefix B. C. to number will be used when issuing train orders or instructions to drivers.

All rules and special instructions governing the movement of track cars will apply to Burro Cranes.

D2803. In the movement of track cars at interlockings, the following instructions will govern: The signalman before clearing the signal for movement of a track car through, or giving permission for the movement within the interlocking, must secure all affected switch levers with standard blocking device, the levers to remain secured in this manner, until the driver of the track car reports that the movement has been completed. The driver of the track car must report immediately to the Signalman when the movement has been completed.

Pony trucks may shunt track circuits and must not be used within interlockings except by permission of signalman.

S29. ENGINE AND OTHER EQUIPMENT RESTRICTIONS.

D2901. Equipment as designated must not be permitted on tracks, bridges, etc., named:

LINE, BRANCH, SIDING OR "Y"	CLASS OF ENGINE									
	H8	E3	H6			K2				N1
	H9	E5		G5	E6	K4	L1	M1	I1	C1
	H10	G4				K5				N2
Main Line— Banks to Junction Pittsburgh Division West of 24th St., Altoona										
Holidaysburg and Petersburg Branch										
Morrison's Cove; Bedford; Mt. Dallas; Clover Creek; Springfield; Canoe Creek; Milroy; Bellwood; Fairbrook Branches						X	X	X	X	X
Lewistown Branch from Lewistown to MY.								X	X	X
Clearfield and connecting Branches						X	X	X	X	X
Moshannon and connecting Branches						X	X	X	X	X
Bald Eagle Branch										
Bellefonte Branch								X	X	X
Snow Shoe and connecting branches and sidings						X	X	X	X	X
(1) Western Maryland— State Line to Cumberland	X	X	X	X	X	X	X	X	X	X
Duncannon—Old Line Except running track to Freight Station								X	X	X
Newport— Public Delivery tracks								X	X	X
Millerstown— Public Delivery tracks								X	X	X
Vandyke Silica Brick Co.							X	X	X	X
Port Royal— Breyer Ice Cream Co.						X	X	X	X	X
Port Royal— Other Freight Station tracks							X	X	X	X

LINE, BRANCH, SIDING OR "Y"	CLASS OF ENGINE										
	H8 H9 H 10	E3 E5 E4	H6	G5	E6	K2 K4 K5	L1	M1	I1	C1	N1 N2
Mifflin— Commons Yard.....						X	X	X	X	X	X
Yard track and switches east of Pas- senger Station.....							X	X	X	X	X
Denholm— Circle, Hill and coal storage tracks.....						X	X	X	X	X	X
Hawstone— Hill track.....						X	X	X	X	X	X
Horningford— Mifflin Sand Co.....		X		X	X	X	X	X	X	X	X
McVeytown— H. O. Andrews & Son.....		X		X	X	X	X	X	X	X	X
Vineyard— Penna. Glass Sand, Hatfield Plant.....		X		X	X	X	X	X	X	X	X
Mt. Union— Tracks East of Frank- lin Street; Freight station track; E. A. Beaver Co; Harbison-Walker....		X		X	X	X	X	X	X	X	X
Mapleton— Siding West of Bridge Street; Bridgeport siding at Tool House Curve....		X		X	X	X	X	X	X	X	X
Huntingdon— Juniata Supply Co.; Penn Central; H. & B. T. Station Tracks; J. C. Blair; Supplee-Wills - Jones; Freight Station tracks; Huntingdon Specialty Co.; Pierce-Butler & Pierce.....		X		X	X	X	X	X	X	X	X
Penn Central Coal Trestle.....	X	X	X	X	X	X	X	X	X	X	X
Warrior Ridge— Penn Central.....						X	X	X	X	X	X
Petersburg— Station track.....						X	X	X	X	X	X
Barree— Baldridge siding.....								X	X	X	X
Spruce Creek— Freight Station.....								X	X	X	X

LINE, BRANCH, SIDING OR "Y"	CLASS OF ENGINE										
	H8 H9 H10	E3 E5 E4	H6	G5	E6	K2 K4 K5	L1	M1	I1	C1	N1 N2
Union Furnace— American Lime and Stone.....						X	X	X	X	X	X
Birmingham— Station.....						X	X	X	X	X	X
Tyrone Forge— Tyrone Lime & Stone.....						X	X	X	X	X	X
Wilson Chemical Co.		X		X	X	X	X	X	X	X	X
Altoona Territory											
City Ice & Beverage Co. 18th Street.....	X	X	X	X	X	X	X	X	X	X	X
Abelson Iron & Metal Co. 18th Street.....	X	X	X	X	X	X	X	X	X	X	X
Altoona & Logan Valley Elec. Rwy. (#1 & 2)....	X	X	X	X	X	X	X	X	X	X	X
Freihofers Baking Co., 28th Street.....	X	X	X	X	X	X	X	X	X	X	X
Rescue Mission, 21st Street.....						X	X	X	X	X	X
Altoona City, 20th St...	X	X	X	X	X	X	X	X	X	X	X
Altoona Iron Co., 30th Street (#1).....						X	X	X	X	X	X
Altoona Iron Co., 30th Street (#2 & 3).....	X	X	X	X	X	X	X	X	X	X	X
Altoona Packing Co. Canan's Crossing....						X	X	X	X	X	X
Altoona Pipe & Supply 21st Street.....						X	X	X	X	X	X
A. L. Anderson & Bro. South Altoona.....						X	X	X	X	X	X
Armour and Co., 18th Street (#2).....	X	X	X	X	X	X	X	X	X	X	X
Atlantic and Pacific Tea Co., 29th Street.....	X	X	X	X	X	X	X	X	X	X	X
Atlantic Refining Co., 27th Street.....	X	X	X	X	X	X	X	X	X	X	X
Atlantic Refining Co., west of Canan's Cross- ing.....						X	X	X	X	X	X
T. M. Biddle, 19th St	X	X	X	X	X	X	X	X	X	X	X

LINE, BRANCH, SIDING OR "Y"	CLASS OF ENGINE										
	H8 H9 H10	E3 E5 G4	H6	G5	E6	K2 K4 K5	L1	M1	I1	C1	N1 N2
Blair Ice and Cold Storage Co., 30th Street..	X	X	X	X	X	X	X	X	X	X	X
National Biscuit Co., 26th St.....	X	X	X	X	X	X	X	X	X	X	X
National Biscuit Co. & Loose-Wiles Biscuit Co., 27th Street.....	X	X	X	X	X	X	X	X	X	X	X
Citizens Ice Co., 18th Street.....	X	X	X	X	X	X	X	X	X	X	X
William Conroy, 10th Street.....	X	X	X	X	X	X	X	X	X	X	X
Curry Canan Co., (#1 & 2) 19th Street.....	X	X	X	X	X	X	X	X	X	X	X
Glass Casket Co.....						X	X	X	X	X	X
Filer's Storage Co., 19th Street.....	X	X	X	X	X	X	X	X	X	X	X
East Side Coal & Supply Co., 8th Street.....	X	X	X	X	X	X	X	X	X	X	X
Eldorado Milling Co. Canan's Crossing....						X	X	X	X	X	X
Freedom Oil Company, Altoona Public Track.....						X	X	X	X	X	X
L. W. Flannigan, 5th St.	X	X	X	X	X	X	X	X	X	X	X
Gulf Refining Company, Canan's Crossing....						X	X	X	X	X	X
General Builders Supply Co., (#1 & 2) 17th St.	X	X	X	X	X	X	X	X	X	X	X
Pintsch Gas 9th Street	X	X	X	X	X	X	X	X	X	X	X
Spur Distributing Co. 18th Street.....						X	X	X	X	X	X
Independent Oil Co., 32nd Street.....	X	X	X	X	X	X	X	X	X	X	X
J. C. Ivory & Son, 31st. Street.....						X	X	X	X	X	X
Juniata Side track	X	X	X	X	X	X	X	X	X	X	X
City Ice & Beverage Co., 19th Street.....	X	X	X	X	X	X	X	X	X	X	X
Economy Grocery Co., 19th Street.....	X	X	X	X	X	X	X	X	X	X	X
Eldorado Public Delivery Track.....						X	X	X	X	X	X
John McGinley, 21st St.						X	X	X	X	X	X

LINE, BRANCH, SIDING OR "Y"	CLASS OF ENGINE										
	H8 H9 H 10	E3 E5 G4	H6	G5	E6	K2 K4 K5	L1	M1	I1	C1	N1 N2
L. B. Mackey, 10th St.	X	X	X	X	X	X	X	X	X	X	X
Leonard Miller, 8th St..	X	X	X	X	X	X	X	X	X	X	X
Peoples Natural Gas Co., 1st Street.....	X	X	X	X	X	X	X	X	X	X	X
Penn Central (#1) 18th Street & #2 at 20th St.							X	X	X		X
George Reighard, 31st Street.....						X	X	X	X	X	X
Schwarzenbach Huber Co., 26th Street.....	X	X	X	X	X	X	X	X	X	X	X
Central Pa. Oil Co., South Altoona.....						X	X	X	X	X	X
Shaffer Stores Co., 7th Street.....	X	X	X	X	X	X	X	X	X	X	X
Sinclair Refining Co., Kettle Street.....		X		X	X	X	X	X	X	X	X
Standard Sanitary Mfg. Co., 16th Street.....	X	X	X	X	X	X	X	X	X	X	X
Standard Supply and Equipment Co., 21st Street.....						X	X	X	X	X	X
H. L. Stultz and Bro., 18th Street.....	X	X	X	X	X	X	X	X	X	X	X
Sun Oil Co., East of Canan's Crossing....						X	X	X	X	X	X
Swift and Co., 19th St..						X	X	X	X	X	X
United Home Dressed Meat Co.....	X	X	X	X	X	X	X	X	X	X	X
McGraw Bros., 20th Street.....	X	X	X	X	X	X	X	X	X	X	X
Sears Roebuck Co., 17th Street.....	X	X	X	X	X	X	X	X	X	X	X
American Oil Co., East of Canan's Crossing..						X	X	X	X	X	X
Bald Eagle Branch: Mill Hall— General Refractories Eagle Plant; Brick Works; Clinton Co. Fire Brick; Lumber side track...					X	X	X	X	X	X	X
Sheffield Farms.....								X	X		X
N.Y.C. Junction track								X			X

LINE, BRANCH, SIDING OR "Y"	CLASS OF ENGINE										
	H8	E3	H6			K2					N1
	H9	E5		G5	E6	K4	L1	M1	J1	C1	N2
	H10	G4				K5					
Beech Creek— Freight Station								X			X
Hildebrand Lumber								X			X
Howard— Sheffield Farms; Freight Station								X			X
Back Track, Station; Oil side track					X	X	X	X	X	X	X
Mt. Eagle— Sand side track; Freight Station								X			X
Curtin— Freight Station								X		X	X
Milesburg— Storage track; Old Scale track								X			X
Snow Shoe Int.— Summerville side track								X			X
Unionville— Freight Station								X			X
Julian— Freight Station								X			X
Port Matilda— McFeeley Brick Co.								X	X	X	X
Clay siding							X	X	X	X	X
Tyrone— West Virginia Pulp & Paper Co.	X	X		X	X	X	X	X	X	X	X
East Tyrone Wye								X			X
(2) 13th&14th St. Coal Yd. at Washington Av; (2) 13th St. Coal Yd. at Washington; (2) Bayer and Gillam Bros.	X	X	X	X	X	X	X	X	X	X	X
Mosers side track	X					X	X	X	X	X	X
All Freight Station tracks	X	X		X	X	X	X	X	X	X	X
Bellefonte Branch: Bellefonte— Titan Metal Co.; Wagners side track; Mussers side track					X	X	X	X	X	X	X
Back Track, passenger station; Sheffield Farms								X	X	X	X
All other side tracks					X	X	X	X	X	X	X

LINE, BRANCH, SIDING OR "Y"	CLASS OF ENGINE										
	H8 H9 H10	E3 E5 G4	H6	G5	E6	K2 K4 K5	L1	M1	I1	C1	N1 N2
Milroy Branch: Naginey— Bethlehem Mines Corp. bridge at West end of loaded track . . .				X	X	X	X	X	X	X	X
Kishacoquillas Valley Railroad tracks	X	X	X	X	X	X	X	X	X	X	X
Clearfield Branch: Curwensville— Roaring Run Stone Co.,	X	X	X	X	X	X	X	X	X	X	X
Hollidaysburg and Petersburg Branch: Ganister— St. Clair Limestone Co.								X	X	X	X
All other Individual Sid- ings					X	X	X	X	X	X	X
(2) Hollidaysburg— McLanahan Stone Machinery Co., track; Blair Co. Oil & Supply Co.; Thermic Ice & Coal Co.	X	X	X	X	X	X	X	X	X	X	X
Morrisons Cove Branch: Loop— Coal Trestle	X	X	X	X	X	X	X	X	X	X	X
Bedford Branch: Cessna— Freight Station	X			X	X	X	X	X	X	X	X
Bellwood Branch: Coalport— Cambria Smokeless Col- liery, back track	X	X	X	X	X	X	X	X	X	X	X

NOTE—X indicates class of engine that must not be used.

- (1) On account of Wills Creek Bridge at GC Junction the use of an engine heavier than B 8 class is prohibited. Maximum weight of engine in working order, exclusive of tender, 173,000 pounds.

- (2) On account of sharp curvature no engines are allowed.

S30.———

S31. EMPLOYEE'S REGISTER.

S31A. When reporting for duty, trainmen, enginemen and firemen in road and yard service must personally sign a register in the presence of Assistant Train Master, Yard Master, Station Master, Agent, Engine House Foreman or their representatives, or Operator, when register is signed at a Block Station, who will witness the signatures.

D3101. Registers for this purpose are located as follows:
ALTOONA:

Passenger Crew Dispatcher's Office.
 Fourth Street, S. Side, Asst. Yard Master's Office.
 JS Asst. Yard Master's Office.
 RV Crew Dispatcher's Office.
 WJ Asst. Yard Master's Office.
 ND Asst. Yard Master's Office.
 Engine House, East Altoona.

STATE LINE:

Agent's Office.

TYRONE: Enginemen and Firemen also Road and Yard Trainmen register at Yard Office.

OSCEOLA MILLS: Enginemen and Firemen register at Engine House Foreman's office.
 Trainmen register at Yard Office.

BELLEFONTE: Freight Station.

HUNTINGDON: Oil House Office.

MOUNT UNION: Freight Station.

LEWISTOWN: Yard Office.

NEWPORT: Supervisor's Office.

D3102. Passenger train crews are required to report for duty as follows:

FOR THROUGH TRAINS—Train crews at Altoona must register not more than one hour and not less than fifteen minutes before their trains are expected to arrive, and must be on the platform to receive train five minutes before its arrival.

FOR TRAINS ORIGINATING AT ALTOONA—Train crews must register not more than one hour and not less than fifteen minutes before leaving time, and must be at train at least ten minutes before leaving time.

MOTOR CARS—Train crews must register not more than one hour and not less than thirty minutes before leaving time.

When ordered to deadhead on passenger trains passenger trainmen will report and register ten minutes in advance of schedule leaving time of the train on which they are to deadhead.

D3103. At Altoona, Conductors must know whether or not their full crew is on hand at the proper time and report promptly any shortage to the Station Master so that a substitute may be provided.

D3104. All trainmen arriving at or leaving Altoona, whether deadheading or in service, must register personally.

D3105. At other points train crews will be required to report for duty in advance of leaving time as follows:

Lewistown.....20 min.

D3106. On short runs, where the time between trips is less than the time required to report for duty, it will be computed as continuous time.

D3107. Passenger engine crews are required to report ready for duty before schedule leaving time of train as follows:

Altoona—Engine Crews receiving engine on storage track..... 1 hour

Through Engines—

Unless otherwise ordered, crews receiving their engines at Altoona Station will report in person to engine dispatcher thirty (30) minutes in advance of the scheduled leaving time of the train, and must be on the station platform on arrival of train to promptly relieve inbound crews and prepare engine for trip without delay. The inbound enginemen and firemen of through engines will confer with the outbound enginemen and firemen and give them all the necessary information as to the condition of the engines.

East Altoona—Main Line and Branch Service, including East Slope Helping service, and extra crews ordered for through passenger helping service, westward, one hour and 30 minutes, 30 minutes for reporting and preparing engine and one hour for the movement of the engine from East Altoona to Altoona Station.

Lewistown..... 30 min.

D3108. Freight engine crews in road service, ordered at Altoona, will report 15 minutes in advance of time for which crew is ordered.

The following instructions with respect to preparation and care of locomotives will be effective where engine preparers are not provided:

The lubricators will be filled, the trip allowance of engine oil and the proper amount of hard grease will be put on the engine and the hand oiler will be filled, the hard grease cups will be filled and the caps secured. The headlight, marker and hand lamps, will be in proper condition, sand traps and sand pipes will be free of obstruction, and the stoker will be in working order and all repairs necessary to the machinery, tender and the appliances thereto will have been made. A complement of tools will be in the place provided, if not, an MP-10A will be placed in the tool locker showing the missing articles. The fire will be in condition for preparation for the road and the boiler will have a sufficient head of steam to permit the engine to be moved promptly.

When an engine crew takes charge of an engine, the engineman will try the air brake, note the pressure on the air gauges, the pressure on the steam gauge, examine the fire box, test the injectors and water pump, try the gauge cocks, blow out the glass water gauge, start the generator and test out the lights and assure himself that there is sufficient water in the tank.

The fireman will inspect the ash pan, the grates, start the lubricator to feed, try the stoker, examine the water in the tank, see that the hand lamps and flags are in condition for use,

also see that the required number of torpedoes and fusees are on the engine.

The crew is relieved of all other inspection.

The engineman will oil the various parts that should be lubricated with machinery oil, including the filling of the valve stem and piston rod cups, but if the oiling is not finished before the leaving time of the engine, this part of the work will be deferred until a more opportune time, but the oiling must be done before leaving the departure yard.

The engine crew will be responsible for taking proper care of the engine while enroute and for making the necessary inspection and reports at the end of the trip.

At Altoona it is expected that engines with cabin cars of all crews dispatched westbound will pass "AL" not later than five (5) minutes after the ordered-for time of the crew. It must be understood that at least one trainman will accompany the hauler or helper engine from engine house to the yard.

S32. PERSONAL INJURIES

S32A. Emergency calls for Surgeons will have preference over other business except train orders.

Employees injured on company property, or while on company business, will be treated by the nearest physician named below, without cost, throughout their disability. If hospital attention is necessary, they should be sent, if practicable, to one of the hospitals named below.

Passengers or others injured on company property will receive first attention by the Medical Examiner or Company Surgeon, without cost; at points where it is impossible to obtain their services, the company will be responsible for the cost of reasonable surgical attention by an outside surgeon for the first services rendered, subsequent attention will be determined by direction of proper officials.

D3201.

LOCATION	NAME AND ADDRESS	TELEPHONE
Mifflin	W. H. BANKS, M.D.....	40-X Bell
Lewistown....	S. W. SWIGART, M. D.....	2313 Bell
Mount Union.	W. J. CAMPBELL, M.D.....	{ 34 Bell
Huntingdon...	H. C. FRONTZ, M.D.....	{ P. R. R.—Jacks 10 Bell
Tyrone.....	{ FRANK PATTERSON, M.D....	618J Bell
	{ W. S. MUSSEY, M.D.....	51 Bell
	{ WM. L. LOWRIE, M.D.....	65 Bell
Osceola Mills..	G. A. RICKETTS, M.D.....	123 Bell
Philipsburg ...	JOHN K. HENDERSON, M. D...	{ Res. 286-M Bell 286-J Bell

LOCATION	NAME AND ADDRESS	TELEPHONE
Clearfield.....	J. PAUL FRANTZ, M.D.....	57 Bell
Snow Shoe....	E. H. HARRIS, M. D.....	21-R-3 Bell
Bellefonte.....	JOHN SEBRING, M. D.....	157-M Bell
Howard.....	W. J. KURTZ, M. D.....	2831 Bell
	{ J. D. FINDLEY, M.D..... 1121 Thirteenth Ave.....	{ Res. 4679 Bell Office 2-7737 Bell
Altoona.....	{ W. H. HOWELL, M.D..... 1108 Thirteenth Ave.....	2-7425 Bell
	{ S. W. HURST, M.D..... 1223 Eleventh Ave.....	P. R. R. 106
	{ A. S. KECH, M. D. 1410 Twelfth Ave.....	2-9127 Bell
Holidaysburg.	H. J. SOMMER, M.D.....	145 Bell
Bedford.....	W. F. ENFIELD, M.D.....	42 Bell

D3202.**HOSPITALS.**

LOCATION	NAME AND ADDRESS	TELEPHONE
Lewistown....	LEWISTOWN.....	855 Bell
Huntingdon...	J. C. BLAIR MEMORIAL HOSP.	90 Bell
Tyrone.....	COMMUNITY AMBULANCE....	Call City Opr.
Philipsburg ...	PHILIPSBURG STATE HOSP'L..	205 Bell
Clearfield	CLEARFIELD HOSPITAL.....	483 Bell
Bellefonte	BELLEFONTE HOSPITAL.....	180 Bell
Altoona.....	THE ALTOONA HOSPITAL.....	5156 Bell
Roaring Spring	THE NASON HOSPITAL.....	80 Bell
Cumberland...	ALLEGHENY HOSPITAL.....	1463 Bell

D3203. FIRST AID BOXES AND STRETCHERS.

First Aid Boxes, location of:

In all passenger carrying cars, including baggage cars and mail cars, and in cabin cars.

At each passenger and each freight station.

At yard offices and other suitable places in the larger yards, car inspectors' offices, power plants, substations, block and interlocking stations, tool houses, pump houses, M. W. cabins, wreck trains, shop and engine houses, camp cars, and on each track and hand car and as provided by a State law.

STRETCHERS.

One stretcher should be carried on each combined car and baggage car, to be placed in stretcher box.

One stretcher must be carried on each passenger train.

S33.**USE OF TELEPHONES.**

S33A. Employees using the telephones in connection with train movements, must satisfy themselves beyond doubt that they are in communication with proper persons.

Persons using telephones must yield the line promptly for

train movements.

If telephone fails, trainmen will use any means of communication, to avoid delay.

When used for block operations, transmitting train orders or making any arrangements pertaining to the movement of trains by trainmen, the conductor or engineman must personally receive all orders on the telephone and make all verbal arrangements pertaining to the movement of his train, but neither is relieved of any responsibility as prescribed by Rule 105.

The same precaution must be taken to insure accurate transmission and proper delivery of train orders, and instructions as is required by the rules in transmitting by telegraph. The essential features of all verbal arrangements and instructions such as train numbers, engine numbers, information in regard to trains being clear of, or desiring to occupy certain tracks, etc., must be repeated by the person receiving the information.

S34.

MISCELLANEOUS.

S34A. Locomotive cranes and such other pivoted machinery equipped with swinging booms of which a part may swing or extend outward, must not be moved in revenue trains unless Form "CT310" is attached, one to each side of the pivoted machinery when moving on its own wheels or to the car upon which it may be loaded, and Form "CT310A" to the billing. When such shipments are set off for repairs that may affect the requirements of A. A. R. Loading Rules, they must not be moved except upon authority of the Trainmaster, and not until after proper inspection, and billing has been endorsed by Agent or Yard Master "Reinspected at and loaded as per A. A. R. Loading Rules."

Conductor when setting off such shipments for repairs must notify the proper officer that it is pivoted machinery.

In order that the weight will be as nearly equalized as possible on both trucks of cranes shipped on their own wheels, having booms detached, all coal must be removed from the coal bunkers, all water left out of the boilers, and all water removed from the reservoirs. The light end of crane should trail. Where trucks are secured to body of keyed or nutted center pin, key or nut should be removed from pin on trailing end.

D3401.

AIR BRAKE.

Instruction 5-A of 99-B-1, modified as follows:

'(5-a Freight cars in Passenger Trains) Must be equipped with a safety valve applied to the brake cylinder, or the brake cylinder pipe, except in emergency cases cars may be operated without this safety valve and the Engineman in charge of the train notified to operate his train brakes under normal operating conditions in such a manner so as to avoid a brake cylinder pressure in excess of 60 lbs., at speeds less than 25 miles per hour. The safety valve when applied must be removed when car returns to freight service.

Paragraph 19 of 99-B-1 Amplified as follows:

When attaching or detaching helping locomotives in passenger or freight train service, an application and release test of the train brakes must be made from the locomotive in charge of the train. Inspectors or trainmen will note that the rear brakes of train apply and then signal for a release, noting that the rear brakes release. Helping locomotives may be detached from rear of train without making the brake test.

D3402. Special instructions for controlling freight trains with power brakes on descending grades between Osceola Mills and Tyrone on Clearfield Branch, car limit 75 cars and between Rhoads and Gum Stump on the Snow Shoe Branch, car limit 16 cars.

Instructions supplementing Air Brake and Train Air Signal Instruction Book No. 99-B-1.

The air brake equipment on all cars of freight trains dispatched for movement over Clearfield Branch grade and Snow Shoe Branch grade must be tested and repaired in accordance with instructions contained in No. 99-B-1.

Train crews must make a terminal test of the train brakes before leaving Osceola Mills and Snow Shoe, also at Summit and Rhoads when the make-up of the train is changed. When no change is made in make-up of train at Summit or Rhoads a Road Test of train brakes will be sufficient. Retaining valves must be turned up after brake-test is completed and before train is started.

The Conductor must be out on the train and will be held responsible for properly instructing the trainmen, knowing that they are located in their proper places on the train.

Northward and westward freight trains must make a running test of the air brakes to insure that the air is working throughout the train, immediately after the rear end has passed the Summit on the Clearfield Branch, and Rhoads on the Snow Shoe Branch. The Engineman hauling the train will make a sufficient brake-pipe reduction to apply the brakes throughout the train, and the Engineman on the pushing engine must observe the air gauge to see that the brake applies on the rear, after which he will give the signal "release brakes." Trainmen must be in a position on the train to pass this signal to the Engineman hauling the train. When there is no pushing engine the rear brakeman must see that the brake applies on the rear end and give proper signal.

No train will be operated with a pusher engine (except in such cases where an engine may be used in the capacity of a pusher in starting train from station or similar circumstances) without having the air connected through and brake operating on such helper or helpers and the brakes operated by Engineman of lead engine.

D3403. The following schedule running time between points on grades must be established and the speeds prescribed for various grades must not be exceeded:

TRAINS HAVING AN AVERAGE TONNAGE OF 51 TO 95 TONS PER EFFECTIVE BRAKE.

16 miles per hour on grades from 1.5% to 2 %
10 " " " " " " 2 % to 2.5%
8 " " " " " " 2.5% to 3 %
6 " " " " " " 3 % to 4 %

TRAINS HAVING AN AVERAGE TONNAGE OF LESS THAN 51 TONS PER EFFECTIVE BRAKE.

16 miles per hour on grades from 1.5% to 2 %
15 " " " " " " 2 % to 2.5%
12 " " " " " " 2.5% to 3 %
9 " " " " " " 3 % to 4 %

The speeds for various grades are defined separately between Mile Posts or Block Stations. In the event of trains stopping between these points the number of minutes delayed must be added to the minimum time.

Clearfield Branch:

FREIGHT TRAINS HAVING AN AVERAGE TONNAGE OF 51 TO 95 TONS
PER EFFECTIVE BRAKE.

	Grade	Dist. Miles	Miles Per Hr.	Mins.
Summit to End of Big Fill	1.98	2.5	10.7	14
North end of Big Fill to a point 1.2 miles south of Gardner.....	.11 to 1.98	3.5	13.125	16
Point 1.2 miles south of Gardner to Vail.....	2.2 to 2.86	3.8	9.1	25
Total.....		9.8		55

FREIGHT TRAINS HAVING AN AVERAGE TONNAGE OF LESS THAN 51
TONS PER EFFECTIVE BRAKE.

	Grade	Dist. Miles	Miles Per Hr.	Mins.
Summit to North End of Big Fill.....	1.98	2.5	16	10
North End of Big Fill to a point 1.2 miles south of Gardner.....	.11 to 1.98	3.5	16	14
Point 1.2 miles south of Gardner to Vail.....	2.2 to 2.86	3.8	12	19
Total.....		9.8		43

Snow Shoe Branch:

FREIGHT TRAINS HAVING AN AVERAGE TONNAGE OF 51 TO 95 TONS
PER EFFECTIVE BRAKE.

	Grade	Dist. Miles	Miles Per Hr.	Mins.
From Rhoads to No. 4 switch.....	2.27-2.16-2.09	2.46	12	13
From No. 4 switch to No. 3 switch.....	2.0-2.18	1.09	12	6
From No. 3 switch to No. 2 switch.....	2.0	.61	12	3
From No. 2 switch to No. 1 switch.....	2.0	.44	12	3
From No. 1 switch to Gum Stump.....	2.84-1.53	2.30	12	12
Total.....		6.9		37

FREIGHT TRAINS HAVING AN AVERAGE TONNAGE OF LESS THAN 51
TONS PER EFFECTIVE BRAKE.

	Grade	Dist. Miles	Miles Per Hr.	Mins.
From Rhoads to No. 4 switch.....	2.27-2.16-2.09	2.46	15	10
From No. 4 switch to No. 3 switch.....	2.0-2.18	1.09	15	5
From No. 3 switch to No. 2 switch.....	2.0	.61	15	3
From No. 2 switch to No. 1 switch.....	2.0	.44	15	2
From No. 1 switch to Gum Stump.....	2.84-1.53	2.30	15	10
Total.....		6.9		30

Bellwood Branch:

FREIGHT TRAINS HAVING AN AVERAGE TONNAGE OF 51 TO 95 TONS
PER EFFECTIVE BRAKE.

	Grade	Dist. Miles	Miles Per Hr.	Mins.
Mile post No. 8 to mile post No. 6.....	3.20%	2.0	8	15
Mile post No. 6 to mile post No. 4.....	3.20%	2.0	8	15
Mile post No. 4 to N. End Bellwood Yard..	3.20%	2.5	7.5	20
Total.....		6.5		50

**FREIGHT TRAINS HAVING AN AVERAGE TONNAGE OF LESS THAN 51
TONS PER EFFECTIVE BRAKE.**

	Grade	Dist. Miles	Miles Per Hr.	Mins.
Mile post No. 8 to mile post No. 6.....	3.20%	2.0	10	12
Mile post No. 6 to mile post No. 4.....	3.20%	2.0	10	12
Mile post No. 4 to N. End Bellwood Yard...	3.20%	2.5	10	15
Total.....		6.5		39

D3404. Enginemen of helping engines on the rear of train must know that the air brakes are released before attempting to start.

D3405.

Special instructions for controlling freight trains with power brakes on descending grade from Lloydville to Bellwood, car limit 25 loaded or 50 empty cars.

Instructions supplementing Air Brake and Train Air Signal Instruction Book No. 99-B-1.

A Terminal Test of the air brakes must be made on all southward trains at Lloydville.

The brake rigging must be examined and properly adjusted so that piston travel will conform to Instruction No. 39, Page 39, of the Air Brake and Train Air Signal Instructions Book No. 99-B-1. The slack must not be taken up with the hand brakes after the air brake is tested, as by so doing there is danger of shortening the piston travel so it will not pass the leakage groove in the air brake cylinder and make the air brake inoperative.

Brake pipe pressure of 95 to 100 pounds must be used on all loaded freight trains.

After the terminal test has been completed and before starting, it must be known that the brake pipe pressure is being restored as indicated by the brake pipe gauge pointer on the pusher locomotive or by the caboose gauge if pusher is not used and that the rear brakes are released. In the absence of a pusher or a caboose gauge the brake must be applied and released to insure that no angle cocks have been closed.

The Conductor must be in his proper place out on the train, and will be held responsible for properly instructing the Trainmen, and to know that they are located in their appropriate stations on the train, and that the handles of the pressure retaining valves on each car in the train will be turned to the position for service as may be required.

Conductors and brakeman, must be stationed on the train, not on the engine nor the caboose, spaced as nearly as possible equidistant between the engine and rear end.

On loaded cars equipped with the 25 and 50 pound retaining valves, such valves must be placed in the 50 pound position from Lloydville southward to foot of grade.

The pressure retaining valves must be turned to proper position for service on all cars of loaded trains.

The maximum brake pipe pressure for loaded trains must not be less than 95 to 100 pounds. On locomotives equipped with M-3-A brake pipe feed valve the Engineman will turn the adjusting nut on brake pipe feed valve to the right until the guard strikes the stop, close the valve in the low pressure governor pipe located near the automatic brake valve. By

making these adjustments the brake pipe pressure will be 95 pounds and the main reservoir pressure 130 pounds. Locomotives not equipped with M-3-A brake pipe feed valve will obtain 100 pounds brake pipe pressure by running the brake valve in release position. This adjustment must be made so as to obtain at least 95 pounds brake pipe pressure before leaving top of grade. The Engineman must operate the air brake in such a manner as to maintain a brake pipe pressure of not less than 70 pounds at all times. On trains of empty cars the required brake pipe pressure will be 70 pounds.

Thirty (30) per cent of the pressure retaining valves must be turned to proper position for service on the front end of all empty trains. Mixed trains of fifty (50) per cent. or more of loaded cars will be classed as loaded trains. If loaded cars are on the rear end of train all pressure retaining valves will be turned to proper position for service, if loaded cars are on the front end of train, the pressure retaining valves will be turned to proper position for service on all loaded cars, and on as many of the empty cars as conditions require.

On all other descending grades the minimum number of pressure retaining valves to be turned to proper position for service will be as follows: For loaded trains of ten (10) or more cars, thirty (30) per cent; for empty trains of ten (10) or more cars, ten (10) per cent. The number of retaining valves to be increased when conditions require it.

Freight trains with pusher engines, when making a road test of the entire train, the engineman operating the brakes, upon receiving proper signal, will give one blast of the engine whistle and apply the brakes for test. The rear pusher engineman, upon seeing that the brakes apply, will whistle for the release of the brakes. The hauler engineman, upon receiving this signal will release the brakes. The rear pusher engineman, upon seeing that brakes release, will again give two blasts of the engine whistle, after which the train is ready to proceed.

D3407. STARTING TRAINS

When starting a freight train, having a Helper on the rear the front engineman will signal for the return of the Flagman. When the Flagman returns, Engineman of rear helper will signal to "release brakes" (Rule 14-b) and after proceed signal has been passed from rear end of train to front end the lead Engineman will signal "release brakes" after which the train will be started.

When it is necessary to take the slack to start trains having pusher engines, slack will be taken by pusher engines, the hauler engine will stretch the slack, after whistling off brakes, and if unable to start the train he will allow the throttle to remain open whistle off brakes again, pusher engines will then take the slack.

In taking the slack from the rear end, the rear pusher engineman will open the cylinder cocks, but will not reverse the engine, the pusher engineman next to train will reverse engine and take the slack, the rear pusher engineman will not allow the slack to run back hard enough to damage train.

Trainman must be in position to give signals and to assist in holding the train when necessary to get the slack.

D3408. Rule 701 modified. Engines of freight trains of more than 25 cars must be detached before taking coal or water unless in the judgment of the engineman it is unnecessary.

D3409. Trainmen must not pass over container cars while cars are in motion.

D3410. Rule 706 modified. Uniforms—Designated uniformed employes must wear the standard uniform November 1st to April 30th, both inclusive.

The uniform designated for Summer use only, or standard 10 oz. blue serge coats may be worn May 1st to October 31st, both inclusive.

Coats must be buttoned, except when trainmen are actually engaged in lifting transportation.

D3411. In connection with shifting passenger equipment at Altoona passenger station, a test of the back-up hose must be made each time it is applied to a car to insure that it is in proper working order before the shift is begun. This test must be made when attaching the hose, by leaving the brake valve on the back-up hose open when signalling the engineman to release the brakes, the valve to be closed as soon as the exhaust of air therefrom indicates that it is working properly.

D3412. Rule 735 amplified. Dead-head special cars and dining cars, must be handled with the engine with air brakes in service.

D3413 Rule 737 amplified:

Electric illuminated signs may be displayed on rear of passenger trains.

Also, search or flood lights located under the vestibule of business cars may be displayed on the rear end of trains.

D3414. Rule 739. Relative to snow burning oil applies also to Gas-Electric motor cars.

D3415. Rule 808 modified. The post of rear brakeman on southward freight trains between Summit and Vail, while train is in motion, will be on the rear portion of train ahead of the assisting engine or cabin. When train is stopped he will be governed by Rule 99.

D3416. Rule 832 amplified:

To the signal equipment for each crossing watchman or gate-man, add:

Fusees,

Whistle.

Fourth paragraph to read:

"When a train, engine or any type of rail equipment is approaching, watchmen must place themselves in the middle of the highway, near the track, and remain there until it is safe for vehicles and pedestrians to cross the track. By day they will display a Stop sign, holding it in upright position so that the word "STOP" will plainly appear to any person approaching on the highway. By night, or when Stop sign cannot be plainly seen, they will display a red light, swinging it across the direction of highway traffic, care being used not to show the red light to an approaching train, engine or any type of rail equipment except when necessary to stop it."

D3417. Where crossing watchmen are provided to furnish protection in addition to automatically operated highway crossing signals, the signals must at all times be cut in to work automatically, except, where an automatic feature is installed to

restore them to automatic operation, they may be cut out to avoid their operating unnecessarily.

D3418. Freight trains leaving coaling or watering stations will move at a speed so as to permit the train crew to make inspection of train as it passes. The speed should be reduced sufficiently to insure safety to the members of the crew, making the inspection, getting on the rear end of the train.

D3419. Not more than three (3) persons including the Engineman and Fireman, will be permitted to ride on engines of passenger trains, and not more than four (4) persons, including the Engineman, Fireman and Trainmen, will be permitted to ride on engines of freight trains; unless otherwise authorized by the Superintendent.

D3420. Eastward trains performing work at the Icing Station, Huntingdon, or at any of the sidings between Deer and Huntingdon must inform the Signalman at Huntingdon when the work is completed and train ready to leave.

D3422. Westward freight trains stopping at Tipton for water, must make use of the East plug unless train is of such a length as to clear the public crossing at Tipton Station while taking water at the West plug.

D3423. Enginemen of eastward freight trains from Altoona will instruct the brakemen as to number of retainers they wish used and the manner in which they wish them operated between Altoona and Huntingdon. Also enginemen of southward freight trains or circus trains on Bedford Branch will instruct the brakemen as to number of retainers they wish used and the manner in which they wish them operated between Buffalo Mills and Hyndman. Brakemen will follow the instructions they receive from the enginemen in regard to these retainers.

D3424. Retaining valves will be used on eastward tonnage trains between Dix and Snow Shoe Intersection in accordance with Rule 16, Page 22, Brake and Train Air Signal Instruction Book No. 99-B-1.

D3425. Persons working in Train Shed, Altoona must, when obstructing tracks, keep some one on watch to clear the track, or promptly warn any approaching engine or train.

D3426. Passenger trainmen and employes of the Pullman Company must keep the doors of toilet rooms in passenger equipment locked passing through Altoona.

D3427. The following instructions will govern the handling of Gasoline and Gas Electric Motor Cars by switching crews.

A. MECHANICAL DRIVE CARS: It must be definitely determined before coupling to the car that transmission gears are in neutral. This applies to both the reverse gear and the transmission gear.

B. BEFORE CAR IS MOVED, it must be definitely determined that the brakes have released properly.

C. GAS ELECTRIC CARS: Extreme care must be exercised in coupling and while braking, and it must be definitely determined that the brakes are released before the car is moved.

D. EITHER GASOLINE OR GAS-ELECTRIC CARS, whenever possible, should be moved under their own power.

D3428. Passengers must never be allowed to get on or off moving trains. This applies to employe-passengers, as well as others.

D3430. When necessary to drench live hog shipments, the hogs moving in Train FW8 will be drenched at Altoona. Hogs moving in other trains will be drenched at Denholm. The watering of any other stock shipments or the watering of poultry should be performed on the icing tracks at Huntingdon.

D3432. Huntingdon Icing Station: Method of operation governed by the following instructions:
Arranged Freight Train Service.

All through cars in arranged service trains, requiring icing, will be iced at Huntingdon.

EASTWARD TRAINS.—The Conductors, when receiving lay-out of train at "GD", Altoona Yard, will also be given three (3) copies of AD 27 showing the icing attention required. Upon arrival at Huntingdon conductors must be at front end of train and have with them these forms and waybills. The forms and waybills for cars that are to be re-iced must be delivered promptly to the Foreman of the Icing Station located at the East end of platform.

WESTWARD TRAINS.—Conductors of trains having cars to ice at Huntingdon will throw off at Wall a memorandum showing the number of such cars. The operator at Wall to be on look-out for such reports and immediately telephone them to Icing Station at Huntingdon, also to the Train Dispatcher at "FA". The Conductor must be on front end arriving at Huntingdon, get off at Office at East end of platform and deliver waybills to Foreman or Clerk promptly in order that they may be examined for cars requiring icing attention.

Railway Express Trains.

A representative of the Railway Express Agency will report to Station Master at Harrisburg prior to the departure of a westward train, containing cars to be re-iced at Huntingdon, the numbers of such cars, similar information to be furnished for eastward trains by a representative of the Express Agency at Pittsburgh to the Station Master at Altoona, either direct by telephone or by means of a memorandum slip to be handed to Pittsburgh Division Conductor for delivery to Station Master, Altoona. This information will be telephoned to the Train Dispatcher at Altoona immediately by the following method:

WESTWARD TRAINS.—Station Master at Harrisburg to give the information direct to the Train Dispatcher at Altoona.

EASTWARD TRAINS.—Station Master at Altoona to telephone the car numbers to Train Dispatcher's Clerk, telephone 62.

This information to be given also to the Conductor before departure.

The Train Dispatcher will promptly telephone to the Yard Office at Huntingdon the necessary information as to the car

numbers, and position in train, which information will be promptly passed on to the Icing Plant.

D3433. Hot Boxes on Passenger Trains: Facilities for repairing hot boxes on passenger trains are provided as follows:

Cooling hose, sponging material, etc., Bailey, Thompsonstown ($\frac{1}{4}$ mile west, north side), Denholm, Ryde Water Station, Huntingdon, (opposite engine house), Warrior Ridge Water Station No. 1.

Conductors will notify the Superintendent as much in advance as possible when a car inspector is needed at any point where inspectors are located.

Rod cup grease for emergency use may be obtained at the following points:

MAIN LINE

"AC" Yard Office.

Huntingdon Oil House.

Ryde Water Station.

Lewistown Enginehouse

Denholm Coal Wharf.

Bailey Pumping Station.

BALD EAGLE BRANCH

Port Matilda Block Station

Snow Shoe Int.

CLEARFIELD BRANCH

Osceola Enginehouse.

Clearfield.

D3434. A passenger train, in either direction, requiring change of engines at Lewistown, if diverted to No. 5 track will stop at middle switches where engine will be cut off, taken to enginehouse and change made as quickly as possible. If not diverted to No. 5 track stop should be made at Lewis.

D3436. Emergency Water Stations located as follows:

Ryde and Cove.

D3437. When a westward passenger train is double-headed and both engines are going through to Pittsburgh water will be taken at Bellwood trough, only by the engine coupled next to train. The lead engine, unless it has sufficient water to go through, will be cut off at Altoona and a protect engine substituted.

D3438. When a passenger train, which goes beyond a terminal, to a connecting division, has had trouble with hot boxes on

any of the cars, the Conductor delivering the train, will give this information to the Conductor receiving the train, by use of a memorandum.

D3439. Signalmen will keep Dispatchers notified of extreme weather conditions in the vicinity of their block stations, such as continuous fogs, severe snow storms, etc.

D3440. On sidings equipped with concrete bumping blocks a reasonable amount of space must be maintained between the bumping block and the car next to it, to relieve the strain on draft gear that results from coupling to a car standing solidly against bumping block.

D3441. Employees receiving train orders direct must at end of trip or day forward them to Passenger Train Master, Altoona.

D3442. Rule 702, ninth paragraph revised.

"Defective hose removed enroute must be tagged to show train number, initial and number of car or engine, date and place of removal. Enginemen to send hose from engine to enginehouse foremen. Conductors to send hose from passenger equipment cars to foremen car inspectors at terminal; from freight cars to be delivered to first available car inspector who will furnish a new one. Freight conductors must carry as part of their equipment a supply of form M. P. 401—Conductors Report of Repairs Made and Material Applied to Foreign and Individual Freight Cars by Train and Engine Crews—and use these forms as directed thereon."

D3443. Block Signal Rules Additional to Those Contained in The Book of Rules and Not Effective Except Where So Specified by Special Instructions.

AMPLIFICATION OF CONTROLLED MANUAL BLOCK RULES.

416.

NOTE: WHEN THE TELEPHONE IS USED, THE CODE WILL BE USED WITHOUT THE NUMERALS.

- 1—Display Stop-signal.
- 13—I understand.
- 17—Display Stop-signal. Train following.
- 2—Block clear.
- 12—Block is clear of opposing trains.
- 4—Train other than passenger has entered block.
- 46—Passenger train has entered block.
- 5—Block is not clear of train other than passenger.
- 14—Block is not clear of opposing trains.
- 56—Block is not clear of passenger train.
- 7—Train following.
- 52—Train has passed switch. Answer by repeating.
- 55—Hold train. Answer by 13.

When two or more tracks are used in the same direction, signalmen in using the communicating code must also specify the track.

(Note on Page 108, Book of Rules):

NOTE: Where a BLANK IS SHOWN AFTER A CODE SIGNAL IN RULES 417, 417-A, 417-B, and 418, THE DESIGNATION OF THE TRAIN, AND THE DIRECTION OF EXTRA TRAINS, MUST BE INCLUDED IN GIVING THE SIGNAL.

417. (SINGLE TRACK—FOR ABSOLUTE BLOCK FOR OPPOSING MOVEMENTS AND AUTOMATIC BLOCK FOR FOLLOWING MOVEMENTS.)

To admit a train to a block the signalman must examine the block record and if the block is clear of opposing trains, give "1 for" to the next block station in advance. The signalman receiving this signal, if the block is clear of opposing trains, must display the stop signal to opposing trains, reply "12 for" and unlock. If the block is not clear, he must reply "14 of". The signalman at the entrance of block must then display the proper signal indication.

A train must not be admitted to a block which is occupied by an opposing train except by train order.

If means of communication fail, a train may be admitted to a block as provided for in Rule 432.

417-c. When, as prescribed by Rule 417, 417-a, 417-b, or 418, a signalman gives or receives "2", "12" or "13", this information, with the train number and time given or received, must be entered on the block record at both offices.

418. (DOUBLE, THREE OR MORE TRACKS—FOR ABSOLUTE BLOCK FOR OPPOSING MOVEMENTS AND AUTOMATIC BLOCK FOR FOLLOWING MOVEMENTS ON THE SAME TRACK ON WHICH THERE IS AN ASSIGNED CURRENT OF TRAFFIC.)

To admit each train to a block against the current of traffic the signalman must examine the block record, and if the block is clear of opposing trains, give "1 for" to the next block station in advance. The signalman receiving this signal, if the block is clear of opposing trains, must display the Stop signal to opposing trains, reply "12 for....." and unlock if necessary. If the block is not clear of opposing trains, he must reply, "14 of". The signalman at the entrance of the block must then display the proper signal indication.

To admit trains to a block with the current of traffic after a train moving against the current of traffic has cleared it, the signalman at the end of the block where it cleared must examine the block record and if the block is clear of opposing trains, give "1 for" to the next block station in advance. The signalman receiving this signal, if the block is clear of opposing trains, must display the Stop signal to opposing trains, reply "12 for" and unlock. If the block is not clear of opposing trains, he must reply "14 of". The signalman at the entrance of the block will then display the proper signal indication to trains with the current of traffic. A train must not be admitted to a block which is occupied by an opposing train except as directed by train order. Rule 432 does not apply to movements covered by Rule 418.

If means of communication fail while there is a train moving against the current of traffic in a block, the signalman in the rear of such train must, after his indicator shows that it has cleared the block, give unlock to the signalman at the block station in advance, so that movements may be established with the current of traffic; the latter will, after any train against the current of traffic for which "12" or "13" has been given by him, has cleared the block, if his indicator shows that the block is clear, and should no cause for detaining trains with the current of traffic be known, permit them to proceed, but unless otherwise directed by the Superintendent he must instruct the first train in writing, as follows:

"Means of communication have failed; proceed to the next block station expecting to find track obstructed."

If the block signal at the block station that governs trains with the current of traffic in entering the block cannot be changed from its most restrictive indication, and the signalman is unable to communicate with the Superintendent, he will deliver Clearance Card, Form C. to trains governed by that signal.

ENGINEMEN AND TRAINMEN.

465. When a train clears a block between block stations, the conductor or engineman must report clear to the signalman, but they are not required to do so when entering a siding at a block station clearing a block at a switch operated by the signalman. A train must not enter a block nor cross from one track to another at a Block Station, or between Block Stations, without proper block signals or permission from the signalman, either of which supersedes time table superiority.

In the absence of a block signal, the conductor or engineman must ascertain from the signalman the condition of the block and obtain permission from him to enter it. If information concerning the block is received by the conductor, he must personally give it to the engineman.

S35. INSPECTION OF PASSING TRAINS.

D3501. Rule 703 amplified. The following instructions must be observed as far as practicable and other duties will permit. Employes will observe passing trains for defects, and should there be any indication of conditions endangering the train take such measures for its protection as may be practicable.

Trainmen of freight and passenger trains will observe passing trains and if any defects are noted, such as brakes sticking, brake rigging down, swinging doors, hot boxes, objects protruding that may result in damage or injury, will signal members of such trains, calling attention to dangerous conditions, and if nothing irregular is noted, will give proceed signal to rear of passing train when it is practicable to do so.

Train and engine crews on moving trains will be on the lookout for signals, when passing other trains, interlocking, block, water, coaling and other stations, sidings, highway crossings where crossing watchmen are on duty and points where trackmen are working, and when practicable exchange signals.

The following signals will be used where other signals are not required:

Hot Journal

- By day** —Nose held with one hand, with other hand pointed toward track.
- By night**—Lamp swung vertically in a small circle, lamp to be held by guard wire around globe.

Brakes Sticking

- By day** —Hands shoved in sliding motion out from body.
- By night**—Lamp raised and held stationary.

**Broken Wheels
Defective Truck
Dragging Brake connection
Lading Shifted Over Side
or End of Car,
Swinging Car Door or
Any Other Dangerous
Conditions.**

Stop Signal

Home Division _____ Name _____ Occupation _____

QUALIFIED FOR SERVICE

DIVISION	ZONE	PART OF ZONE QUALIFIED FOR.

[illegible]

GENERAL ORDERS.**MIDDLE DIVISION**

GENERAL ORDER No. 2501 ZONE A
GENERAL ORDER No. 2501 ZONE B
GENERAL ORDER No. 2501 ZONE C
GENERAL ORDER No. 2501 ZONE D
GENERAL ORDER No. 2501 ZONE E
GENERAL ORDER No. 2501 ZONE F
GENERAL ORDER No. 2501 ZONE G

Altoona, Penna., April 15, 1937,

Effective 6.01 A. M., Sunday, April 25, 1937.

Time Table No. 25 takes effect 6.01 A. M., Sunday, April 25, 1937, and contains the necessary instructions issued in the General Orders up to and including:

GENERAL ORDER No. 2407 ZONE A
GENERAL ORDER No. 2407 ZONE B
GENERAL ORDER No. 2406 ZONE C
GENERAL ORDER No. 2407 ZONE D
GENERAL ORDER No. 2406 ZONE E
GENERAL ORDER No. 2406 ZONE F
GENERAL ORDER No. 2406 ZONE G

All of which must be removed from bulletin boards.

Each employe must carefully examine Time Table No. 25 to see that his copy is complete, with all schedule pages properly lined up, and note the changes.

Employes must turn in old Time Tables to Bulletin Board Attendant after Time Table No. 25 takes effect.

(a) MAIN LINE:

No. 623 will make an "A" stop daily except Saturday, Sunday and school holidays at Shawnee.

No. 24 will make "B" stops daily except Saturday, Sunday and school holidays at Newton Hamilton and Ryde.

In each case when on account of school holiday, stop is not desired, crew will be so instructed.

(b) South track on old line Newport. stored with cars from Furnace Crossing to east end.

(c) HOLLIDAYSBURG & PETERSBURG BRANCH:

Hollidaysburg to Wye No. 2 track stored with cars.

(d) BALD EAGLE BRANCH:

When Hall Interlocking and Block Station is closed, the switch leading to east end of passing siding will be out of service, and the eastward and westward distant signals will remain in service as distant switch signals.

E. C. GEGENHEIMER,
 Superintendent.

**THE PENNSYLVANIA RAILROAD
EASTERN REGION—MIDDLE DIVISION**

Altoona, Pa., June 15, 1937.

**GENERAL ORDER NO. 2502—ZONE A
GENERAL ORDER NO. 2502—ZONE B
GENERAL ORDER NO. 2502—ZONE C
GENERAL ORDER NO. 2502—ZONE D
GENERAL ORDER NO. 2502—ZONE E
GENERAL ORDER NO. 2502—ZONE F
GENERAL ORDER NO. 2502—ZONE G**

Effective at once.

TIME TABLE AUTHORITY:

Schedules of trains 775, 776, 777 and 778 changed as indicated on coupons attached to this General Order.

Effective 6:01 A. M. Sunday, June 20, 1937.

Train 666 changed to operate Daily except Sunday.

Sunday only train 664—added.

Train 623 will make "S" stop at Millerstown 5:14 A. M.

Schedules of trains 21, 22, 501, 662, 663, 666, 750, 751, 770, 771, 781, 782 and 788 changed as indicated on coupons attached to this General Order.

Coupons must be detached and pasted over corresponding schedules in Time Table No. 25. The coupon for train 664 to be pasted over schedule of train 666 on page 24. The coupon for train 666 to be pasted in blank column following train 682, page 25.

BALD EAGLE BRANCH:

Yard limit Board at East end of Tyrone Yard moved Westward to former Vail Station.

CLEARFIELD BRANCH:

Summit Unattended Block Station moved Southward 275 feet.

SNOW SHOE BRANCH:

Switch backs in service for 21 car trains. Special Instruction D-3402 modified accordingly.

E. C. GEGENHEIMER,
Superintendent.



**THE PENNSYLVANIA RAILROAD
EASTERN REGION—MIDDLE DIVISION**

Altoona, Pa., July 2, 1937.

GENERAL ORDER NO. 2503—ZONE A
GENERAL ORDER NO. 2503—ZONE B
GENERAL ORDER NO. 2503—ZONE C
GENERAL ORDER NO. 2503—ZONE D
GENERAL ORDER NO. 2503—ZONE E
GENERAL ORDER NO. 2503—ZONE F
GENERAL ORDER NO. 2503—ZONE G

Effective at once:

BELLWOOD:

Switch leading to east leg of Wye locked in open position.

Switch leading from east leg of Wye to Old Tipple track locked in open position.

Effective 6:00 A. M., Sunday, July 11, 1937.

TIME TABLE AUTHORITY:

Schedules of trains 5, 8, 35, 37, 510, 511, 662, 663, 786 and 787 changed as indicated on coupons attached to sticker form of this General Order.

Train No. 79 withdrawn.

Train No. 510 withdrawn between "BO" Block Station and Altoona.

Sunday only trains 792 and 793 withdrawn between Altoona and Grampian.

Trains 790 and 791 changed to operate Daily except Sundays and Holidays, including Labor Day, September 6, 1937.

Trains 750, 751, 772 and 773 will not operate Labor Day September 6, 1937 in addition to Holidays listed.

Coupons must be detached and pasted over corresponding schedules in Time Table No. 25.

The frequency of trains 790, 791, 750, 751, 772 and 773 must be changed with ink by Employees.

MAIN LINE:

Maximum speed of passenger trains with freight engine—50 miles.

Time Table Special Instruction D-2001 modified accordingly.
WEST OF VIEW INTERLOCKING:

Device for detecting dragging equipment on moving trains installed on Nos. 1 and 2 tracks approximately 2 miles west of View Interlocking, in service. Wayside signals and cab signals affected from signal 1214. Time Table Special Instruction D-1642 modified accordingly.

Effective 12.01 P. M., Monday, July 12, 1937.

CLEARFIELD BRANCH:

Yard limit board North of Vail moved Southward 2800 feet to Standard Oil Company Siding.

Yard limit board at South Clearfield moved Northward 2425 feet to Robinson's Clay Products Siding.

MOSHANNON BRANCH:

RAM unattended block station moved Northward 350 feet.
Madera Junction passing siding lengthened 420 feet at North end.

BALD EAGLE BRANCH:

Vail Passing Siding changed to PARK Passing Siding.
Page 9 of Time Table No. 25 modified accordingly.

E. C. GEGENHEIMER,
Superintendent.

**THE PENNSYLVANIA RAILROAD
EASTERN REGION—MIDDLE DIVISION**

Altoona, Pa., July 30, 1937.

GENERAL ORDER NO. 2504 ZONE A

Effective 12:01 P. M., Wednesday, August 4, 1937.

WEST OF DEER INTERLOCKING

Device for detecting dragging equipment on moving trains installed on Nos. 1 and 2 tracks approximately 2 miles west of Deer Interlocking, in service. Wayside signals and cab signals affected from signal 2074 to East end Deer Interlocking Plant. Time Table Special Instruction D-1642 modified accordingly.

WEST OF LEWIS INTERLOCKING

Device for detecting dragging equipment on moving trains installed on Nos. 1 and 2 tracks approximately 2 miles west of Lewis Interlocking, in service. Wayside signals and cab signals affected from signal 1686 to East end Lewis Interlocking. Time Table Special Instructions D-1642 modified accordingly.

E. C. GEGENHEIMER,
Superintendent.

**THE PENNSYLVANIA RAILROAD
EASTERN REGION—MIDDLE DIVISION**

Altoona, Pa., September 2, 1937.

**GENERAL ORDER NO. 2505 ZONE A
GENERAL ORDER NO. 2504 ZONE D
GENERAL ORDER NO. 2504 ZONE G**

Effective at once:

SNOW SHOE BRANCH

Switch backs 2, 3, and 4, in service for 30 car trains.

Last paragraph of General Order 2502, All Zones—Modified.

Special Instruction D-3402 modified accordingly.

CLEARFIELD BRANCH

New York Central Grade Crossing North of Philipsburg—

Northward and Southward home signals displaying aspects as indicated on line B, columns 1 and 3 of Time Table. Special Instruction D-2102, changed to Standard Signal Aspects, Rule 275, figure 5 and Rule 286, figure 4.

Line B of Special Instruction D-2102, Time Table No. 25—eliminated.

CURWENSVILLE—SOUTH OF.

Main track relocated and in service for speed of 15 miles per hour, from a point 4605 feet North of M.P. 45 to a point 2800 feet North of M.P. 46.

Effective 10.00 A.M. Thursday, September 9, 1937.

Schedule speed in effect on relocated track.

MAIN LINE

LONGFELLOW

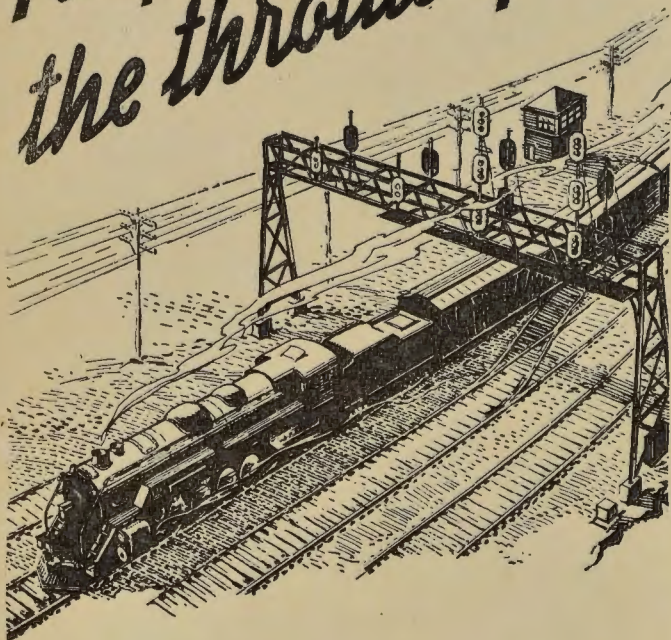
Block signal No. 1738, located on signal bridge 1613 feet West of Longfellow Passenger Station, governing Eastward movements on Nos. 1 and 2 tracks and Block Signal No. 1733, located on signal bridge 94 feet West of Longfellow Passenger Station, governing westward movements on Nos. 3 and 4 tracks—out of service. Block extended accordingly.

PETERSBURG

Block Signal No. 2087, located on signal bridge 243 feet West of Petersburg Passenger Station, governing eastward movements on Nos. 1 and 2 tracks—moved to signal bridge 1724 feet west of Petersburg Passenger Station. Signal number changed to 2092. Block changed accordingly.

E. C. Gegenheimer,
Superintendent.

Keep the throttle open!

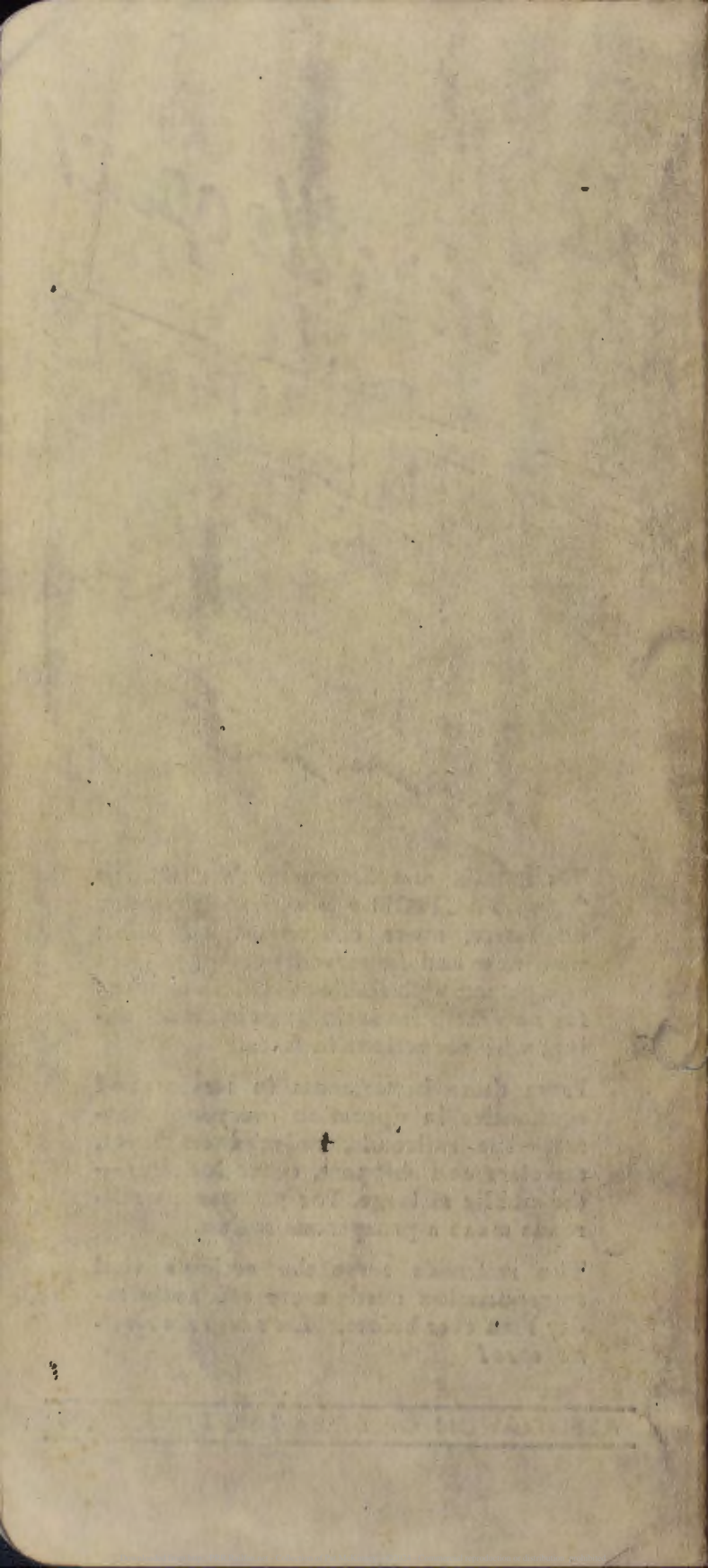


Railroads met Depression's challenge with ACTION » » with freight trains on faster, more convenient schedules; with new and improved passenger train equipment; with millions of dollars spent for new facilities including air-conditioning; with reductions in fares.

From these betterments in service and economies in operation everyone benefits—the railroads, railroad employes, travelers and shippers, other industry—the public at large. For prosperous railroads mean a prosperous nation.

The railroads serve the nation's vital transportation needs more efficiently today than ever before. *Let's keep the throttle open!*

ASSOCIATION OF AMERICAN RAILROADS



LV 10.21 am

6-24-37

E. Shop J - on T -

①

Wed C -

EB

Tin #2

Br Apph & Tunnel

Sus Cuts -

Ball Sw

T-E Tipton Hwy

Sw Sugar

Thru 36 382V

Spun 52

Swing Barn Wash

11 ^{went down C. W. Ridge} ~~at~~

2 at Den 11⁰³

Ho 1107 1/2 = 11.10 - too ①

T-ug 194.3

Line Water Pans

Jacks 11.22

Spoken C & g 704 Union

Swiss 11.45

Line T. East

Swiss turn 11.47 — 11.48

June 24 - 1937 WSS (2)

Jfs on T-C W Houston 6/24-37
" " T E " " 3/24

Wael 11-58 am

Coal - ~~11-59~~ ^{am} - 12-noon - 12-03 pm

Wiffin 1208

Mexico C on C + E of 12-13

Long T. E Vanderke. X lead- spec

Jacky West 140.76

Stone wall 138.9 S of Br.

July 2. Miller on T-
+ C - east Jfs-Rail?

C - E 134.7 -

Port - 12.26 - 7 minutes

{ C - + Tan W 132.5 + Rail?

Wm Newf + Sta

Rides dead E & W of Newf + Sta.

Tans + C on to E and old line

(Bumpy E of B.O. 5 - Warst)

(C on W of 128.7)

L + ^W Head surf T 100 quois (Bed
Hank)

Train # 2

June 24/27 (3)

Rv 123.3 at 12.35 PM

Aguedut — whole tan
from Aguedut to WJ

1 - 1/2 mi. need. raise

Nich — 12.38 1/2

(Tanks need raise E & W
of Link Hts —
Line E & out on west)

On E-Tan & Q- bumpy.

Peedex Woz & E of " "

both places need surface
raise. from where gang
is working on Cen E & Peedex west —
Banks 12-45 — 11 min late