

THE PENNSYLVANIA RAILROAD SYSTEM



INFORMATION



FOR EMPLOYES AND THE PUBLIC

Broad Street Station
PHILADELPHIA, PA.

March 14, 1914

Pennsylvania Station
PITTSBURGH, PA.

II

13

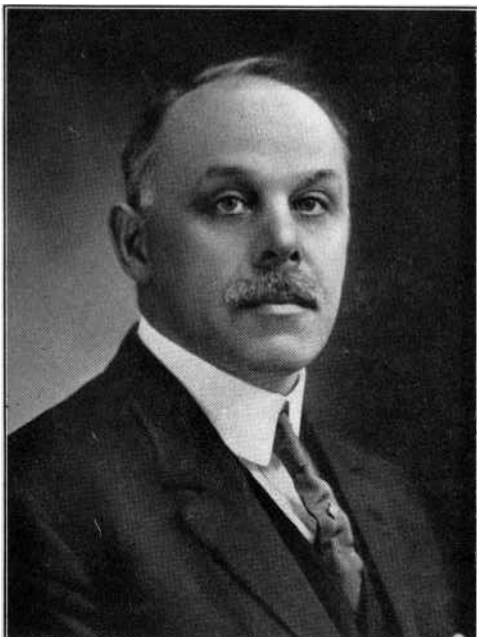
Promotions and Appointments

Lines West of Pittsburgh Traffic Department

JOHN J. KOCH

Assistant Freight Traffic Manager, Pittsburgh

John J. Koch was born in Pittsburgh, Pa., February 10, 1861. He entered the service of the Pennsylvania Company, in the office of the General



JOHN J. KOCH

Freight Agent, in 1879, and in 1881 he was made Clerk in the Division Freight Agent's office. In 1884 he was appointed Chief Clerk in that office, and in 1897 he was promoted to Division Freight Agent.

Mr. Koch was appointed General Freight Agent, Pennsylvania Company, on July 1, 1908, and on February 16, 1914, he was promoted to Assistant Freight Traffic Manager, Pennsylvania Lines West of Pittsburgh.

J. C. VENNING

General Ore and Coal Agent, Pittsburgh

J. C. Venning was born in Bellaire, Ohio, November 12, 1865. He entered the Company's service as Messenger in the office of the Local Freight Agent, Cleveland and Pittsburgh Division, in Pittsburgh.

Mr. Venning was transferred to the office of the Assistant General Freight Agent as Stenographer in 1883. In 1885 he was made Stenographer to the General Freight Agent of the Pennsylvania Company. He was promoted to Chief Clerk to the Coal Freight Agent of the Pennsylvania Lines West of Pittsburgh in 1901, and in 1903 he was made Chief Clerk to the General Ore and Coal Agent. In 1908 he was appointed Chief Clerk to the Assistant Freight Traffic Manager, and on January 1, 1912, he was advanced to Ore and Coal Agent. He was promoted to be General Ore and Coal Agent February 16, 1914.

G. S. McCABE

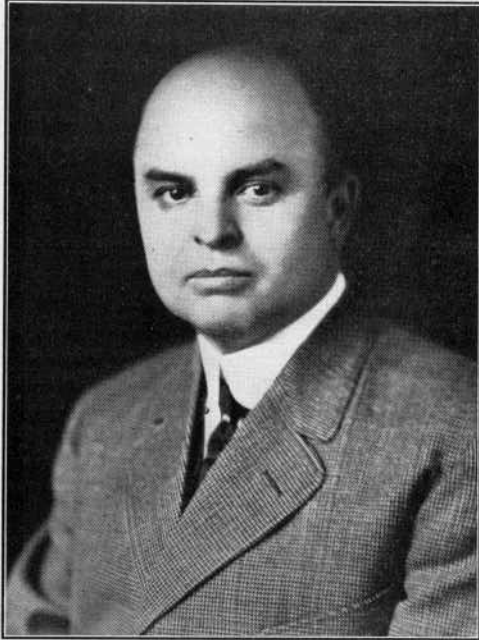
General Freight Agent, Pennsylvania Company, Pittsburgh

Guy S. McCabe was born at Sewickley, Pa., July 23, 1873. He entered the service of the Company as Messenger in the General Freight Office of the Pittsburgh, Cincinnati, Chicago and St. Louis Railway Company at Columbus, Ohio, in 1889.

Mr. McCabe was made Clerk in the office of

cincinnati, Chicago and St. Louis Railway Company at Pittsburgh.

Mr. Weller was made Contracting Agent of the Vandalia Railroad on November 1, 1891, and on January 1, 1897, he was appointed Commercial Agent. He was made District Freight Solicitor of the Pennsylvania Lines and Vandalia Railroad in March, 1906, and on July 1, 1908, he was promoted to Division Freight Agent of the Pan Handle,



G. S. McCABE



JAMES E. WELLER

the Division Freight Agent at Richmond, Ind., in 1894. In October, 1896, he was appointed Traveling Freight Agent, with headquarters at Richmond, and in November of that year he was promoted to be Division Freight Agent at Richmond. He was appointed General Western and Division Freight Agent at Chicago in 1908. In 1910 he was made General Western and Division Freight Agent of the Pennsylvania Company at Chicago.

Mr. McCabe was promoted to General Freight Agent of the Pennsylvania Company, with headquarters at Pittsburgh, on February 16, 1914.

JAMES E. WELLER

General Western Freight Agent, Pennsylvania Company, Chicago

James E. Weller was born at North Liberty, Pa., September 30, 1868. He was employed by the Railroad in 1890 as Rate Clerk in the office of Division Freight Agent of the Pittsburgh, Cin-

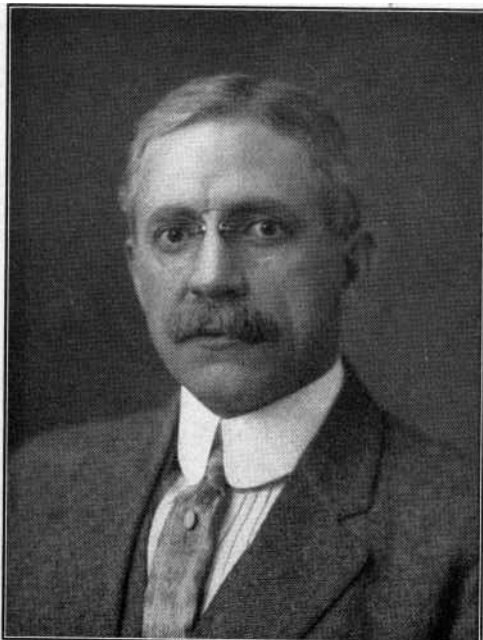
with headquarters at Pittsburgh. On June 1, 1910, he became General Western and Division Freight Agent of the Pan Handle Railroad, with headquarters at Chicago. On February 16, 1914, he was made General Western Freight Agent in Chicago.

S. C. MATTHEWS

Assistant General Freight Agent, Pennsylvania Company, Pittsburgh

S. C. Matthews was born at Cincinnati, Ohio, September 7, 1868. He began work for the Pittsburgh, Cincinnati, Chicago and St. Louis Railway Company in 1882 as Clerk at Carrel Street, Cincinnati (then designated as Columbia, Ohio).

Mr. Matthews was made Voucher Clerk in the Division Freight Agent's office in Cincinnati in 1885. He became Chief Clerk in the same office in 1887, and Division Freight Agent on February 1, 1905. He was promoted to Assistant General Freight Agent of the Pennsylvania Company February 16, 1914.

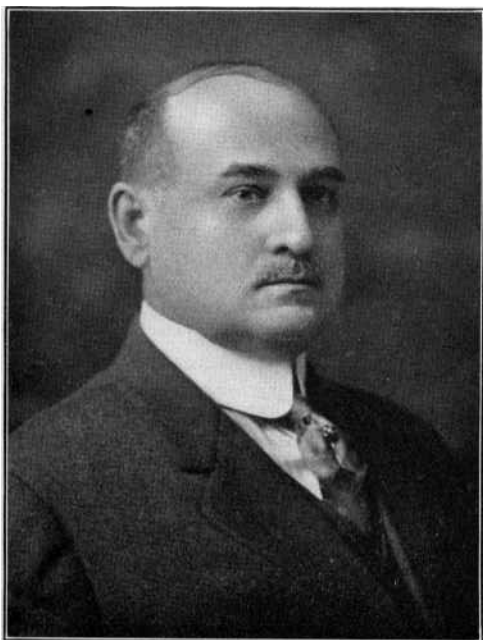


S. C. MATTHEWS

C. L. FERRALL

Division Freight Agent, Cambridge, Ohio

C. L. Ferrall was born at Kirkersville, Ohio, September 4, 1863. He entered the service of the



C. L. FERRALL

Pittsburgh, Cincinnati, Chicago and St. Louis Railway Company on October 6, 1881, as Clerk in the office of the General Freight Agent at Columbus, Ohio, and he continued in that office until March 12, 1901, when he was made Assistant Chief Clerk to the Coal Freight Agent at Pittsburgh.

Mr. Ferrall was made Chief Clerk in the office of the Division Freight Agent at Pittsburgh in 1903, and in 1907 was appointed Chief Clerk to the Chief of the Tariff Bureau. In 1908 he was made Chief Clerk to the General Freight Agent, Pittsburgh, Cincinnati, Chicago and St. Louis Railway Company at Pittsburgh, and on February 16, 1914, he was promoted to Division Freight Agent of the Pennsylvania Company, with headquarters at Cambridge, Ohio.

J. D. COUFFER

General Western Freight Agent, Pittsburgh, Cincinnati, Chicago and St. Louis Railway Company

John D. Couffer was born at Covington, Ohio, October 30, 1867. He entered the service of the Railroad in 1886 as Manifest Clerk on the Chicago Terminal Division.

Mr. Couffer was made Tariff Clerk in the office of the General Western and Division Freight Agent in Chicago in 1889, and in 1892 he became Green Line Bill of Lading Clerk. He was appointed Chief Clerk in 1897, and in 1901 was promoted to the position of Acting Green Line Agent. He was made Agent of the Green Line in 1903. On



J. D. COUFFER

February 16, 1914, he was promoted to be General Western Freight Agent of the Pittsburgh Cincinnati, Chicago and St. Louis Railway Company, with office in Chicago.

E. R. COLEMAN

Division Freight Agent, Cincinnati

E. R. Coleman was born in Jersey City, N. J., March 24, 1870. He entered the employ of the

He became Chief Clerk in the General Western Freight office in 1910, and on March 1, 1914, he was made Agent of the Green Line.

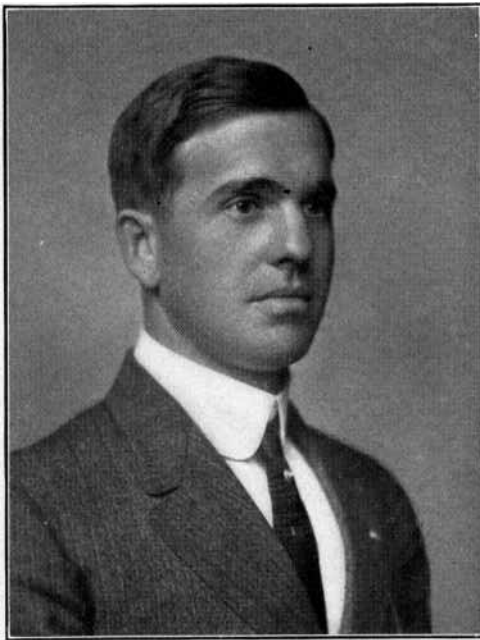
P. C. SPRAGUE

Division Freight Agent, Richmond

P. C. Sprague was born in Salem, Ohio, June 5, 1883. He was employed by the Railroad as Mes-



E. R. COLEMAN



P. C. SPRAGUE

Vandalia Railroad in 1886 as Clerk at South Bend, Ind.

Mr. Coleman served as Check Clerk, Expense Clerk, and Bill Clerk, Soliciting Agent, Commercial Agent, and Division Freight Agent on the Vandalia Railroad. He was made Division Freight Agent on the Pittsburgh, Cincinnati, Chicago and St. Louis Railway Company, April 1, 1908, with headquarters at Richmond, Ind. On February 16, 1914, he was made Division Freight Agent at Cincinnati.

E. A. McNULTY

Agent, Green Line, Chicago

E. A. McNulty was born in Chicago, Ill., June 28, 1880. He was employed as Messenger in the office of the General Western and Division Freight Agent of the Pittsburgh, Cincinnati, Chicago and St. Louis Railway Company in Chicago in 1895. He was promoted to be Assistant Chief Clerk in that office in September, 1907, and in April, 1908, was made Freight Solicitor.

senger in the Telegraph Office at Pittsburgh on July 1, 1898.

In 1903 Mr. Sprague was made Rate Clerk in the office of the General Freight Agent, Pennsylvania Company, Pittsburgh, and Tariff Clerk in 1905; he was appointed Assistant Chief Clerk in May, 1907, and Special Agent in 1911.

He was appointed Division Freight Agent, Pennsylvania Company, at Cambridge, Ohio, in 1912, and on February 16 1914, was made Division Freight Agent of the Pittsburgh, Cincinnati, Chicago and St. Louis Railway Company at Richmond.