

# THE PENNSYLVANIA RAILROAD SYSTEM

Broad Street Station  
PHILADELPHIA, PA.

September 4, 1913

Pennsylvania Station  
PITTSBURGH, PA.

14

## The Railroad Roll of Honor

“I have considered the pension list of the Republic as a roll of honor,”—  
*President Grover Cleveland in a special  
message to Congress, July 5, 1888.*

The following employes of the Companies in the Pennsylvania Railroad System retired as of August 1, 1913, under the pension rules. This list represents the usual monthly addition to a roll which now totals 3972 pensioners:

### LINES EAST OF PITTSBURGH

Name	Occupation	Division	Length of Service	
			Years	Months
JNO. M. DAUGHERTY	FOREMAN BOILERMAKER	ALLEGHENY	55	4
JOS. G. TROUT	ENGINE PREPARER	ALTOONA MACHINE SHOPS	52	5
ELIAS TOY	CONDUCTOR	NEW YORK	50	7
JOHN QUINN	CAR BUILDER	MARYLAND	50	
JAMES D. WILDS	CLERK FREIGHT CLAIM AGENT'S OFFICE	GENERAL OFFICE	48	9
JNO. McCONNELL	LAMP CLEANER	PHILADELPHIA TERMINAL	47	11
JNO. J. BULLIS	GENERAL FOREMAN SHIP CARPENTERS	NEW JERSEY	47	8
DANIEL MARTIN	FOREMAN	W. J. & S. R. R.	47	7
EDW. BRACKIN	FOREMAN	PHILADELPHIA TERMINAL	47	4
JNO. SULLIVAN	MACHINE HAND	RENOVO	47	3
WM. S. PRINGLE	CONDUCTOR	PITTSBURGH	46	9
WM. H. BRIEN	CHECKMAN	NEW YORK	46	7
HUGH B. KELLEY	ENGINEMAN	PHILADELPHIA	46	1
THOS. J. ATTIG	ENGINEMAN	SUNBURY	45	9
FRANCIS M. STEELE	ENGINEMAN	PHILADELPHIA	45	4
ARCHIE SNAVELY	FREIGHT CONDUCTOR	PHILADELPHIA	44	3
CHAS. F. UNKLE	PAINTER	RENOVO	43	4
WM. H. BURGET	CABINETMAKER	ALTOONA CAR SHOPS	42	8
PATRICK CARMODY	SWITCHMAN	NEW YORK	42	2
FRANK GUNNING	WATCHMAN	CONEMAUGH	42	1
JOHN HAIGHT	AGENT	BUFFALO	40	
D. H. WINEBRENNER	OIL DISTRIBUTER	PITTSBURGH	38	5
W. N. ROBERTS	FOREMAN	TRENTON SHOPS	36	6
EDGAR R. SIPPLE	ASSISTANT TRAIN MASTER AND AGENT	DELAWARE	35	10
WINFIELD S. BELL	PUMPMAN	MIDDLE	35	9
THOS. LINGENFELTER	GAS MAKER HELPER	ALTOONA MACHINE SHOPS	32	7
D. C. BLANK	ENGINEMAN	WILLIAMSPORT	32	3
J. C. BROWNAWELL	ELEVATOR MAN	PHILADELPHIA TERMINAL	30	9
ED. MILLIKEN	CAR REPAIRMAN	CONEMAUGH	30	9
JOHN BRADY	LABORER	ALTOONA MACHINE SHOPS	29	1
MYRON HORNBECK	CAR INSPECTOR	ALLEGHENY	25	10
ED. EARLEY	MESSENGER	PHILADELPHIA TERMINAL	20	6

## LINES WEST OF PITTSBURGH

Name	Occupation	Division	Length of Service	
			Years	Months
H. J. AMERLING . . . . .	TINNER . . . . .	ERIE AND ASHTABULA . . . . .	50	11
S. C. GILLESPIE . . . . .	PASSENGER CONDUCTOR . . . . .	ERIE AND ASHTABULA . . . . .	46	1
F. C. GOLDENBERG . . . . .	CLERK . . . . .	PITTSBURGH . . . . .	44	6
C. B. FENLON . . . . .	CLERK . . . . .	CHICAGO TERMINAL, PENNSYLVANIA COMPANY . . . . .	44	1
J. A. MILLER . . . . .	CROSSING WATCHMAN . . . . .	WESTERN . . . . .	32	3

### Men Now Retiring Who Have Served the Pennsylvania Railroad More Than Half a Century



**JOHN M. DAUGHERTY**  
LENGTH OF SERVICE, 55 YEARS 4 MONTHS

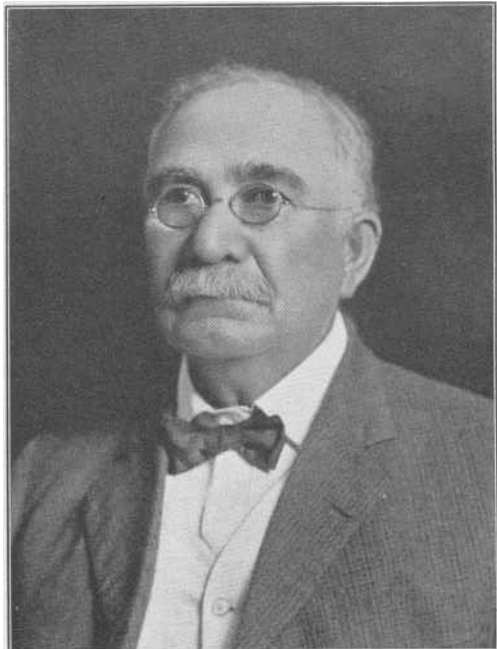
John M. Daugherty was born at Sinking Valley, Blair County, Pa., July 7, 1843. He entered the service of the Company as a boilermaker in the Altoona Machine Shops on January 12, 1857. During the succeeding nine years he was a shop hand and bridge builder. From November 6, 1866, to January 19, 1871, when he resigned, he was a boilermaker in the Company's shops at Renovo, Pa.

Mr. Daugherty returned to the service of the Railroad Company on September 17, 1871, as Foreman Boilermaker on the Buf-

falo and Allegheny Division, now the Northern Division, in which capacity he served the Company forty-two years.

**JOSEPH G. TROUT**  
LENGTH OF SERVICE, 52 YEARS 5 MONTHS

Joseph G. Trout was born at Henehewtown, Pa., March 13, 1847. He entered the service of the Company on March 1, 1861, as a laborer in the Altoona Machine Shops. On October 16, 1865, he became an engine repairer, and on January 1, 1870, a machinist. In the following December he was



**JOSEPH G. TROUT**

made Engine Repairer, which position he occupied until August 1, 1902, when he was transferred to Head Hostler. On November 15, 1906, he returned to the position of Engine Repairer.

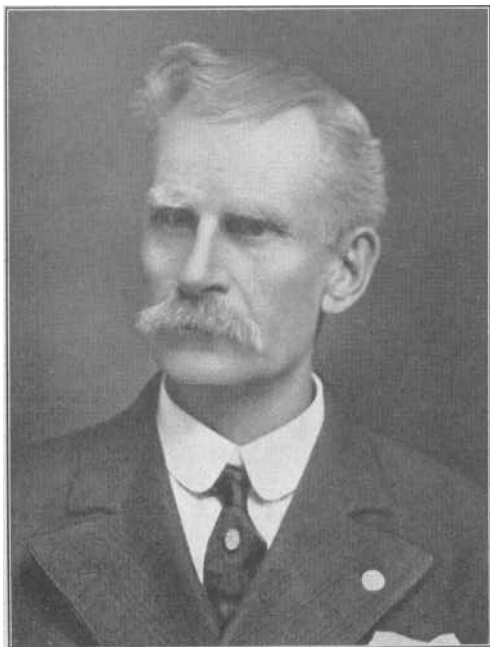
---

**H. J. AMERLING**

LENGTH OF SERVICE, 50 YEARS 11 MONTHS

H. J. Amerling was born at Baltimore, Md., May 25, 1847. He entered the service of the Pennsylvania Railroad in 1862 in the Lock Haven, Pa., Shops, where he served his apprenticeship as a tinsmith. When the Lock Haven Shop was moved to Sunbury, Pa., he was transferred to that point, where he remained until the latter part of 1868, when he was granted a leave of absence.

On September 11, 1871, Mr. Amerling was transferred from the Pennsylvania Railroad Lines East of Pittsburgh to the Lines West, as a tinner, and was assigned to the



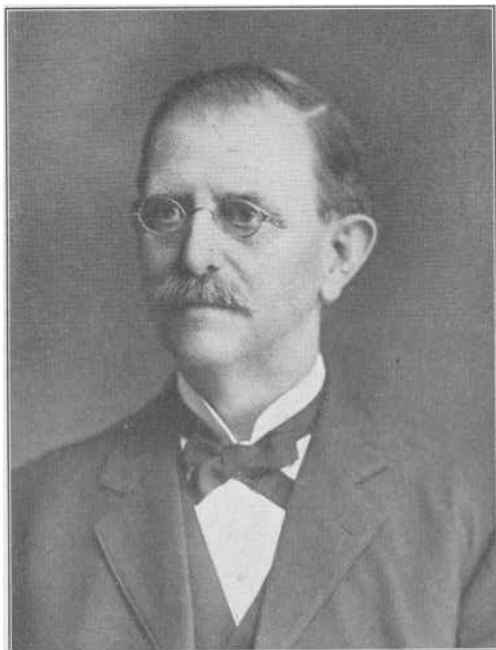
**H. J. AMERLING**

Erie, Pa., Shops, where he was in continuous service for forty-two years.

---

**ELIAS TOY**

LENGTH OF SERVICE, 50 YEARS 7 MONTHS

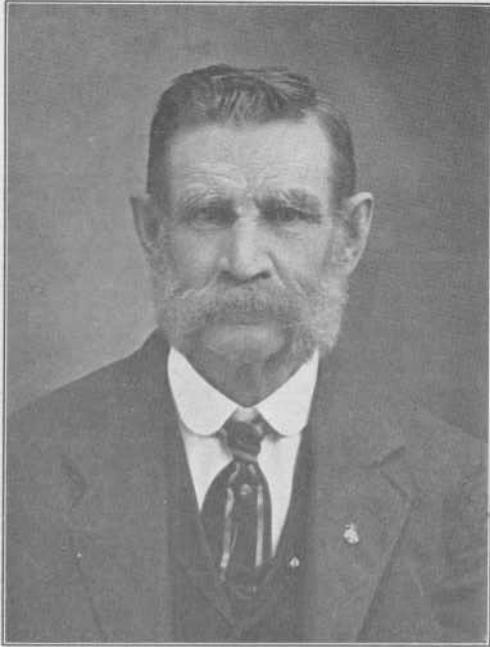


**ELIAS TOY**

Elias Toy was born in Philadelphia, Pa., July 15, 1843. He entered the service of the Railroad Company December 22, 1862, as a brakeman on the New York Division. After six years he was promoted to Conductor.

Mr. Toy was a conductor on the New York Division for forty-five years, having served the Company for fifty years and seven months.

Mr. Toy is a resident of Bustleton, Pa., where he has lived for a number of years. As a manifestation of their esteem for him, some 400 of his friends and town-folk held a public reception in his honor on the occasion of his retirement, and presented him with a silver service.



JOHN QUINN

JOHN QUINN

LENGTH OF SERVICE, 50 YEARS

John Quinn was born in Hartford County, Md., July 24, 1843. His first service with the Company was as a track laborer on the Maryland Division from April 1, 1860, to May, 1861, when he resigned. In March, 1863, he re-entered the service as a track foreman, which position he held until March, 1872, when he resigned. For a period of eight years, from January, 1873, he was a trackman on the Maryland Division. On June 1, 1882, he became a car builder in the Motive Power Department. In this position he served the Company thirty-one years.

## The Pennsylvania's Pension Department

Amount paid since Department was established on January 1, 1900 . . . . .	Lines East of Pittsburgh	Lines West of Pittsburgh	Pennsylvania Railroad System
	\$6,801,378.67	\$2,208,381.83	\$9,009,760.50
Total number of employes pensioned to August 1, 1913 . . . . .	5720	1837	7557
Pensioned employes who have died . . . . .	2730	855	3585
Total number of employes on Pension roll August 1, 1913 . . . . .	2990	982	3972

“The men who would have been naval heroes in the days of Elizabeth, and explorers in the days of La Salle, and painters in the days of Michael Angelo, are railroad men today.”

—Arthur Brisbane, before the Traffic Club of Pittsburgh, January 13, 1913.