

ITEM	DESCRIPTION	SD30a	SD30b	SD30c
1	INSULATOR	3-B	3-A	3-A1
2	PIN	NP-1	NP-1	NP-1
3	CLEVIS END SOCKET	MF4C	MF4C	MF1
4	EYE END SOCKET	MF4E	MF4E	MF3
5	SHACKLE	S4	S4	S30
6	BRZ STRAND	7/16	7/16	5/8

ITEM	DESCRIPTION	Y _a	Y _c
9	BRZ STRAND	7/16	5/8
11	EYE END SOCKET	MF4E	MF3
12	EYE END SOCKET	MF4C	MF1

ITEM	DESCRIPTION	SE40a	SE40b	SE40c	SE40bs
1	INSULATOR	3-B1	3-A1	3-A2	3-A1
2	PIN	NP-1	NP-1	NP-5	NP-1
6	ADAPTER	---	---	---	ND-1
8	PIN	---	---	---	NP-5

ITEM	DESCRIPTION	Z _a	Z _c
9	BRZ STRAND	7/16	5/8
10	CLEVIS END SOCKET	2 MF4C	2 MF1

ITEM	DESCRIPTION	SD31a	SD31b	SD31c
1	INSULATOR	3-B1	3-A1	3-A2
2	PIN	NP-1	NP-1	NP-5
6	ADAPTER	ND-1	ND-1	ND-2
7	TURNBUCKLE	TB18A	TB18A	TB18A
8	PIN	NP-3	NP-3	NP-3

ITEM	DESCRIPTION	Y _a	Y _c
9	BRZ STRAND	7/16	5/8
11	EYE END SHACKLE	S10	S8
12	EYE END SHACKLE	S9	S7A
13	WIPE CLIPS	4-7C	4-8B

ITEM	DESCRIPTION	Z _a	Z _c
9	BRZ STRAND	7/16	5/8
11	EYE END SHACKLE	2-S10	2-S8
13	WIPE CLIPS	4-7C	4-8B

NOTE: CLIPPED STRANDS MAY BE SUBSTITUTED FOR SOCKETED STRANDS AS FOLLOWS:

Y_a - SUBST. Y_a OMIT PULL-OFF TAIL & ADD 2 7/16" WIPE CLIPS

Y_c - SUBST. Y_c OMIT PULL-OFF TAIL & ADD 2 5/8" WIPE CLIPS

Z_a - SUBST. Z_a OMIT PULL-OFF TAIL & ADD 2 7/16" WIPE CLIPS

Z_c - SUBST. Z_c OMIT PULL-OFF TAIL & ADD 2 5/8" WIPE CLIPS

SD32a OMIT MF4C & MF4E & SUBST. Y_a WITHOUT PULL-OFF TAIL & ADD 2 7/16" WIPE CLIPS

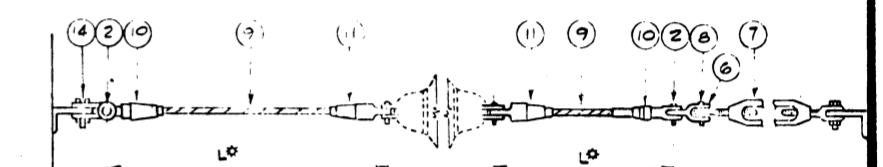
SD32c OMIT MF1 & MF3 & SUBST. Y_c WITHOUT PULL-OFF TAIL & ADD 2 5/8" WIPE CLIPS

SD33a OMIT MF4C & MF4E & SUBST. Y_a WITHOUT PULL-OFF TAIL & ADD 2 7/16" WIPE CLIPS

SD33c OMIT MF1 & MF3 & SUBST. Y_c WITHOUT PULL-OFF TAIL & ADD 2 5/8" WIPE CLIPS

SEE NOTE-1

SEE NOTE-1

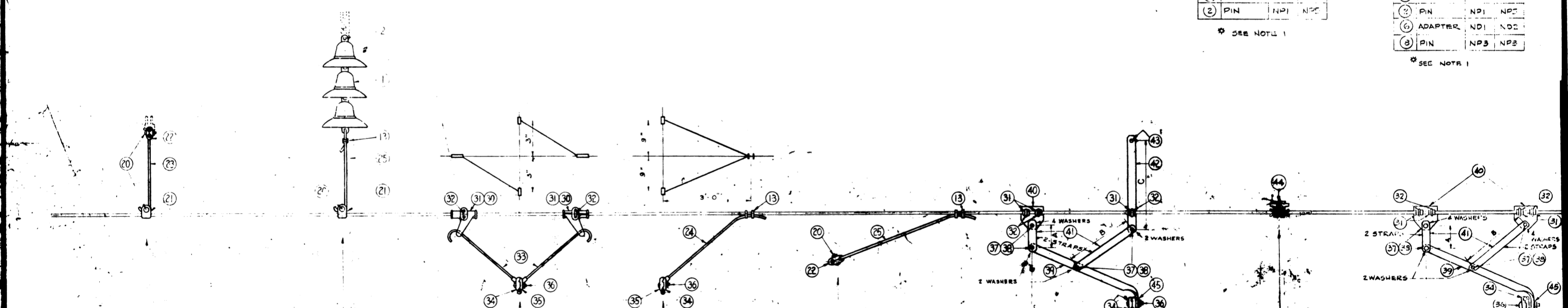


ITEM	DESCRIPTION	SD32a	SD32c
9	BRZ STRAND	7/16	5/8
10	CLEVIS END SOCKET	MF4C	MF1
11	EYE END SOCKET	MF4E	MF3
14	SHACKLE	S4	S30
2	PIN	NP-1	NP-5

ITEM	DESCRIPTION	SD33a	SD33c
9	BRZ STRAND	7/16	5/8
10	CLEVIS END SOCKET	MF4C	MF1
11	EYE END SOCKET	MF4E	MF3
7	TURNBUCKLE	TB18A	TB18A
2	PIN	NP-1	NP-5
6	ADAPTER	ND-1	ND-2
8	PIN	NP-3	NP-3

SEE NOTE-1

SEE NOTE-1



ITEM	DESCRIPTION	USE WITH 7/16" MESS.	USE WITH 5/8" MESS.
20	BOLT	2-BB22	2-BB22
21	CLIP	2-BC25	2-BC25
22	CLIP	2-BC37	2-BC37
23	ROD	2-3/8"	2-3/8"

ITEM	DESCRIPTION	SH62a	SH62c
1	INSULATOR	3-B1	3-B1
2	PIN	NP-1	NP-1
20	BOLT	2-BB22	2-BB22
21	STRAND WIRE CLAMP	2-BC25	2-BC25
23	42" ROD	---	---
13	WIPE CLIP	1-7C	1-7C

ITEM	DESCRIPTION	SA50a	SA51c
30	CLAMP	2-HSC	---
31	SADDLE	---	---
32	U-BOLT	2-UB27	---
33	STEADY ROD	2-SR	---
34	CLIP	2-BC34	---
35	FACING CLIP	2-BC37	---
36	BOLT	2-BB24	---

ITEM	DESCRIPTION	SA51a	SA51c
24	ROD	2-1/2"	2-1/2"
34	CLIP	2-BC34	2-BC34
35	FACING CLIP	2-BC37	2-BC37
36	BOLT	2-BB24	2-BB24
13	WIPE CLIP	2-7/8"	2-7/8"

ITEM	DESCRIPTION	SA52a	SA52c	SA53a	SA53c
20	BOLT	B22	B22	B22	B22
22	CLIP	2-BC25	2-BC25	2-BC24C	2-BC24C
25	ROD	42"	42"	42"	42"
13	WIPE CLIP	2-7/8"	2-7/8"	2-7/8"	2-7/8"

ITEM	DESCRIPTION	SA54a	SA54c
37	SADDLE	3-S22	---
38	U-BOLT	3-UB27	---
39	CLIP	2-TS38	---
40	BOLT	BB33	---
41	SHOULDER B.T.	2-S45	---
42	WASHER	2-W38	---
43	TWISTED STRAP	1-TS110	---
44	PLATE	1-131	---
45	STRAP 0	1-113	---
46	STRAP 0	1-113	---
47	BOLT	BB4	---
48	WASHER	---	---

ITEM	DESCRIPTION	SA55a	SA55c
44	WIPE CLAMP	1-WC110	---

ITEM	DESCRIPTION	SA56a	SA56c
51	SADDLE	4-S11	---
52	U-BOLT	4-UB27	---
53	CLIP	2-BC29A	---
54	BOLT	BB33	---
55	SHOULDER B.T.	1-S45	---
56	WASHER	1-W38	---
57	TWISTED STRAP	1-TS110	---
47	PLATE	2-113P	---
41	STRAP 0	4-113	---
45	WASHER	1-W38	---
46	WASHER	1-W38	---

NOTE: THIS DRWG SUPERSEDES DRWGS ET-208-E ET-209-E ET-898-E ET-996-E ET-925-E ET-899-E ET-1003-E ET-1292 148-107

REFERENCE DRAWINGS

INS. A1 ---	1131P0 ---	ET-1131-E	BB33 ---	ET-148-E	MF1 ---	ET-662-E
INS. A2 ---	BG-1 ---	ET-145-E	S8 ---	ET-14-E-35	S9 ---	ET-14-E-87
INS. B1 ---	B-8B34	ET-148-E	S10 ---	ET-14-E-88	S7A ---	ET-14-E-86
NP-1 ---	11-B-1206	UB-27 ---	ET-146-E	SR ---	ET-1095-E	S4 ---
NP-5 ---	11-B-1206	SBS ---	ET-1090-E	ND-1 ---	ET-449-E	CABLE CLAMP 7/16" ---
NP-3 ---	11-B-1206	BB-22 ---	ET-148-E	ND-2 ---	ET-449-E	CABLE CLAMP 5/8" ---
1024-A ---	ET-1024-E	BC-34 ---	ET-1089-E	TB18A ---	ET-308-D	HSC ---
1023-A ---	ET-1023-E	BC-37 ---	ET-1083-E	MF4E ---	ET-944-E	SWS ---
1131-A8 ---	ET-1131-E	BC-25 ---	ET-1088-E	MF3 ---	ET-662-E	1131-P ---
1131-CD ---	ET-1131-E	BC-24B	ET-1087-E	MF3C ---	ET-944-E	T538 ---
1023-B ---	ET-1023-E	BC-24C	ET-1086-E	HC29A ---	ET-1029-E	

NOTE-1
FOR STRAND LENGTH SEE ERECTION DIAGRAM.

NOTE-2
FOR 5/8" STRAND-USE MWS FOR 7/16" STRAND-USE SWS

GENERAL NOTES:
ASSEMBLIES WITHOUT LOWER CASE SUBSCRIPT TITLE MAY BE USED ON ANY SIZE STEADY STRAND, OTHERWISE:
'a' INDICATES USE ON 7/16" STRAND AND 'c' INDICATES USE ON 5/8" STRAND.
IN LIKE MANNER FOR INSULATOR ASSEMBLIES:
'a' INDICATES USE OF B1 INSULATOR
'b' INDICATES USE OF A1 INSULATOR
'c' INDICATES USE OF A2 INSULATOR.

FOR LENGTH-SEE ERECTION DIAGRAM

REV	DATE	BY	CHKD	DESCRIPTION
1	10-14-68
2

REVISIONS TO BE MADE BY THE USER FOR THIS DRAWING TO BE USED AS A BASIS FOR CONSTRUCTION. REVISIONS SHOULD BE MADE TO THE DRAWING BY THE USER AND NOT TO THE ORIGINAL DRAWING.

DATE DIM. CHECKED: _____

DATE DIM. CONCURRED: _____

DATE DIM. APPROVED: _____

PENN CENTRAL TRANSPORTATION CO.