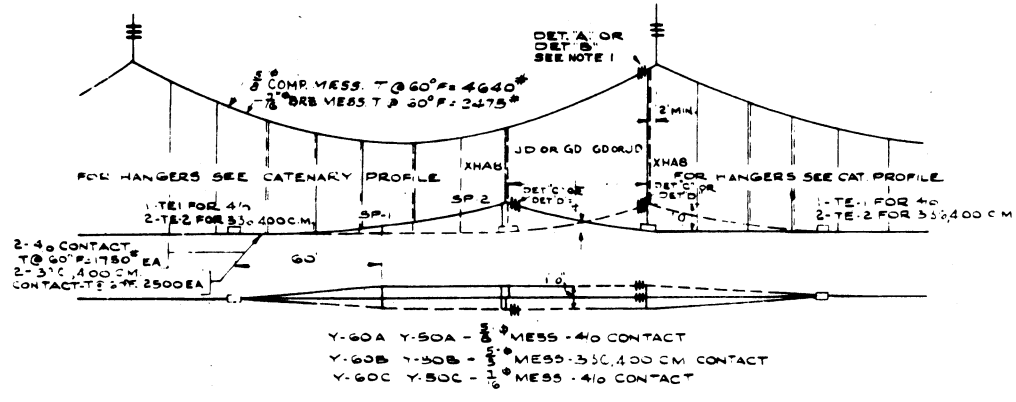
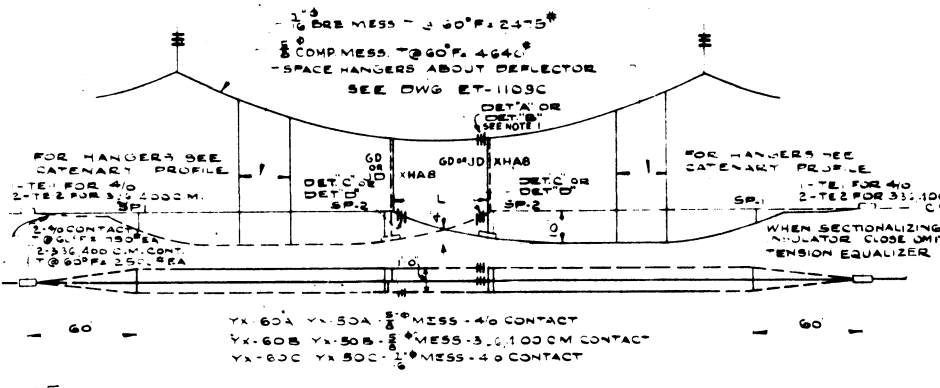


FOR INSTALLATION OF FEEDERS
SEE ET-1105-C



MAIN TRACK AIR BREAK
30' & 60'

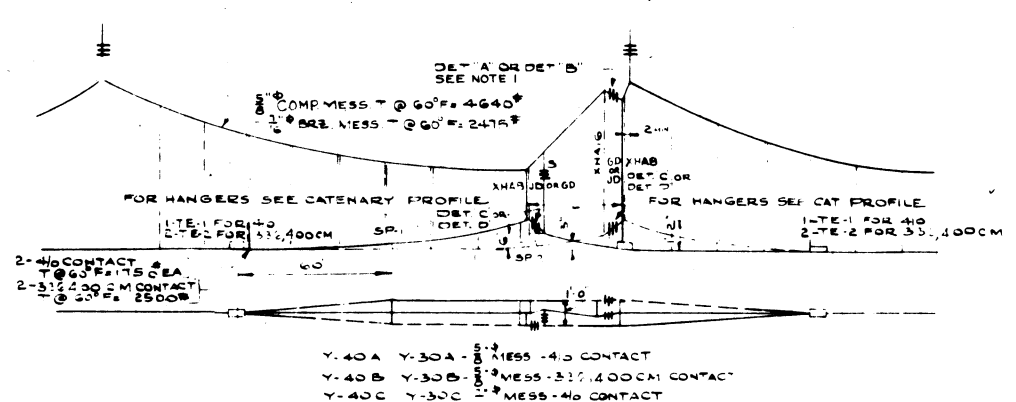
BILL OF MATERIAL											
TYPE	L	DET. A	DET. B	DET. C	DET. D	HANGER XHAB	HANGER XHAB	SPREADER SP.1	SPREADER SP.2	TENS EQ. TE-1	TENS EQ. TE-2
Y-60A	60-0				2	2				2	
Y-60B	60-0			2		2					4
Y-60C	60-0				2	2				2	
Y-50A	50-0				2	2				2	
Y-50B	50-0			2		2					4
Y-50C	50-0				2	2				2	



X-OVER AIR BREAK
30' & 60'

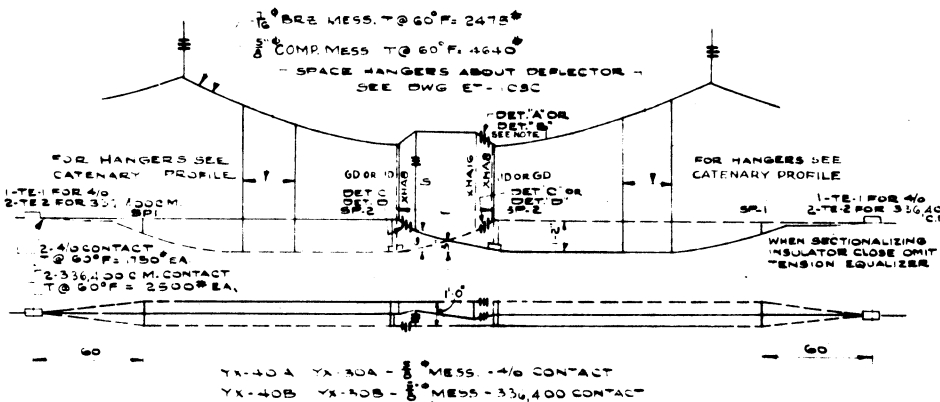
BILL OF MATERIAL											
TYPE	L	DET. A	DET. B	DET. C	DET. D	HANGER XHAB	HANGER XHAB	SPREADER SP.1	SPREADER SP.2	TENS EQ. TE-1	TENS EQ. TE-2
YX-60A	60-0				2	2				2	
YX-60B	60-0			2		2					4
YX-60C	60-0				2	2				2	
YX-50A	50-0				2	2				2	
YX-50B	50-0			2		2					4
YX-50C	50-0				2	2				2	

FOR INSTALLATION OF FEEDERS
SEE ET-1105-C



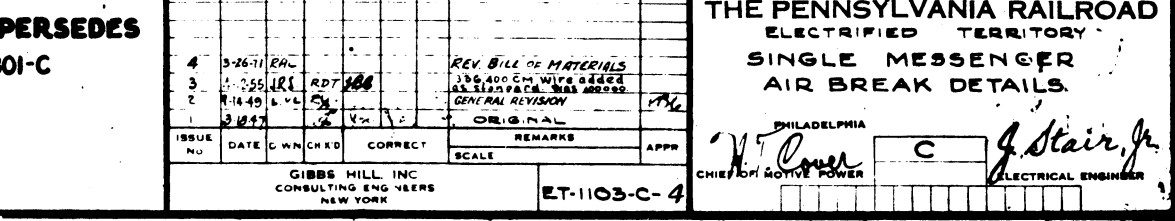
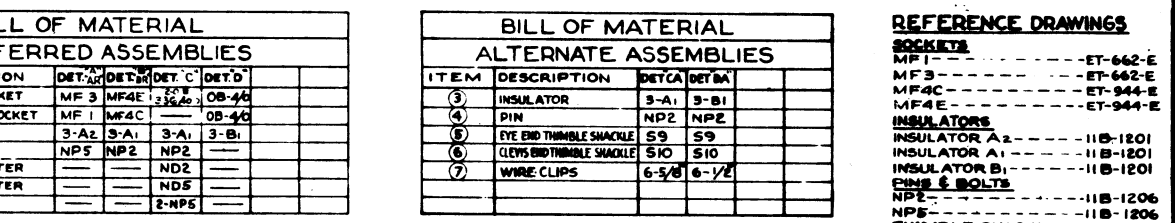
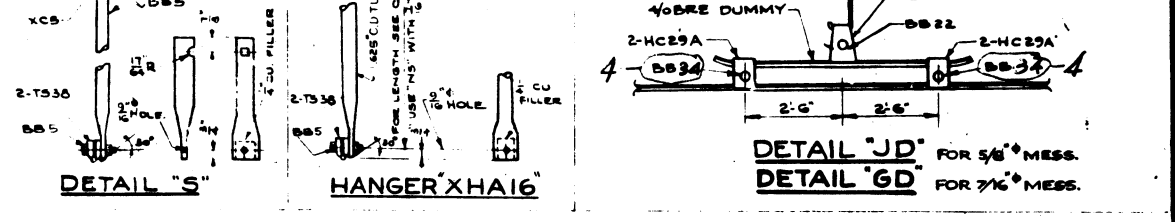
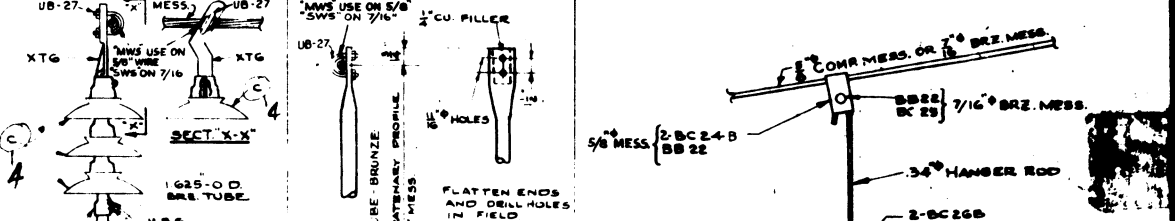
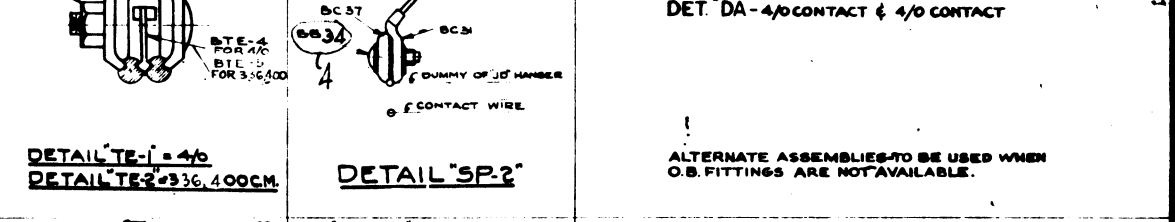
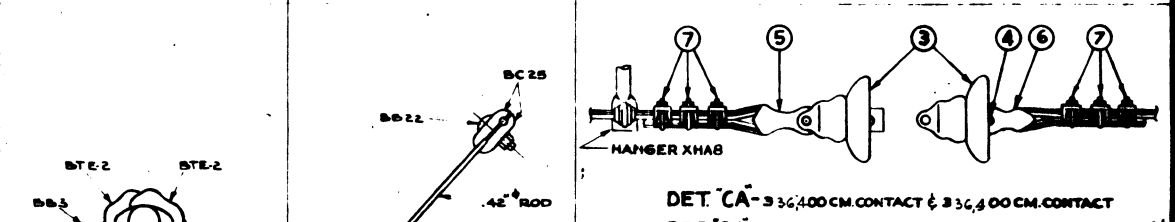
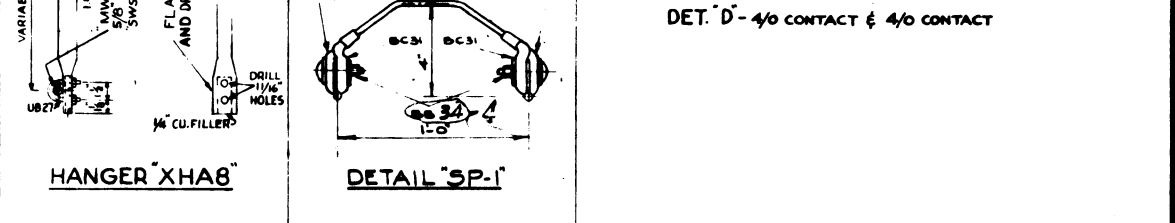
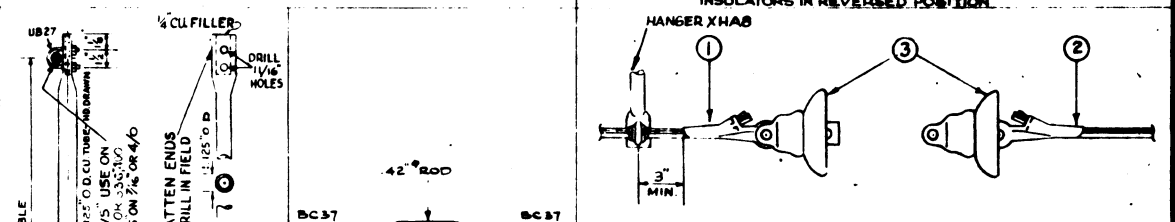
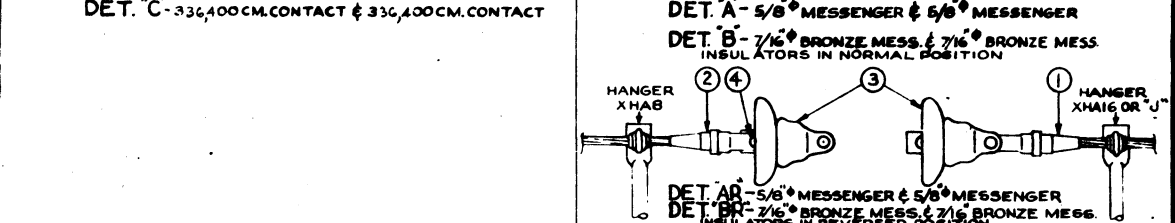
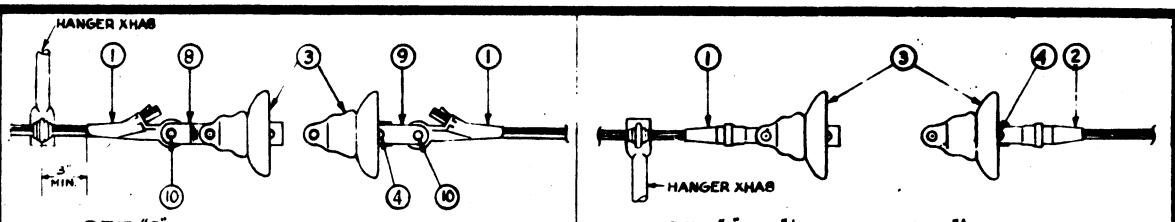
MAIN TRACK AIR BREAK
30' & 40'

BILL OF MATERIAL											
TYPE	L	DET. A	DET. B	DET. C	DET. D	HANGER XHAB	HANGER XHAB	SPREADER SP.1	SPREADER SP.2	TENS EQ. TE-1	TENS EQ. TE-2
Y-40A	40-0				2	2				2	
Y-40B	40-0			2		2					4
Y-40C	40-0				2	2				2	
Y-30A	30-0				2	2				2	
Y-30B	30-0			2		2					4
Y-30C	30-0				2	2				2	



X-OVER AIR BREAK
30' & 40'

BILL OF MATERIAL											
TYPE	L	DET. A	DET. B	DET. C	DET. D	HANGER XHAB	HANGER XHAB	SPREADER SP.1	SPREADER SP.2	TENS EQ. TE-1	TENS EQ. TE-2
YX-40A	40-0				2	2				2	
YX-40B	40-0			2		2					4
YX-40C	40-0				2	2				2	
YX-30A	30-0				2	2				2	
YX-30B	30-0			2		2					4
YX-30C	30-0				2	2				2	



REFERENCE DRAWINGS	
ROCKERS	
MP1	ET-662-E
MP3	ET-662-E
MP4C	ET-944-E
MP4E	ET-944-E
INSULATORS	
INSULATOR A1	11B-1201
INSULATOR A2	11B-1201
INSULATOR B1	11B-1201
INSULATOR B2	11B-1201
INSULATORS	
NPS	11B-1206
NP2	11B-1206
THIMBLE SHACKLES	
S9	14E-87
S10	14E-87
O.B. CLAMP-EYE END	
WIRE SIZE CAT. NO. O.B. DWS. NO.	
336,400	24037
4/0	20723
21702	
O.B. CLAMP-CLEVIS END	
WIRE SIZE CAT. NO. O.B. DWS. NO.	
336,400	25153
4/0	20720
14000	
MISCELLANEOUS	
ND2	ET-449-E
ND5	ET-394-E
1/2\"/>	
5/8\"/>	

NOTE 3-
O.B. REFERS TO OHIO BRASS CO.

NOTE 1- WHENEVER INSULATORS SLOPE UPWARD FROM XHAB HANGER OR NOTE "REVERSE INSULATORS" APPEARS ON CATENARY PROFILE, SUBSTITUTE ASSEMB. "AR" FOR "A" AND "BR" FOR "B".
NOTE 2- USE SADDLE UNDER ALL U-BOLTS "MWS" ON 5/8" OR 3/4" WIRE, "SWS" ON 7/16" OR 4/0 WIRE.

THIS DRAWING SUPERSEDES
DRAWING ET-801-C

REV.	DATE	BY	CHKD	CORRECT	SCALE	REMARKS	APPR
4	3-26-71	EAR					
3	1-25-68	JRL	ADT				
2	11-19-58	WV	WV				
1	3-27-57	WV	WV				

THE PENNSYLVANIA RAILROAD
ELECTRIFIED TERRITORY
SINGLE MESSENGER
AIR BREAK DETAILS

PHILADELPHIA
CHIEF OF POWER
C
J. Stair, Jr.
ELECTRICAL ENGINEER